

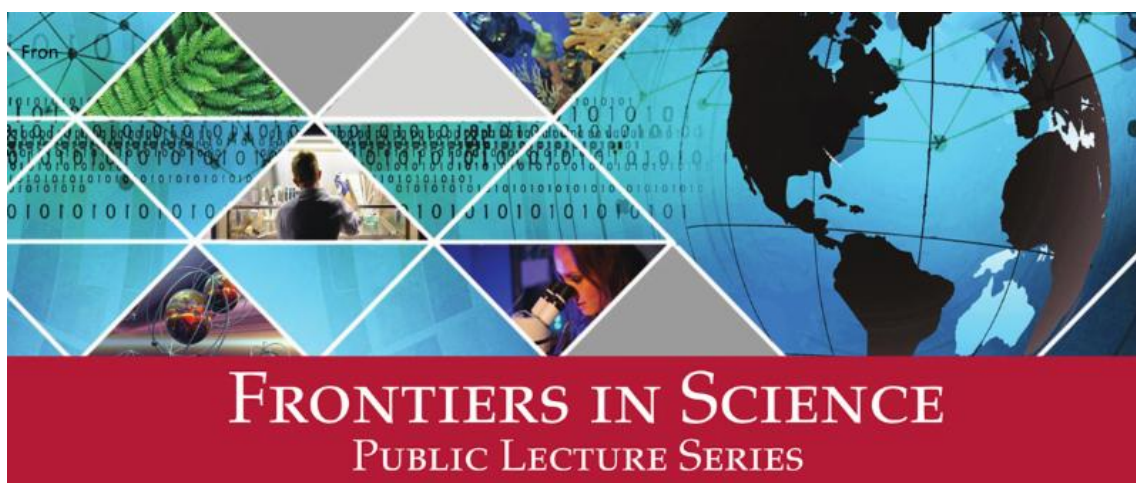


## FAU Inducted as Chapter of Association for Women in Science



*FAU Association for Women in Science leadership, pictured from left to right: Emmanuelle Tognoli, Ph.D., Daniela Nikolova, Ph.D., Julie Servoss, M.D., and Lianfen Qian, Ph.D.*

FAU was recently accepted as an official chapter of the Association for Women in Science (AWIS), a global network inspiring bold leadership, research and solutions that advance women in STEM (science, technology, engineering and mathematics). [Read more](#). Visit the [FAU AWIS website](#).



You're invited to the [FAU Frontiers in Science](#) April lectures. Explore the sciences with researchers and innovators from across the globe, and right here in our own community. The lectures are free and open to the public.



**Friday, April 5**

"Our Place in the Universe"  
*Jason Kalirai, Ph.D.*

3:30 p.m. in [College of Medicine \(BC-71\), room 126](#)

*Videoconference available on the FAU Jupiter campus, SR 275, classroom 29*

*Refreshments will be served following the talk.*



**Friday, April 19**

"Exploring the Connection Between Galaxies and Supermassive Black Holes"  
*Vicki Sarajedini, Ph.D.*

[South Florida Science Center](#) and the Schmidt College of Science present a joint lecture

**[REGISTER HERE](#)**

6:00 p.m. at [4801 Dreher Trail N, West Palm Beach, FL 33405](#)

*(Open exploration of the science center following the talk)*

---

## FAU Scientist Necibe Tuncer: Mathematical Biologist



Necibe Tuncer, Ph.D., is an Associate Professor in the Department of Mathematical Sciences at FAU. Necibe studies how diseases spread, and uses modeling to better understand outbreaks, such as Zika. [Watch here.](#)

---

## Ask a Scientist

# ASK A SCIENTIST

WITH DR. JEANETTE  
WYNEKKEN  
*HOSTED BY SCIENCE  
DEAN, DR. ATA SARAJEDINI*



Science Dean and Professor, Ata Sarajedini, Ph.D., meets with Jeanette Wyneken, Ph.D., a Professor of Biological Sciences at FAU. Jeanette speaks about how the environment can impact the sex determination of sea turtles, the effects of climate change on incubation temperatures in nests, and the research being performed in the FAU Marine Lab at the Gumbo Limbo Nature Center. [Listen here.](#)

---





## Meet Science Career Liaison: Ella Tepper Feliciano

We welcome Ella Tepper Feliciano, Assistant Director and Career Liaison to the College of Science, from the FAU Career Center. Reach out to Ella if you are interested in the Science Internship Course, you have questions about science careers, building your resume, mock interviews, graduate school, job searches, career skill development, and more. In addition, Ella will be presenting on career related topics to various classes. Ella will also be working towards expanding internship offerings across the college – developing relationships with employers interested in hiring science majors and hosting job shadowing opportunities. [Read more.](#)

[Click here](#) to schedule an appointment with Ella through Handshake.

---

## 50th Southeastern International Conference on Combinatorics, Graph Theory, and Computing



The Department of Mathematical Sciences held its 50th Southeastern International Conference on Combinatorics, Graph Theory, and Computing March 4-8 on the Boca Raton campus. The event was hosted by Fred Hoffman, Ph.D., who has been with the University for 51 years, and has hosted the conference for over 40 years. [Read more.](#)

---

## FAU's Human Mission to Mars



This first-of-its-kind course at FAU is open to all undergraduate students willing to serve as crew members for the University's inaugural expedition to Mars. Only 50 seats are available. Plan your mission with faculty from across four colleges. Learn about propulsion when lifting off from Earth and landing on Mars, the psychological and physiological impacts of the 100 million mile journey, colonizing and surviving on the red planet and much more.

*No prior orbit experience is necessary.* Find out more at [fau.edu/mars](http://fau.edu/mars). The course reached enrollment capacity; interested students can sign up for the wait list through the [course registration portal](#).

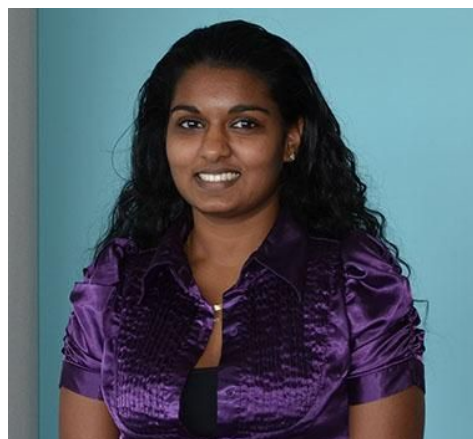
---

## Sea Slug Study Provides Insights Into Mitochondrial Movement

First year Integrative Biology Ph.D. student, Kerriann Badal, was published in the journal [Cell Reports](#) for her research on mitochondrial movements within cells. The research study is titled, "Synapse Formation Activates a Transcriptional Program for Persistent Enhancement in the Bi-directional Transport of Mitochondria."

Kerriann is first author alongside Sathya Puthanveetil, Ph.D., an associate professor at Scripps Research and senior author of the study.

[Read more.](#)

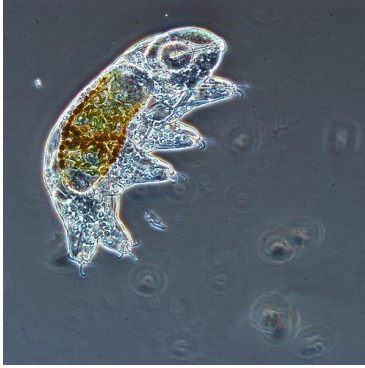


*Integrative Biology Ph.D. student, Kerriann Badal*

---

## In the News





### Microbiologist Gets Creative Using Instagram

Hunter Hines, a Ph.D. student at FAU's Harbor Branch, is engaging audiences in scientific exchanges around the world. Hines was lead author on an article published in [Nature](#), sharing the experience of using social media for microbiology outreach. [Read more.](#)



### Ph.D. Student Boris Tezak Wins Best Biology Talk

Ph.D. in Integrative Biology candidate, Boris Tezak, awarded Archie Carr Best Biology Talk at the International Sea Turtle Symposium. His talk was titled, "Identifying the Sex of Sea Turtle Hatchlings Via Blood Samples," and discusses the new technique of the sex of sea turtles through blood samples.



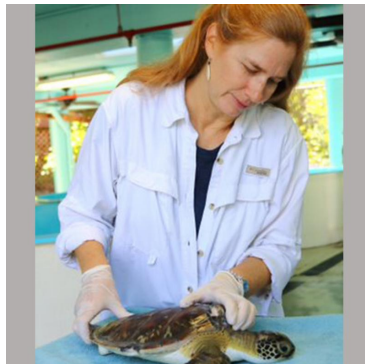
### Published in Journal PNAS USA

FAU alumnus and Research Assistant in the Maré Cudic Chemistry Lab, Forrest Fitzgerald, was published in the Proceedings of the National Academy of Sciences of the USA together with researchers from several reputable research groups. [Read more.](#)



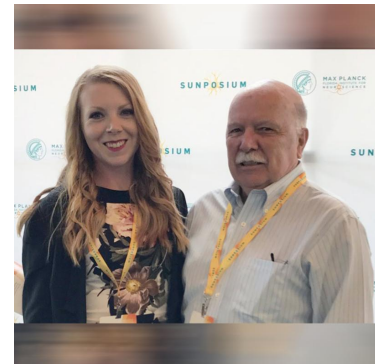
### Marianne Porter Interview: Journal Exp. Biology

The *Journal of Experimental Biology* features Marianne Porter, Ph.D., as part of the publication's Early Career Researchers series. Porter discusses her background, mentoring students, motherhood for academics, outreach, running a lab, and much more. [Read more.](#)



### Helping Baby Sea Turtles Thrive

Professor Sarah Milton's research explores the effects of environmental stress on Florida's favorite animal. Milton's lab is researching the effect of long walks on the health of one of nature's cutest and most vulnerable creatures. [Read more.](#)



### Bethany Stahl Speaks at Max Planck Sunposium

College of Science post-doctoral researcher Bethany Stahl, Ph.D., spoke about her research at the [Max Planck Florida Institute for Neuroscience Sunposium](#). The three day international neuroscience conference attracts hundreds of neuroscientists to south Florida. [Read more.](#)

## Sponsored Research Awards

**Greg Macleod:** National Institutes of Health, \$1,286,152

**Fred Hoffman:** Florida Atlantic University Foundation, \$15,600

**Fred Hoffman:** National Science Foundation, \$15,000

## Upcoming Events

**Friday, April 5**  
[Frontiers in Science Public Lecture, Jason Kalirai, Ph.D.](#)

**Friday, April 5**  
[GPSA Graduate Research Day](#)

**Saturday, April 6**  
[FAU Gala: \*Celebrating the College of Science\*](#)

**Saturday, April 6**  
[Math Inquiry Based Learning Workshop](#)

**Monday, April 8**  
[OURI Undergraduate Research Symposium](#)

**Monday, April 8**  
[Environmental Science Retreat](#)

**Monday, April 15**  
[Florida Israel Institute Seminar, Daniel Raviv, Ph.D.](#)

**Thursday, April 18**  
[Research in Action: Stacey Balkan, Ph.D.](#)

**Friday, April 19**  
[Frontiers in Science Public Lecture, Vicki Sarajedini, Ph.D.](#)

---

Submit your news for Science Connect to [scicomm@fau.edu](mailto:scicomm@fau.edu).

**[SCIENCE.FAU.EDU](https://science.fau.edu)**

STAY CONNECTED

