



FIRST-YEAR SOAR

STUDENT ORIENTATION, ACADEMICS AND RESOURCES

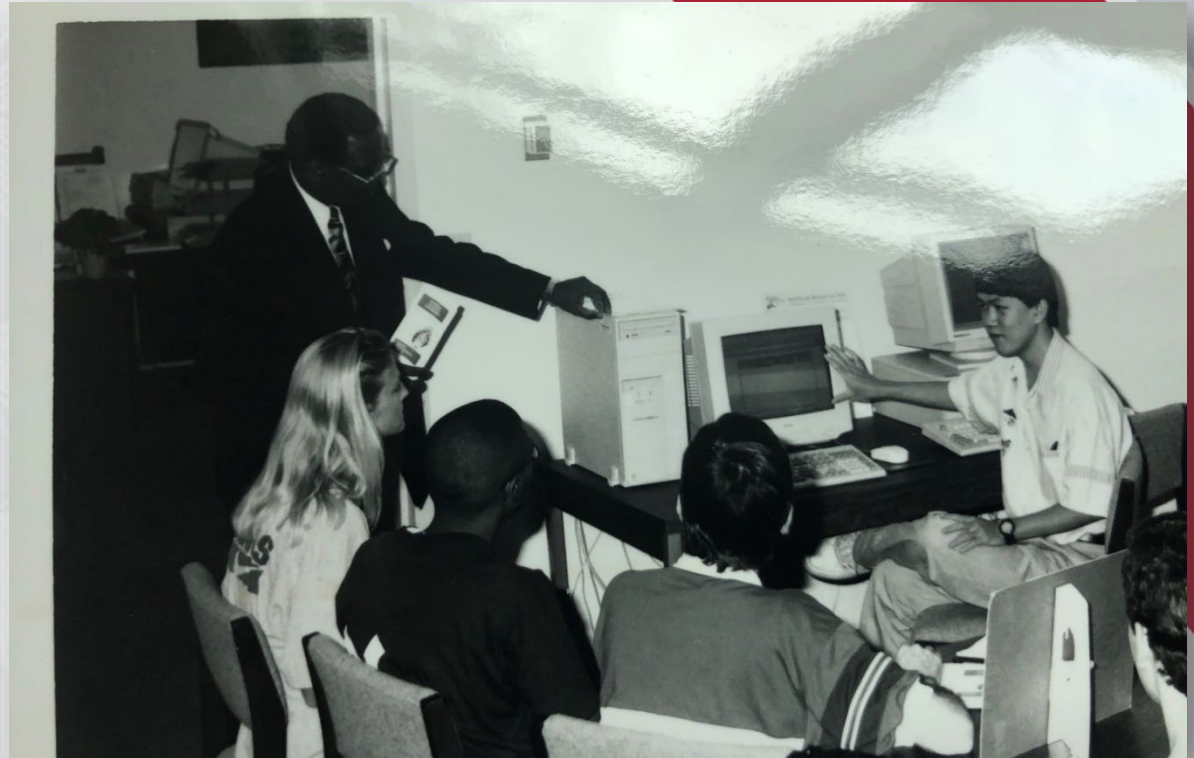
**College of Social Work and Criminal
Justice**

#OwlInToGraduation

FLORIDA ATLANTIC UNIVERSITY

How It Started

Career Center, 1965



FIRST-YEAR SOAR
STUDENT ORIENTATION, ACADEMICS AND RESOURCES
FLORIDA ATLANTIC UNIVERSITY • NEW STUDENT ORIENTATION

How It's Going

Career Center, 2021



FIRST-YEAR SOAR
STUDENT ORIENTATION, ACADEMICS AND RESOURCES
FLORIDA ATLANTIC UNIVERSITY • NEW STUDENT ORIENTATION



CAREER CENTER

APPOINTMENTS

In-person at the Boca Raton, Davie and
Jupiter campuses

Virtual and evening sessions available

DROP-IN CAREER COACHING

No appointment necessary

Monday - Friday Virtual 9 a.m. - 1 p.m.

In-person at the Boca Raton campus 1 - 5 p.m.

BUILD TOWARD YOUR FUTURE

MEET WITH A CAREER COACH FOR HELP WITH:



Deciding a major/career



Developing job and internship search strategies



Building résumés, cover letters,
and LinkedIn profiles



Connecting and networking with employers
through Handshake



Planning and applying for graduate and
professional school



Preparing and practicing for interviews

SCHEDULE AN APPOINTMENT TODAY AT [FAU.JOINHANDSHAKE.COM](https://fau.joinhandshake.com)

3

Things To Do Before Classes Start ...
To Be Career Ready



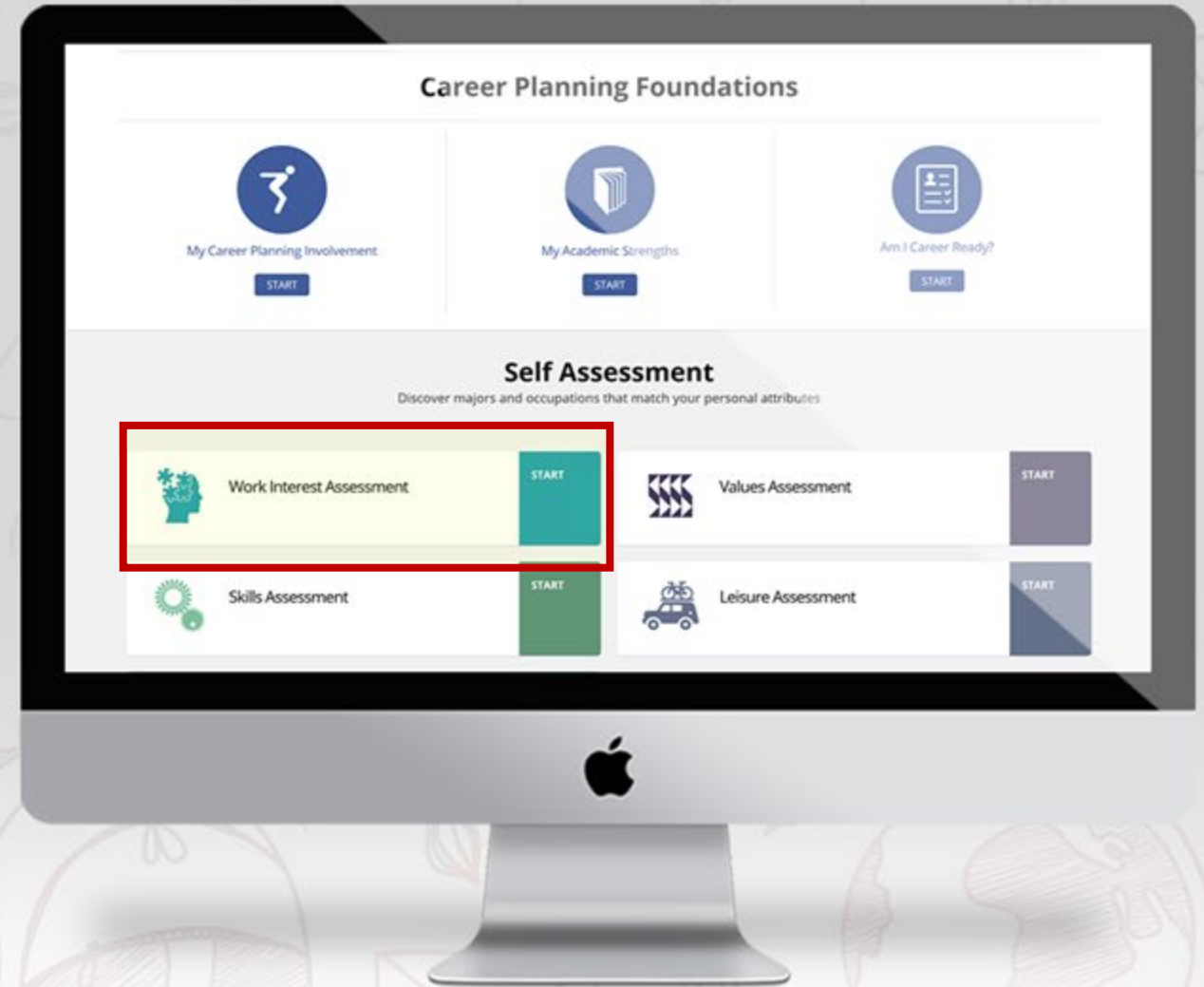
FIRST-YEAR SOAR
STUDENT ORIENTATION, ACADEMICS AND RESOURCES
FLORIDA ATLANTIC UNIVERSITY • NEW STUDENT ORIENTATION

Major KnOWLedge is an early exploration tool that helps FAU students identify personal interests and their relationships to career pathways.

Major KnOWLedge involves two steps:

-  1. Complete a Work Interest Assessment.
-  2. Meet with the FAU Career Center to review your results.

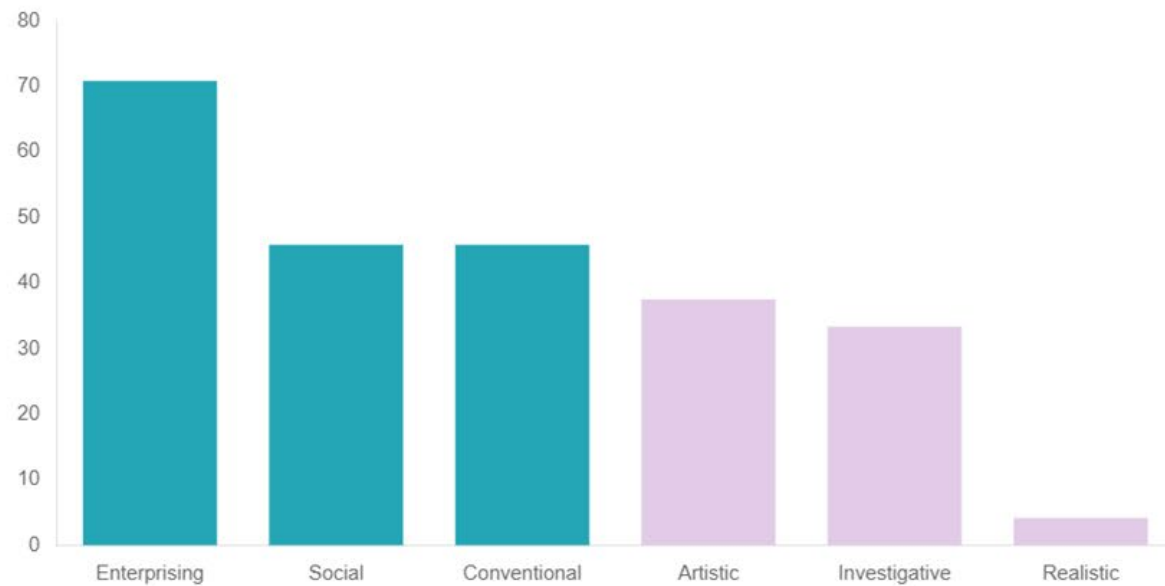
Visit fau.edu/career/majorknowledge/ to learn more.



Work Interest Assessment

YOUR RESULTS

The first three work interest areas shown on the graph and described below are most important to you.



E **Enterprising**
The Persuaders

S **Social**
The Helpers

C **Conventional**
The Organizers

Your Work Interest Holland Code is:

ESC



FIRST-YEAR SOAR
STUDENT ORIENTATION, ACADEMICS AND RESOURCES
FLORIDA ATLANTIC UNIVERSITY • NEW STUDENT ORIENTATION

Work Interest Assessment

E**Enterprising**
The Persuaders**S****Social**
The Helpers**C****Conventional**
The Organizers

Your Work Interest Holland Code is:

ESC Filter Results ICON LEGEND

Occupations Matching Your Results

OCCUPATION	SUPPORTING MAJORS/PROGRAMS AT FLORIDA ATLANTIC UNIVERSITY	US NATIONAL MEAN SALARY	JOB FAMILY
ARBITRATOR 	French Italian Criminal Justice/Safety Studies Political Science	\$72,730.00	Legal



FIRST-YEAR SOAR
STUDENT ORIENTATION, ACADEMICS AND RESOURCES
FLORIDA ATLANTIC UNIVERSITY • NEW STUDENT ORIENTATION

Self Assessment

Discover majors and occupations that match your personal attributes



Work Interest Assessment

100% Complete

RESULTS

[Review](#)

[Start Over](#)

Explore the Possibilities

Use these tools for ongoing career and education exploration

[What can I do with a major in ... Offered at Florida Atlantic University? ➞](#)

[Explore any Occupation ➞](#)

[Explore Occupations by Job Family ➞](#)

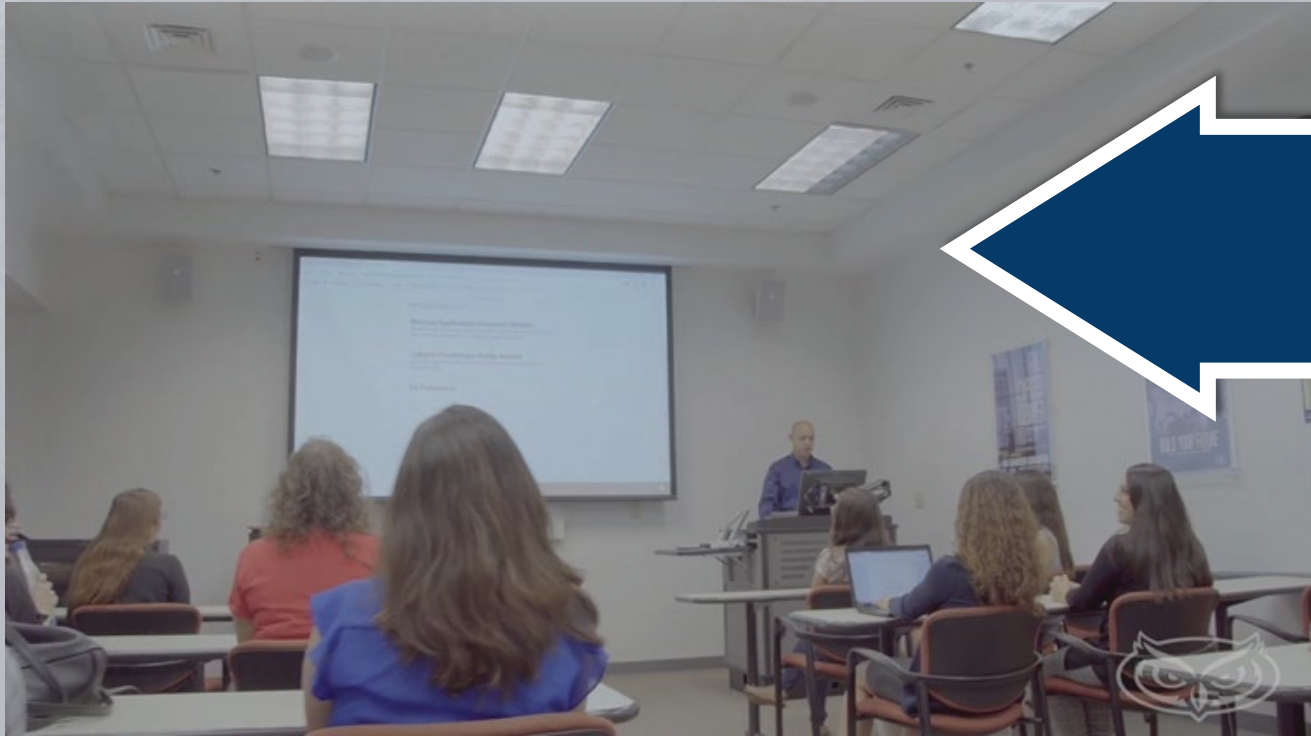
[Compare 2 Occupations Side by Side ➞](#)



FIRST-YEAR SOAR
STUDENT ORIENTATION, ACADEMICS AND RESOURCES
FLORIDA ATLANTIC UNIVERSITY • NEW STUDENT ORIENTATION

Still Deciding?

Sign up for SLS 1301



1-credit elective course

This class provides an overview of career development theories and decision-making skills for career/life planning.

Focuses on:

- ✓ self-assessment
- ✓ deciding a major
- ✓ exploring career options
- ✓ developing an action plan

All to help you achieve your career goals!



FIRST-YEAR SOAR
STUDENT ORIENTATION, ACADEMICS AND RESOURCES
FLORIDA ATLANTIC UNIVERSITY • NEW STUDENT ORIENTATION



See how handshake can help build toward your future.



Search for full or part-time job opportunities



Find an internship on and off campus



Register for career events



Sign-up for interviews to meet employers



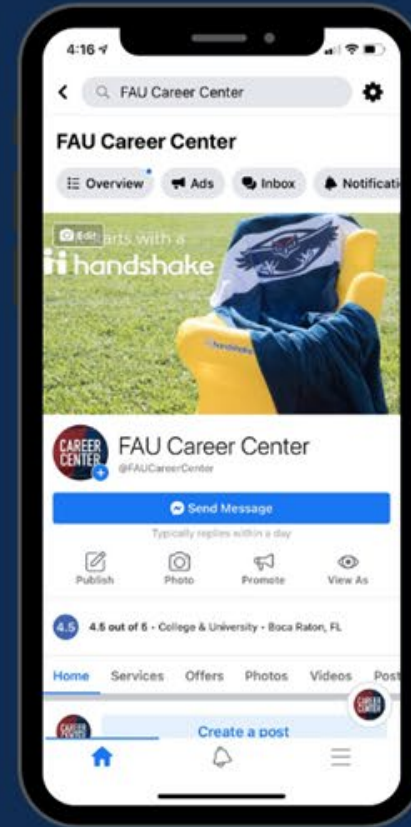
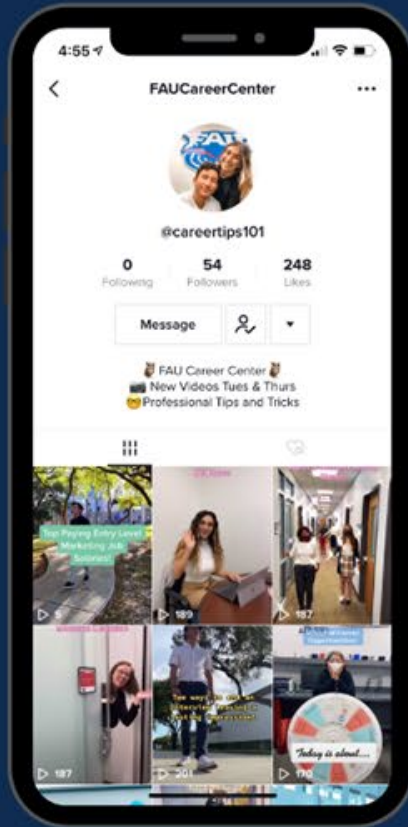
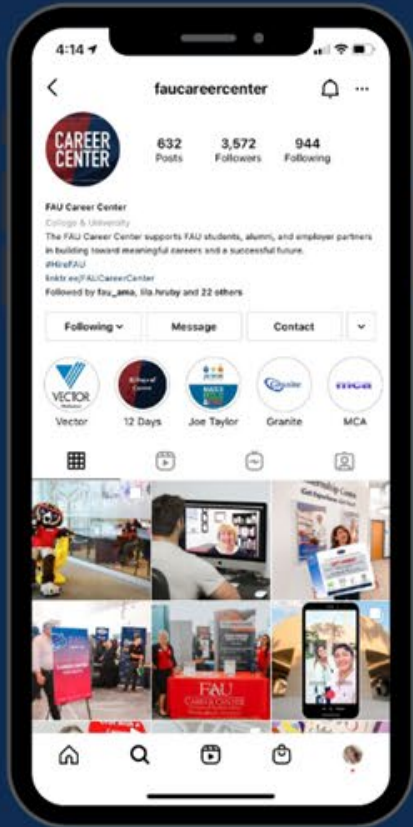
Schedule appointments for career services

TO CLAIM YOUR ACCOUNT VISIT **FAU.JOINHANDSHAKE.COM**



Let's Stay Connected!

Follow us on our socials



@FAUCareerCenter



@CareerTips101



@FAU Career Center



@FAUCareerCenter



FAU CAREER CENTER

career@fau.edu | 561-297-3533 | fau.edu/career



Contact Information



Dawn Kesselman
**Career Counselor for Social
Work and Criminal Justice
Majors**

dfriedman2012@fau.edu



FIRST-YEAR SOAR
STUDENT ORIENTATION, ACADEMICS AND RESOURCES
FLORIDA ATLANTIC UNIVERSITY • NEW STUDENT ORIENTATION

The logo for Florida Atlantic University (FAU), featuring the letters 'FAU' in a stylized, serif font. The 'F' and 'A' are connected, and the 'U' has a unique design with a horizontal bar.

COLLEGE OF SOCIAL WORK AND CRIMINAL JUSTICE

Florida Atlantic University



Social Work

Phyllis and Harvey Sandler School of Social Work

Provides for an undergraduate education that contributes to the well-being of the communities of Florida and educates competent and compassionate social workers for entry-level practice.

- 120 credits total, minimum 2.5 gpa core courses
- Graduate pathway program
 - MSW, Advance Standing & DSW
- Earn a grade of C or higher in all SOW classes
- 15 credit Minor *****NEW*****
- Book Lending Program
- Students of Social Work (SOS) & Phi Alpha Honor Society



FIRST-YEAR SOAR
STUDENT ORIENTATION, ACADEMICS AND RESOURCES
FLORIDA ATLANTIC UNIVERSITY • NEW STUDENT ORIENTATION

Field Education Internship

- Required for graduation
- 12 Credit hours total
- Last class before graduation
 - 400 hours
 - Real life experience in agencies



FIRST-YEAR SOAR
STUDENT ORIENTATION, ACADEMICS AND RESOURCES
FLORIDA ATLANTIC UNIVERSITY • NEW STUDENT ORIENTATION

Social Work Certificates

Child Welfare Certificate



Healthy Aging Certificate



FIRST-YEAR SOAR
STUDENT ORIENTATION, ACADEMICS AND RESOURCES
FLORIDA ATLANTIC UNIVERSITY • NEW STUDENT ORIENTATION

Criminal Justice

School of Criminology and Criminal Justice

Provides students with knowledge about the nature and causes of crime and delinquency, law and the legal system for juveniles and adults in American society, and the decision processes of criminal justice agencies.

- 120 Credit hours total including IFP
- Fully in-person or Fully online program available
- Freshmen are required to take **CCJ2002**
- Earn a grade of C or higher in all CJ classes
- 15 credit minor
- FAU Criminal Justice Club & Alpha Phi Sigma – national honor society for CJ



FIRST-YEAR SOAR
STUDENT ORIENTATION, ACADEMICS AND RESOURCES
FLORIDA ATLANTIC UNIVERSITY • NEW STUDENT ORIENTATION

Combined Masters & etc.

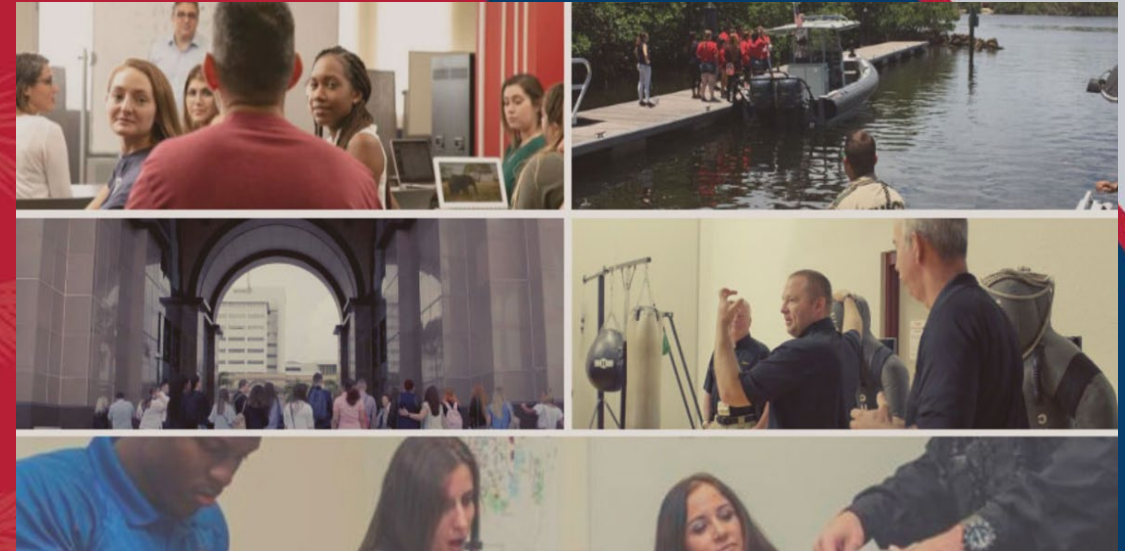
- Jumpstart your master's degree during your senior year:
 - Complete up to 12 graduate level credits
 - Must have at least a 3.5 GPA
 - Scholarships available
- Research opportunities
- Study Abroad in Scotland
- Use of Force Simulator



FIRST-YEAR SOAR
STUDENT ORIENTATION, ACADEMICS AND RESOURCES
FLORIDA ATLANTIC UNIVERSITY • NEW STUDENT ORIENTATION

Criminal Justice Internship

- Not required but encouraged
- 3 credits (CCJ4940)
- 2.5 GPA minimum
- Must be a 2nd semester Junior/ Senior
- Potential Agencies Includes:
 - Broward County Public Defender's Office
 - Palm Beach County Sheriff's Office
 - Florida Highway Patrol
 - Florida Fish & Wildlife Conservation Commission
 - Secret Service/Homeland Security



FIRST-YEAR SOAR
STUDENT ORIENTATION, ACADEMICS AND RESOURCES
FLORIDA ATLANTIC UNIVERSITY • NEW STUDENT ORIENTATION

Meet your SWCJ Advisors



Chandra McKinney Clarke – cmckinney@fau.edu
Academic Advisor

Undergraduate Advisors



Todd Hedrick – thedrick@fau.edu
Director



Fabio Rojas – frojas4@fau.edu
Academic Advisor



Kaitlyn Fallik – kfallik@fau.edu
Academic Advisor

Graduate Advisor



Dr. Kelly Roy – kroy7@fau.edu



Keva Anderson-Konsker – kanderso@fau.edu
Retention Specialist



FIRST-YEAR SOAR
STUDENT ORIENTATION, ACADEMICS AND RESOURCES
FLORIDA ATLANTIC UNIVERSITY • NEW STUDENT ORIENTATION

University Advising Services

University Advising Services will be your primary resource for the following:

- Course advising
- Academic policies and information
- Changing or declaring majors
- Making appropriate referrals to important resources on campus
- Academic questions



FIRST-YEAR SOAR
STUDENT ORIENTATION, ACADEMICS AND RESOURCES
FLORIDA ATLANTIC UNIVERSITY • NEW STUDENT ORIENTATION

READ

Email is FAU's main form of communication. All emails will be sent to your FAU email. Please check your email daily!

- Expect emails from your academic advisor for:
 - Summer and Fall advising
 - Midterm grades
 - Important updates or information



FIRST-YEAR SOAR
STUDENT ORIENTATION, ACADEMICS AND RESOURCES
FLORIDA ATLANTIC UNIVERSITY • NEW STUDENT ORIENTATION

READ

Your **syllabi** will provide an outline for assignments, grading, exams, instructions, and instructor contact information.

- It is expected that you read your syllabi at the beginning and throughout the semester
- Your syllabi can be found on Canvas



FIRST-YEAR SOAR
STUDENT ORIENTATION, ACADEMICS AND RESOURCES
FLORIDA ATLANTIC UNIVERSITY • NEW STUDENT ORIENTATION

READ

Please read your advisor's comments on EZ Advising and all emails in your FAU email in box

- Do you still need to send important documents to FAU?
 - AP / IB / AICE / Dual Enrollment / Transfer credits?



FIRST-YEAR SOAR
STUDENT ORIENTATION, ACADEMICS AND RESOURCES
FLORIDA ATLANTIC UNIVERSITY • NEW STUDENT ORIENTATION

KNOW What Is Happening & When



FIRST-YEAR SOAR
STUDENT ORIENTATION, ACADEMICS AND RESOURCES
FLORIDA ATLANTIC UNIVERSITY • NEW STUDENT ORIENTATION

IMPORTANT DATES

Spring Semester

- Classes begin: Saturday, January 8th
- Last Day to add/drop: Friday, January 14th
- Last Day to withdraw from Full Term classes: Friday, March 25th

SCHEDULE ADVISING APPOINTMENT:

- After MLK Day: Monday, January 17th



FIRST-YEAR SOAR
STUDENT ORIENTATION, ACADEMICS AND RESOURCES
FLORIDA ATLANTIC UNIVERSITY • NEW STUDENT ORIENTATION

Use Your Tools & Resources



FIRST-YEAR SOAR
STUDENT ORIENTATION, ACADEMICS AND RESOURCES
FLORIDA ATLANTIC UNIVERSITY • NEW STUDENT ORIENTATION

Success Network

Your Success Network connects you to your support system

- Your academic advisor
- Professors
- Tutors
- Financial aid counselor

[Click Here for a Success Network Tutorial](#)

You will log into Success Network to schedule appointments with your academic advisor at University Advising Services



FIRST-YEAR SOAR
STUDENT ORIENTATION, ACADEMICS AND RESOURCES
FLORIDA ATLANTIC UNIVERSITY • NEW STUDENT ORIENTATION

Intellectual Foundations Program (IFP)



FIRST-YEAR SOAR
STUDENT ORIENTATION, ACADEMICS AND RESOURCES
FLORIDA ATLANTIC UNIVERSITY • NEW STUDENT ORIENTATION

DARS (Degree Audit)

The Degree Audit Reporting System (DARS) displays what courses you need and how they apply toward your degree program.

How to run your DARS



FIRST-YEAR SOAR
STUDENT ORIENTATION, ACADEMICS AND RESOURCES
FLORIDA ATLANTIC UNIVERSITY • NEW STUDENT ORIENTATION

Academic Success Resources

Supplemental Instruction (SI) provides students with academic support for courses. [Click Here for SI Information](#)

The Center for Teaching & Learning (CTL) provides many more academic support resources and tutoring for math, writing, science, and other subjects. [Click Here for Tutoring Information](#)



FIRST-YEAR SOAR
STUDENT ORIENTATION, ACADEMICS AND RESOURCES
FLORIDA ATLANTIC UNIVERSITY • NEW STUDENT ORIENTATION

Policies You Should Know Now



FIRST-YEAR SOAR
STUDENT ORIENTATION, ACADEMICS AND RESOURCES
FLORIDA ATLANTIC UNIVERSITY • NEW STUDENT ORIENTATION

Foreign Language

ARA 1120/1121 – Beginning Arabic I/II
FOL 1120/1121 – Beginning Chinese I/II
FRE 1120/1121 – Beginning French I/II (must take Placement Exam)
GER 1120/1121 – Beginning German I/II
HBR 1120/1121 – Beginning Hebrew I/II
ITA 1120/1121 – Beginning Italian I/II
JPN 1120/1121 – Beginning Japanese I/II
LAT 1120/1121 – Beginning Latin I/II
SPN 1120/1121 – Beginning Spanish I/II (must take Placement Exam)

IMPORTANT TO NOTE:

- For SWCJ, Foreign Language is a graduation requirement for Criminal Justice Only.
- If you have taken 2 years of a language in high school, the Languages & Linguistics Department requires you to start with the 1121 level.
- All courses are 4 credits



FIRST-YEAR SOAR
STUDENT ORIENTATION, ACADEMICS AND RESOURCES
FLORIDA ATLANTIC UNIVERSITY • NEW STUDENT ORIENTATION

Withdrawal Policy (W Policy)

Undergraduate students may not withdraw (with a grade of “W” or “ZR”) from more than 2 courses at the lower-division level (1000- and 2000-level courses) and from more than 3 courses at the upper-division or higher level (3000- and 4000-level courses.)

Always speak with your academic advisor before making any decision to withdraw from a course.



FIRST-YEAR SOAR
STUDENT ORIENTATION, ACADEMICS AND RESOURCES
FLORIDA ATLANTIC UNIVERSITY • NEW STUDENT ORIENTATION

FAU Civic Literacy Requirement

To graduate from FAU with any degree, students entering this Spring must meet the Florida Civic Literacy statute by completing both a course and exam.

Courses	Civic Literacy Exam Requirement
AP, AICE, or IB U.S. Government or History credit	Requirements change based on credit type; consult with your Academic Advisor
50 or higher on American Gov. CLEP exam	Civic Literacy Requirement is met
Passing grade in POS 2041 (Government of the U.S.) or AMH 2020 (U.S. History since 1877)	Must take Exam and score 60 or higher: U.S. Citizenship and Immigration Services Naturalization Test or Florida Civic Literacy Examination (FCLE)

For more information Requirements and Exams, visit
<https://www.fau.edu/ugstudies/civic-literacy-requirement/>



FIRST-YEAR SOAR
STUDENT ORIENTATION, ACADEMICS AND RESOURCES
FLORIDA ATLANTIC UNIVERSITY • NEW STUDENT ORIENTATION

Withdrawal Policy (W Policy)

Current Undergraduate Program Withdrawal Counts : You may not drop course(s) more than the Limitations on Number of Withdrawals policy.

Course Level	Withdrawal Limit	Current Total Withdrawals	Future Withdrawals Allowed
Lower-Division Level	2	0	2
Upper-Division Level	3	0	3



FIRST-YEAR SOAR
STUDENT ORIENTATION, ACADEMICS AND RESOURCES
FLORIDA ATLANTIC UNIVERSITY • NEW STUDENT ORIENTATION

Questions?



FIRST-YEAR SOAR
STUDENT ORIENTATION, ACADEMICS AND RESOURCES
FLORIDA ATLANTIC UNIVERSITY • NEW STUDENT ORIENTATION

Your College Breakout Session is complete!

- Please head back to your small group Parliament breakout rooms. To get there, use the same link that you used to access your Parliament group earlier.
- Enjoy the rest of your day SOARing with us!



FIRST-YEAR SOAR
STUDENT ORIENTATION, ACADEMICS AND RESOURCES
FLORIDA ATLANTIC UNIVERSITY • NEW STUDENT ORIENTATION