



# FIRST-YEAR SOAR

STUDENT ORIENTATION, ACADEMICS AND RESOURCES

*Charles E. Schmidt College of Science*  
**#OwlIn to Graduation**

FLORIDA ATLANTIC UNIVERSITY

# Learning Outcomes

## You will...

- ▶ Learn about the majors, minors, certificate available in the college.
- ▶ Learn more about what the college of science offers.
- ▶ Learn about the career center and its services.
- ▶ Understand the purpose of academic advising.
- ▶ Identify the FAU personnel in your Success Network
- ▶ List and explain the IFP registration options for the College of Science

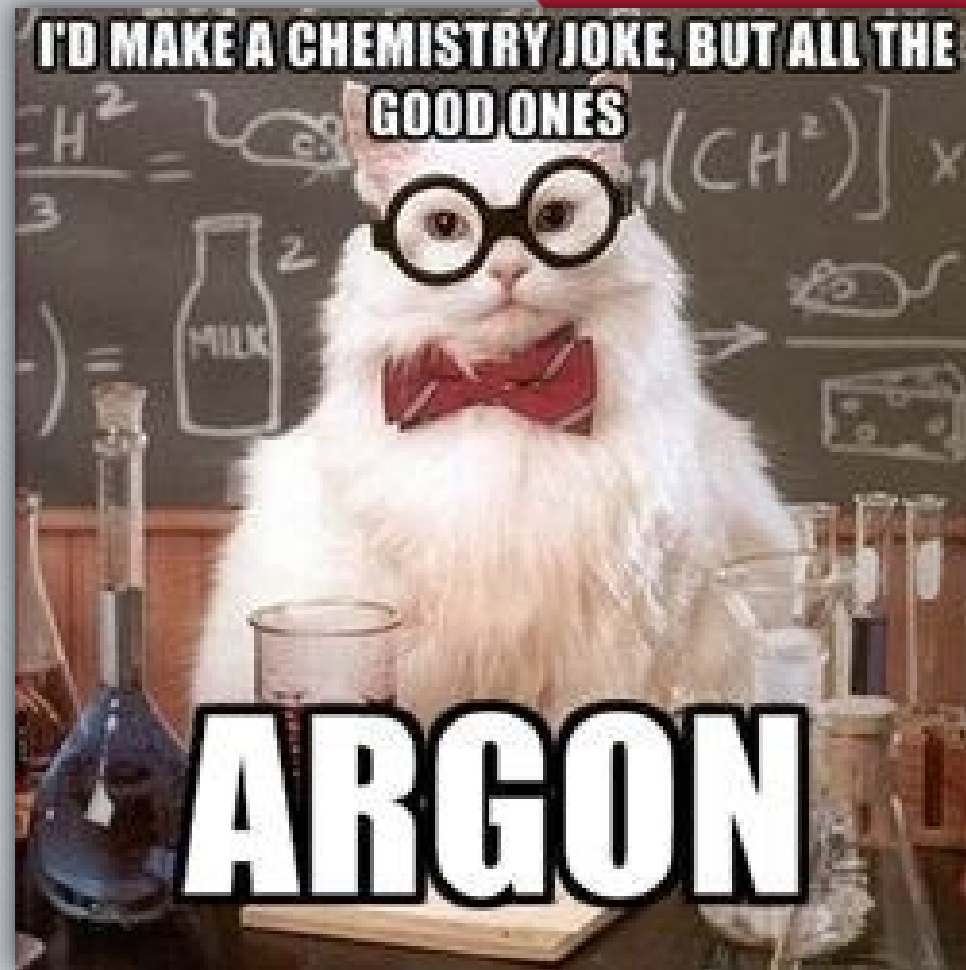


**FIRST-YEAR SOAR**  
STUDENT ORIENTATION, ACADEMICS AND RESOURCES  
FLORIDA ATLANTIC UNIVERSITY • NEW STUDENT ORIENTATION

**FIRST-YEAR SOAR**  
STUDENT ORIENTATION, ACADEMICS AND RESOURCES  
FLORIDA ATLANTIC UNIVERSITY • NEW STUDENT ORIENTATION



# Why Study Science?



**FIRST-YEAR SOAR**  
STUDENT ORIENTATION, ACADEMICS AND RESOURCES  
FLORIDA ATLANTIC UNIVERSITY • NEW STUDENT ORIENTATION

# Scientists.....

- 🌀 Make new discoveries.
- 🌀 Create the future.
- 🌀 Develop excellent critical thinking skills fostered through the scientific method.
- 🌀 Quench their natural love for learning.
- 🌀 Work within many disciplines.
- 🌀 Are prepared to excel in some of the fastest growing career areas.



**FIRST-YEAR SOAR**  
STUDENT ORIENTATION, ACADEMICS AND RESOURCES  
FLORIDA ATLANTIC UNIVERSITY • NEW STUDENT ORIENTATION

# Degree Programs

## Majors

- ☐ BA/BS Biological Science
- ☐ BA/BS Chemistry (ACS)
- ☐ BS Chemistry: Biochemistry Concentration
- ☐ BS Data Science and Analytics (Natural Science Concentration)
- ☐ BS Exercise Science & Health Promotions
- ☐ BA/BS Geoscience
- ☐ BA Health Science
- ☐ BS Neuroscience and Behavior
- ☐ BA/BS Physics
- ☐ BA Psychology
- ☐ BA/BS Math
- ☐ BS Medical Biology
- ☐ Bachelor of Urban Design
- ☐ Bachelor of Urban Regional Planning



**FIRST-YEAR SOAR**  
STUDENT ORIENTATION, ACADEMICS AND RESOURCES  
FLORIDA ATLANTIC UNIVERSITY • NEW STUDENT ORIENTATION



# Minors

- Biology
- Geography
- Psychology
- Mathematics
- Geology
- Statistics
- Physics

# Certificates

- Environmental Studies
- Biotechnology
- Data Science
- Geographic Information Systems
- Actuarial Science
- Statistics
- Mental Health



**FIRST-YEAR SOAR**  
STUDENT ORIENTATION, ACADEMICS AND RESOURCES  
FLORIDA ATLANTIC UNIVERSITY • NEW STUDENT ORIENTATION

# Pre-Health Professions Program

For students interested in medical, dental, veterinary, and other professional training in the health sciences (other than Nursing).

We assist in preparing students to matriculate into graduate professional schools.

## Requirements for Pre-health Professions Advising

### No Admission Requirements

- Advising for this program takes place in the Pre-Health Professions Office (SE 308).
- Students must maintain a 3.0 GPA to continue pre-health advising.
- Students are expected to participate in shadowing and volunteering (100 minimum) as part of pre-health advising program.



**FIRST-YEAR SOAR**  
STUDENT ORIENTATION, ACADEMICS AND RESOURCES  
FLORIDA ATLANTIC UNIVERSITY • NEW STUDENT ORIENTATION



# Components of the Pre-Health Professions Program

- ✓ First Year Interest Groups
- ✓ Pre-Health Courses:
  - *Introduction to Pre-Professional Studies* with lab
  - *Medical Internship* for shadowing experience
- ✓ Pre-Health Professions Week
- ✓ Pre-Health Workshops-tailored to student needs. (basics, beyond basics, financing, application, interviewing)
- ✓ Mock medical school interview with Pre-Health Professions Committee
- ✓ “Wall of Fame” recognition for accepted students
- ✓ Future Doctors reception for all students accepted into medical, veterinary, or dental school.
- ✓ MCAT prep course taught by FAU Science faculty.



**FIRST-YEAR SOAR**  
STUDENT ORIENTATION, ACADEMICS AND RESOURCES  
FLORIDA ATLANTIC UNIVERSITY • NEW STUDENT ORIENTATION

# Science@FAU Highlights



- 🌀 Eminent Scholars in Science, Brain Sciences and Marine Biology
- 🌀 Education and research partnerships with Scripps Florida, the Max Planck Florida Institute and the Torrey Pines Institute for Molecular Studies
- 🌀 Professional Science Master's Degrees in Medical Physics, Masters in Marine Science and Oceanography and Business Biotechnology, Masters Data Science
- 🌀 Six Research Centers of Excellence: Complex Systems and Brain Sciences, Biological and Materials Physics, Environmental Studies, Molecular Biology and Biotechnology, and Geo-Information Science, Cryptology and Information Security.
- 🌀 Home of the FAU Astronomical Observatory
- 🌀 Harbor Branch Oceanographic Institute and Gumbo Limbo



**FIRST-YEAR SOAR**  
STUDENT ORIENTATION, ACADEMICS AND RESOURCES  
FLORIDA ATLANTIC UNIVERSITY • NEW STUDENT ORIENTATION



# Research



## Importance of Research

- Having a research experience can teach you skills of academic inquiry beyond what you can learn in the classroom.
- It is an opportunity to be curious, inventive, and creative.
- It will allow you to engage in a particular subject in great detail.
- Research helps to develop competencies such as critical thinking, teamwork, communication, reliability, dependability, resilience, adaptability, and capacity for improvement.

## Ways to Engage in Research

- Laboratory and clinical trials
  - Volunteer
  - Receive course credit
- Student can participate in DIR(Directed Independent Research) which is an option for all majors in the college.



**FIRST-YEAR SOAR**  
STUDENT ORIENTATION, ACADEMICS AND RESOURCES  
FLORIDA ATLANTIC UNIVERSITY • NEW STUDENT ORIENTATION





# NSF-LEARN Program



**Research Scholarship Program for Science, Technology,  
Engineering, and Math (STEM) Students**



**FIRST-YEAR SOAR**  
STUDENT ORIENTATION, ACADEMICS AND RESOURCES  
FLORIDA ATLANTIC UNIVERSITY • NEW STUDENT ORIENTATION



## What's in it for you?

- Structured help adjusting to FAU
- \$500 scholarship
- Priority registration
- 2 free research focused courses
- Mentorship by faculty and peers
- Academic, social, and community events
- Leadership and networking opportunities
- Hands-on research experience in your field of interest

## Eligibility

- ✓ Incoming from high school
- ✓ Have a declared major in the College of Science or College of Engineering and Computer Science
- ✓ Pursue a Bachelor of Science (B.S.) degree
- ✓ High school GPA of 3.6 or higher
- ✓ SAT score of 1100 or higher or ACT score of 22 or higher



**FIRST-YEAR SOAR**  
STUDENT ORIENTATION, ACADEMICS AND RESOURCES  
FLORIDA ATLANTIC UNIVERSITY • NEW STUDENT ORIENTATION



# Honors Options

- Biology-Introduction to Honors and Honors Thesis in Biology
- Honors in Mathematics
- Upper-Division Honors in Psychology
- MAX Planck Honor Program(high school GPA, National Merit)

# Clubs

- The Math Club
- Chemistry Club
- Psychology Club
- Geo Club
- Society of Physics students



**FIRST-YEAR SOAR**  
STUDENT ORIENTATION, ACADEMICS AND RESOURCES  
FLORIDA ATLANTIC UNIVERSITY • NEW STUDENT ORIENTATION



## Workshop/Seminars

- ❖ The college of science offers a variety of workshops designed to help you navigate your academics and career goals.
- ❖ The university offers series of lectures called “The Frontiers in Science”. These public lectures are geared towards providing a deeper understand of science.

## Internships

- ❖ The college offers a paid and unpaid internship course opportunity with your major in mind.
- ❖ The college also offers a medical shadowing internship (unpaid shadowing opportunity)



**FIRST-YEAR SOAR**  
STUDENT ORIENTATION, ACADEMICS AND RESOURCES  
FLORIDA ATLANTIC UNIVERSITY • NEW STUDENT ORIENTATION

# First-Year Interest Groups (FIGS)

In a FIG, you:

- take a 1-credit course with 24 other students who share similar majors.
- have a seminar class that led by faculty and advisors from your specific college.
- have an opportunity to build relationships within your college as soon as classes begin.
- get the inside scoop on what it takes to excel in your major.
- have an opportunity to build a community that makes this large research university feel like home

College of Science  
and Pre-Health FIGS:

- ❖ **Exploring Behavioral Science**
- ❖ **Healthcare and Society FIG**
- ❖ **Success in Science**
- ❖ **Pre-Health Professions**



**Learn more and enroll at:**  
[fau.edu/academicsuccess](https://fau.edu/academicsuccess)



**FIRST-YEAR SOAR**  
STUDENT ORIENTATION, ACADEMICS AND RESOURCES  
FLORIDA ATLANTIC UNIVERSITY • NEW STUDENT ORIENTATION



# To learn more about getting engaged with science...

- ❑ Visit [www.science.fau.edu](http://www.science.fau.edu) (or contact a College of Science Advisor)
- ❑ To learn more about research opportunities in general visit The Office of Undergraduate Research and Inquiry. <http://www.fau.edu/ouri/>



**FIRST-YEAR SOAR**  
STUDENT ORIENTATION, ACADEMICS AND RESOURCES  
FLORIDA ATLANTIC UNIVERSITY • NEW STUDENT ORIENTATION





**FIRST-YEAR SOAR**  
STUDENT ORIENTATION, ACADEMICS AND RESOURCES  
FLORIDA ATLANTIC UNIVERSITY • NEW STUDENT ORIENTATION

# #OwlInToGraduation

## FAU Career Center

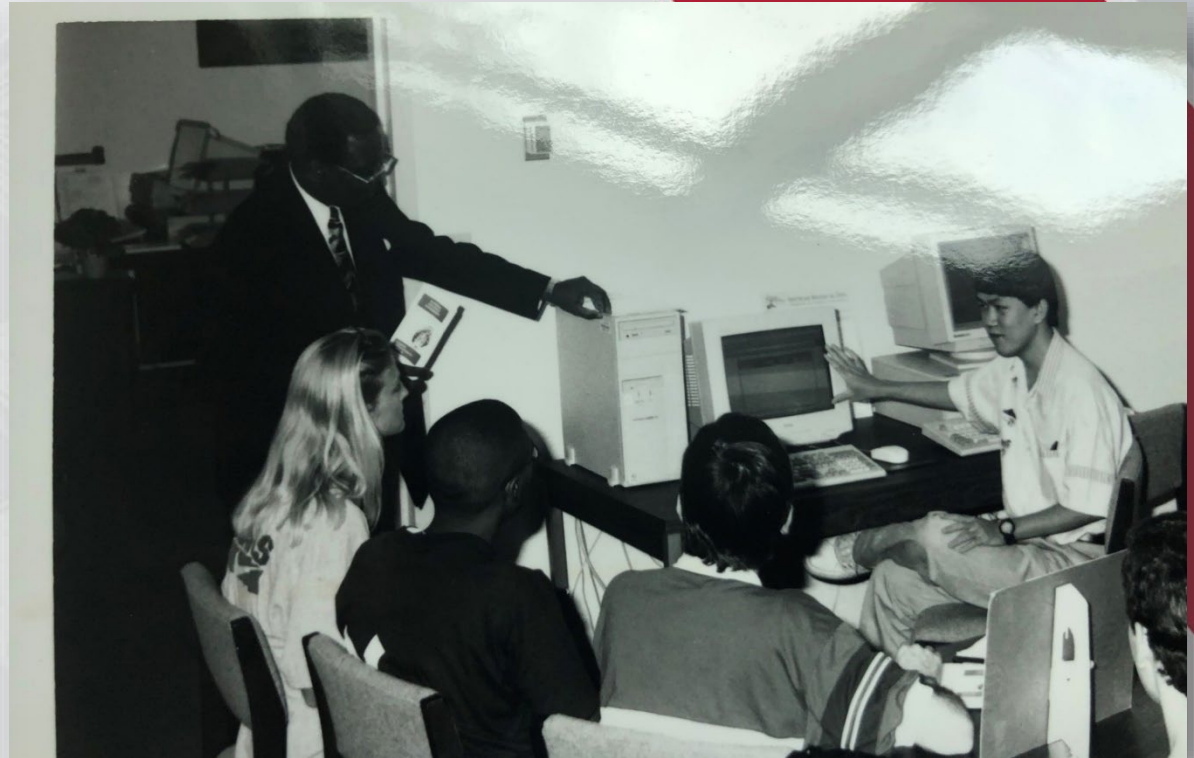
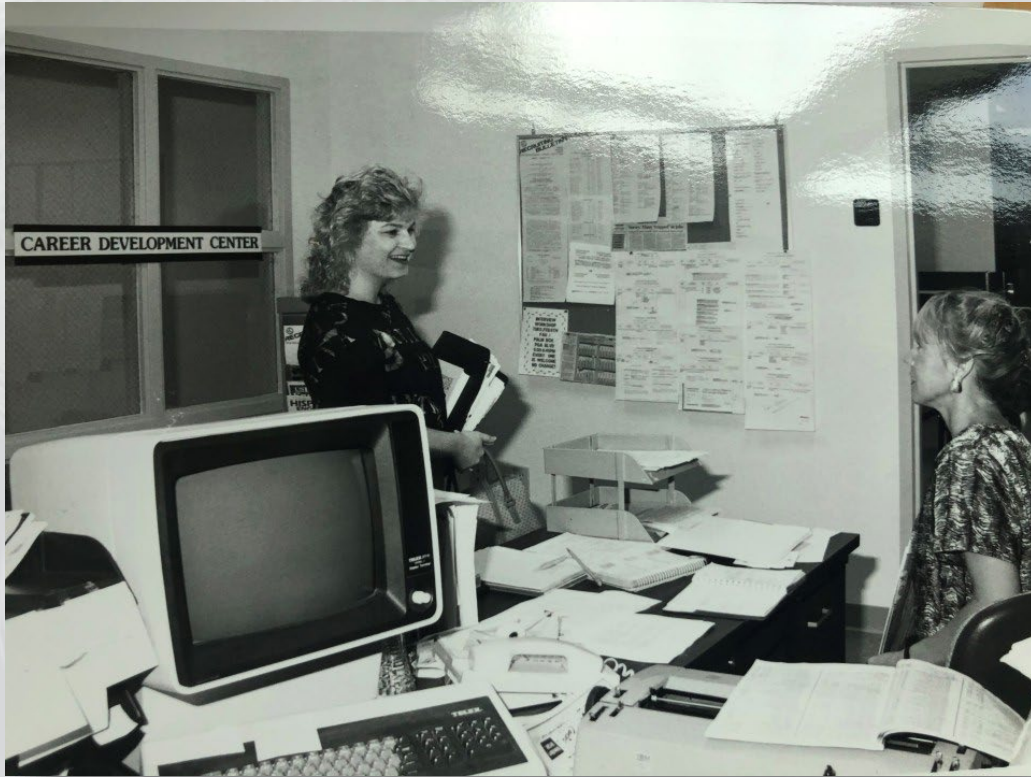


**FIRST-YEAR SOAR**  
STUDENT ORIENTATION, ACADEMICS AND RESOURCES  
FLORIDA ATLANTIC UNIVERSITY • NEW STUDENT ORIENTATION



# How It Started

## *Career Center, 1965*



**FIRST-YEAR SOAR**  
STUDENT ORIENTATION, ACADEMICS AND RESOURCES  
FLORIDA ATLANTIC UNIVERSITY • NEW STUDENT ORIENTATION



# How It's Going *Career Center, 2021*



**FIRST-YEAR SOAR**  
STUDENT ORIENTATION, ACADEMICS AND RESOURCES  
FLORIDA ATLANTIC UNIVERSITY • NEW STUDENT ORIENTATION





## APPOINTMENTS

Video Chat and Phone Sessions available  
Boca Raton, Davie and Jupiter campuses

## DROP-IN CAREER ADVISING

Virtual drop-in career advising available;  
No appointment necessary  
Monday – Friday 1 – 4 p.m.

# BUILD TOWARD YOUR FUTURE

## MEET WITH A CAREER COACH FOR HELP WITH:



Deciding a major/career



Developing job and internship search strategies



Building résumés, cover letters,  
and LinkedIn profiles



Connecting and networking with employers  
through Handshake



Planning and applying for graduate and  
professional school



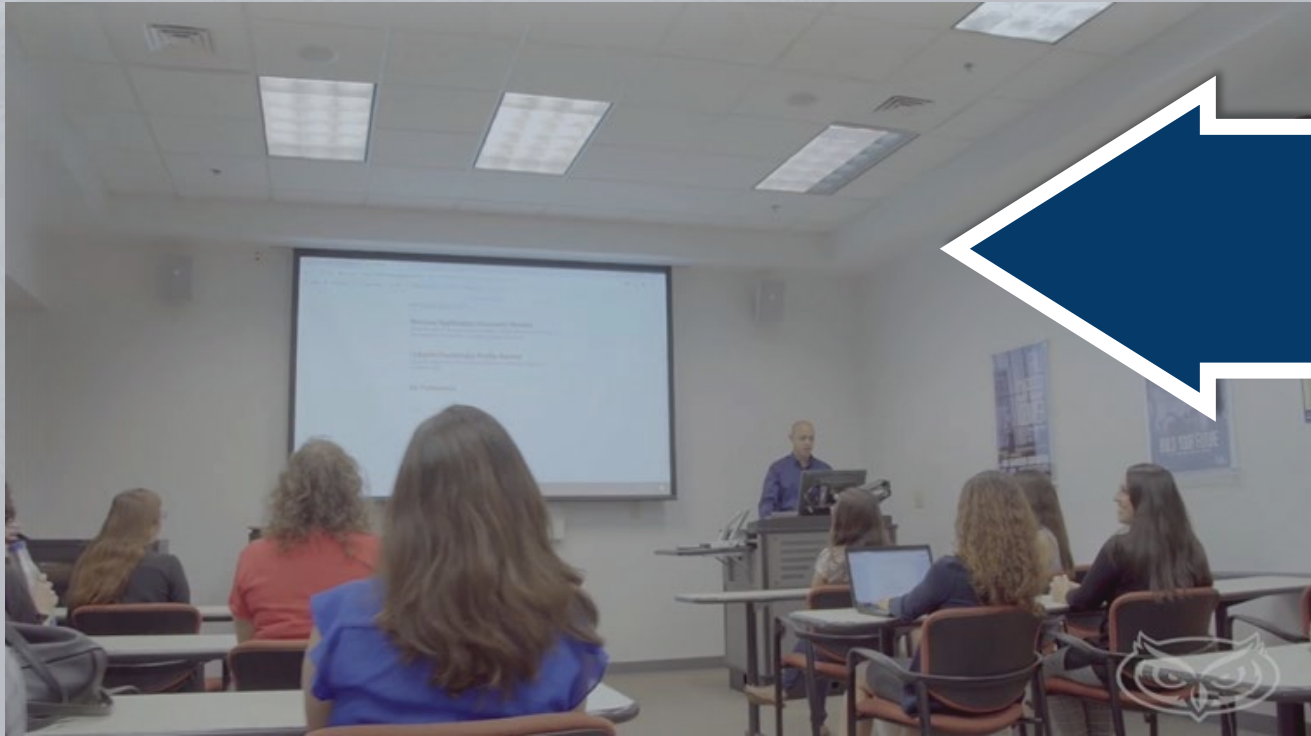
Preparing and practicing for interviews

SCHEDULE AN APPOINTMENT TODAY AT [FAU.JOINHANDSHAKE.COM](https://fau.joinhandshake.com)



# Still Deciding?

## Sign up for SLS 1301



### 1-credit elective course

*This class provides an overview of career development theories and decision-making skills for career/life planning.*

#### Focuses on:

- ✓ self-assessment
- ✓ deciding a major
- ✓ exploring career options
- ✓ developing an action plan

All to help you achieve your career goals!



**FIRST-YEAR SOAR**  
STUDENT ORIENTATION, ACADEMICS AND RESOURCES  
FLORIDA ATLANTIC UNIVERSITY • NEW STUDENT ORIENTATION

# Things To Do Before Classes Start ... To Be Career Ready



**FIRST-YEAR SOAR**  
STUDENT ORIENTATION, ACADEMICS AND RESOURCES  
FLORIDA ATLANTIC UNIVERSITY • NEW STUDENT ORIENTATION



**Major KnOWLedge** is an early exploration tool that helps FAU students identify personal interests and their relationships to career pathways.

Major KnOWLedge involves two steps:

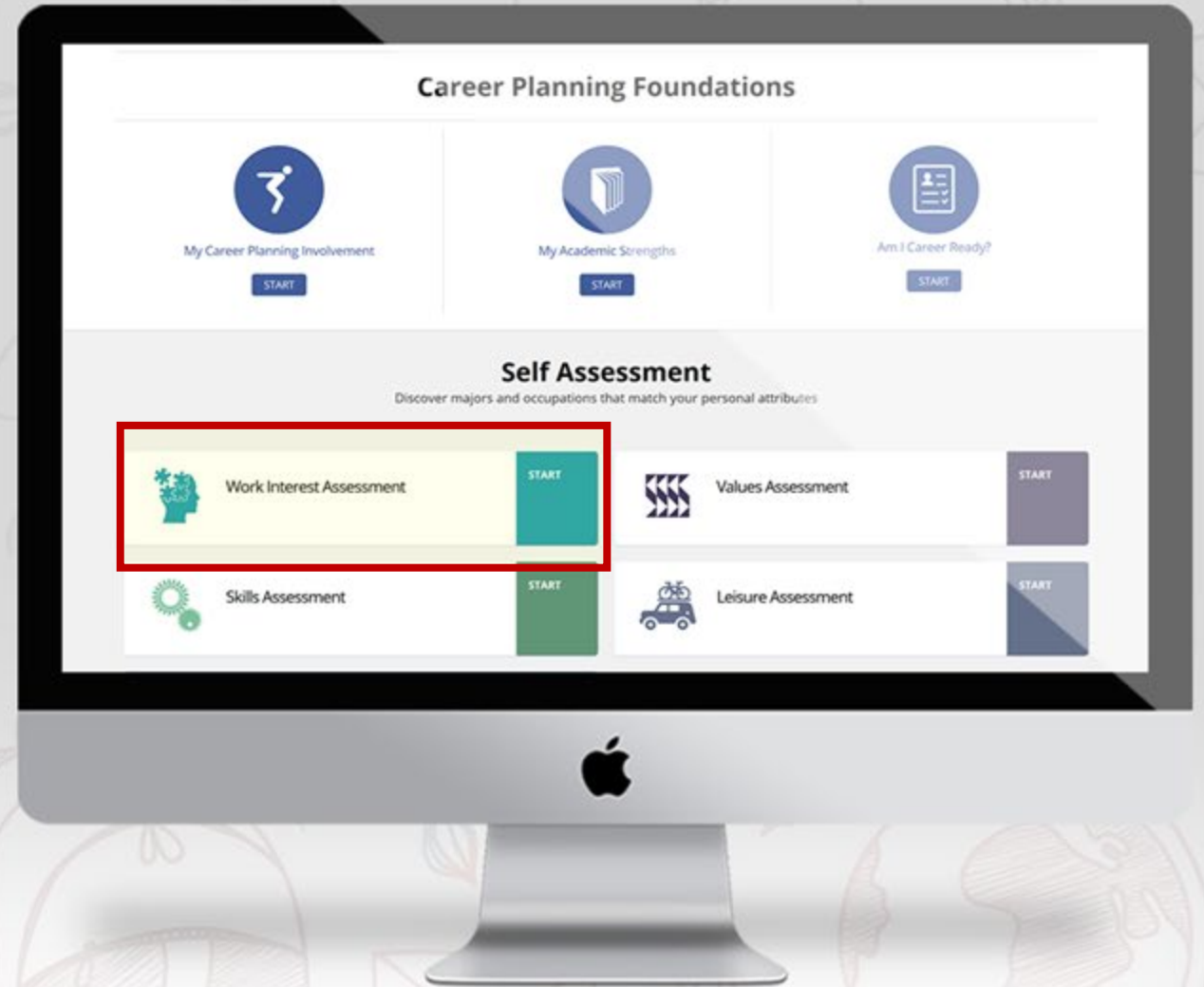


1. Complete a Work Interest Assessment.



2. Meet with the FAU Career Center to review your results.

Visit [fau.edu/career/majorknowledge/](https://fau.edu/career/majorknowledge/) to learn more.





## See how handshake can help build toward your future.



Search for full or part-time job opportunities



Find an internship on and off campus



Register for career events



Sign-up for interviews to meet employers



Schedule appointments for career services

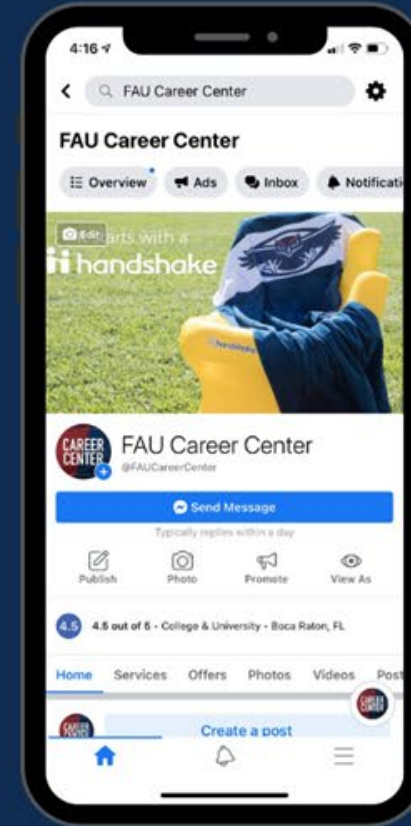
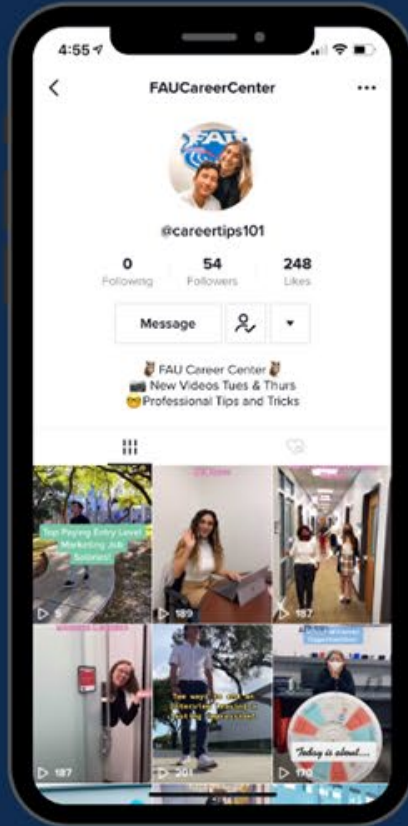
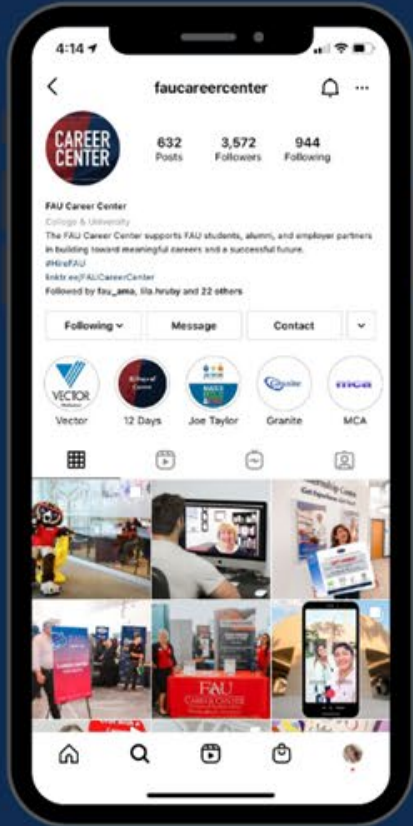
TO CLAIM YOUR ACCOUNT VISIT **FAU.JOINHANDSHAKE.COM**





# Let's Stay Connected!

Follow us on our socials



@FAUCareerCenter



@CareerTips101



@FAU Career Center



@FAUCareerCenter



FAU CAREER CENTER

career@fau.edu | 561-297-3533 | fau.edu/career



# Contact Information



**Ella Feliciano**  
**Career Coach for Science**  
**Majors**

*[etepper1@fau.edu](mailto:etepper1@fau.edu)*



**FIRST-YEAR SOAR**  
STUDENT ORIENTATION, ACADEMICS AND RESOURCES  
FLORIDA ATLANTIC UNIVERSITY • NEW STUDENT ORIENTATION



# #OwlInToGraduation

## University Advising Services (UAS)



**FIRST-YEAR SOAR**  
STUDENT ORIENTATION, ACADEMICS AND RESOURCES  
FLORIDA ATLANTIC UNIVERSITY • NEW STUDENT ORIENTATION

# READ

***Email*** is FAU's main form of communication.  
All emails will be sent to your FAU email.  
Please check your email **daily**!

Expect emails from your academic advisor for:

- ✓ Spring advising
- ✓ Midterm grades
- ✓ Important updates or information



**FIRST-YEAR SOAR**  
STUDENT ORIENTATION, ACADEMICS AND RESOURCES  
FLORIDA ATLANTIC UNIVERSITY • NEW STUDENT ORIENTATION



# READ

***Your syllabi*** will provide an outline for assignments, grading, exams, instructions, and instructor contact information.

- It is expected that you review your syllabi at the beginning and during the semester.
- Your syllabi can be found on Canvas.



**FIRST-YEAR SOAR**  
STUDENT ORIENTATION, ACADEMICS AND RESOURCES  
FLORIDA ATLANTIC UNIVERSITY • NEW STUDENT ORIENTATION

# READ

Please review your advisor's comments on **EZ Advising** form and all emails in your FAU email in box

- Do you still need to send important documents to FAU?
  - ☐ **AP / IB / AICE / Dual Enrollment / Transfer credits?**



**FIRST-YEAR SOAR**  
STUDENT ORIENTATION, ACADEMICS AND RESOURCES  
FLORIDA ATLANTIC UNIVERSITY • NEW STUDENT ORIENTATION

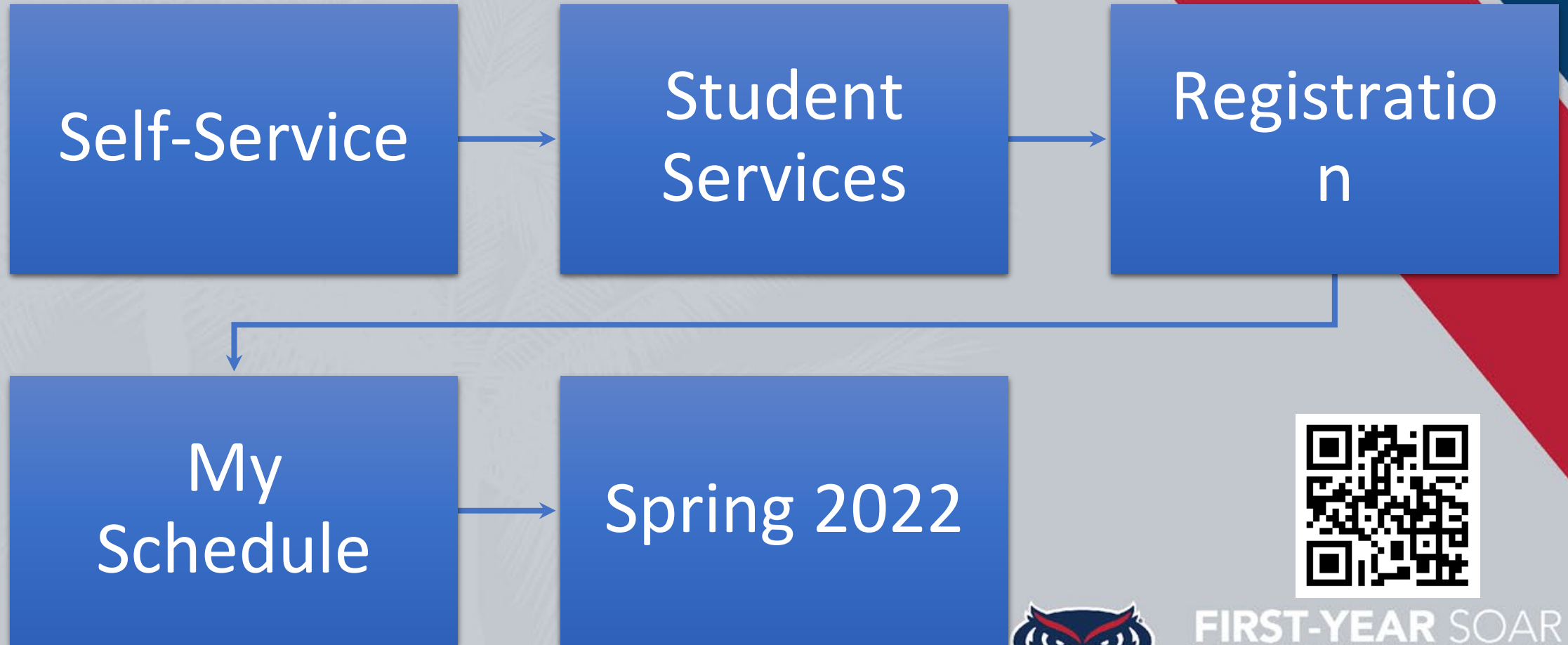


# KNOW What Is Happening & When



**FIRST-YEAR SOAR**  
STUDENT ORIENTATION, ACADEMICS AND RESOURCES  
FLORIDA ATLANTIC UNIVERSITY • NEW STUDENT ORIENTATION

# Find your schedule



**FIRST-YEAR SOAR**  
STUDENT ORIENTATION, ACADEMICS AND RESOURCES  
FLORIDA ATLANTIC UNIVERSITY • NEW STUDENT ORIENTATION



# IMPORTANT DATES

Class Begin	January 8 <sup>th</sup>
Last day to Drop/Add	January 14 <sup>th</sup>
Last day to Pay Tuition	January 18 <sup>th</sup>
Start to meet with your advisor	AFTER MLK DAY (January 17 <sup>th</sup> )
FAU Internship and Part-Time Job Fair	February 2022
Last day to Withdraw	March 25 <sup>th</sup>
Registration	<b>It's Happening! Get Registered NOW!</b>
Final Exams	April 28 <sup>th</sup> – May 4 <sup>th</sup>
Semester Ends	May 6 <sup>th</sup>

# Use Your Tools & Resources



**FIRST-YEAR SOAR**  
STUDENT ORIENTATION, ACADEMICS AND RESOURCES  
FLORIDA ATLANTIC UNIVERSITY • NEW STUDENT ORIENTATION



# Resources!

Virtual Registration  
Lab:  
Help with class  
days/times.

Solutions for your schedule



<https://tinyurl.com/282ejabf>

Email from your FAU  
account.

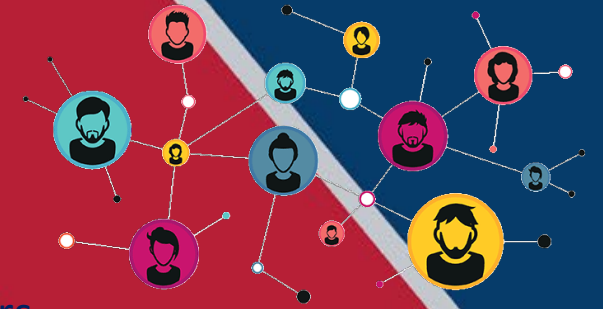
The advisor who processed  
your EZ Advising Form

[advisingservices@fau.edu](mailto:advisingservices@fau.edu)



**FIRST-YEAR SOAR**  
STUDENT ORIENTATION, ACADEMICS AND RESOURCES  
FLORIDA ATLANTIC UNIVERSITY • NEW STUDENT ORIENTATION

# Success Network



Your Success Network connects you to your support system- your academic advisor, professors, tutors, financial aid advisor, and many other support professionals

- **Click for a Success Network Tutorial**  
([http://www.fau.edu/uas/videos/video\\_library/Success\\_Network\\_Video.ocap.mp4](http://www.fau.edu/uas/videos/video_library/Success_Network_Video.ocap.mp4))
- The contact information for each assigned staff member can be found once you log into your Success Network
- You will log into Success Network to schedule appointments with your academic advisor at University Advising Services
- **UAS Walk-In Advising through your Success Network during the 1<sup>st</sup> week of class!**



**FIRST-YEAR SOAR**  
STUDENT ORIENTATION, ACADEMICS AND RESOURCES  
FLORIDA ATLANTIC UNIVERSITY • NEW STUDENT ORIENTATION



# Contact Information

## Email

UAS - [advisingservices@fau.edu](mailto:advisingservices@fau.edu)

Career Center – [career@fau.edu](mailto:career@fau.edu)

## Web

UAS - [www.fau.edu/uas](http://www.fau.edu/uas)

Science - [www.science.fau.edu](http://www.science.fau.edu)

Career Center – [www.fau.edu/career](http://www.fau.edu/career)

OURI – [www.ouri.fau.edu](http://www.ouri.fau.edu)



@UASFAU



@UASFAU



University Advising Services - FAU

## Phone

UAS - 561.297.3064

Science - 561.297.3700

Career Center - 561.297.3533

**Curriculum Sheets:** [www.fau.edu/uas/curriculum.php](http://www.fau.edu/uas/curriculum.php)



**FIRST-YEAR SOAR**  
STUDENT ORIENTATION, ACADEMICS AND RESOURCES  
FLORIDA ATLANTIC UNIVERSITY • NEW STUDENT ORIENTATION

# University Advising Services

**University Advising Services** will be your primary resource for academic advising, course scheduling, and guidance during your first and second year at FAU. UAS can assist with:

- Course advising
- Academic policies and information
- Changing and/or declaring majors
- Making appropriate referrals to important resources on campus



**FIRST-YEAR SOAR**  
STUDENT ORIENTATION, ACADEMICS AND RESOURCES  
FLORIDA ATLANTIC UNIVERSITY • NEW STUDENT ORIENTATION



# Intellectual Foundations Program (IFP)



**FIRST-YEAR SOAR**  
STUDENT ORIENTATION, ACADEMICS AND RESOURCES  
FLORIDA ATLANTIC UNIVERSITY • NEW STUDENT ORIENTATION

# What is the Intellectual Foundation Program (IFP)?

- ❖ Your core curriculum/basics
- ❖ All majors must complete the IFP
- ❖ There are six (6) segments of the IFP
- ❖ The requirements for each section varies depending on your major
- ❖ You will complete a minimum of six (6) credits in each segment (requirements vary by major)
- ❖ Segments with “A” and “B” sections have a requirement that one course must be taken in section “A”

Review the curriculum sheet for your major and speak with your academic advisor for specific major information:

<http://www.fau.edu/uas/curriculum.php>



**FIRST-YEAR SOAR**  
STUDENT ORIENTATION, ACADEMICS AND RESOURCES  
FLORIDA ATLANTIC UNIVERSITY • NEW STUDENT ORIENTATION



# Mathematics

6 credit hours Required – C or better\*\*  
At least one (1) course must be from Group A

## Group A

- \_\_\_\_\_ **MAC 1105** College Algebra
- \_\_\_\_\_ **STA 2023** Introduction to Statistics (only for Health Sciences and Geosciences majors)
- \_\_\_\_\_ **MAC 2311** Calculus with Analytic Geometry 1 (4 credits)  
*or any mathematics course for which one of the above courses is the direct prerequisite*

## Group B

- \_\_\_\_\_ **MAC 1147** Precalculus Algebra & Trigonometry (4 credits)
- \_\_\_\_\_ **MAC 2233** Methods of Calculus
- \_\_\_\_\_ **MAC 2241** Life Science Calculus 1 (4 credits)
- \_\_\_\_\_ **MAC 2312** Calculus with Analytic Geometry 2 (4 credits)

**\*\*FRESHMEN** -- Math courses will be determined by your SAT, ACT and high school math grades.

**\* The most universal Math class for science majors.**



**FIRST-YEAR SOAR**  
STUDENT ORIENTATION, ACADEMICS AND RESOURCES  
FLORIDA ATLANTIC UNIVERSITY • NEW STUDENT ORIENTATION

# Society and Human Behavior

6 credit hours required – At least one (1) course must be from Group A

## Group A

### History Department

\_\_\_\_ AMH 2020 & D United States History Since 1877 (P/F) – helps with state of Florida Civic Literacy Requirement

### Anthropology Department

\_\_\_\_ ANT 2000 & D Introduction to Anthropology (WAC)

### Economics Department

\_\_\_\_ ECO 2013 Macroeconomic Principles

### Political Science Department

\_\_\_\_ POS 2041 Government of the United States – helps with state of Florida Civic Literacy Requirement

### Psychology Department

\_\_\_\_ PSY 1012 General Psychology – recommended for all majors (Req'd. Neuro, Psych, Health Sciences)

### Sociology Department

\_\_\_\_ SYG 1000 Sociological Perspectives – recommended for all majors (Rec'd. Neuro, Psych, Health Sciences)

## IMPORTANT

- Writing Across the Curriculum (WAC) Must earn “C” or higher
- ENC 1101/1102 prerequisites with a minimum grade of “C” or higher



**FIRST-YEAR SOAR**  
STUDENT ORIENTATION, ACADEMICS AND RESOURCES  
FLORIDA ATLANTIC UNIVERSITY • NEW STUDENT ORIENTATION



# FAU Civic Literacy Requirement

To graduate from FAU with any degree, students entering this Spring must meet the Florida Civic Literacy statute by completing both a course and exam.

Courses	Civic Literacy Exam Requirement
AP, AICE, or IB U.S. Government or History credit	Requirements change based on credit type; consult with your Academic Advisor
50 or higher on American Gov. CLEP exam	Civic Literacy Requirement is met
Passing grade in POS 2041 (Government of the U.S.) or AMH 2020 (U.S. History since 1877)	Must take Exam and score 60 or higher: U.S. Citizenship and Immigration Services Naturalization Test or Florida Civic Literacy Examination (FCLE)

For more information Requirements and Exams, visit  
<https://www.fau.edu/ugstudies/civic-literacy-requirement/>



**FIRST-YEAR SOAR**  
STUDENT ORIENTATION, ACADEMICS AND RESOURCES  
FLORIDA ATLANTIC UNIVERSITY • NEW STUDENT ORIENTATION

# Policies to Know

**Gordon Rule:** Applies to both Writing Across the Curriculum (WAC) courses and Math classes.  
Must be completed for a “C” or higher to receive credit.

**Pass / Fail Option:** this option is not available for courses in the student’s major, students on probation, or for pre-health students.

Repeat Surcharge – 3x \*\*\*

**\*\*\* Limitation on Repeated Courses for Science Majors.**

**No course may be taken more than twice, whether at FAU or at any other institution, without the permission of the student’s advising office. Consult with an advisor to discuss options in the case that you cannot complete a course within 2 attempts.**



**FIRST-YEAR SOAR**  
STUDENT ORIENTATION, ACADEMICS AND RESOURCES  
FLORIDA ATLANTIC UNIVERSITY • NEW STUDENT ORIENTATION



# Withdrawal Policy (W Policy)

Undergraduate students may not withdraw (with a grade of “W” or “ZR”) from more than 2 courses at the lower-division level (1000- and 2000-level courses) and from more than 3 courses at the upper-division or higher level (3000- and 4000-level courses.)

**Always speak with your academic advisor before making any decision to withdraw from a course.**



**FIRST-YEAR SOAR**  
STUDENT ORIENTATION, ACADEMICS AND RESOURCES  
FLORIDA ATLANTIC UNIVERSITY • NEW STUDENT ORIENTATION

# Withdrawal Policy (W Policy)

**Current Undergraduate Program Withdrawal Counts : You may not drop course(s) more than the Limitations on Number of Withdrawals policy.**

Course Level	Withdrawal Limit	Current Total Withdrawals	Future Withdrawals Allowed
Lower-Division Level	2	0	2
Upper-Division Level	3	0	3



**FIRST-YEAR SOAR**  
STUDENT ORIENTATION, ACADEMICS AND RESOURCES  
FLORIDA ATLANTIC UNIVERSITY • NEW STUDENT ORIENTATION



# Writing Across the Curriculum (WAC)

**ALL students must complete four (4) WAC courses. Must earn a "C" or better.**

## WRITTEN COMMUNICATIONS

English Department

ENC 1101

ENC 1102 or allowable substitute: ENC 1939 or HIS 2050

## SOCIETY AND HUMAN BEHAVIOR

Anthropology Department

ANT 2000 & D

Introduction to Anthropology

## GLOBAL CITIZENSHIP

History Department

WOH 2012 & D

History of Civilization I

## HUMANITIES

Philosophy Department (Group A)

PHI 2010 & D

Introduction to Philosophy

English Department (Group B)

LIT 2010

Interpretation of Fiction

LIT 2030

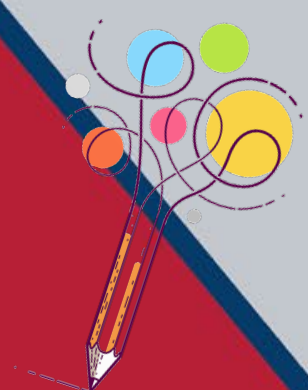
Interpretation of Poetry

LIT 2040

Interpretation of Drama

LIT 2070

Interpretation of Creative Non-Fiction



***\*Additional WAC courses may be available. Please speak with your advisor***



**FIRST-YEAR SOAR**  
STUDENT ORIENTATION, ACADEMICS AND RESOURCES  
FLORIDA ATLANTIC UNIVERSITY • NEW STUDENT ORIENTATION

# Foreign Language

- ARA 1120/1121 Beginning Arabic I/II
- CHI 1120/1121 Beginning Chinese I/II
- FRE 1120/1121 Beginning French I/II
- GER 1120/1121 Beginning German I/II
- HBR 1120/1121 Beginning Hebrew I/II
- ITA 1120/1121 Beginning Italian I/II
- JPN 1120/1121 Beginning Japanese I/II
- LAT 1120/1121 Beginning Latin I/II
- SPN 1120/1121 Beginning Spanish I/II

## IMPORTANT TO NOTE:

- **Foreign Language is a graduation requirement for ALL science majors.** This is different from your high school foreign language for college admission requirement.
- If you have taken 2 years of a language in high school, the Languages & Linguistics Department requires you to start with the 1121 level.
- All courses are 4 credits
- CLEP Option Available – speak with your advisor



**FIRST-YEAR SOAR**  
STUDENT ORIENTATION, ACADEMICS AND RESOURCES  
FLORIDA ATLANTIC UNIVERSITY • NEW STUDENT ORIENTATION



# Learning Outcomes

## You have ...

- ▶ Learned about the majors, minors, certificate available in the college.
- ▶ Learned more about what the college of science offers.
- ▶ Learned about the career center and its services.
- ▶ Understood the purpose of academic advising.
- ▶ Identified the FAU personnel in your Success Network
- ▶ Understood the IFP registration options for the College of Science



**FIRST-YEAR SOAR**  
STUDENT ORIENTATION, ACADEMICS AND RESOURCES  
FLORIDA ATLANTIC UNIVERSITY • NEW STUDENT ORIENTATION

The background is a solid red color. On the left side, there are faint, stylized palm trees in a lighter red shade. Scattered across the red background are numerous blue question marks of various sizes. A diagonal band of dark blue and light blue runs from the top right corner towards the bottom right.

# Questions



**FIRST-YEAR SOAR**  
STUDENT ORIENTATION, ACADEMICS AND RESOURCES  
FLORIDA ATLANTIC UNIVERSITY • NEW STUDENT ORIENTATION



# Your College Breakout Session is complete!

- Please head back to your small group Parliament breakout rooms. To get there, use the same link that you used to access your Parliament group earlier.
- Enjoy the rest of your day SOARing with us!



**FIRST-YEAR SOAR**  
STUDENT ORIENTATION, ACADEMICS AND RESOURCES  
FLORIDA ATLANTIC UNIVERSITY • NEW STUDENT ORIENTATION