



FIRST-YEAR SOAR

STUDENT ORIENTATION,
ACADEMICS AND RESOURCES

FLORIDA ATLANTIC UNIVERSITY



CAREER CENTER

APPOINTMENTS

In-person at the Boca Raton, Davie and
Jupiter campuses

Virtual and evening sessions available

DROP-IN CAREER COACHING

No appointment necessary

Monday - Friday Virtual 9 a.m. - 1 p.m.

In-person at the Boca Raton campus 1 - 5 p.m.

BUILD TOWARD YOUR FUTURE

MEET WITH A CAREER COACH FOR HELP WITH:



Deciding a major/career



Developing job and internship search strategies



Building résumés, cover letters,
and LinkedIn profiles



Connecting and networking with employers
through Handshake



Planning and applying for graduate and
professional school



Preparing and practicing for interviews



Getting professional headshots and attire

SCHEDULE AN APPOINTMENT TODAY AT [FAU.JOINHANDSHAKE.COM](https://fau.joinhandshake.com)

3

Things To Do Before Classes Start ...
To Be Career Ready



1. Complete the Career Readiness Module



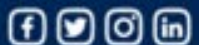
Scan here to enroll in
Kick Off Your Future

The Kick -Off Your Future Canvas training module is designed to provide new FAU students a great foundation to build toward your futures. Our goal is to connect students with high -quality career information to allow you to have success at FAU and beyond.



FAU CAREER CENTER

career@fau.edu | 561-297-3533 | fau.edu/career





The new interactive tool will allow users to explore data at the System level and by individual institution, including information on salary, graduate employment, student debt, and additional educational opportunities.



EARNINGS OVER TIME

Compare post-graduate earnings for each academic program at 1, 5, and 10 years after graduation



COMPARE EARNINGS

Compare low, median, and high wages of multiple programs simultaneously



BEYOND THE BACHELOR'S

Explore earnings potential over time of pursuing additional education beyond the bachelor's degree



EARNINGS BY MAJOR GROUP

View ranges for post-graduation earnings in a single display for quick comparison



TYPICAL LOAN AMOUNTS

Examine the proportion of students in the university system who graduate with student loan debt



LOANS OVER TIME

Explore the projected monthly student loan debt payments



In order to complete the module, there are 2 final steps:

1. Click the green button

2. Complete the 1 question survey



Thank you for taking the time to complete this training!

Click the button below to confirm that you have completed this module requirement.

Once you have completed this module, if you have a "CM" Hold, it will be removed within 24-48 hours.

[Click Here To Finish This Module →](#)



Career Readiness Module

✓ Logged in!

Affirmation

* I affirmatively indicate that I have been provided with information about: How to register with the FAU Career Center via Handshake. How to become career-ready through a module that includes career pathways for my chosen major. My FloridaFuture dashboard. Wage prospects for my declared major.

☐ I affirm

Finish



FIRST-YEAR SOAR
STUDENT ORIENTATION, ACADEMICS AND RESOURCES

2. Claim your Handshake Account

FAU CAREER CENTER



#HIREFAU

See how  handshake can help
build toward your future.



Search for full or part-time job opportunities



Find an internship on and off campus



Register for career events



Sign-up for interviews to meet employers



Schedule appointments for career services

TO CLAIM YOUR ACCOUNT VISIT **FAU.JOINHANDSHAKE.COM**



3. Get Experience!

FAU CAREER CENTER

YOUR INTERNSHIP *RESOURCE*

ON AND OFF CAMPUS
INTERNSHIPS AVAILABLE

REGISTER YOUR EXPERIENCE
THROUGH THE 0 - 4 CREDIT
PROFESSIONAL INTERNSHIP COURSE

START IN YOUR FIRST YEAR – IT'S NEVER TOO EARLY!



FLORIDA ATLANTIC UNIVERSITY

FALL 2022 CAREER FAIRS & NETWORKING EVENTS REGISTER NOW

September

8

Internship & Part-Time Job Fair

September

22

Government & Social Services

September

28

Career Expo In-Person

September

29

Virtual Career Expo

October

6

Accounting

October

20

Technology & Engineering

October

26

**Grad and Professional
School Virtual Showcase**

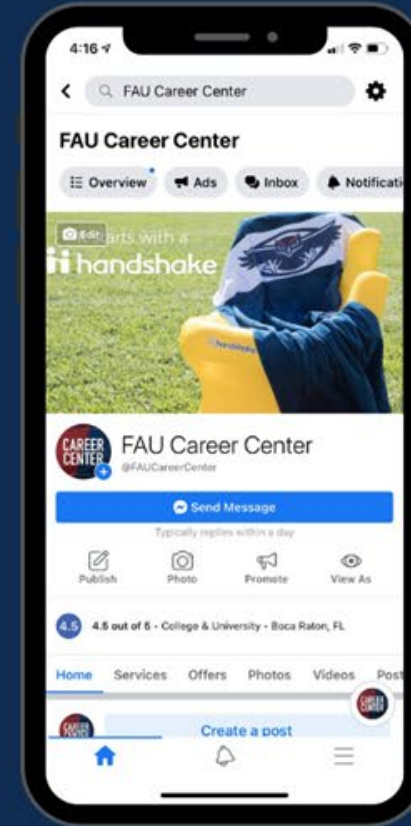
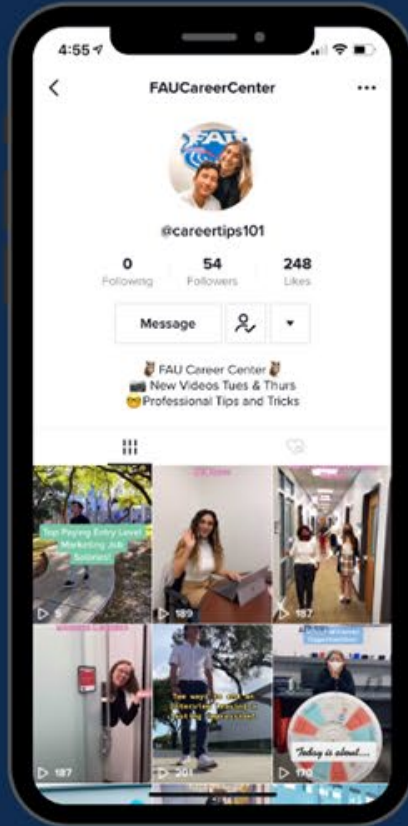
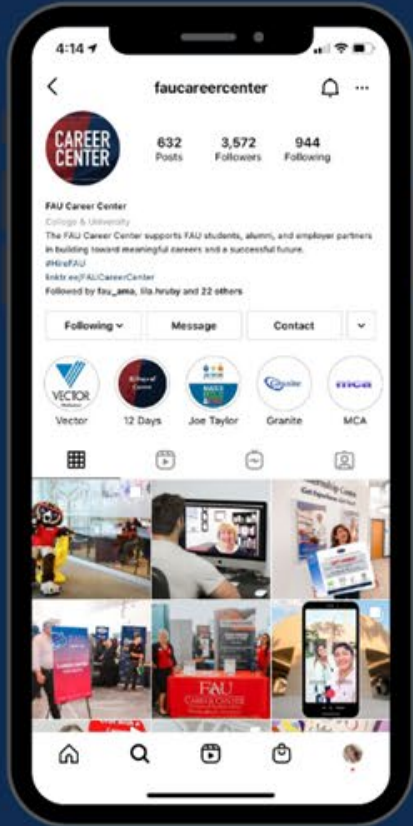
November

2

Diversity Showcase

Let's Stay Connected!

Follow us on our socials



@FAUCareerCenter



@CareerTips101



@FAU Career Center



@FAUCareerCenter



FIRST-YEAR **SOAR**

STUDENT ORIENTATION, ACADEMICS AND RESOURCES

University Advising Services



Location:

- Student Support Services (SU-80) Room 201

Contact Information:

- Phone: 561-297-3064
- Email: advisingservices@fau.edu



Advising Quick Tips

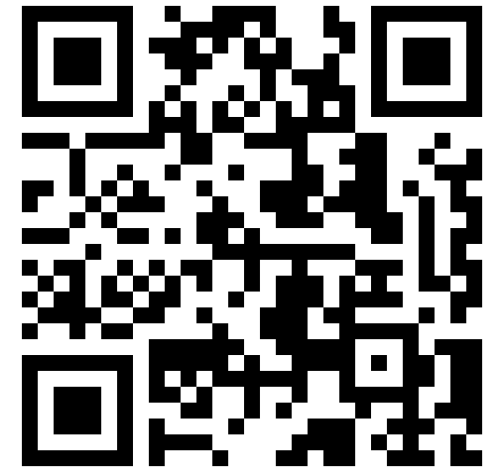
- FAU e-mail is the primary mode of communication
- Check your FAU e-mail daily (or at least twice a day)



Understanding your Intellectual Foundations Program (IFP)



Intellectual Foundation Program (IFP)



FLORIDA ATLANTIC UNIVERSITY – INTELLECTUAL FOUNDATION PROGRAM 2020 – 2021
All courses are three (3) credits unless otherwise indicated. Course selections should be made in consultation with an academic advisor.

Pre-Business (2021-2022)
The College of Business

FOUNDATIONS OF WRITTEN COMMUNICATION
(6 credit hours required – Writing Across the Curriculum - WAC)
Grade of "C" or higher is required in each course

____ ENC 1101.....College Writing I (REQUIRED)
____ ENC 1102.....College Writing II +

THE FOLLOWING COURSES BELOW MAY BE SUBSTITUTED FOR ENC 1102:

____ ENC 1939 +Special Topic: College Writing
____ HIS 2050 +Writing History

Note: Students must take four Writing-Across-the-Curriculum (WAC) courses, two of which must be taken from Foundations of Written Communication.

FOUNDATIONS OF MATHEMATICS & QUANTITATIVE REASONING
(6 credit hours required – Grade of "C" or higher is required)
Student must take 2 of the following courses, 1 must be from group A.
The second course may be from group A or group B.

Group A

____ MGF 1106Math for Liberal Arts 1
____ MGF 1107Math for Liberal Arts 2
____ MAC 1105College Algebra
____ STA 2023Introductory Statistics (REQUIRED)
____ MAC 2311Calculus with Analytic Geometry 1 (4 credits)
or any mathematics course for which one of the above courses is the direct prerequisite

Group B

____ COP 1034CComputer Programming & Data Literacy for Everyone (For Non-College Engineering & Computer Science majors)
____ MAC 1147Precalculus Algebra & Trigonometry (4 credits)
____ MAC 2210Intro Calculus w/Applications (4 credits) (Permit Only)
____ MAC 2233Methods of Calculus (REQUIRED)
***MAC 2233 is not required for Health Administration**
____ MAC 2241Life Science Calculus 1 (4 credits)
____ MAC 2312Calculus with Analytic Geometry 2 (4 credits)
____ PHI 2102.....Logic

FOUNDATIONS OF SCIENCE & THE NATURAL WORLD
(6 credit hours required - One of the courses must have a lab)
Student must take 2 of the following courses; 1 must be from group A.
The second course may be from group A or group B.

Group A

____ AST 2002Intro. to Astronomy (P/F)
____ BSC 1005 & LLife Science (3 cr. w/Lab)
____ CHM 1020CContemp. Chemical Issues
____ ESC 2000The Blue Planet (online)
____ EVR 1001Env. Sci. and Sustainability

Group B

____ ANT 2511 & LIntro to Biological Anthropology (4 cr. w/ Lab)
____ ETG 2831Nature: Inter. of Sci., Eng., & the Humanities
____ GLY 2010C & DPhysical Geol. (4 cr. w/Lab)
____ GLY 2100History of Earth and Life
____ IDS 2382Human Mission to Mars
____ MET 2010Weather, Climate and Climate Change
____ PSC 2121Physical Science

(D) = Discussion, (L) = Lab

Courses indicating a (D) or (L) are linked with a lecture, a lab, and/or a discussion. If you select one of these courses, you must register for the lecture, lab, and/or discussion. You **must** attend the lecture, lab, and/or discussion.

FOUNDATIONS IN GLOBAL CITIZENSHIP
(6 credit hours required)
Student must choose two (2) courses from among the following:

____ ANT 2410.....Culture and Society
____ EDF 2854Educated Citizen in Global Context
____ GEA 2000World Geography
____ INR 2002Introduction to World Politics
____ LAS 2000Intro to Caribbean & Latin American Studies
____ LIN 2607Global Perspectives on Language
____ SYP 2450Global Society
____ SOW 1005Global Perspectives of Social Services
____ WOH 2012 & DHistory of Civilization 1 (WAC) ++
____ WOH 2022History of Civilization 2
____ WST 2351Gender and Climate Change

FOUNDATIONS OF HUMANITIES
(6 credit hours required)
Student must take 2 of the following courses, 1 must be from group A.
The second course may be from group A or group B.

Group A

____ ARH 2000 Art Appreciation (P/F)
____ MUL 2010 Music Appreciation
____ PHI 2010 & D Introduction to Philosophy (WAC) ++
____ THE 2000 Theatre Appreciation

Group B

____ ARC 2208 Culture & Architecture
____ DAN 2100 Appreciation of Dance
____ FIL 2000 & D Film Appreciation
____ LIT 2100 Introduction to World Literature
____ LIT 2010 Interpretation of Fiction (WAC) ++
____ LIT 2030 Interpretation of Poetry (WAC) ++
____ LIT 2040 Interpretation of Drama (WAC) ++
____ LIT 2070 Interpretation of Creative Nonfiction (WAC) ++

WRITING ACROSS THE CURRICULUM (WAC)
Students must take four (4) WAC courses. Must earn a "C" or better.
Required: ENC1101 & ENC1102 or allowable substitute.
Recommend: One (1) WAC from the Global Citizenship Category or one (1) WAC from the Humanities Category. (see note below) **
Additional WAC courses may be available. Please speak with your advisor.

NOTE: Honors Seminars SHALL BE ACCEPTED AS MEETING THE WAC REQUIREMENT. See University Advising Services for details.

FOREIGN LANGUAGE – Only required for International Business and General Economics
(0 - 8 credits, 1 or more course in the same language) – Students with more than one year of a foreign language in high school should enroll in the second half of the beginners' foreign language class (ARA/CHI/FRE/GER/HBR/ITA/JPN/LAT/SPN 1121) or a higher level course. Proficiency for a first-level course can be earned by successfully completing a second-level course. For questions related to this requirement, consult an academic advisor. CLEP exam credits meet this requirement: see the catalog. **NOTE:** Native Speakers of a foreign language must consult the Languages, Linguistics, and Comparative Literature Department regarding this requirement.

Credit Summary

| | |
|-------------|--------------------------------------------------------------------------------------------|
| 36 Credits | Intellectual Foundations Program |
| 15 Credits | Free Electives |
| 9 Credits | Additional Major Requirements |
| | ____ ISM2000 & L Information Systems Fundamentals (CLEP or DSST option is available) |
| | ____ ACG2021 § Principles of Accounting I (Financial) |
| | ____ ACG2071 § Principles of Accounting II (Managerial) |
| 60 Credits | Upper-Division Coursework |
| 120 Credits | TOTAL |

NOTE: See the catalog for specific requirements, course descriptions, and additional information. The requirements for some core curriculum & other courses may be satisfied by passing the appropriate AP or CLEP exam – check with your advisor and college. Students who come with less than 60 credit hours must complete 9 credit hours of summer coursework either at FAU or another State University System Institution.

****NOTE:** GEB 3213 is required for business majors (except for General Economics) – counts as a Writing Across the Curriculum (WAC) course.

Available Business Majors

| | |
|-----------------------------------------------------------------|---------------------------------------------------------------------------------------------------------------|
| • Accounting | • International Business |
| • Economics (Option in Business Economics or General Economics) | • Management (Options in Leadership or Entrepreneurship) |
| • Finance | • Management Information Systems (Options in Information Technology, or Information and Knowledge Management) |
| • Health Administration | • Marketing (Options in General Marketing or Advertising) |
| • Hospitality Management | |

Legend

+ - ENC 1101 is a prerequisite.
++ - Two Foundations of Written Communications classes are required before taking this course.
§ - Sophomore standing (30 credits earned) is a requirement to take this course.
WAC - (WAC) Writing across the curriculum course



FIRST-YEAR SOAR
STUDENT ORIENTATION, ACADEMICS AND RESOURCES

Source: <https://www.fau.edu/uas/curriculum.php>

Intellectual Foundation Program (IFP) Requirements

- Written Communications
 - ENC1101 and ENC1102
- Mathematics & Quantitative Reasoning
 - Methods of Calculus - MAC2233
*(not required for Health Administration)
 - Introductory Statistics - STA2023

| FLORIDA ATLANTIC UNIVERSITY – INTELLECTUAL FOUNDATION PROGRAM 2020 – 2021 <i>All courses are three (3) credits unless otherwise indicated. Course selections should be made in consultation with an academic advisor.</i> | |
|-----------------------------------------------------------------------------------------------------------------------------------------------------------------------------------------------------------------------------------------------------------------------------------------------------------------------------------------------------------------------------------------------------------------------------------------------------------------------------------------------------------------------------------------------------------------------------------------------------------------------|-----------------------------------------------------------------------------------------------------------------------------------------------------------------------------------------------------------------------------------------------------------------------------------------------------------------------------------------------------------------------------------------------------------------------------------------------------------------------------------------------------------------------------------------------------------------------------------------------------------------------------------------------------------------------------------------------------------------------------------------------------------------------------------------------------------------------------------------------------------------------------------------------------------------------------------------------------------------------------------------------------------------------------------------------------------------------------------------------------------------------------------------------------------------------------------------------------------------------------------------------------------------------------|
| Pre-Business (2021-2022) The College of Business | |
| FOUNDATIONS OF WRITTEN COMMUNICATION (6 credit hours required – Writing Across the Curriculum - WAC) Grade of "C" or higher is required in each course ____ ENC 1101.....College Writing I (REQUIRED) ____ ENC 1102.....College Writing II + THE FOLLOWING COURSES BELOW MAY BE SUBSTITUTED FOR ENC 1102: ____ ENC 1939 +.....Special Topic: College Writing ____ HIS 2050 +.....Writing History Note: Students must take four Writing-Across-the-Curriculum (WAC) courses, two of which must be taken from Foundations of Written Communication. | FOUNDATIONS OF MATHEMATICS & QUANTITATIVE REASONING (6 credit hours required – Grade of "C" or higher is required) Student must take 2 of the following courses, 1 must be from group A. The second course may be from group A or group B. Group A ____ MGF 1106Math for Liberal Arts 1 ____ MGF 1107Math for Liberal Arts 2 ____ MAC 1105College Algebra ____ STA 2023Introductory Statistics (REQUIRED) ____ MAC 2311Calculus with Analytic Geometry 1 (4 credits) or any mathematics course for which one of the above courses is the direct prerequisite Group B ____ COP 1034CComputer Programming & Data Literacy for Everyone (For Non-College Engineering & Computer Science majors) ____ MAC 1147Precalculus Algebra & Trigonometry (4 credits) ____ MAC 2210Intro Calculus w/Applications (4 credits) (Permit Only) ____ MAC 2233Methods of Calculus (REQUIRED) *MAC 2233 is not required for Health Administration ____ MAC 2241Life Science Calculus 1 (4 credits) ____ MAC 2312Calculus with Analytic Geometry 2 (4 credits) ____ PHI 2102.....Logic |
| FOUNDATIONS OF SCIENCE & THE NATURAL WORLD (6 credit hours required - One of the courses must have a lab) Student must take 2 of the following courses; 1 must be from group A. | |



Intellectual Foundation Program (IFP) Requirements

- Science and the Natural World
 - 6 credit hours
 - At least one course from Group A
 - One must have a lab
- Society and Human Behavior
 - Macroeconomics - ECO2013
*(not required for Health Administration)
 - Microeconomics – ECO2023

| FOUNDATIONS OF SCIENCE & THE NATURAL WORLD (6 credit hours required - One of the courses must have a lab) Student must take 2 of the following courses; 1 must be from group A The second course may be from group A or group B | |
|---------------------------------------------------------------------------------------------------------------------------------------------------------------------------------------------------------------------------------------------------|-------------------------------------------------|
| Group A | |
| ___ AST 2002 | Intro. to Astronomy (P/F) |
| ___ BSC 1005 & L | Life Science (3 cr. w/Lab) |
| ___ CHM 1020C | Contemp. Chemical Issues |
| ___ ESC 2000 | The Blue Planet (online) |
| ___ EVR 1001 | Env. Sci. and Sustainability |
| Group B | |
| ___ ANT 2511 & L | Intro to Biological Anthropology (4 cr. w/ Lab) |
| ___ ETG 2831 | Nature: Inter. of Sci., Eng., & the Humanities |
| ___ GLY 2010C & D | Physical Geol. (4 cr. w/Lab) |
| ___ GLY 2100 | History of Earth and Life |
| ___ IDS 2382 | Human Mission to Mars |
| ___ MET 2010 | Weather, Climate and Climate Change |
| ___ PSC 2121 | Physical Science |
| (D) = Discussion, (L) = Lab | |
| Courses indicating a (D) or (L) are linked with a lecture, a lab, and/or a discussion. If you select one of these courses, you must register for the lecture, lab, and/or discussion. You must attend the lecture, lab, and/or discussion. | |

| FOUNDATIONS OF SOCIETY & HUMAN BEHAVIOR (6 credit hours required) Student must take 2 of the following courses, 1 must be from group A. The second course may be from group A or group B. | |
|----------------------------------------------------------------------------------------------------------------------------------------------------------------------------------------------------|---------------------------------------------------------------------------------------------------------|
| Group A | |
| ___ AMH 2020 & D | United States History Since 1877 (P/F) |
| ___ ANT 2000 & D | Introduction to Anthropology (WAC) |
| ___ ECO 2013 | Macroeconomic Principles § (REQUIRED) *ECO is not required for Health Administration |
| ___ POS 2041 | Government of the United States |
| ___ PSY 1012 | Introduction to Psychology |
| ___ SYG 1000 | Sociological Perspectives |
| Group B | |
| ___ AMH 2010 & D | United States History to 1877 (P/F) |
| ___ DIG 2202 | Digital Culture |
| ___ ECO 2023 | Microeconomic Principles § (REQUIRED) |
| ___ ECP 2002 | Contemporary Economic Issues |
| ___ EEX 2091 | Disability and Society |
| ___ EVR 1110 | Climate Change: The Human Dimensions |
| ___ EVR 2017 | Environment and Society |
| ___ LIN 2001 | Introduction to Language (online course) |
| ___ PAD 2258 | Changing Environment of Soc., Bus., & Gov't |
| ___ SYG 2010 | Social Problems |
| ___ URP 2051 | Designing the City |



Intellectual Foundation Program (IFP) Requirements

- Global Citizenship
 - 6 credit hours; two courses
- Humanities
 - 6 credit hours; two courses; 1 course from Group A

| FOUNDATIONS IN GLOBAL CITIZENSHIP (6 credit hours required) | |
|----------------------------------------------------------------|---------------------------------------------|
| Student must choose two (2) courses from among the following: | |
| ___ ANT 2410..... | Culture and Society |
| ___ EDF 2854..... | Educated Citizen in Global Context |
| ___ GEA 2000..... | World Geography |
| ___ INR 2002..... | Introduction to World Politics |
| ___ LAS 2000..... | Intro to Caribbean & Latin American Studies |
| ___ LIN 2607..... | Global Perspectives on Language |
| ___ SYP 2450..... | Global Society |
| ___ SOW 1005..... | Global Perspectives of Social Services |
| ___ WOH 2012 & D..... | History of Civilization 1 (WAC) ++ |
| ___ WOH 2022..... | History of Civilization 2 |
| ___ WST 2351..... | Gender and Climate Change |

| WRITING ACROSS THE CURRICULUM (WAC) | |
|-------------------------------------------------------------------------------------------------------------------------------------|--|
| Students must take four (4) WAC courses. Must earn a "C" or better. | |
| Required: ENC1101 & ENC1102 or allowable substitute. | |
| Recommend: One (1) WAC from the Global Citizenship Category or one (1) WAC from the Humanities Category. (see note below) ** | |
| Additional WAC courses may be available. Please speak with your advisor. | |

| FOUNDATIONS OF HUMANITIES (6 credit hours required) | |
|-------------------------------------------------------------------------------------------------------------------------|------------------------------------------------|
| Student must take 2 of the following courses, 1 must be from group A. The second course may be from group A or group B. | |
| Group A | |
| ___ ARH 2000..... | Art Appreciation (P/F) |
| ___ MUL 2010..... | Music Appreciation |
| ___ PHI 2010 & D..... | Introduction to Philosophy (WAC) ++ |
| ___ THE 2000..... | Theatre Appreciation |
| Group B | |
| ___ ARC 2208..... | Culture & Architecture |
| ___ DAN 2100..... | Appreciation of Dance |
| ___ FIL 2000 & D..... | Film Appreciation |
| ___ LIT 2100..... | Introduction to World Literature |
| ___ LIT 2010..... | Interpretation of Fiction (WAC) ++ |
| ___ LIT 2030..... | Interpretation of Poetry (WAC) ++ |
| ___ LIT 2040..... | Interpretation of Drama (WAC) ++ |
| ___ LIT 2070..... | Interpretation of Creative Nonfiction (WAC) ++ |



Writing Across the Curriculum (WAC/GRW)

Students must take four (4) WAC/GRW courses. Must earn a "C" or better

WRITTEN COMMUNICATION

English Department

- ENC1101
- ENC1102 or allowable substitute: ANT1471, ENC1939, HIS2934 or NSP1195

SOCIETY & HUMAN BEHAVIOR

Anthropology Department

- ANT2000&D – Introduction to Anthropology (WAC/GRW)

GLOBAL CITIZENSHIP

History Department

- WOH 2012 &D – History of Civilization I (WAC/GRW)

HUMANITIES

Philosophy Department (Group A)

- PHI 2010 & D– Introduction to Philosophy (WAC/GRW)

English Department (Group B)

- LIT 2010 Interpretation of Fiction (WAC/GRW)
- LIT 2030 Interpretation of Poetry (WAC/GRW)
- LIT 2040 Interpretation of Drama (WAC/GRW)
- LIT 2070 Interpretation of Creative Non-Fiction (WAC/GRW)

FOUNDATIONS IN GLOBAL CITIZENSHIP

(6 credit hours required)

Student must choose two (2) courses from among the following:

- ___ ANT 2410.....Culture and Society
- ___ EDF 2854Educated Citizen in Global Context
- ___ GEA 2000.....World Geography
- ___ INR 2002.....Introduction to World Politics
- ___ LAS 2000.....Intro to Caribbean & Latin American Studies
- ___ LIN 2607Global Perspectives on Language
- ___ SYP 2450.....Global Society
- ___ SOW 1995Global Perspectives of Social Services
- ___ WOH 2012 & D.....History of Civilization 1 (WAC) ++
- ___ WOH 2022.....History of Civilization 2
- ___ WST 2351Gender and Climate Change

WRITING ACROSS THE CURRICULUM (WAC)

Students must take four (4) WAC courses. Must earn a "C" or better.

Required: ENC1101 & ENC1102 or allowable substitute.

Recommend: One (1) WAC from the Global Citizenship Category or one (1) WAC from the Humanities Category. (see note below) **

Additional WAC courses may be available. Please speak with your advisor.

FOUNDATIONS OF HUMANITIES

(6 credit hours required)

Student must take 2 of the following courses, 1 must be from group A. The second course may be from group A or group B.

Group A

- ___ ARH 2000 Art Appreciation (P/F)
- ___ MUS 2010..... Music Appreciation
- ___ PHI 2010 & D Introduction to Philosophy (WAC) ++
- ___ THE 2000 Theatre Appreciation

Group B

- ___ ARC 2208..... Culture & Architecture
- ___ DAN 2100 Appreciation of Dance
- ___ FIL 2000 & D Film Appreciation
- ___ LIT 2000..... Introduction to World Literature
- ___ LIT 2010..... Interpretation of Fiction (WAC) ++
- ___ LIT 2030..... Interpretation of Poetry (WAC) ++
- ___ LIT 2040..... Interpretation of Drama (WAC) ++
- ___ LIT 2070..... Interpretation of Creative Nonfiction (WAC) ++



FIRST-YEAR SOAR

STUDENT ORIENTATION, ACADEMICS AND RESOURCES

FAU Civic Literacy Requirement

To graduate from FAU with any degree, students must meet the Florida Civic Literacy statute by completing **both a course and exam**.

| Civic Literacy Course Requirement | Civic Literacy Exam Requirement |
|------------------------------------------------------------------------------------------------|------------------------------------------------------------------------------------------------------------------------------------------------------------|
| AP, AICE, or IB U.S. Government or History credit | Requirements change based on credit type; consult with your Academic Advisor |
| 50 or higher on American Gov. CLEP exam | Civic Literacy Requirement is met |
| Passing grade in POS 2041 (Government of the U.S.) or AMH 2020 (U.S. History since 1877) | Must take Exam and score 60 or higher: U.S. Citizenship and Immigration Services Naturalization Test or Florida Civic Literacy Examination (FCLE) |



First-Year Interest Groups (FIGS)

SLS 1411

Meet and learn with peers who share the same major and/or interests!

- 1-credit course
- 25 students in class
- Led by faculty and advisors from your college
- Build relationships and community
- Find out what it takes to excel in your major

Learn more at fau.edu/access/isucceed/figs/

FIGS @ FAU

First-Year Interest Groups

Meet FAU faculty and staff, make friends, and connect with the college of your major from your 1st day on campus.

Arts & Letters

Education

Business

Engineering & Computer Science

Science

Social Work & Criminal Justice

Learn more about FIGs at
fau.edu/access/isucceed/figs

Do you want to become university and career ready? Join a FIG!
Enroll in a 1-credit FIG course led by faculty and staff from your college.
Get the inside scoop on what it takes to excel in your major!



FIRST-YEAR SOAR
STUDENT ORIENTATION, ACADEMICS AND RESOURCES

Resources



FIRST-YEAR **SOAR**
STUDENT ORIENTATION, ACADEMICS AND RESOURCES

On Campus Resources for Academic Success

Center for Learning And Student Success (CLASS):

The Center for Learning And Student Success (CLASS) provides a variety of programs to help students engage, achieve and excel at FAU and prepare for a future of lifelong learning.

Supplemental Instruction (SI) - is a series of FREE weekly peer-facilitated study sessions for students taking historically difficult courses.

Learning Assistant (LA) - LAs are undergraduate students who facilitate discussions among groups of students in a variety of classroom settings that encourage active engagement. Currently in General Chemistry II and Calculus I and II.

Tutoring - Small group tutoring is available for a variety of undergraduate courses. Most of our FREE peer-led tutoring sessions are appointment-based and take place in the Center for Teaching And Learning.

eTutoring - In collaboration with the Center for eLearning, CLASS offers FREE eTutoring for students enrolled in some of FAU's most difficult online courses.

eSuccess - To foster online student success, our eSuccess services are designed to address the needs of both novice and seasoned online learners.

Civic Literacy Workshops - A series of FREE workshops to help students prepare to take the Civic Literacy exam to meet a graduation requirement.



Important Dates – Fall 2022

| | |
|-----------------------------------------------------------|-------------------------------------------------------|
| Classes Begin | Saturday, August 20 |
| Last day to Drop/Add Courses | Friday, August 26 |
| Last day to Pay Tuition | Monday, August 29 |
| Make your advising appointment via Success Network | Labor Day (Monday, September 5) |
| Last day to Withdraw from a Course | Friday, October 28 |
| Advance Registration for Spring 2023 | Monday, October 31 (DO NOT WAIT FOR THIS DATE) |
| Final Exams | Thursday, December 8 – Wednesday, December 14 |
| Semester Ends | Friday, December 16 |



FIRST-YEAR **SOAR**

<http://STUDENT-ORIENTATION.ACADEMICS.AND-RESOURCES/ration/calendar.php>

Questions



FIRST-YEAR **SOAR**
STUDENT ORIENTATION, ACADEMICS AND RESOURCES

College of Business Advising



FIRST-YEAR **SOAR**
STUDENT ORIENTATION, ACADEMICS AND RESOURCES



📍 **Boca Raton Campus** – Palm Beach County

Fleming West Bldg, Room #102

📞 561-297-3688

📍 **Davie Campus** – Broward County

Liberal Arts Bldg, Room #444

📞 954-236-1290



FIRST-YEAR SOAR
STUDENT ORIENTATION, ACADEMICS AND RESOURCES



cobadvising@fau.edu

COB Academic Advising

| Advising Appointments | Virtual Walk-in Advising |
|-------------------------------------------------------------------------------------------------------------------------------------------|-------------------------------------------------------|
| Available Mondays, Tuesday, Wednesdays, and Fridays from 7:30 am to 6:30 pm | Available Thursdays beginning at 7:30 am |
| Meeting with your chosen advisor | Meeting with first available advisor as space permits |
| Via phone or Webex (Updates to follow) | The advisor will call the student |
| Up to 30 minutes | Limited to 15 minutes |
| Review course options, evaluate your choice of major and/or minor, estimate your graduation date, discuss any academic issues or concerns | Course options for the immediate upcoming semester |
| Scheduled via www.fau.edu/successnetwork | As space remains |



DEGREES

BBA

Accounting
Economics
Finance
Hospitality

International Business
Management: LAMS or ENT
Management Information Systems
Marketing

BS

General Economics

BHS

Health Administration

MAJORS



FIRST-YEAR **SOAR**
STUDENT ORIENTATION, ACADEMICS AND RESOURCES



cobadvising@fau.edu

Pre-Business Foundation Courses (Minimum Grade "C")

A MAXIMUM OF 2 ATTEMPTS (including "W") are allowed in any pre-business course.

| Course | Title | Prerequisites and Notes |
|------------|----------------------------|------------------------------------------|
| ENC110 1 | College Writing I | |
| ENC110 2 | College Writing II | Pre: ENC110 1 |
| ECO20 13 * | Macroeconomics I | |
| ECO20 14 * | Macroeconomics II | |
| ACG 2021 | ACG 2021 | |
| MAC 2233 | MAC 2233 | CG20 11 |
| ACG 2021 | ACG 2021 | |
| ISM2000 | Info. Systems Fundamentals | May be equivalent to CGS course |
| STA2023 | Statistics | Pre: MAC110 5, MGF110 6 or MPF1 Score 10 |
| MAC2233 * | Methods of Calculus | MAC110 5 or MPF2 Score 40 |

*Not required for Health Administration majors



Requirements to Declare a College of Business Major

All: 60 credit hours earned and the Foreign Language Admissions Requirement (FLENT)

| Program | Courses Completed with grade “C” or better | GPA |
|-----------------------|--------------------------------------------|-----------------------------|
| Business Core Majors | All 9 Pre-Business Foundation Courses | 2.5 <u>Pre-Business</u> GPA |
| Health Administration | ACG2021, ACG2071, ISM2000, STA2023 | 2.25 FAU GPA |
| General Economics | ECO2013, ECO2023, MAC2233 | 2.0 FAU GPA |



Foreign Language Requirements

FLENT— All students

- Minimum two high school years of the same foreign language with passing grades

FLEX— General Economics and International Business majors ONLY

- Minimum two college semesters of the same foreign language with passing grades

Other Proof of Foreign Language Proficiency (for FLENT or FLEX)

- Contact Department of Languages and Linguistics
 - 561-297-3860
 - Culture and Society Building, CU #232



Enrich Your College Experience

American Marketing Association (AMA)

Accounting student organization (ASA)

Accounting Scholars (ASP)

Economics club

Management Info Systems Association (MISA)

Investors Association (TIA)

Business Fraternities

FAU Ambassadors

Orientation Leaders

Student Government

Internships

Education Abroad



FIRST-YEAR **SOAR**
STUDENT ORIENTATION, ACADEMICS AND RESOURCES



cobadvising@fau.edu

Education Abroad

Business majors generally study abroad in junior or senior year.

Visit the Office of Education Abroad

www.fau.edu/goabroad

Explore a new country and culture

Earn academic credit

Options:

Faculty- Led Programs- Field Experience
Exchange Programs - Semester abroad/Full year abroad
Direct enroll



FIRST-YEAR **SOAR**
STUDENT ORIENTATION, ACADEMICS AND RESOURCES



cobadvising@fau.edu

- Academic Schedules
- Admissions
- Business Communications
- Current Undergraduate Students
- Academic Policies
- Education Abroad
- Mini-Term Courses
- FAU Resource Index
- Graduation
- International Partnerships
- Internships and Career Advising
- Registration & Enrollment
- Meet the Advisors
- Newly admitted College of Business Students
- Scholarships
- Student Organizations
- Soar-in-4 Scholars Program
- Majors
- Minors & Certificates
- Transfer Students

CURRENT UNDERGRADUATE STUDENTS

Welcome to Student Academic Services (Advising)

Important

- Book
- Book
- ap

How

We are he

Sign i

Addition

Office Lo

Contacti

Virtual

Click the

--The virtual kiosk will be back on

When signing in, your phone

Virtual Walk-in Guidelines:

- Sign-in begins each Thursday
- Please DO NOT sign in again if your name disappears from the list.

ACADEMIC POLICIES

All College of Business policies are outlined in the following policies.

- Limitation on
- Limitation on
- Two Semester
- Academic Ho
- Academic Pe
- Administrative
- College of B
- Email Corres
- Academic Int
- Student Griev

| Major | Program Sheet by Major | Webpage for Major | Webpage for Online BBA Major |
|----------------------------------------------|----------------------------------------|---------------------------------|-----------------------------------------|
| Accounting | Download Program Sheet | On-Campus Major | Online BBA (OBBA) Major |
| Data Science and Analytics | Download Program Sheet | On-Campus Major | |
| Economics - Business | Download Program Sheet | On-Campus Major | Online BBA (OBBA) Major |
| Economics - General | Download Program Sheet | On-Campus Major | |
| Finance | Download Program Sheet | On-Campus Major | Online BBA (OBBA) Major |
| Health Administration | Download Program Sheet | On-Campus Major | |
| Hospitality & Tourism Management | Download Program Sheet | On-Campus Major | Online BBA (OBBA) Major |
| International Business | Download Program Sheet | On-Campus Major | |
| Management (Leadership or Entrepreneurship) | Download Program Sheet | On-Campus Major | Online BBA (OBBA) Major |
| Management Information Systems | Download Program Sheet | On-Campus Major | |
| Marketing (General Marketing or Advertising) | Download Program Sheet | On-Campus Major | Online BBA (OBBA) Major |

OB advising office in appointments. We

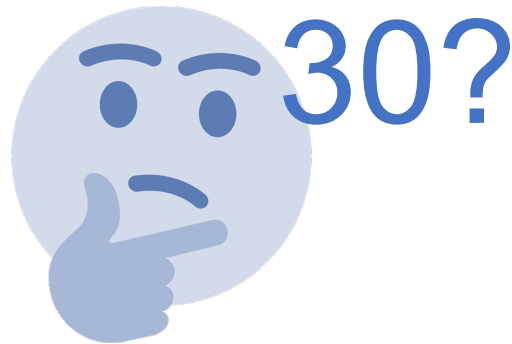
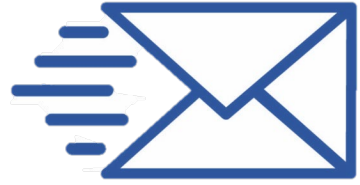


FIRST-YEAR SOAR

STUDENT ORIENTATION, ACADEMICS AND RESOURCES

Tips for Success

C vs C-

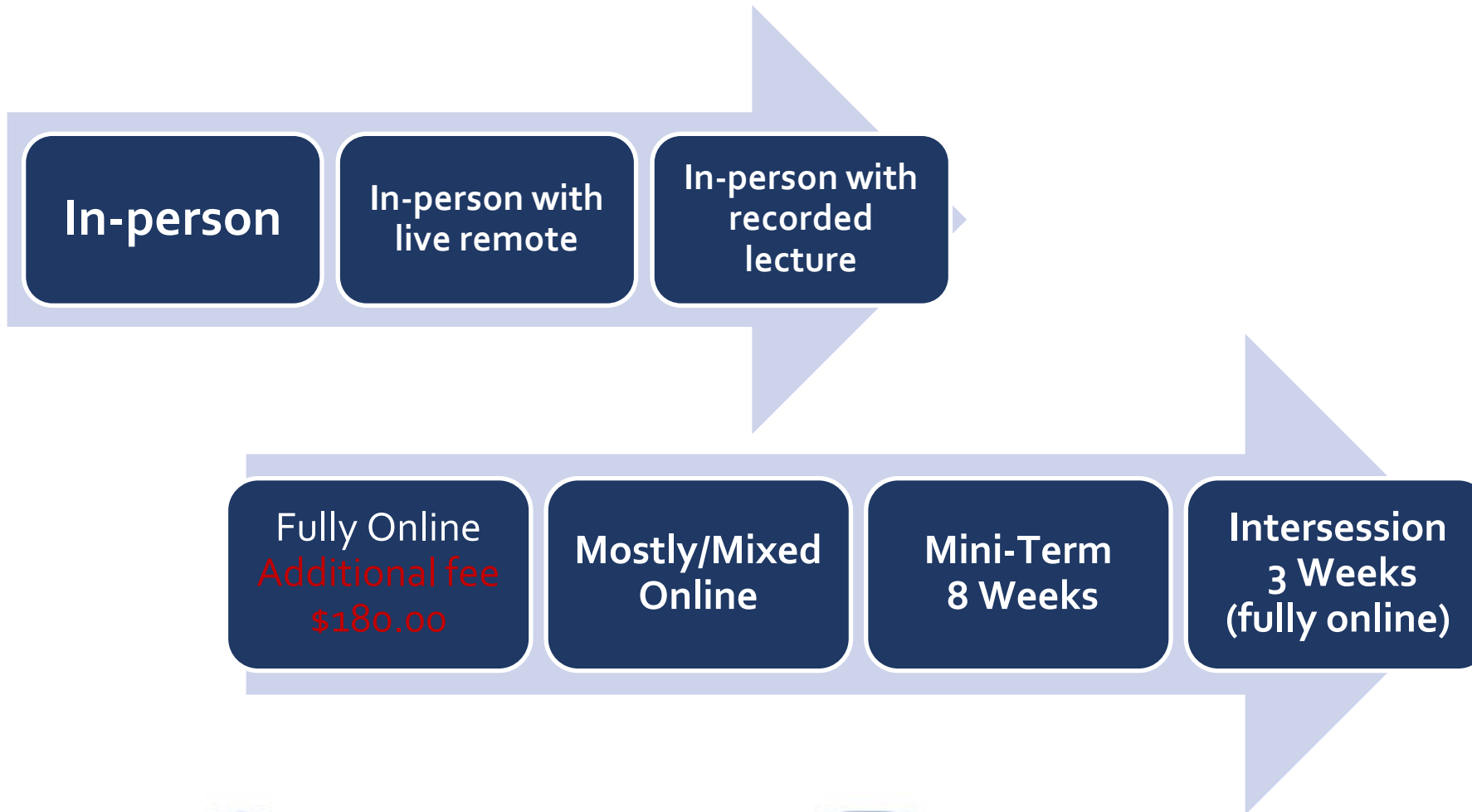


FIRST-YEAR **SOAR**
STUDENT ORIENTATION, ACADEMICS AND RESOURCES



cobadvising@fau.edu

Instructional Methods



Wrap up

Accounting Majors

- Must complete the accounting competency exam to declare major
- **Max of 3 attempts allowed**
- Passing score is 21/30 (70%)

Prebusiness requirements across majors

- Foreign Language
- 60 credits earned or in-progress
- “C” or better in all pre-business courses
- GPA requirement applicable to desired major

General Info

- Two attempt policy (a.k.a limitation on repeated course policy)
- **All “C” grades will not equate to a 2.5 PBUS GPA**
- Meet with an advisor every semester.

Visit our website to find out more about clubs and organizations, scholarship, internship, and more!



www.business.fau.edu/advising
FIRST-YEAR SOAR
STUDENT ORIENTATION, ACADEMICS AND RESOURCES



cobadvising@fau.edu

Questions?



FIRST-YEAR **SOAR**
STUDENT ORIENTATION, ACADEMICS AND RESOURCES

Contact Information

Email

- University Advising Services – advisingservices@fau.edu
- College of Business – cobadvising@fau.edu
- Career Center - career@fau.edu

Web

- University Advising Services – www.fau.edu/uas
- College of Business – www.business.fau.edu/undergraduate
- Career Center - www.fau.edu/career

Phone

- UAS - 561-297-3064
- College of Business – 561-297-3688
- Career Center - 561-297-3533

Curriculum Sheets: www.fau.edu/uas



Your College Breakout Session is complete!

Please head back to your small group Parliament breakout rooms. To get there, use the same link that you used to access your Parliament group earlier.

Enjoy the rest of your day SOAR-ing with us!

