



Florida Atlantic University  
Christine E. Lynn College of Nursing

***Connecting the Theory of Bureaucratic  
Caring to Precision Health***

Katherine Chadwell, DNP, MBMSc, APRN, GNP-BC, CPHQ, PhD student



The Christine E. Lynn College of Nursing is dedicated to caring; advancing the science, studying the meaning, practicing the art, and living caring day-to-day.

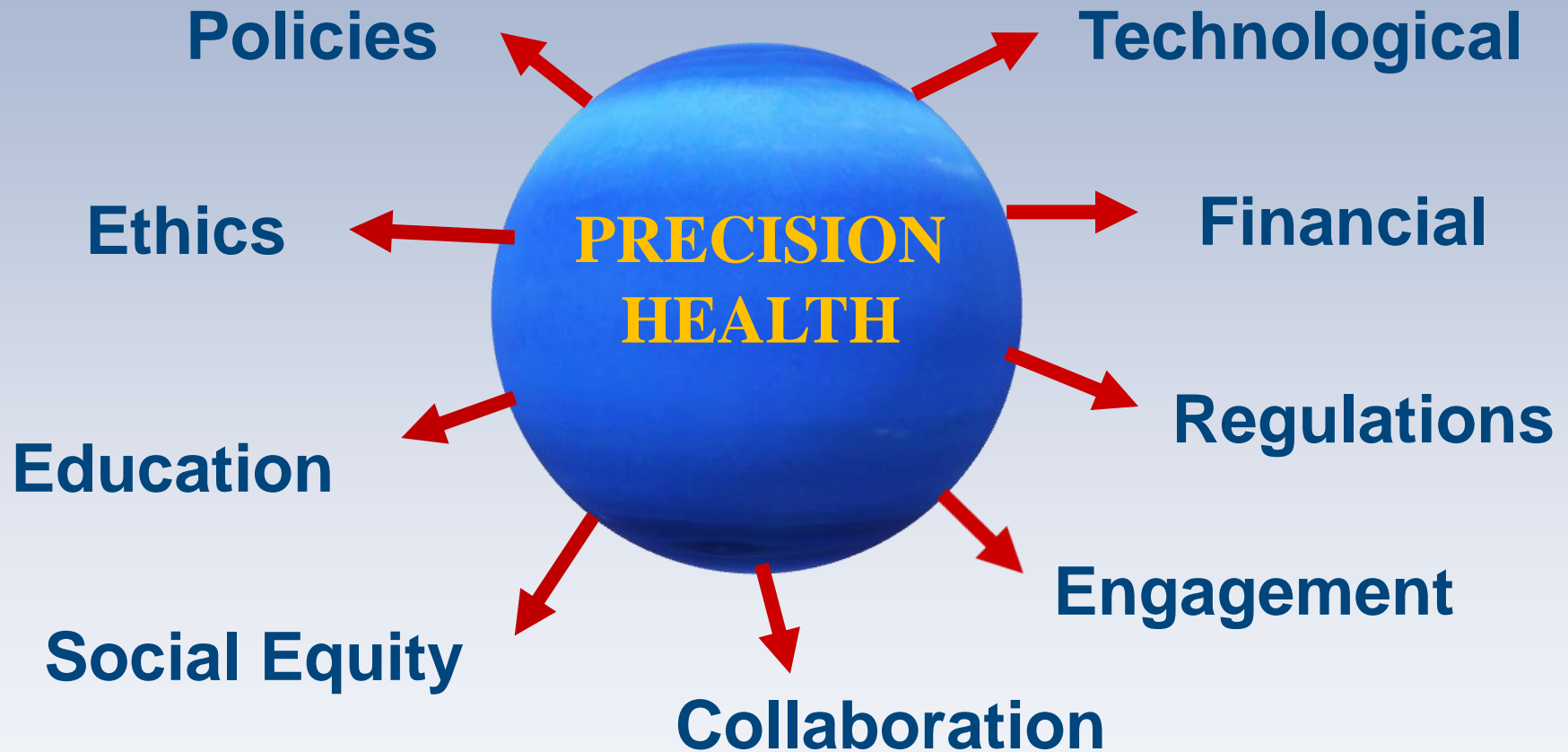
# Purpose

- Identify precision health challenges from the literature.
- Present the Theory of Bureaucratic Caring as a framework to address precision health challenges
- Link the Theory of Bureaucratic Caring to Precision health

# Precision Health

Completion of the Human Genome Project and advances in technology has fueled a scientific revolution. The precision health initiative is poised to capitalize on these discoveries. However, there are serious challenges to be addressed.

# Challenges Identified in the Literature



# Addressing Challenges

- Requires a framework that creates a systematic view that supports collaboration and allows for understanding of relationships, prediction, description, explanation, and management of phenomena.
- Nursing's unique view and clinical grounding make nurses uniquely positioned as leaders and collaborators in the precision health movement.

# Theory of Bureaucratic Caring



Marilyn Anne Ray, RN, BSN, MSN, MA, PhD, CTN-A,  
FSfAA, FAAN, FESPCH (hon).

Professor Emeritus at Florida Atlantic University,  
Christine E. Lynn College of Nursing,  
Boca Raton, Florida, USA.

# Holographic Theory of Bureaucratic Caring

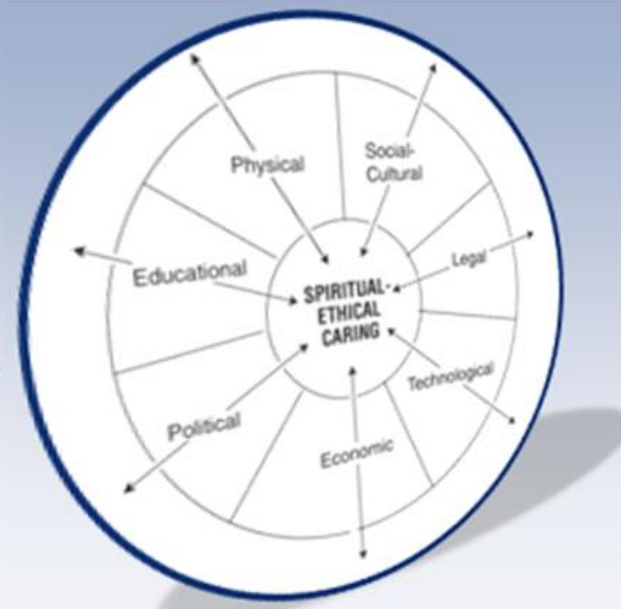
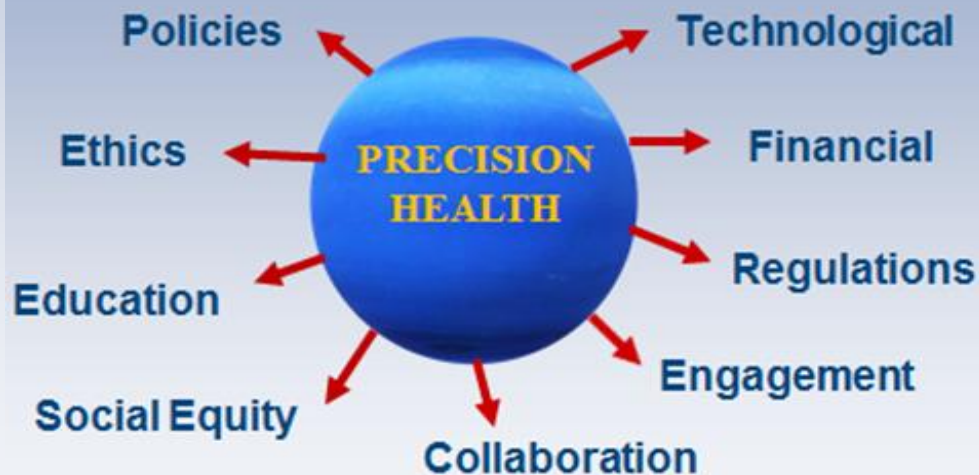




# Theory of Bureaucratic Caring

- Aligns with Precision Health Challenges
- Application to complex systems, wholeness, interconnectedness, and focus on caring

## Challenges Identified in the Literature



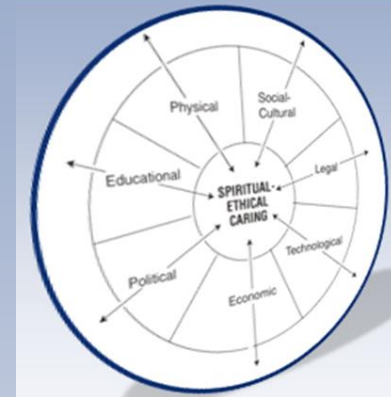
## Domain: Spiritual-Ethical Caring

- Focuses on values, interconnectedness of body, mind, spirit (holism), and moral choice. Caring as respect, moral obligation, and right action for good of others/culture/society
  - **Challenge:** Ethics, Collaboration
  - **Example:** Privacy, informed consent, values, understanding who one is



## Domain: Social- Cultural

- Focus on meaning of caring within social interactions and support for others: communication, seeking understanding of diverse groups, ethnicities, family, organizations, national and global societal cultures.
- **Challenge:** Social Equity, Collaboration
- **Example:** Recruiting diverse groups to precision health, address stigma,



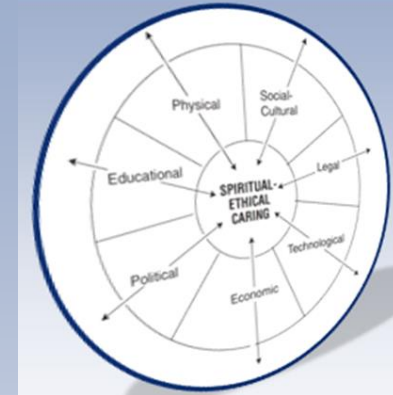
## Domain: Educational

- Focus on formal and informal education, includes communication of all aspects of teaching and sharing information and learning, including Inter-professional education and research.
- **Challenge:** Education
- **Example:** Healthcare professionals, health literacy regarding genomic information



## Domain: Physical

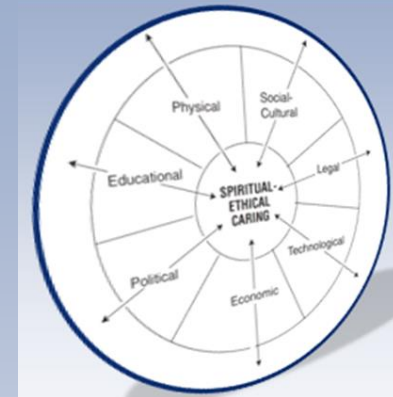
- focus on physical (biological), mental, and emotional states of being, health/illness, healing and dying, interconnectedness of body, mind and spirit and their influence on each other.



- **Challenge:** Engagement
- **Example:** Participation in initiative, return of findings

## Domain: Political

- Associated with authority, power, and control. Considers systems of hierarchy, roles, responsibilities, governmental influences that lend to competition and cooperation in complex organizations.
- **Challenge:** Collaboration, Social equity
- **Example:** Healthcare spending, grant funding, laws (GINA, HIPAA)



## Domain: Economic

- Focus on the meaning of caring related to goods, money, services, budget, scarce human and material resources to maintain economic viability of persons, units, and complex organizations.



- **Challenge:** Financial
- **Example:** balance clinical and cost effectiveness (drugs, testing), data collection & management

## Domain: Technological

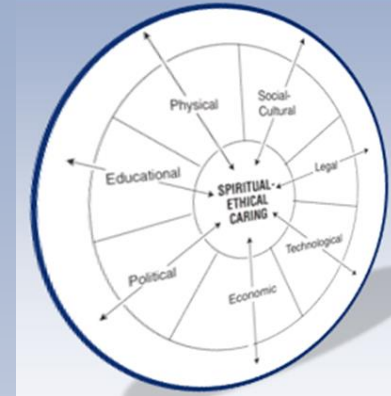
- Focus on nonhuman resources, use of machines, computers, electronic health record, social media, internet, robots, diagnostic tests, pharmacologic agents, skills needed to support persons, families, communities and organizations.
- **Challenge:** Technological
- **Example:** Analyzing, Interpreting, Storing of data (Big Data). Synthesize many platforms





## Domain: Legal

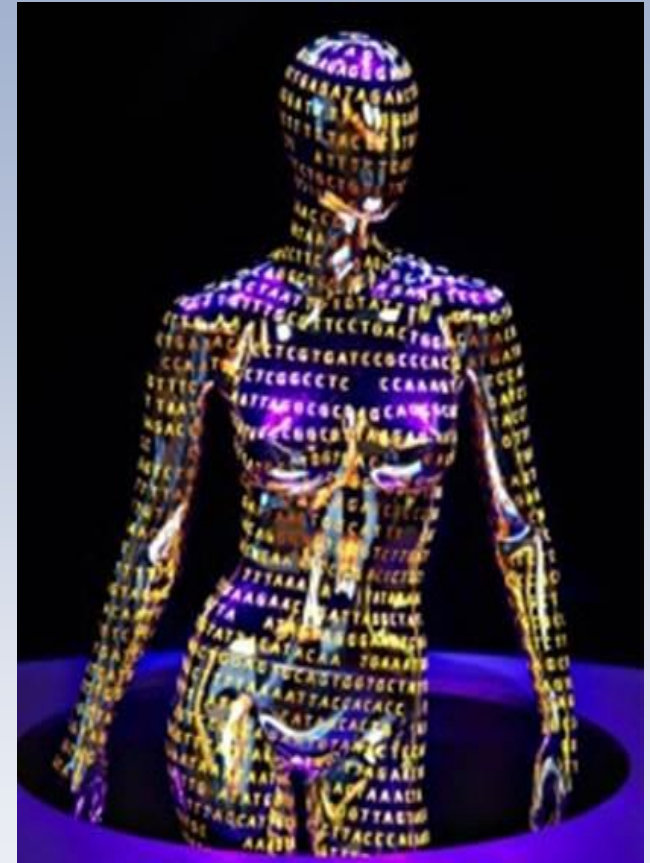
- Focus on the meaning of caring regarding responsibility and accountability, rules, regulations, policies, standards of practice, rights to privacy, malpractice, defensive medicine and nursing.
- **Challenge:** Regulations, Policies, Privacy
- **Example:** Data security, Authorized use, data, infrastructure, FDA regulation, intellectual property, insurance coverage, DTC testing



# Conclusion

- We are at a crossroads in a complex and ever changing environment in healthcare, where caring can bring stability and support health and healing.
- The successful navigation of precision health challenges through the lens of caring offers an opportunity to illuminate the humanity of persons and create an enduring spirit of what matters most.

- While the blending of science, morality, metaphysics, art, and spirituality seems mind boggling, complex issues require thought grounded in the wisdom and understanding of our own humanness
- Perhaps there is a call for “Precision Caring.”



# References

- Duffy, D. J. (2016). Problems, challenges and promises: perspectives on precision medicine. *Briefings In Bioinformatics*, 17(3), 494-504 doi:10.1093/bib/bbv060
- Leyens, L., Horgan, D., Lal, J. A., Steinhausen, K., Satyamoorthy, K., & Brand, A. (2014). Working towards personalization in medicine: main obstacles to reaching this vision from today's perspective. *Personalized Medicine*, 11(7), 641+. doi: 10.2217/pme.14.55
- Ray, M. (2018). Marilyn A. Ray Website. Retrieved from: <https://marilynray.com/>
- Ray, M. (2018). Theory of bureaucratic caring. In Smith M.J. & Liehr, P.R. (Ed.), *Middle Range Theory for Nursing* (pp. 107-115). New York, Springer Publishing Company, LLC.
- Rothstein, M. (2017). Structural Challenges of Precision Medicine: Currents in Contemporary Bioethics. *Journal Of Law, Medicine & Ethics*, 45(2), 274-279
- Sabatello, M., & Appelbaum, P. S. (2017). The Precision Medicine Nation. *Hastings Center Report*, 47(4), 19-29. doi:10.1002/hast.736
- Starkweather, A. R., Coleman, B., Barcelona de Mendoza, V., Hickey, K. T., Menzies, V., Fu, M. R., & ... Harper, E. (2018). Strengthen federal and local policies to advance precision health implementation and nurses' impact on healthcare quality and safety. *Nursing Outlook*, 66401-406. doi:10.1016/j.outlook.2018.06.001
- Tully, L. A., & Grady, P. A. (2015). A path forward for genomic nursing research. *Research in Nursing & Health*, 38(3), 177-179. doi:10.1002/nur.21659
- Watson, J. (2005). *Caring science as sacred science* (1st ed.). Philadelphia: F.A. Davis Co