

Data Sensing with Mobile Vehicles

Jordan Miller

Dr. Jinwoo Jang



Self Driving Cars

Lane Detection

- Rely on lanes

What if no lanes
are there?



Steps in Processing



Original Image



Yellow and White Color Mask



Apply Masks to HLS



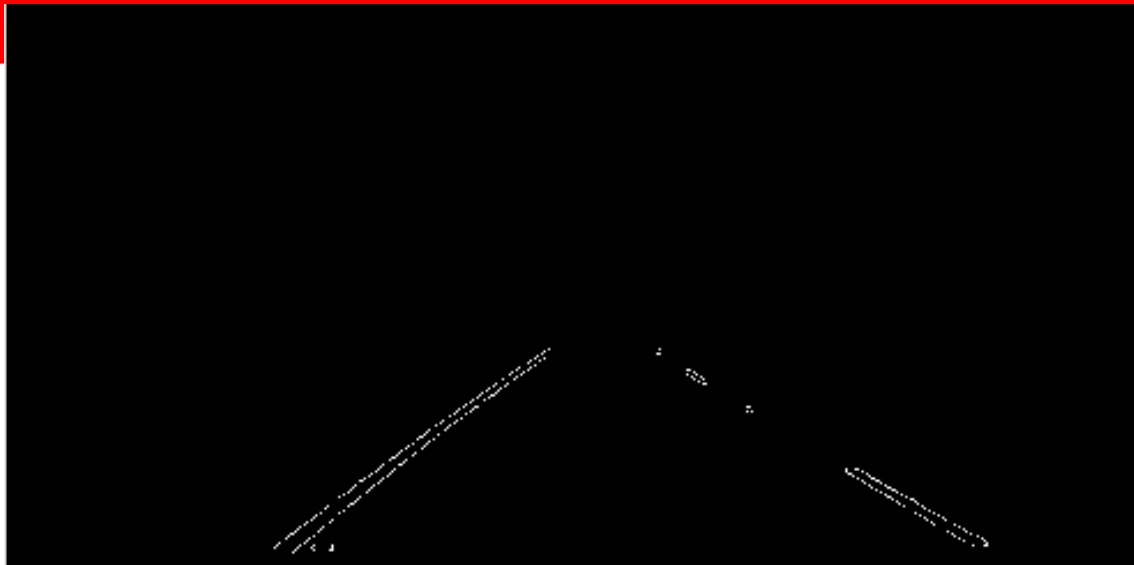
Gray Scale



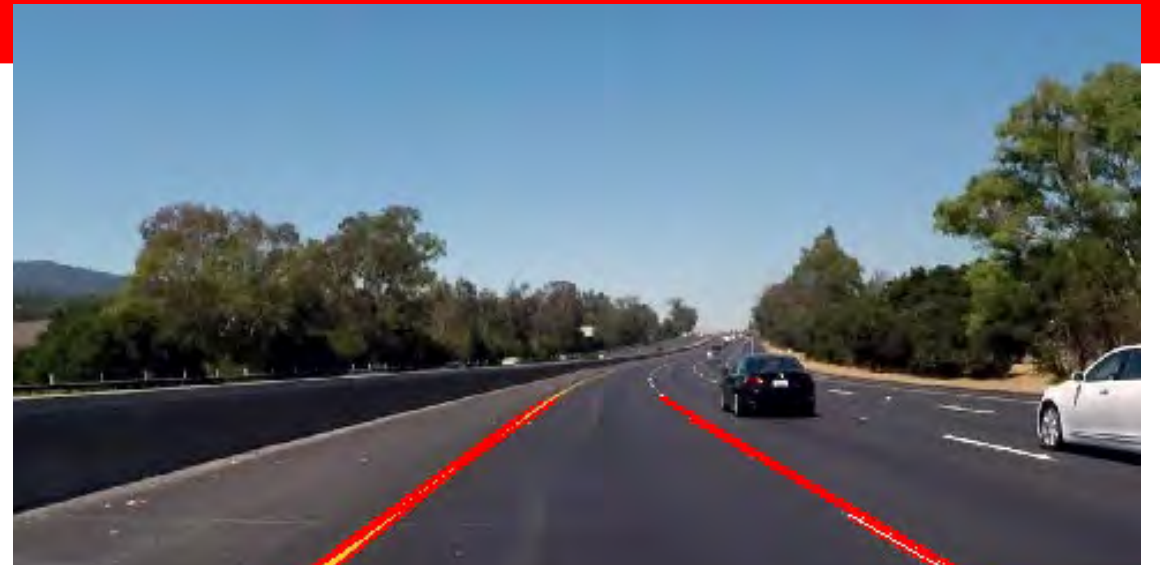
Gaussian Blur



Canny Edge Detection



Region of Interest



Hough Line Detection



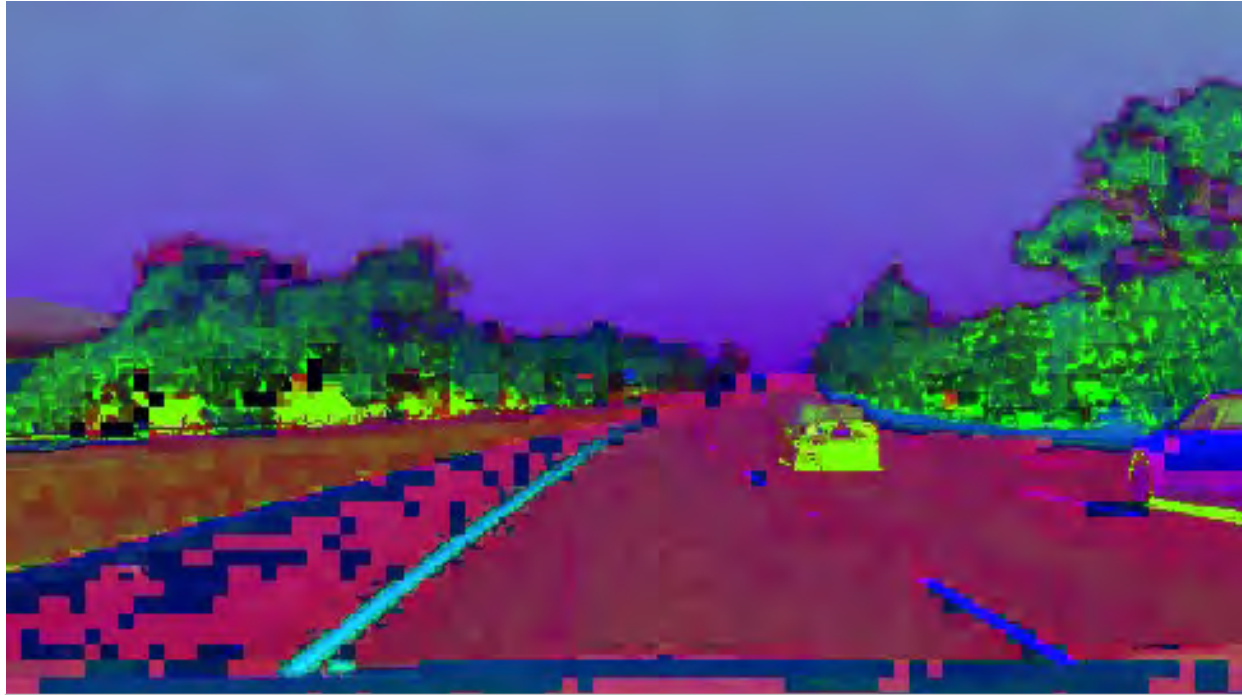
Draw Lines

**How about
real-time?**

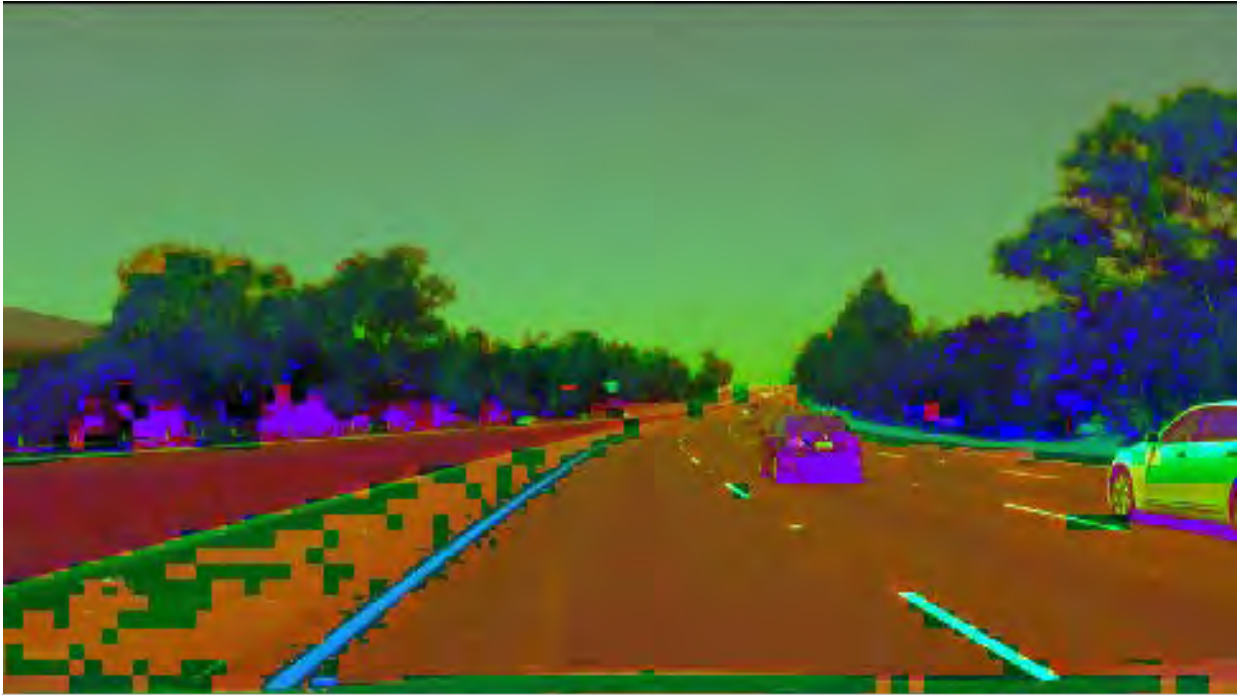
Conclusion

- Internet of Things
- Lane Detection
- Improve the algorithm
- Incorporate GPS

Questions?



HSV Color Space



HLS Color Space