

HOUSING

RETURNING AND TRANSFER STUDENTS

FALL 2022 - SPRING 2023 RATES



Residence halls and apartment communities include:

- Package Centers • Furniture and blinds • Resident-only building access • Wi-Fi internet • Cable TV / Streaming
- Ice Machines • Vending Machines • Barbecue Pits • Sand Volleyball Courts • Study Area and Rooms
- Computer Labs • Multi-purpose Rooms • Free laundry facilities

RATES ARE PER STUDENT, PER SEMESTER



INDIAN RIVER TOWERS

- Shared double room = **\$3,365**
- Single room = **\$4,600**
- Suite-style housing with **one** bathroom in unit
- Living room area
- Meal plan required, community kitchen



INNOVATION VILLAGE APARTMENTS (NORTH/SOUTH)

- 4 bed / 2 bath apartment = **\$5,180**
- 2 bed / 2 bath apartment* = **\$5,480**
- *IVA-North only
- Full size bed
- Laundry in unit
- Kitchen in unit, meal plan optional
- Fitness room in IVA-South



UNIVERSITY VILLAGE APARTMENTS

- 4 bed / 1 bath apartment = **\$4,200**
- Studio single / 1 bath = **\$4,600**
- Shared studio double / 1 bath = **\$3,100**
- Kitchen in unit, meal plan optional

ATLANTIC PARK TOWERS



- 4 Single beds / 2 bath = **\$4,885**
- 2 Single beds / 1 bath = **\$4,750**
- 4 Double beds / 1 bath = **\$3,900**
- Suite Style housing with bathroom(s) in unit
- Laundry room on each floor
- Meal plan required, community kitchenette on each floor.

Students who have a health and/or medical condition that require special accommodation or consideration in the room assignment process must contact and register with Student Accessibility Services at 561-297-3880. Prices subject to change pending FAU Board of Trustees approval.

For more information please contact: FAU Housing and Residential Education Email: housing@fau.edu Call: 561-297-2880 Visit: fau.edu/housing

HOUSING

RETURNING AND TRANSFER STUDENTS

FALL 2022 - SPRING 2023

ROOM LAYOUTS AND DIMENSIONS

All mattresses are extra-long twin size (36" x 80") with the exception of Innovation Village Apartments that have a standard full-size mattress.



***ALL MEASUREMENTS ARE APPROXIMATE AND MAY VARY FOR SOME ROOMS.**

INDIAN RIVER TOWERS

SHARED DOUBLE SUITE

- Two double rooms
- Accommodates 4 students
- Dimensions: 13' x 12'
- Rooms ending in L and R



SINGLE SUITE

- Four single rooms
- Accommodates 4 students
- Rooms ending in A and D 13' x 11' 5"
- Rooms ending in B and C 11' 5" x 9' 5"



INNOVATION VILLAGE APARTMENTS (NORTH/SOUTH)

4 BED / 2 BATH

- Accommodates 4 students
- Dimensions: 9'3" x 11'9"
- Rooms ending in A,B,C and D



2 BED / 2 BATH*

- Accommodates 2 students
- Dimensions: 9'3" x 11'5"
- *IVA-North only
- Rooms ending in L and R



UNIVERSITY VILLAGE APARTMENTS

4 BED / 1 BATH

- Accommodates 4 students
- Dimensions: 15' x 12'
- Rooms ending in A,B,C and D



STUDIO SINGLE

- Accommodates 1 student
- Dimensions: 15' x 12'

SHARED STUDIO DOUBLE

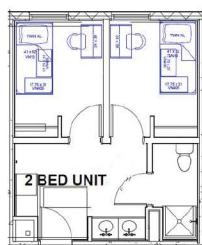
- Accommodates 2 students
- Dimensions: 15' x 12'



ATLANTIC PARK TOWERS

2 SINGLE BEDS / 1 BATH

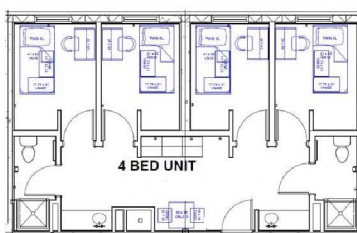
Rooms ending in L and R



DIMENSIONS
11' 2" X 8' 4"

4 SINGLE BEDS / 2 BATH

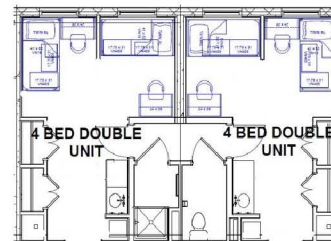
Rooms ending in A,B,C, D



DIMENSIONS
11' 9" X 7' 9"

4 DOUBLE BEDS / 1 BATH

Rooms ending in E and F



DIMENSIONS
13' 11" X 9' 2"

Students who have a health and/or medical condition that require special accommodation or consideration in the room assignment process must contact and register with Student Accessibility Services at 561-297-3880. Prices subject to change pending FAU Board of Trustees approval.

For more information please contact: FAU Housing and Residential Education Email: housing@fau.edu Call: 561-297-2880 Visit: fau.edu/housing