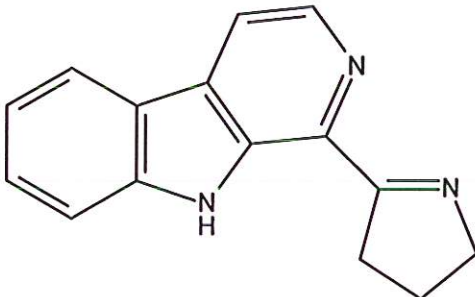


HBOI-386	
EUDISTOMIN I	
$C_{15}H_{13}N_3$	235.28
<i>Eudistoma olivaceum</i>	
Kobayashi, Harbour, Gilmore and Rinehart, 1984, <i>J. Am. Chem. Soc.</i> , 106:1526-1528	

isolation scheme (Visio) attached

hplc method (trace attached)

Method: Vydac C18 Protein and Peptide, 4.6 x 250mm, 10 μ
 flow 1 ml/min, detection: PDA: UV (extracted at 220 nm, black); ELSD (green dotted)
 A: H₂O:CH₃CN (95:5, v/v), B: CH₃CN
 t=0 min A:B (90:10, v/v), t=20 min (100%B) , t=28 min (100%B)

LC-MS method

Method: Vydac C18 Protein and Peptide, 2.1x150 mm, flow 0.2 ml/min
 A: H₂O (0.1% formic acid), B:CH₃CN (0.1% formic acid)
 t= 0 min A:B (90:10, v/v), t=15 min (100%B), t=21 min (100%B), t=22 min A:B(90:10, v/v)
 using a linear gradient

¹H (600 MHz) CDCl₃ CD₃OD (Methanol-d₄) CDCl₃/CD₃OD

¹³C (150 MHz) CDCl₃ CD₃OD (Methanol-d₄) CDCl₃/CD₃OD

solubility CHCl₃/MeOH (9:1) MeOH DMSO

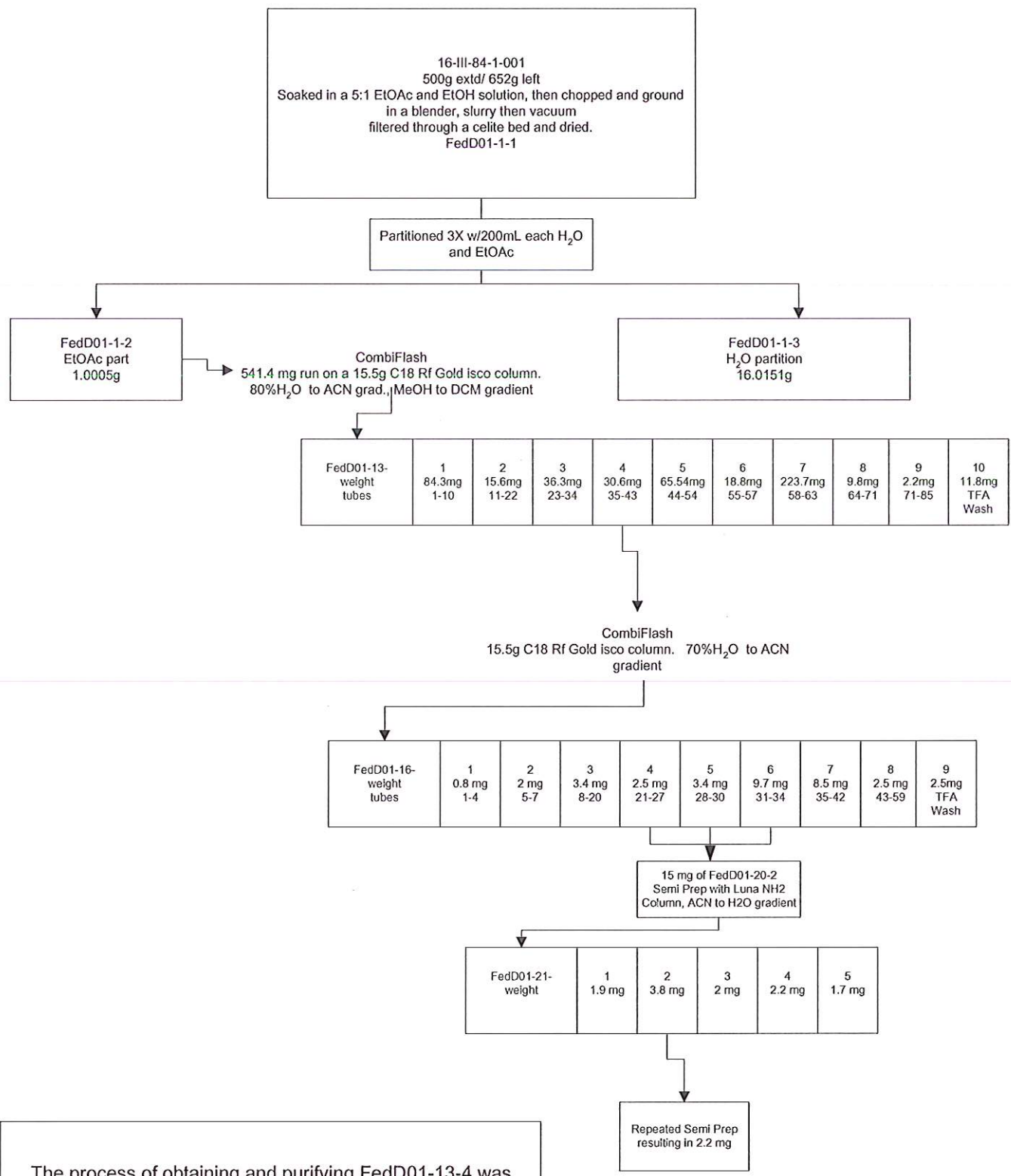
estimated purity >90%

sample weight 7.9 mg

For further information contact:

Amy E. Wright, PhD, HBOI@FAU, 5600 US 1, North, Fort Pierce, FL 34946
awrigh33@hboi.fau.edu, 772-242-2459

Date: 7/23/13



The process of obtaining and purifying FedD01-13-4 was repeated 3 more times resulting in FedD01-2-4, FedD01-33-4 and FedD01-45-4, 5 and 6. FedD01-33-4 was further fractionated on Walter resulting in FedD01-34-2 and FedD01-34-3. Semi Prep was done on all these fractions and added to FedD01-21-2 resulting in 8 mg of FedD01-47-2.

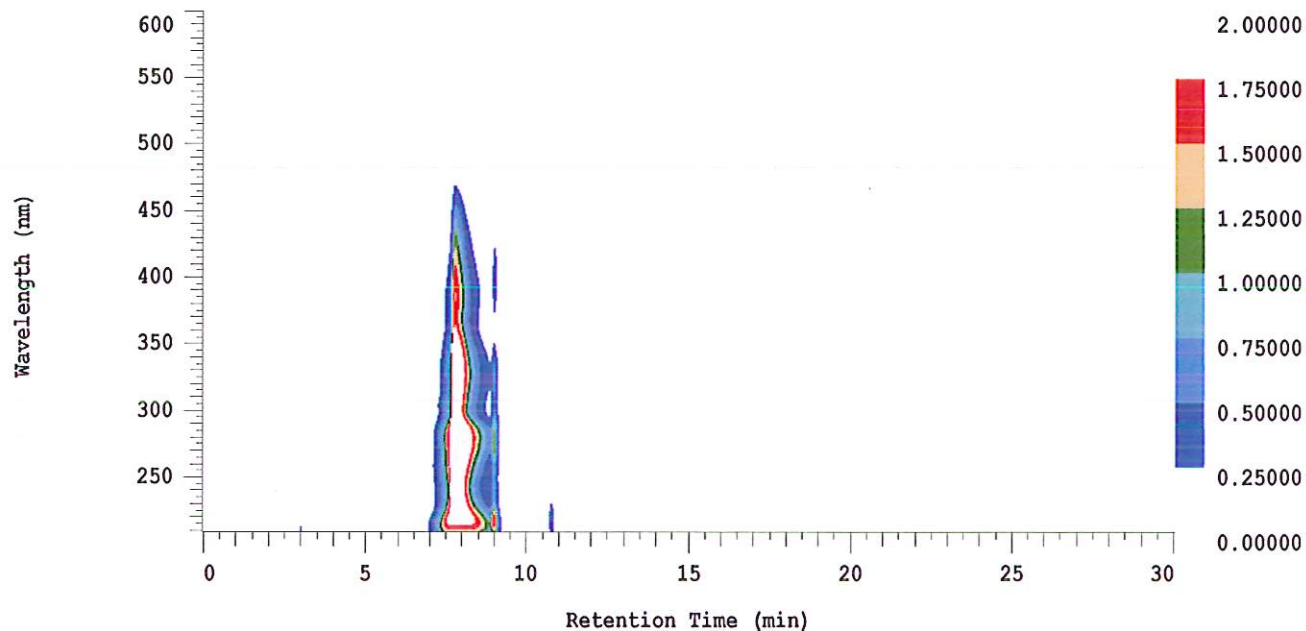
D-2000 Elite HPLC System Manager Report

Analyzed: 07/19/2013 05:21 PM

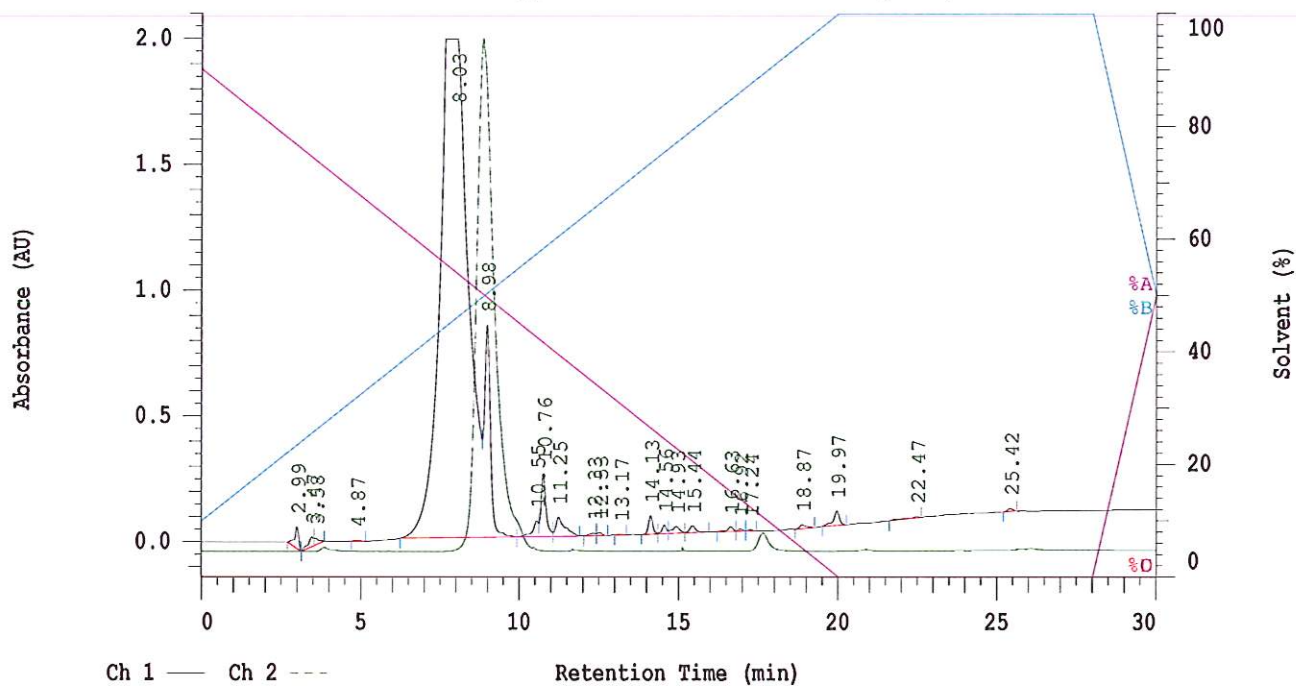
Reported: 07/19/2013 05:59 PM

Sample Name: HBOI-386

Sample Description: HBOI-386 Eudistomin



Channel 1 Chrom Type: Fixed WL Chromatogram, 230 nm



Acquisition Method: autosampler_30min_wELSD_TFA

Column Type: Vydac C18

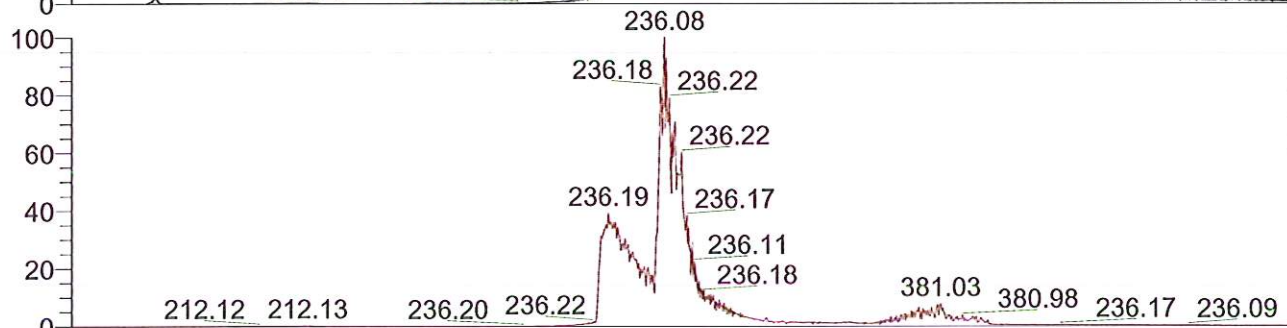
Pump A Solvent A: H2O/5% ACN TFA 0.1% Pump A Solvent B: ACN TFA 0.1%

Method Description:

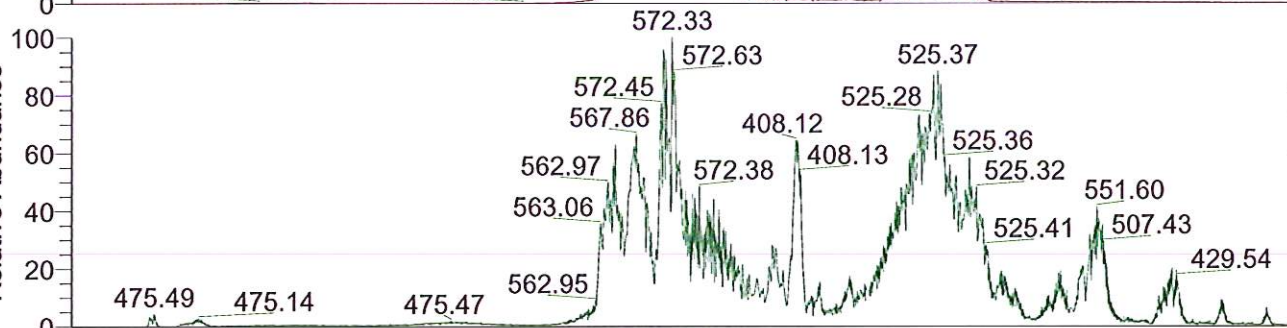
0.00 - 21.00



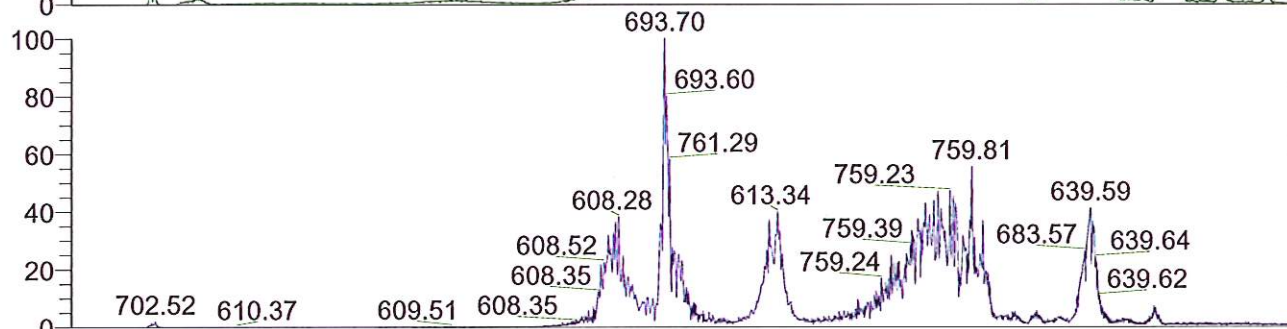
NL: 5.43E7
TIC F: ITMS + c ESI Full ms [200.00-2000.00] MS BG_FedD01-47-2



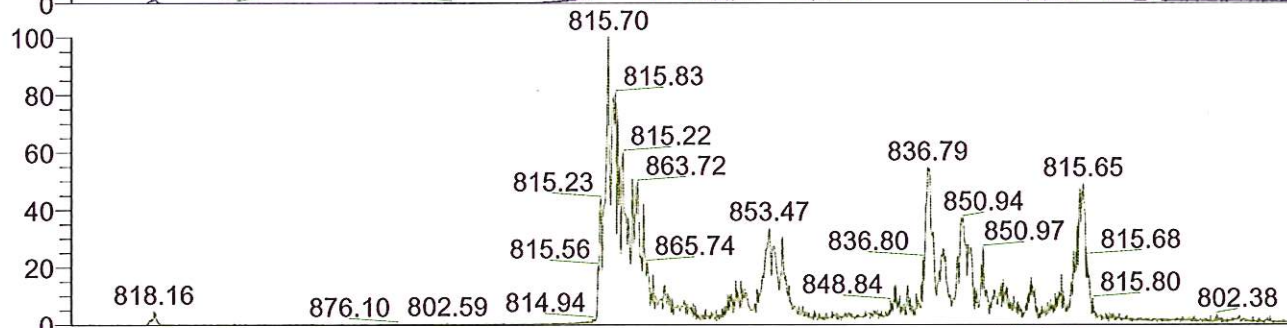
NL: 3.95E7
Base Peak m/z= 200.00-400.00 F: ITMS + c ESI Full ms [200.00-2000.00] MS BG_FedD01-47-2



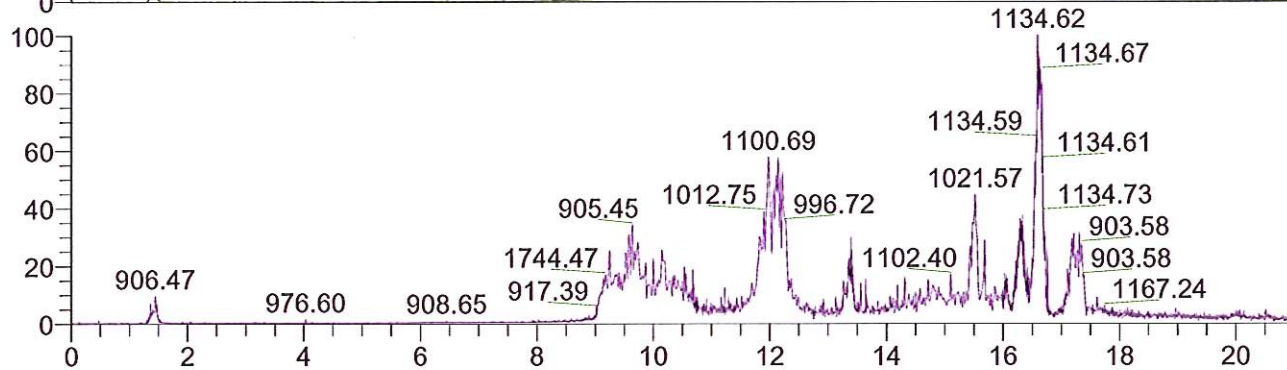
NL: 4.24E5
Base Peak m/z= 400.00-600.00 F: ITMS + c ESI Full ms [200.00-2000.00] MS BG_FedD01-47-2



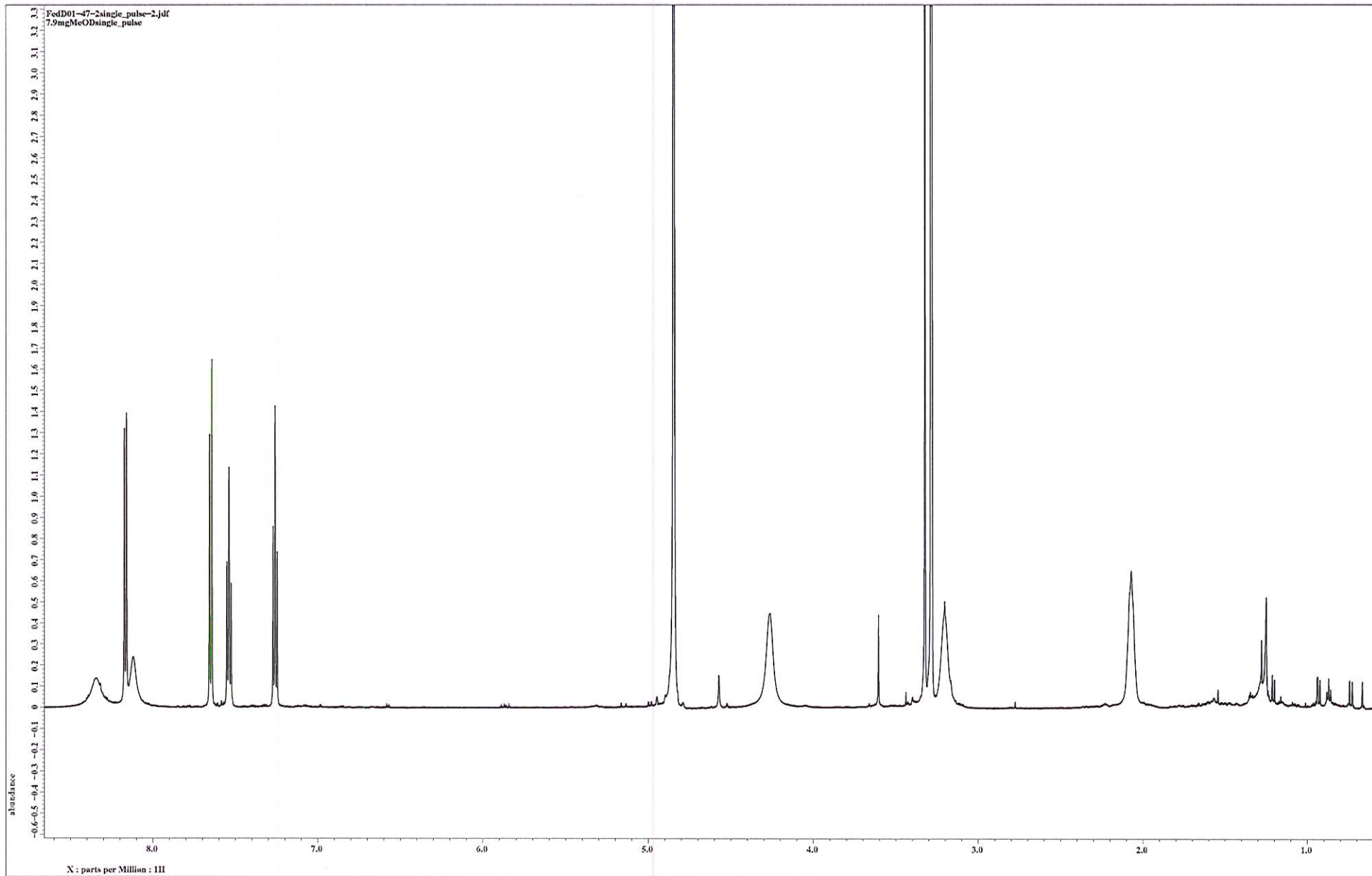
NL: 3.54E5
Base Peak m/z= 600.00-800.00 F: ITMS + c ESI Full ms [200.00-2000.00] MS BG_FedD01-47-2



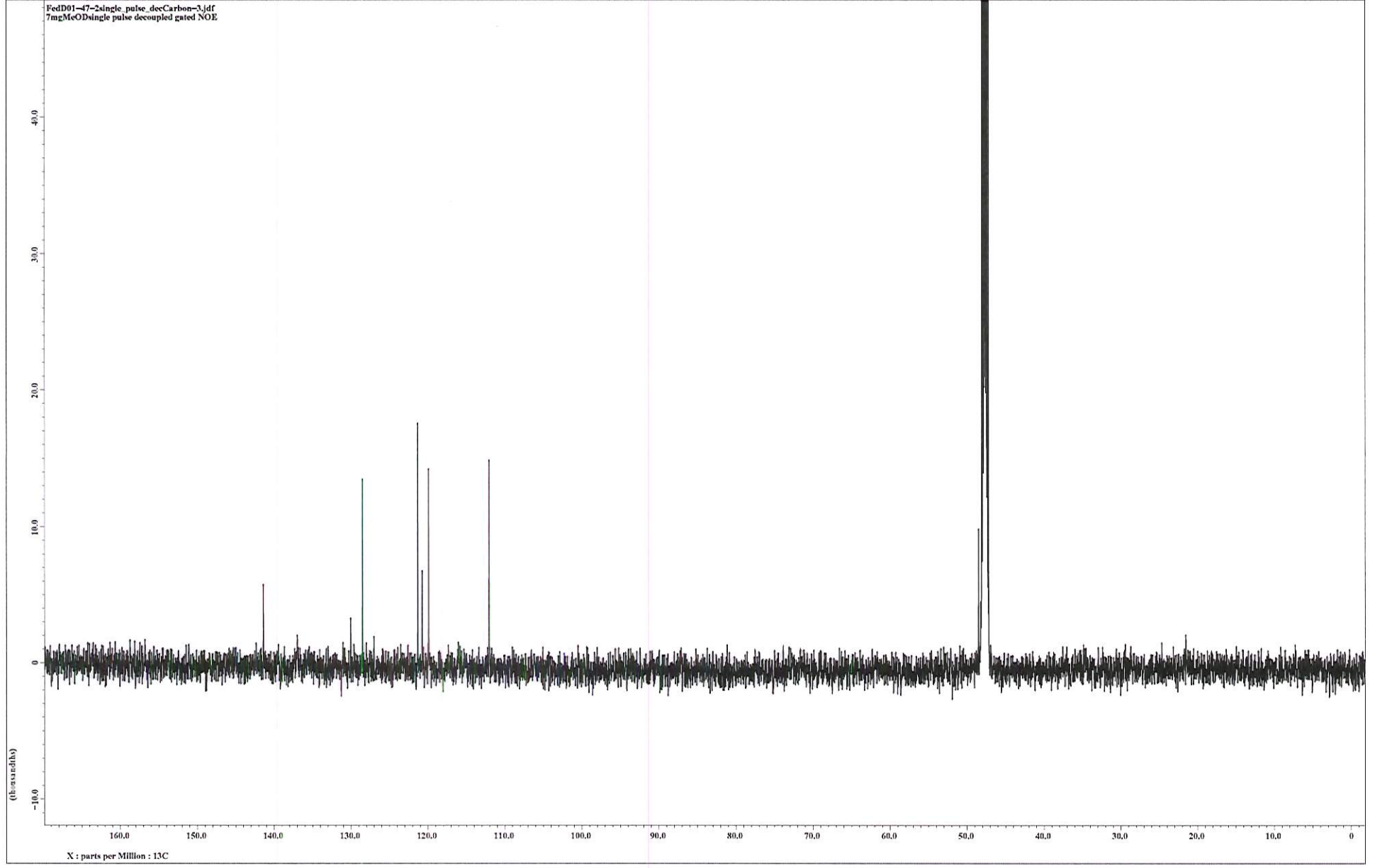
NL: 9.51E4
Base Peak m/z= 800.00-900.00 F: ITMS + c ESI Full ms [200.00-2000.00] MS BG_FedD01-47-2



NL: 4.75E4
Base Peak m/z= 900.00-2000.00 F: ITM + c ESI Full ms [200.00-2000.00] MS BG_FedD01-47-2



FedD01-47-2single_pulse_decCarbon-3.jdf
7mgMeODsingle pulse decoupled gated NOE



X : parts per Million : 13C