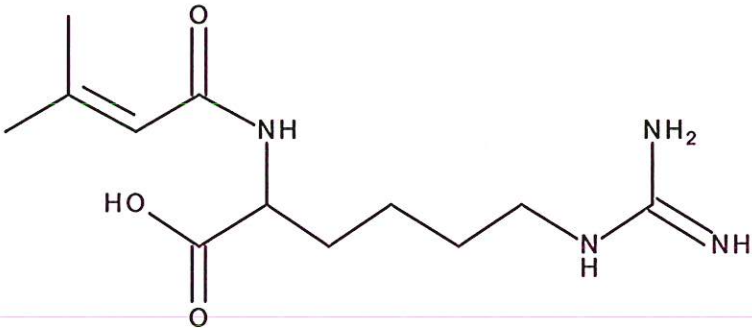


HBOI-359	
PRENYLATED AMINO ACID	
$C_{12}H_{22}N_4O_3$	270.33
<i>Asteropus</i> sp.	
manuscript in prep	

isolation scheme (Visio) attached

hplc method (trace attached)

Method: Vydac C18 Protein and Peptide, 4.6 x 250mm, 10 μ
 flow 1 ml/min, detection: PDA: UV (extracted at 220 nm, black); ELSD (green dotted)
 A: H₂O:CH₃CN (95:5, v/v, 0.1% TFA), B: CH₃CN (0.1% TFA)
 t=0 min A:B (90:10, v/v), t=20 min (100%B) , t=28 min (100%B)

LC-MS method

Method: Vydac C18 Protein and Peptide, 2.1x150 mm, flow 0.2 ml/min
 A: H₂O (0.1% formic acid), B:CH₃CN (0.1% formic acid)
 t= 0 min A:B (90:10, v/v), t=15 min (100%B), t=21 min (100%B), t=22.1 min A:B(90:10, v/v)
 using a linear gradient

¹H (600 MHz) CDCl₃ CD₃OD (Methanol-d₄) CDCl₃/CD₃OD

¹³C (150 MHz) CDCl₃ CD₃OD (Methanol-d₄) CDCl₃/CD₃OD

solubility CHCl₃/MeOH (9:1) MeOH DMSO

estimated purity >90%

sample weight 28.4 mg

For further information contact:

Amy E. Wright, PhD, HBOI@FAU, 5600 US 1, North, Fort Pierce, FL 34946
awrigh33@hboi.fau.edu, 772-242-2459

Date: 1/28/13

ROBL24-41-22
47.5 mg

LCMS Purification using a C-18 Vydac precolumn 15ml/min

A: H₂O:CH₃CN(95:5) - 0.1%TFA, B: CH₃CN - 0.1%TFA

t=0 min A:B (95:5), t=5min A:B (80:20), t=18min A:B (40:60), t=20 min (100%B), t=22 min A:B (50:50)

RUSF1-39-1
0.7 mg

RUSF1-39-2
15.9 mg

RUSF1-39-3
7 mg

RUSF1-39-4
0.6 mg

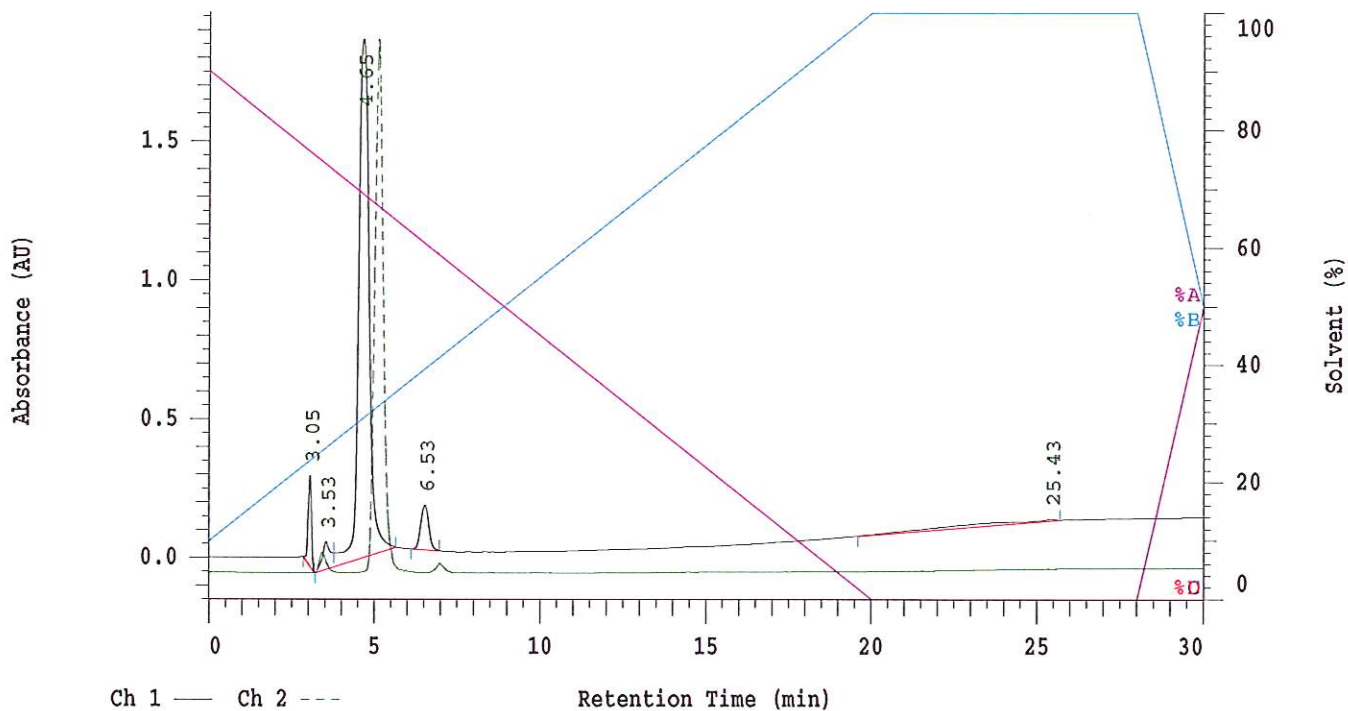
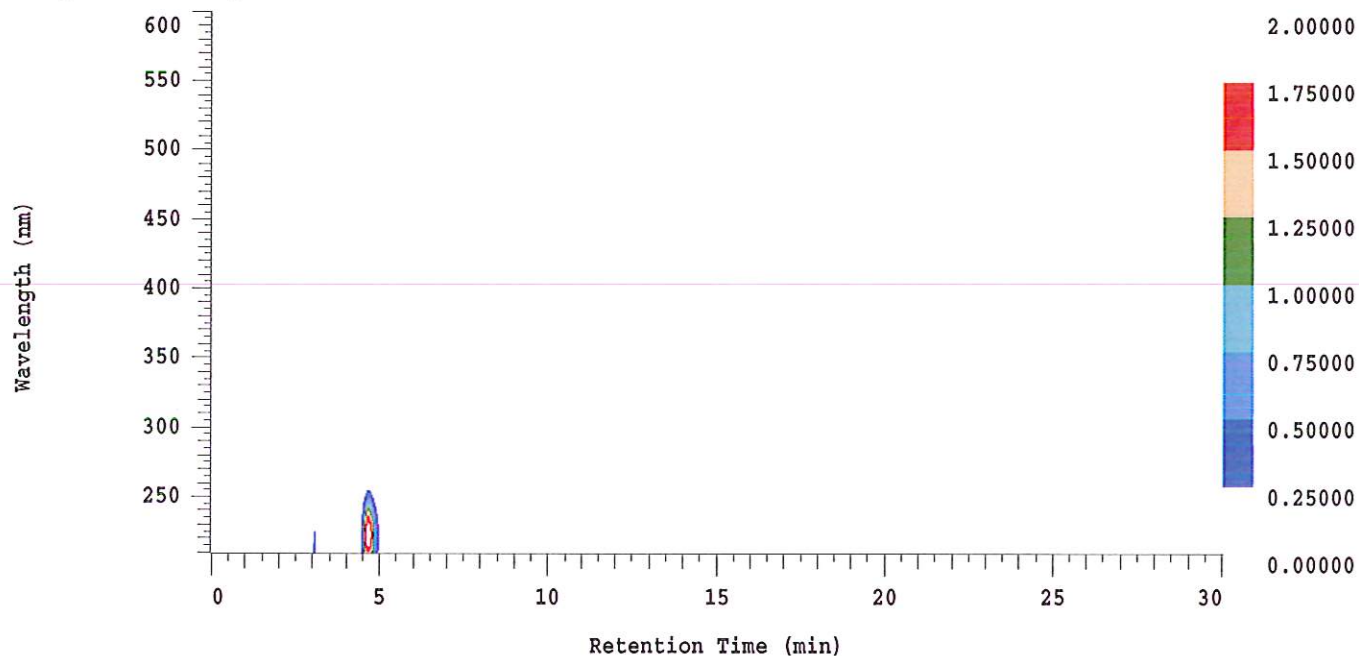
D-2000 Elite HPLC System Manager Report

Analyzed: 01/24/2013 11:07 PM

Reported: 01/25/2013 08:03 AM

Sample Name: HBOI-359

Sample Description: HBOI-359



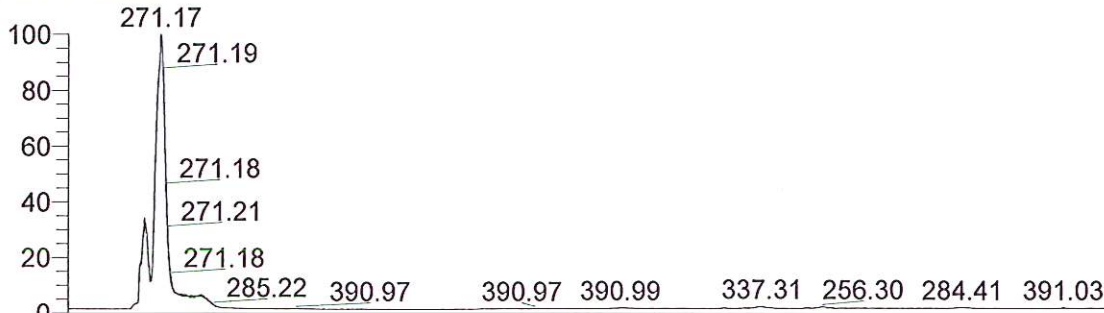
Acquisition Method: NIH_30min_UV220_wELSD_TFA

Column Type: Vydac C18

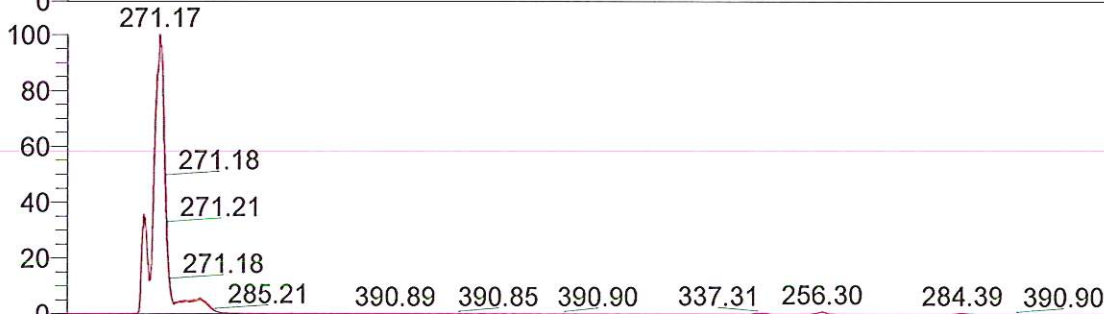
Pump A Solvent A: H2O/5% ACN TFA 0.1% Pump A Solvent B: ACN TFA 0.1%

Method Description:

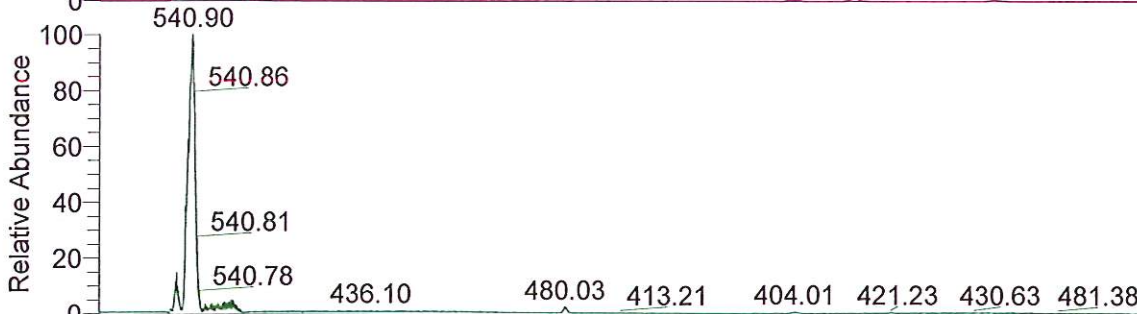
RT: 0.00 - 24.99



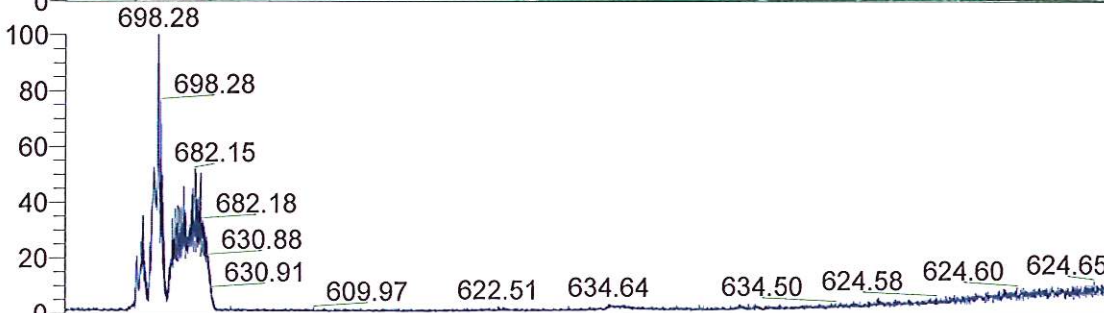
NL: 1.48E7
TIC F: ITMS + c ESI Full ms [200.00-2000.00] MS
BG_HB_359_Prenylated_amino_acid_130124110223



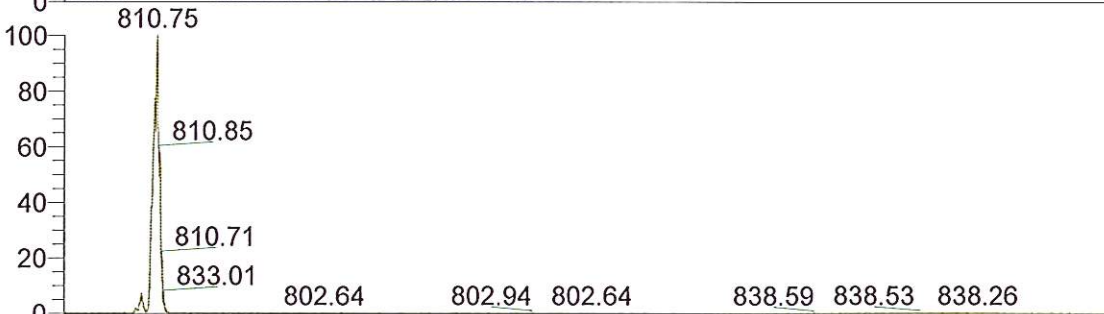
NL: 9.20E6
Base Peak m/z= 200.00-400.00
F: ITMS + c ESI Full ms [200.00-2000.00] MS
BG_HB_359_Prenylated_amino_acid_130124110223



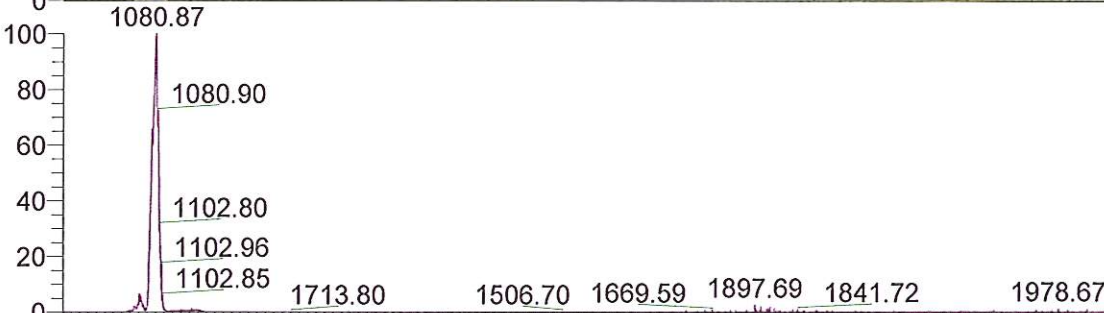
NL: 3.69E5
Base Peak m/z= 400.00-600.00
F: ITMS + c ESI Full ms [200.00-2000.00] MS
BG_HB_359_Prenylated_amino_acid_130124110223



NL: 2.50E4
Base Peak m/z= 600.00-800.00
F: ITMS + c ESI Full ms [200.00-2000.00] MS
BG_HB_359_Prenylated_amino_acid_130124110223



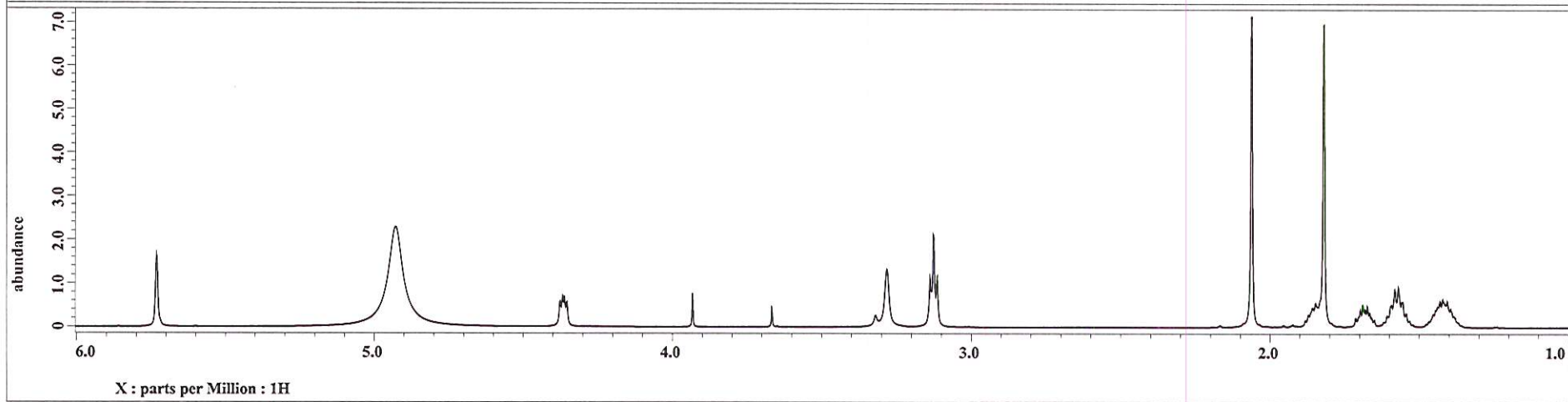
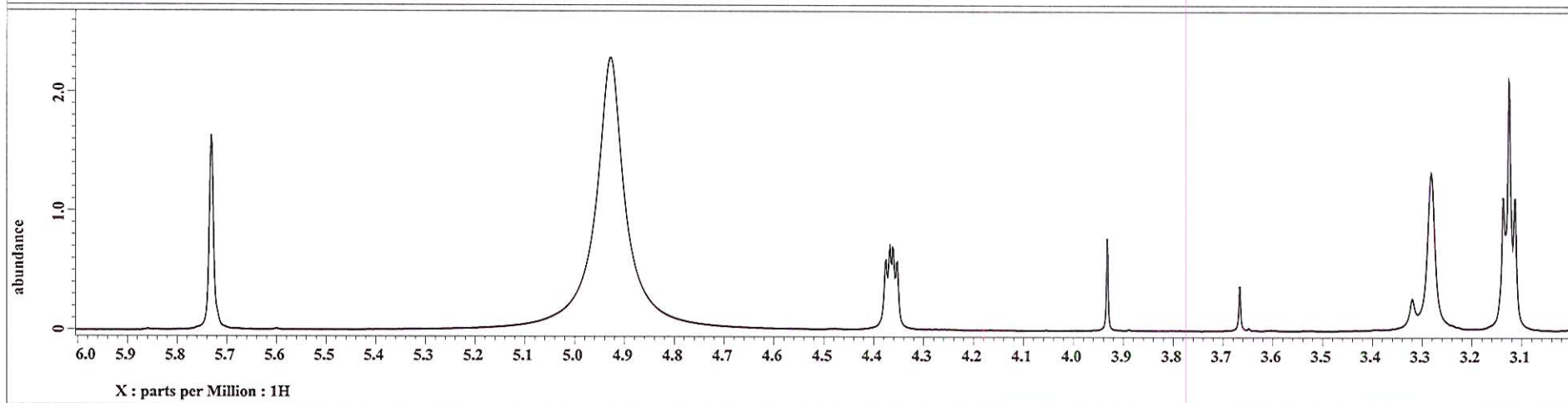
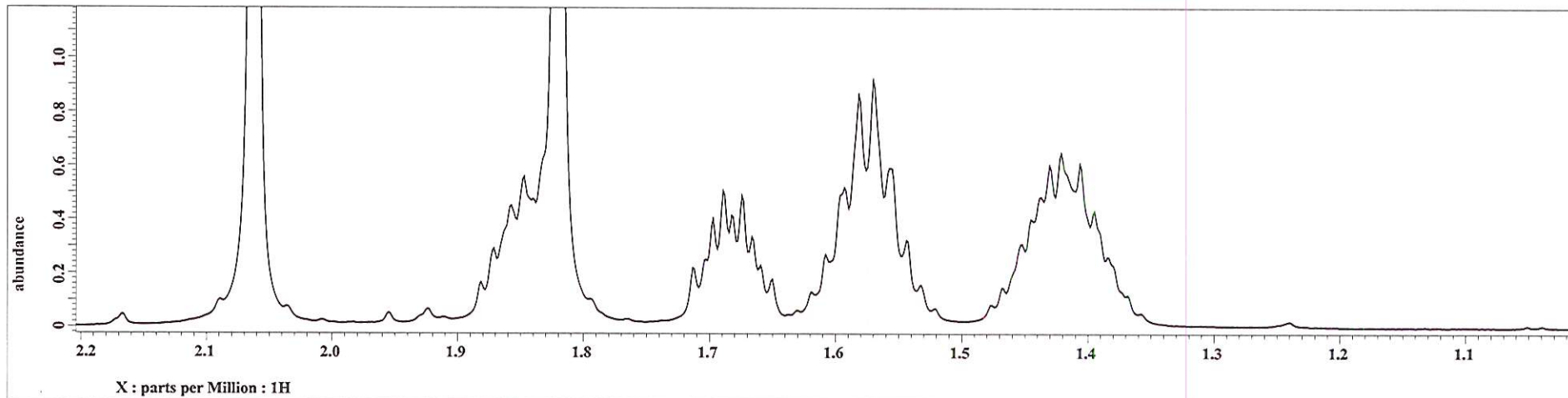
NL: 1.83E5
Base Peak m/z= 800.00-900.00
F: ITMS + c ESI Full ms [200.00-2000.00] MS
BG_HB_359_Prenylated_amino_acid_130124110223



NL: 1.36E5
Base Peak m/z= 900.00-2000.00
F: ITMS + c ESI Full ms [200.00-2000.00] MS
BG_HB_359_Prenylated_amino_acid_130124110223

Time (min)

Ru#1-39-2
AB 359



4B359

