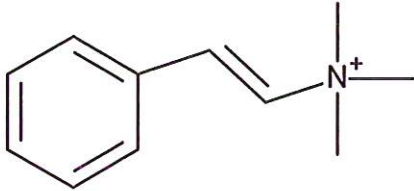


HBOI-358	
N, N, N TRIMETHYL AROMATIC	
$C_{11}H_{16}N^+$	162.13
<i>Corallistes</i> sp.	

isolation scheme (Visio) attached

hplc method (trace attached)

Method: Vydac C18 Protein and Peptide, 4.6 x 250mm, 10 $\mu$   
 flow 1 ml/min, detection: PDA: UV (extracted at 220 nm, black); ELSD (green dotted)  
 A: H<sub>2</sub>O:CH<sub>3</sub>CN (95:5, v/v, 0.1% TFA), B: CH<sub>3</sub>CN (0.1% TFA)  
 t=0 min A:B (90:10, v/v), t=20 min (100%B) , t=28 min (100%B)

LC-MS method

Method: Vydac C18 Protein and Peptide, 2.1x150 mm, flow 0.2 ml/min  
 A: H<sub>2</sub>O (0.1%formic acid), B: CH<sub>3</sub>CN (0.1%formic acid)  
 t= 0 min A:B (90:10, v/v), t=15 min (100%B), t=21 min (100%B), t=22.1 min A:B(90:10, v/v)  
 using a linear gradient

<sup>1</sup>H (600 MHz)       CDCl<sub>3</sub>       CD<sub>3</sub>OD (Methanol-d<sub>4</sub>)       CDCl<sub>3</sub>/CD<sub>3</sub> OD

<sup>13</sup>C (150 MHz)       CDCl<sub>3</sub>       CD<sub>3</sub>OD (Methanol-d<sub>4</sub>)       CDCl<sub>3</sub>/CD<sub>3</sub> OD

solubility       CHCl<sub>3</sub>/MeOH (9:1)       MeOH       DMSO

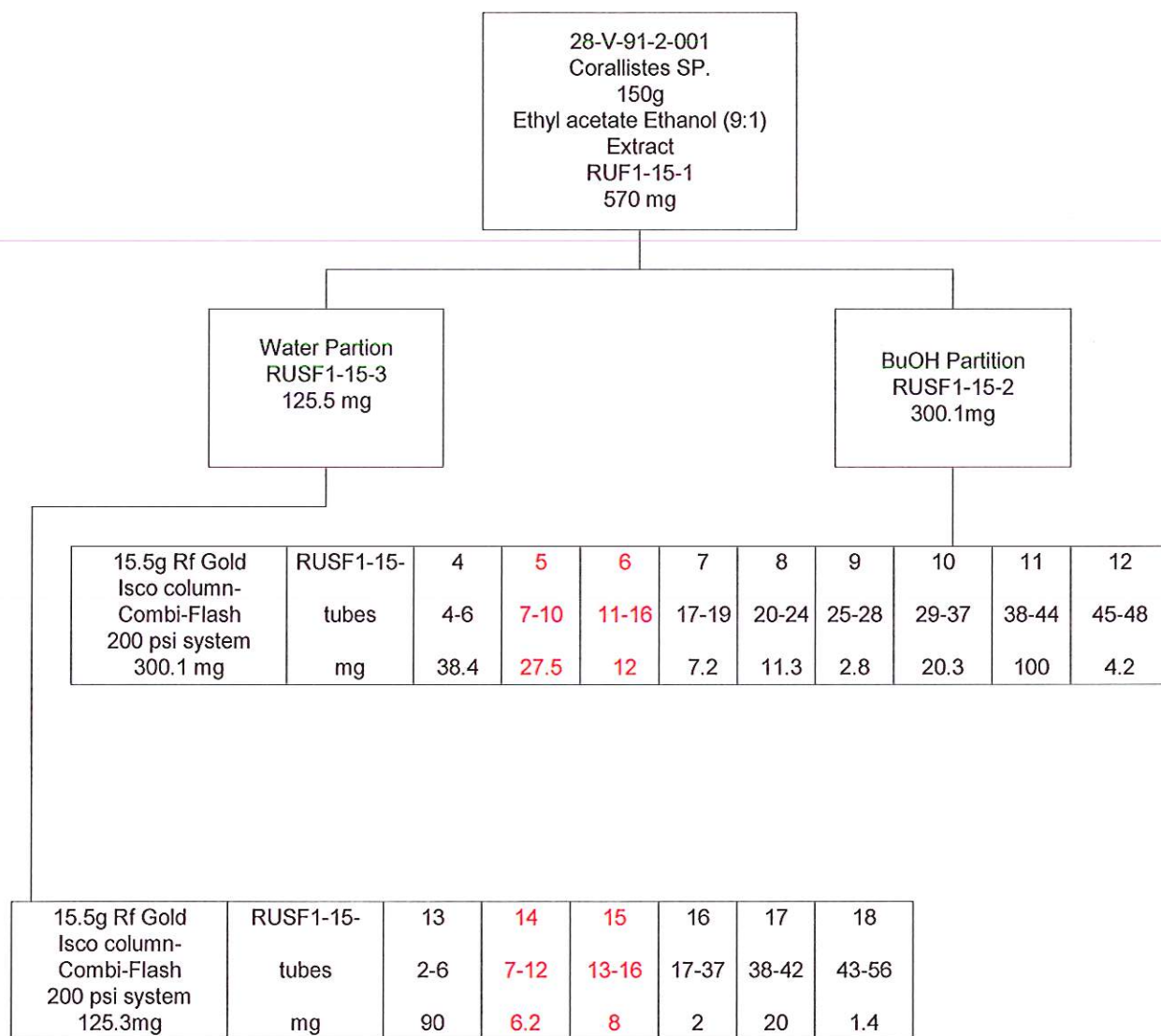
estimated purity >90%

sample weight 21.0 mg

For further information contact:

Amy E. Wright, PhD, HBOI@FAU, 5600 US 1, North, Fort Pierce, FL 34946  
[awrigh33@hboi.fau.edu](mailto:awrigh33@hboi.fau.edu), 772-242-2459

Date: 1/28/13



Combi-Flash:

A: H<sub>2</sub>O:CH<sub>3</sub>CN (95:5)-0.1 %TFA, B:CH<sub>3</sub>CN - 0.1% TFA, 30 ml/min  
 t=0 min A:B (80:20), t= 2.3 min A:B (80:20), t=5.8 A:B (65:45), t=30 A:B (5:95)

RUSF1-20-1 was isolated from fractions RUSF1-15-5, RUSF1-15-6, RUSF1-15-14 and RUSF1-15-15.

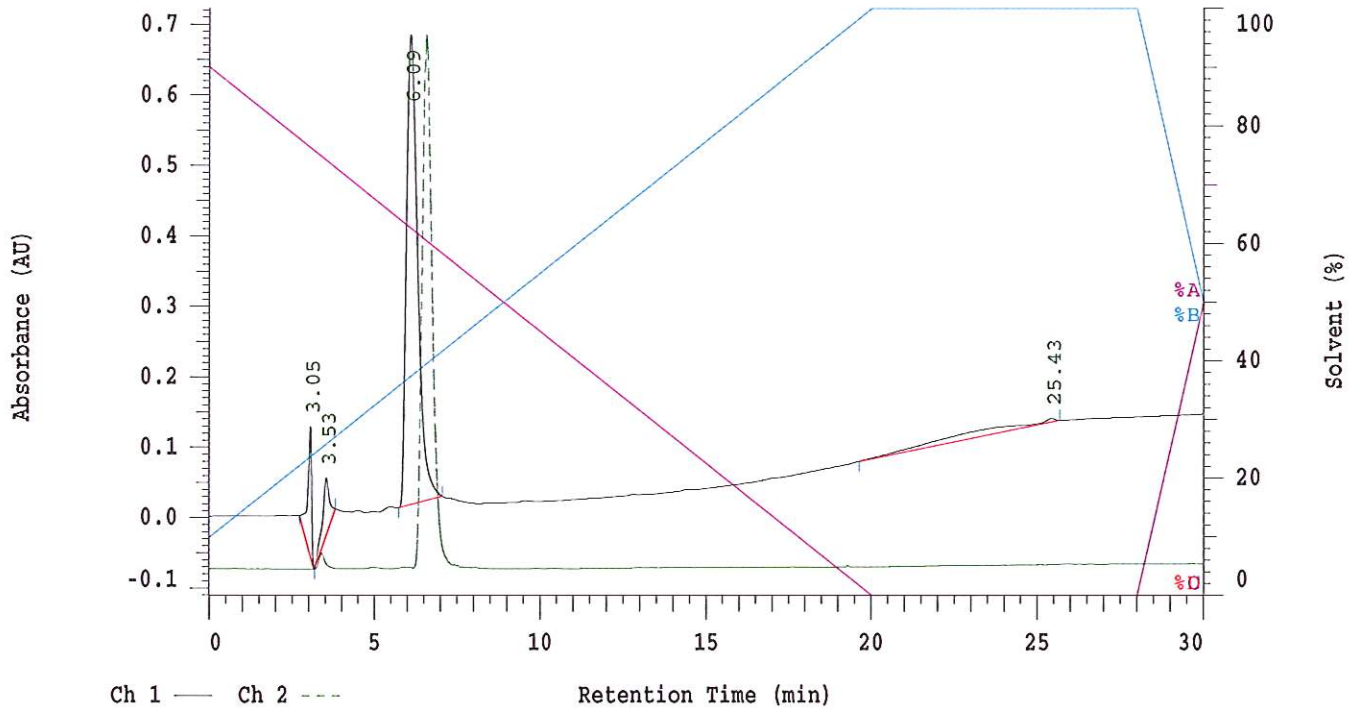
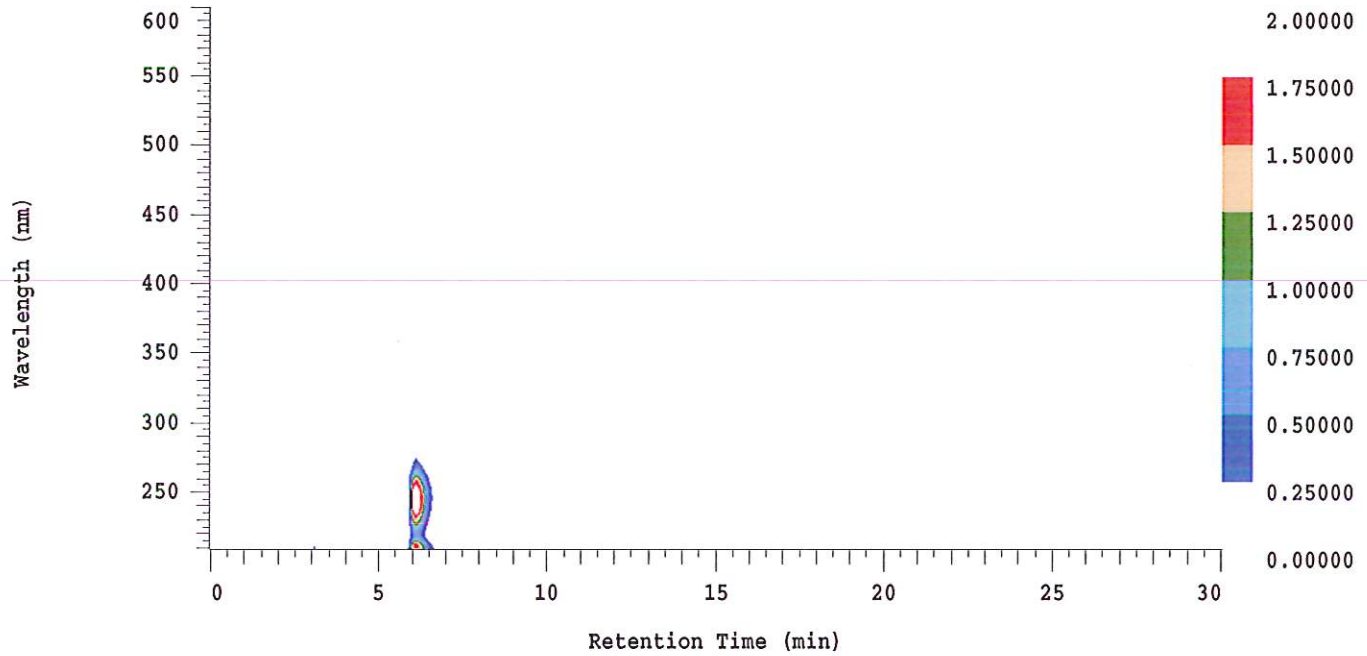
### D-2000 Elite HPLC System Manager Report

Analyzed: 01/24/2013 10:29 PM

Reported: 01/25/2013 08:03 AM

Sample Name: HBOI-358

Sample Description: HBOI-358



Acquisition Method: NIH\_30min\_UV220\_wELSD\_TFA

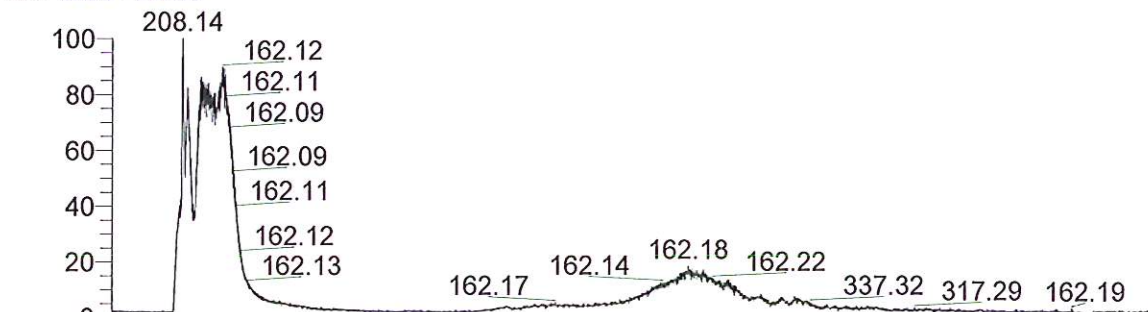
Column Type: Vydac C18

Pump A Solvent A: H2O/5% ACN TFA 0.1%

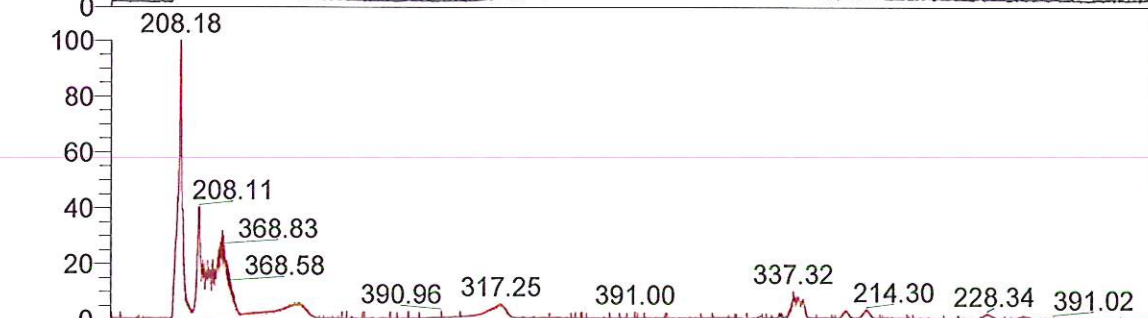
Pump A Solvent B: ACN TFA 0.1%

Method Description:

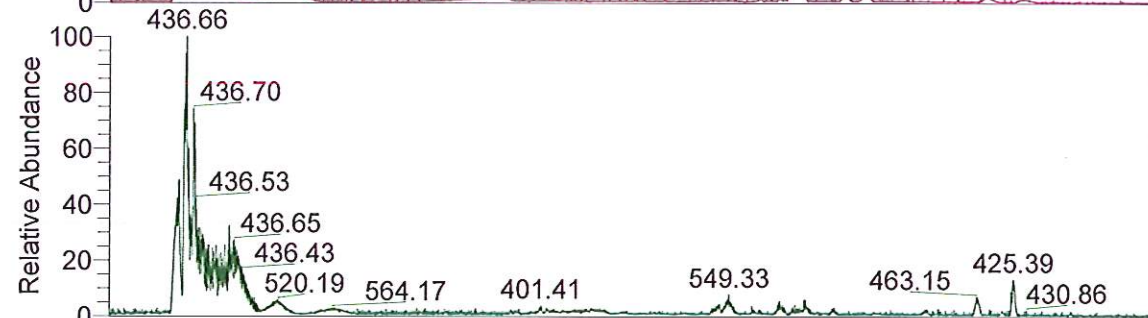
RT: 0.00 - 24.99



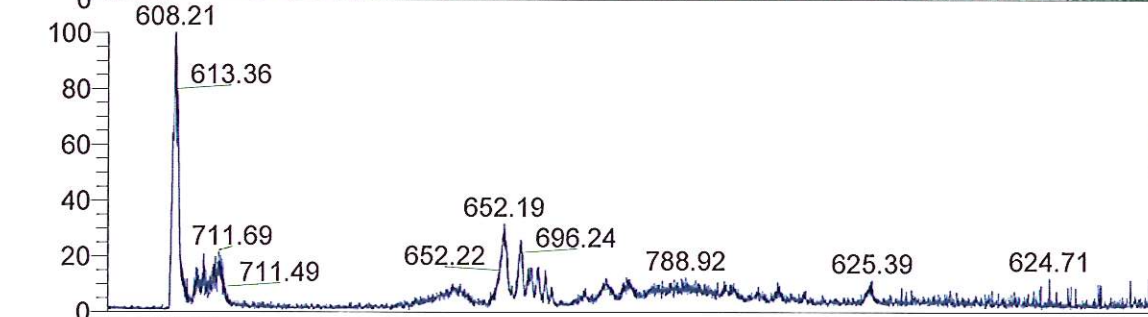
NL: 3.58E6  
 TIC F: ITMS + c ESI Full ms [ 125.00-2000.00] MS  
 BG\_HB\_358\_N\_N\_N\_Trimethyl\_a  
 romatic\_130124110201



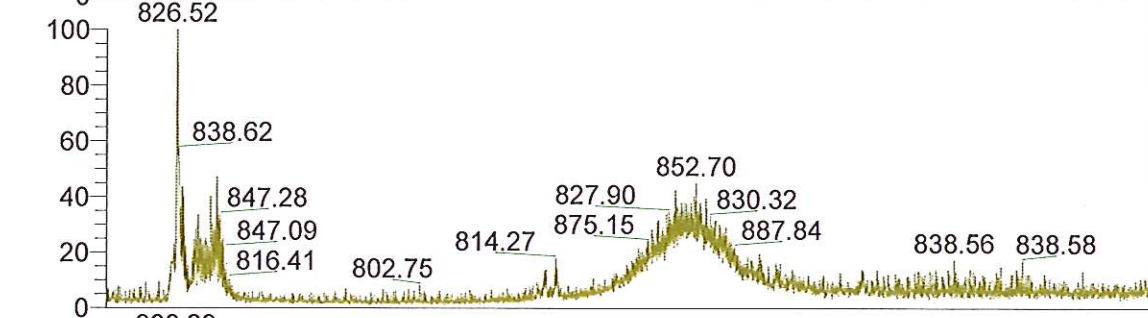
NL: 3.07E5  
 Base Peak m/z= 200.00-400.00 F:  
 ITMS + c ESI Full ms [ 125.00-2000.00] MS  
 BG\_HB\_358\_N\_N\_N\_Trimethyl\_a  
 romatic\_130124110201



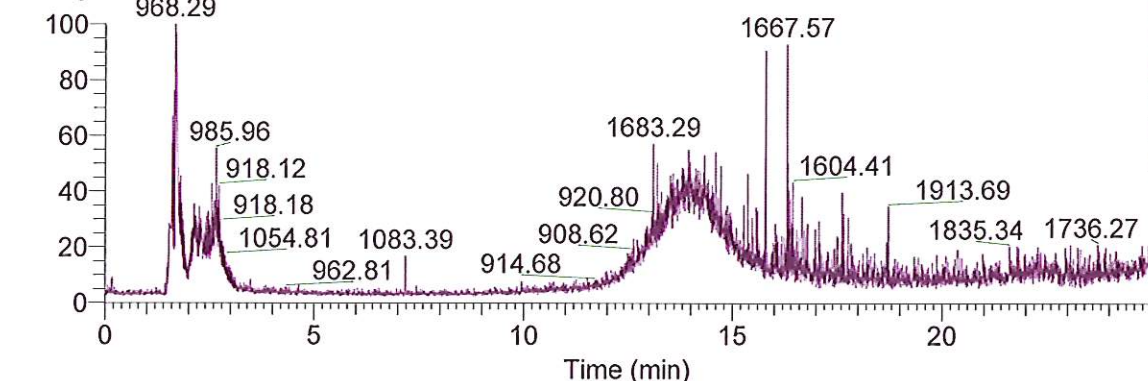
NL: 9.12E4  
 Base Peak m/z= 400.00-600.00 F:  
 ITMS + c ESI Full ms [ 125.00-2000.00] MS  
 BG\_HB\_358\_N\_N\_N\_Trimethyl\_a  
 romatic\_130124110201



NL: 1.61E4  
 Base Peak m/z= 600.00-800.00 F:  
 ITMS + c ESI Full ms [ 125.00-2000.00] MS  
 BG\_HB\_358\_N\_N\_N\_Trimethyl\_a  
 romatic\_130124110201



NL: 5.54E3  
 Base Peak m/z= 800.00-900.00 F:  
 ITMS + c ESI Full ms [ 125.00-2000.00] MS  
 BG\_HB\_358\_N\_N\_N\_Trimethyl\_a  
 romatic\_130124110201



NL: 4.49E3  
 Base Peak m/z= 900.00-2000.00 F:  
 ITMS + c ESI Full ms [ 125.00-2000.00] MS  
 BG\_HB\_358\_N\_N\_N\_Trimethyl\_a  
 romatic\_130124110201

