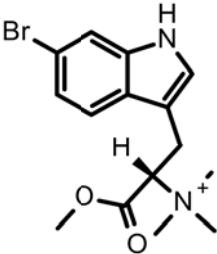


HBOI-356	
Formula Weight : 340.23(1) Exact Mass : 339.070267(2) Formula : C ₁₅ H ₂₀ BrN ₂ O ₂	
methoxy N,N- trimethyl 6-BR- tryptophan	
C ₁₅ H ₂₀ BrN ₂ O ₂	339.07
<i>Corallistes sp. 27-V-91-3-006 RUSF1-1-6</i>	
No publication	

PO NUMBER: PO40657 Bar Code: 1447384

hplc (trace attached)

Method: Vydac C18 Protein and Peptide, 4.6 x 250mm, 10μ

flow 1 ml/min, detection: PDA: UV (extracted at 220 nm, black), ELSD (green dotted)

A: H₂O:CH₃CN (95:5, v/v), B: CH₃CN

t=0 min A:B (90:10, v/v), t=20 min (100%B) , t=28 min (100%B)

LC-MS (spectrum attached)

Method: Vydac C18 Protein and Peptide, 2.1x150 mm, flow 0.2 ml/min

A: H₂O (0.1% formic acid), B: CH₃CN (0.1% formic acid)

t= 0 min A:B (90:10, v/v), t=15 min (100%B), t=21 min (100%B), t=22.1 min A:B(90:10, v/v)

using a linear gradient

¹H (600 MHz) CDCl₃ CD₃OD (Methanol-d₄) CDCl₃/CD₃OD

¹³C (150 MHz) CDCl₃ CD₃OD (Methanol-d₄) CDCl₃/CD₃OD

solubility CHCl₃/MeOH (9:1) MeOH DMSO

estimated purity >90%

sample weight 6.8 mg

For further information contact:

Amy E. Wright, PhD, HBOI@FAU, 5600 US 1, North, Fort Pierce, FL 34946

awrigh33@hboi.fau.edu, 772-242-2459

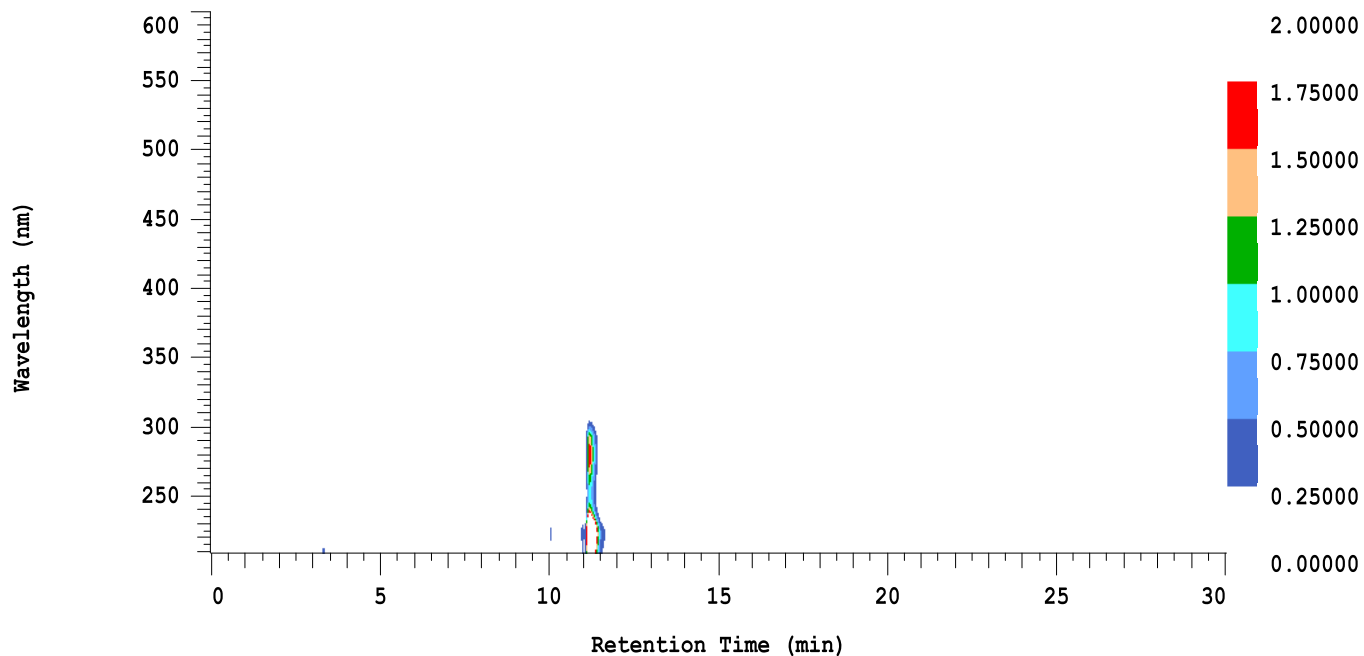
Date: _____

D-2000 Elite HPLC System Manager Report

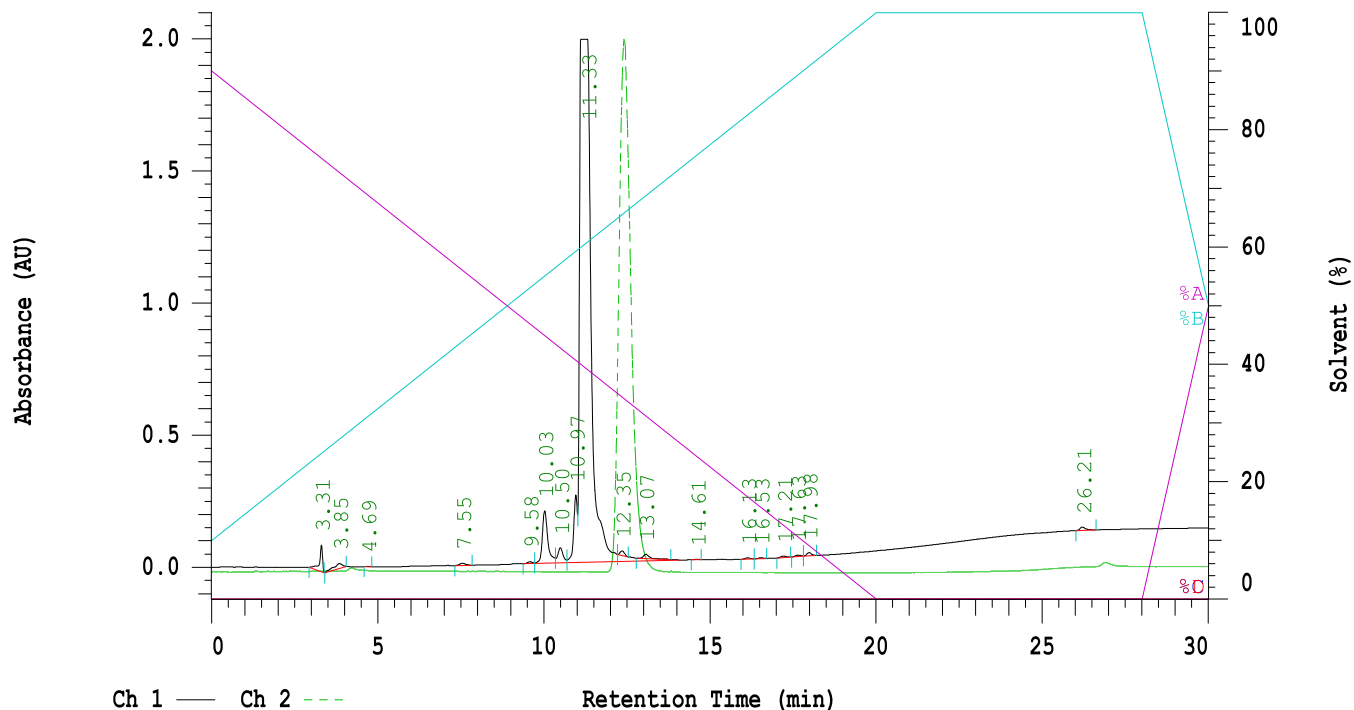
Analyzed: 03/18/2014 02:49 PM Reported: 03/18/2014 03:43 PM

Sample Name: RusF01-01-06

Sample Description: 27-V-91-3-006-Corallistes Typus



Channel 1 Chrom Type: Fixed WL Chromatogram, 230 nm



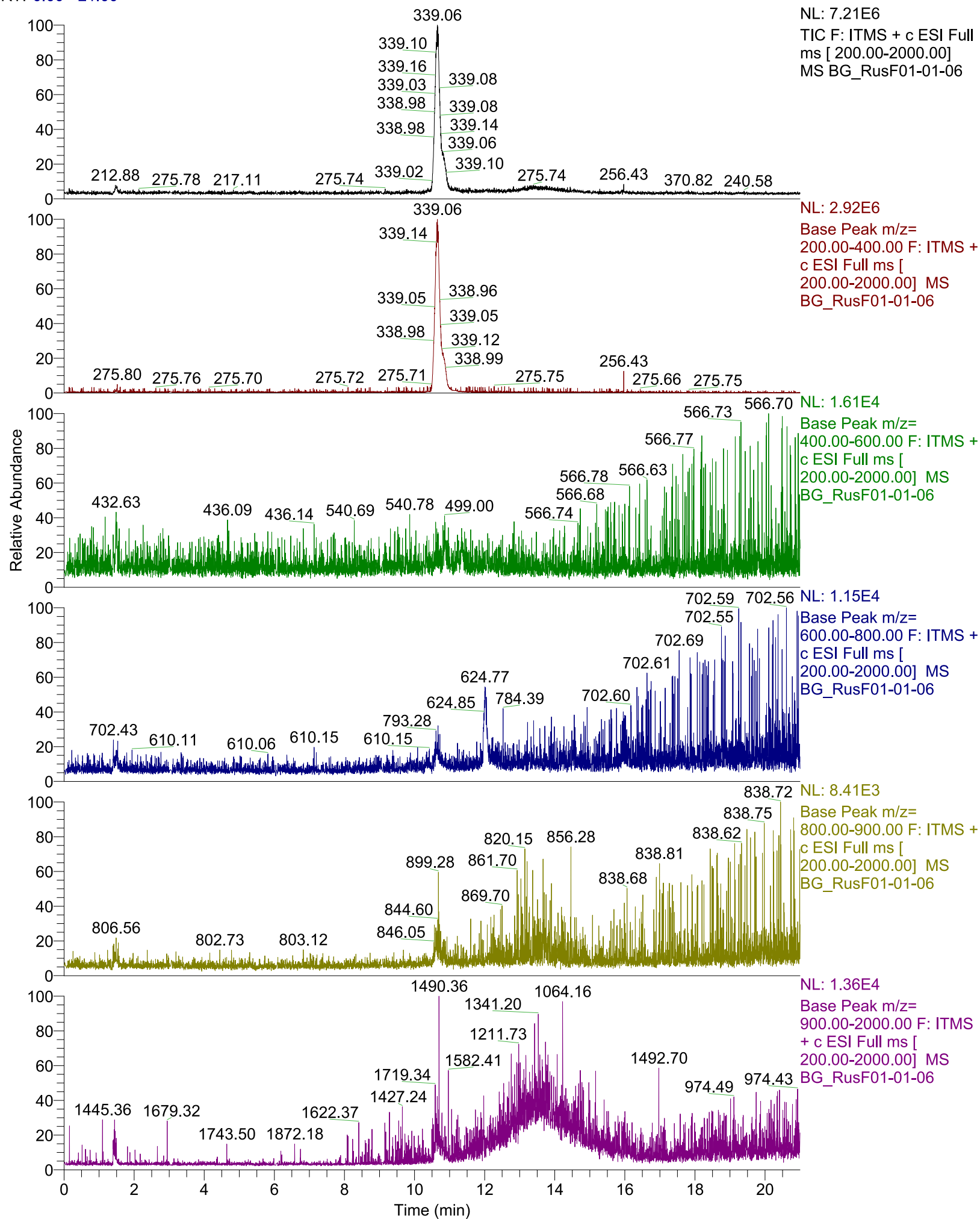
Acquisition Method: autosampler_30min_wELSD_TFA

Column Type: Vydac C18

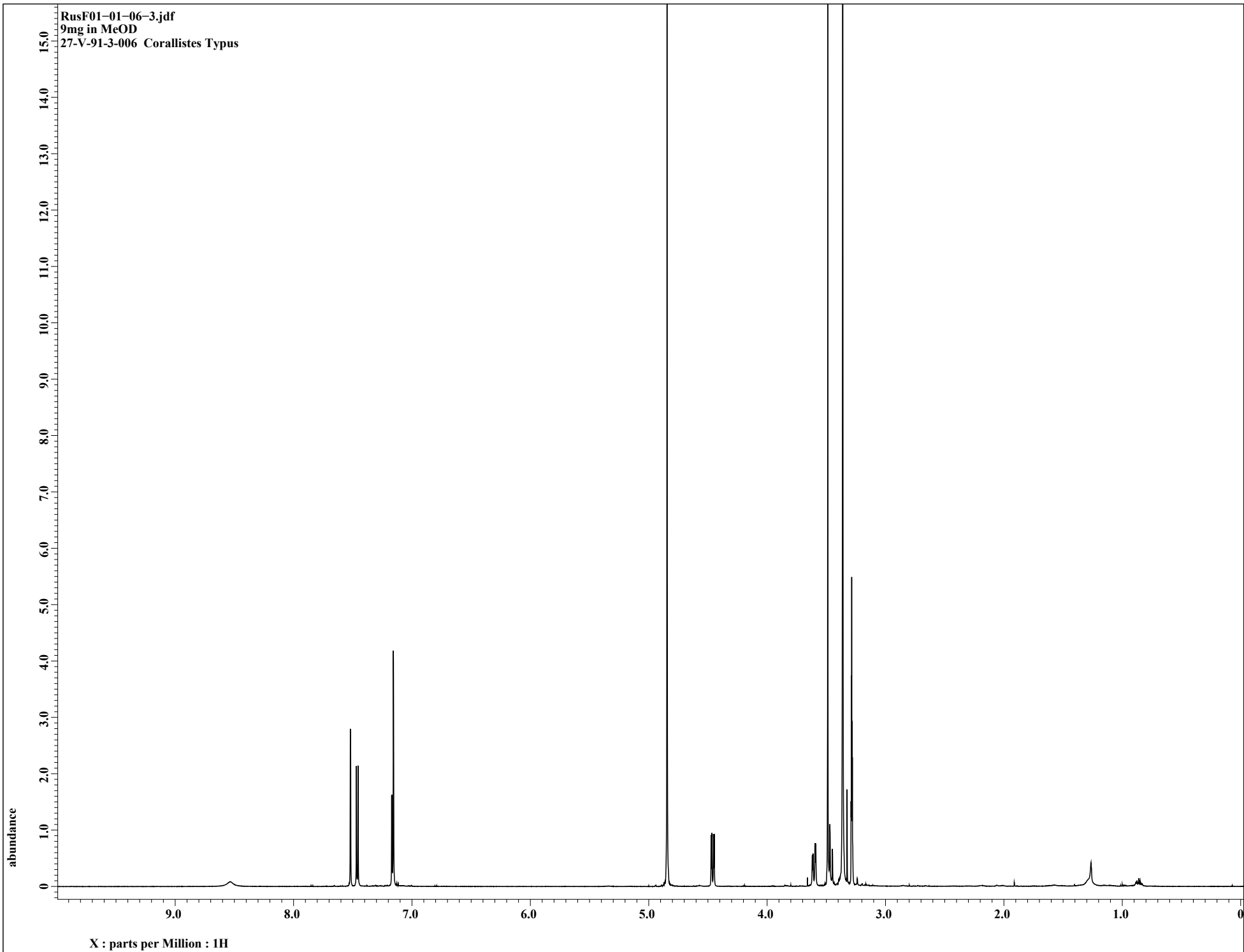
Pump A Solvent A: H2O/5% ACN TFA 0.1% Pump A Solvent B: ACN TFA 0.1%

Method Description:

RT: 0.00 - 21.00



RusF01-01-06-3.jdf
9mg in MeOD
27-V-91-3-006 Corallistes Typus



RusF01-01-06-3.jdf
27-V-91-3-006 Corallistes Typus
single pulse decoupled gated NOE 9mg in MeOD

