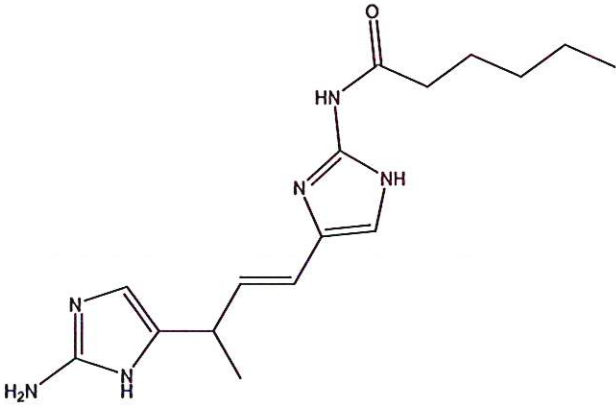


HBOI-354			
MCOO1-53-4 IMIDAZOLE			
$C_{16}H_{24}N_6O$		316.41	
<i>Aphrocallistes</i> sp.			
manuscript in prep			

isolation scheme (Visio)

hplc method (trace attached)

Method: Vydac C18 Protein and Peptide, 4.6 x 250mm, 10 $\mu$

flow 1 ml/min, detection: PDA: UV (extracted at 220 nm, black); ELSD (green dotted)

A: H<sub>2</sub>O:CH<sub>3</sub>CN (95:5, v/v, 0.1% TFA), B: CH<sub>3</sub>CN (0.1% TFA)

t=0 min A:B (90:10, v/v), t=20 min (100%B) , t=28 min (100%B)

LC-MS (spectrum attached)

Method: Vydac C18 Protein and Peptide, 2.1x150 mm, flow 0.2 ml/min

A: H<sub>2</sub>O(0.1% formic acid), B:CH<sub>3</sub>CN(0.1% formic acid)

t= 0 min A:B (90:10, v/v), t=15 min (100%B), t=21 min (100%B), t=22.1 min A:B(90:10, v/v)  
using a linear gradient

<sup>1</sup>H (600 MHz)       CDCl<sub>3</sub>       CD<sub>3</sub>OD (Methanol-d<sub>4</sub>)       CDCl<sub>3</sub>/CD<sub>3</sub>OD

<sup>13</sup>C (150 MHz)       CDCl<sub>3</sub>       CD<sub>3</sub>OD (Methanol-d<sub>4</sub>)       CDCl<sub>3</sub>/CD<sub>3</sub>OD

solubility       CHCl<sub>3</sub>/MeOH (9:1)       MeOH       DMSO

estimated purity \_90\_%

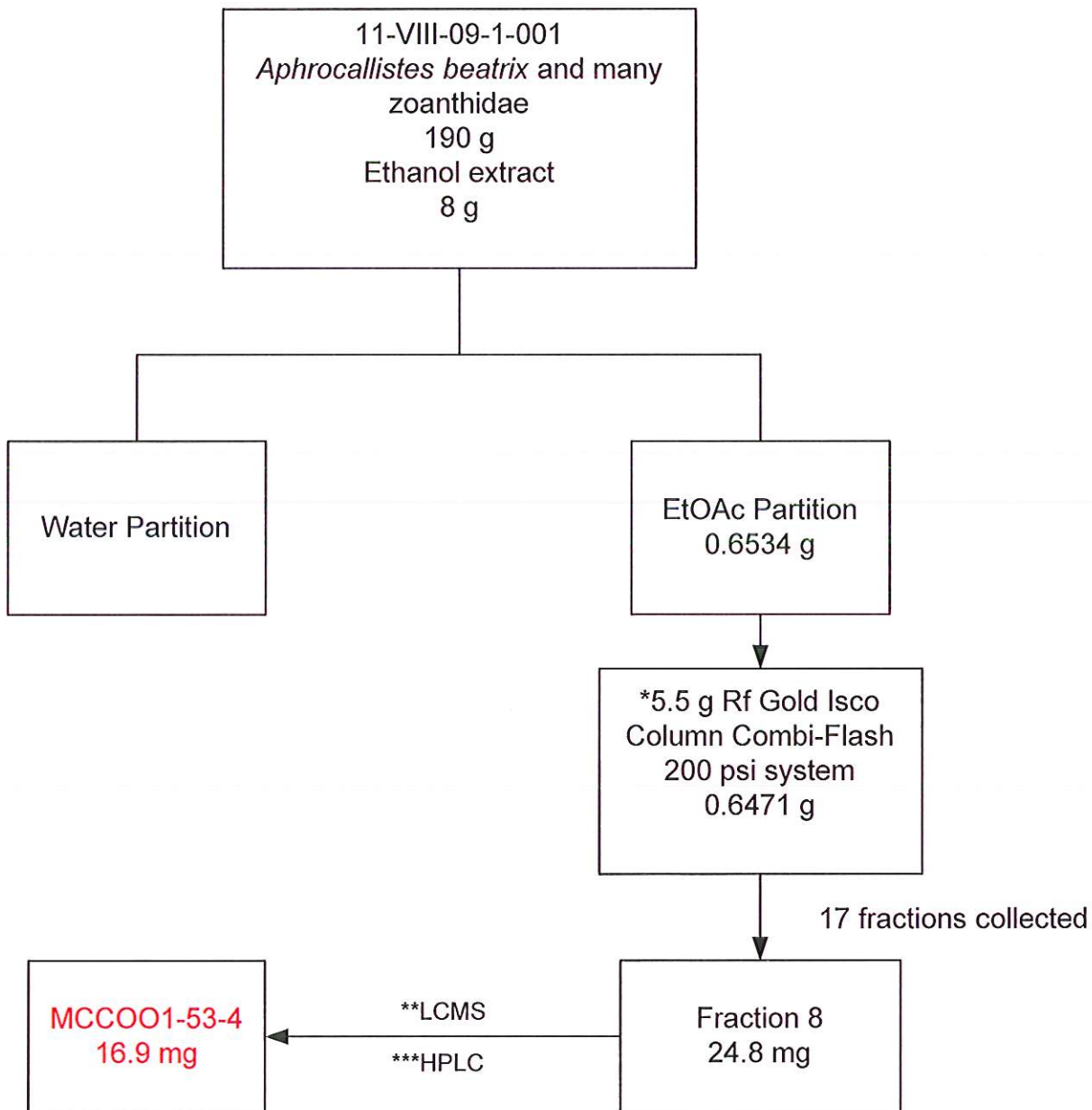
sample weight \_19.5\_mg

For further information contact:

Amy E. Wright, PhD, HBOI@FAU, 5600 US 1, North, Fort Pierce, FL 34946

[awrigh33@hboi.fau.edu](mailto:awrigh33@hboi.fau.edu), 772-242-2459

Date: 1/28/13



\*Combi-Flash

A: H<sub>2</sub>O, B: CH<sub>3</sub>CN

t=0 min (100%A), t=1 min (100%A), t=10.5 min A:B (70:30), t=17 min (100% B)

\*\*LC/MS

A: H<sub>2</sub>O:CH<sub>3</sub>CN (95:5) - 0.1% TFA B: CH<sub>3</sub>CN - 0.1% TFA, 15 ml/min

t=0 min A:B (80:20), t= 14 min (100% B), t=15 min A:B (50:50)

\*\*\*HPLC

A: H<sub>2</sub>O:CH<sub>3</sub>CN (95:5) - 0.1% TFA B: CH<sub>3</sub>CN - 0.1% TFA

isocratic A:B (80:20), 2.8 ml/min, 12 min

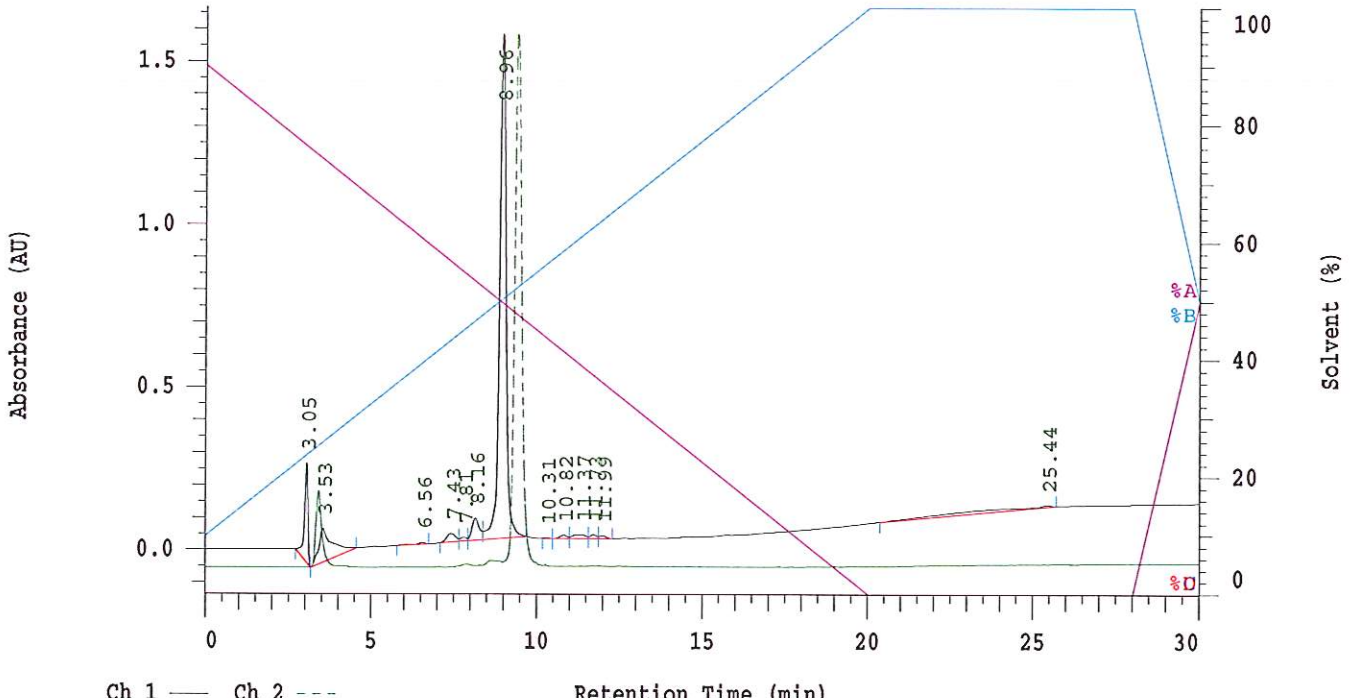
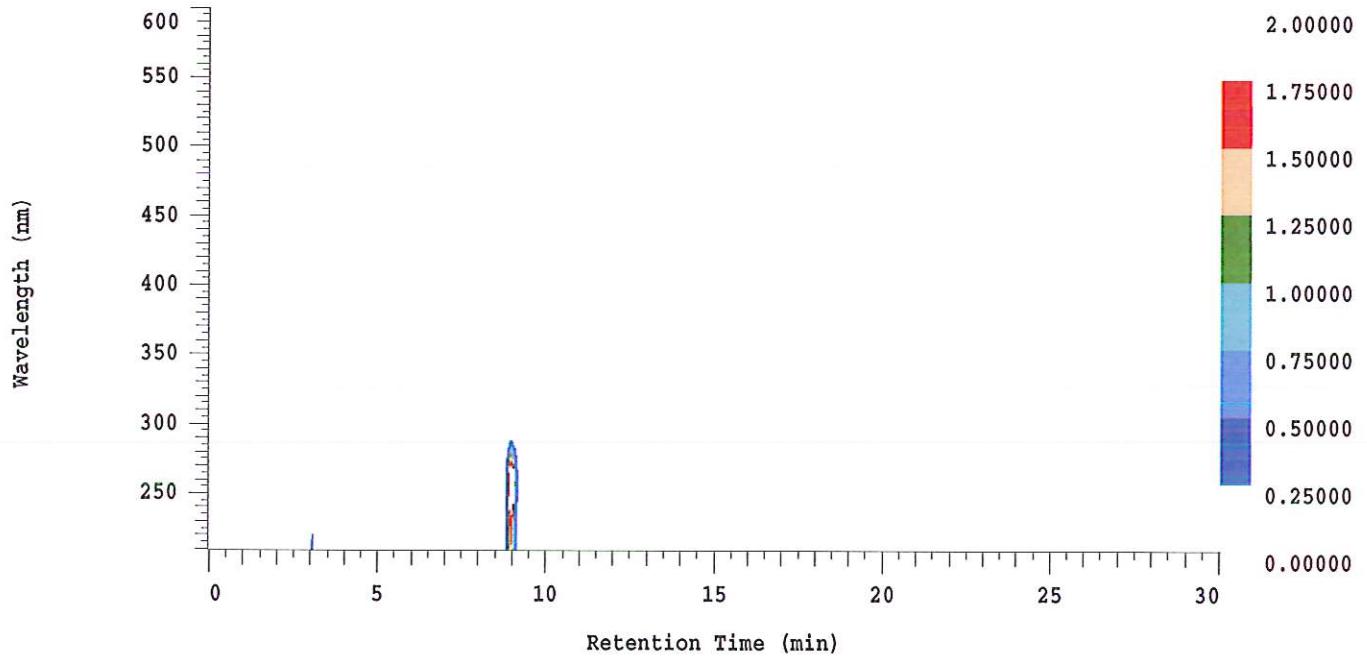
### D-2000 Elite HPLC System Manager Report

Analyzed: 01/25/2013 01:40 AM

Reported: 01/25/2013 08:04 AM

Sample Name: HBOI-354

Sample Description: HBOI-354



Acquisition Method: NIH\_30min\_UV220\_wELSD\_TFA

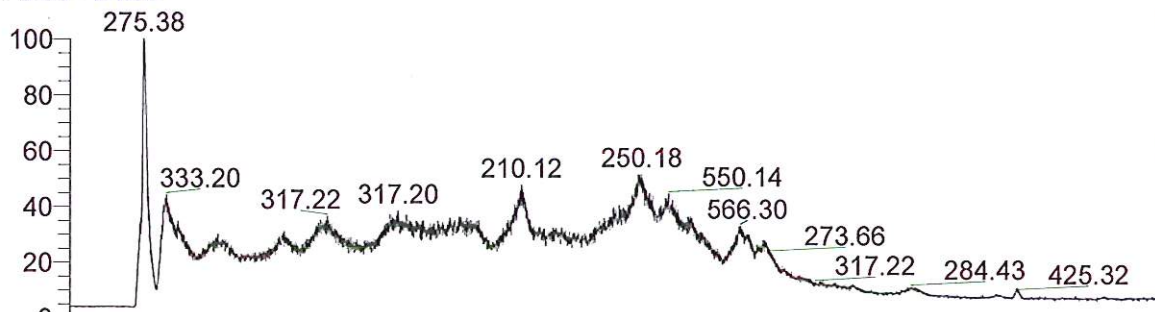
Column Type: Vydac C18

Pump A Solvent A: H2O/5% ACN TFA 0.1%

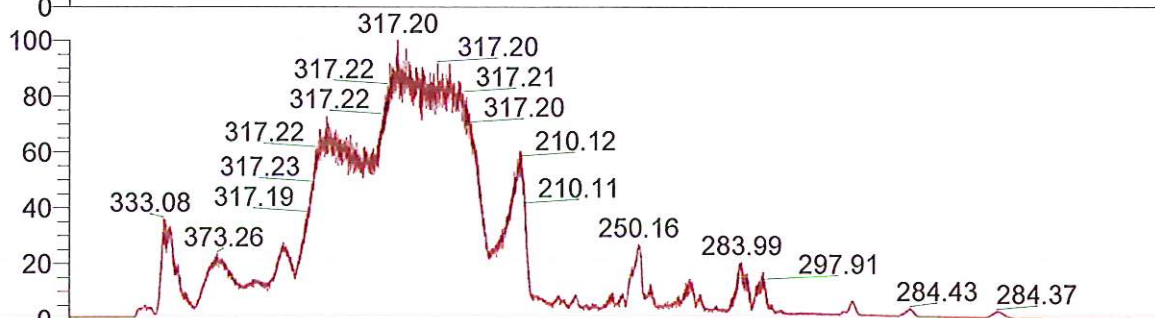
Pump A Solvent B: ACN TFA 0.1%

Method Description:

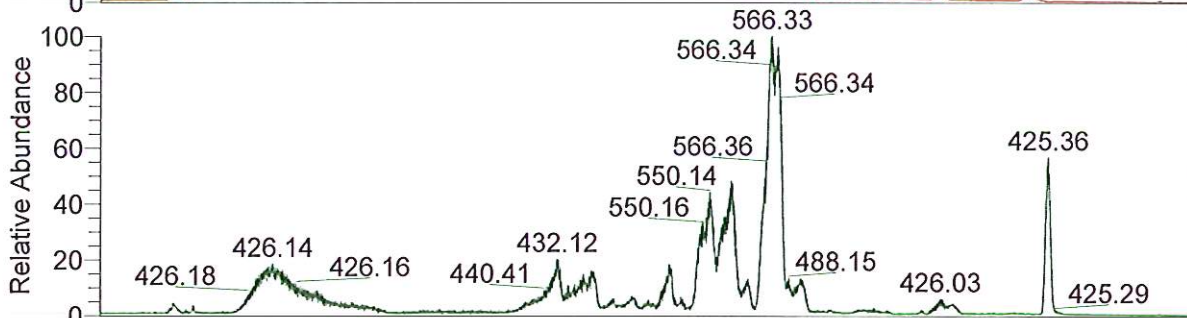
RT: 0.00 - 24.99



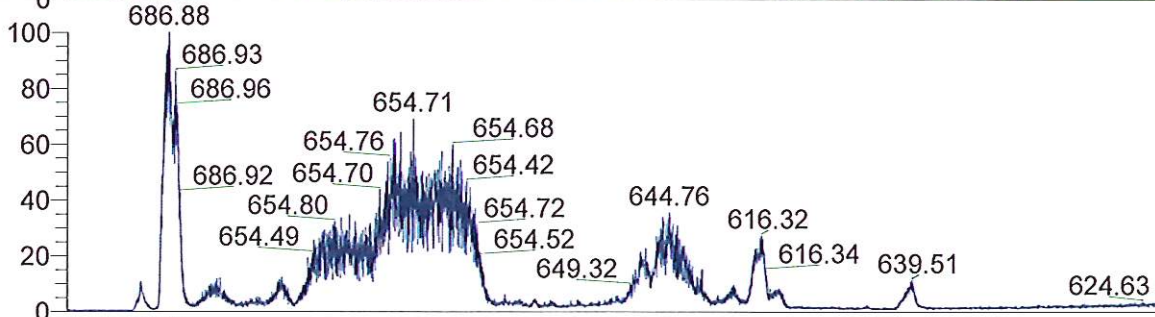
NL: 5.73E6  
 TIC F: ITMS + c ESI Full ms [ 200.00-2000.00] MS  
 BG\_HB\_354\_MCOO1\_53\_4\_i  
 midazole\_2



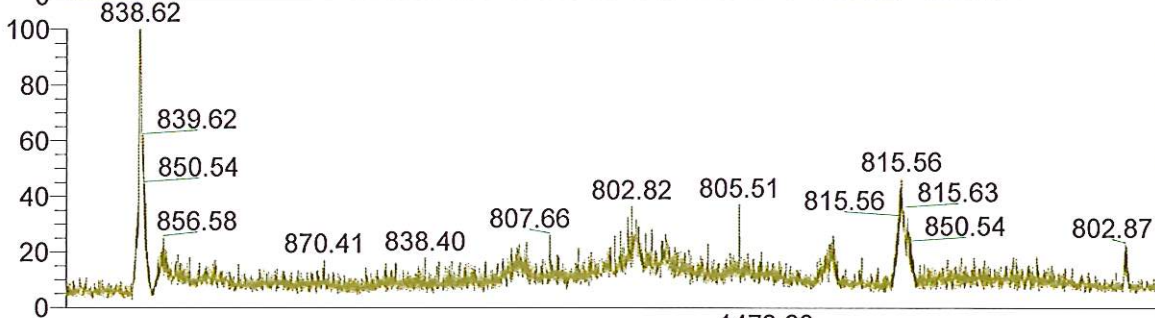
NL: 1.06E6  
 Base Peak m/z=  
 200.00-400.00 F: ITMS + c  
 ESI Full ms [ 200.00-2000.00]  
 MS  
 BG\_HB\_354\_MCOO1\_53\_4\_i  
 midazole\_2



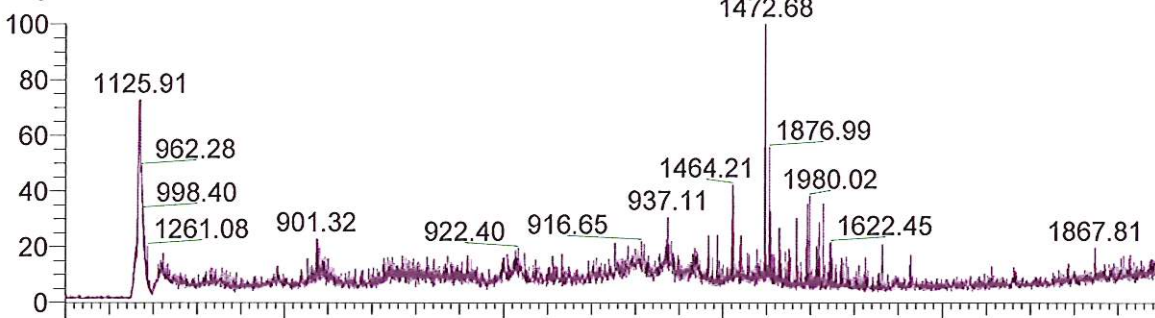
NL: 2.68E5  
 Base Peak m/z=  
 400.00-600.00 F: ITMS + c  
 ESI Full ms [ 200.00-2000.00]  
 MS  
 BG\_HB\_354\_MCOO1\_53\_4\_i  
 midazole\_2



NL: 8.41E4  
 Base Peak m/z=  
 600.00-800.00 F: ITMS + c  
 ESI Full ms [ 200.00-2000.00]  
 MS  
 BG\_HB\_354\_MCOO1\_53\_4\_i  
 midazole\_2

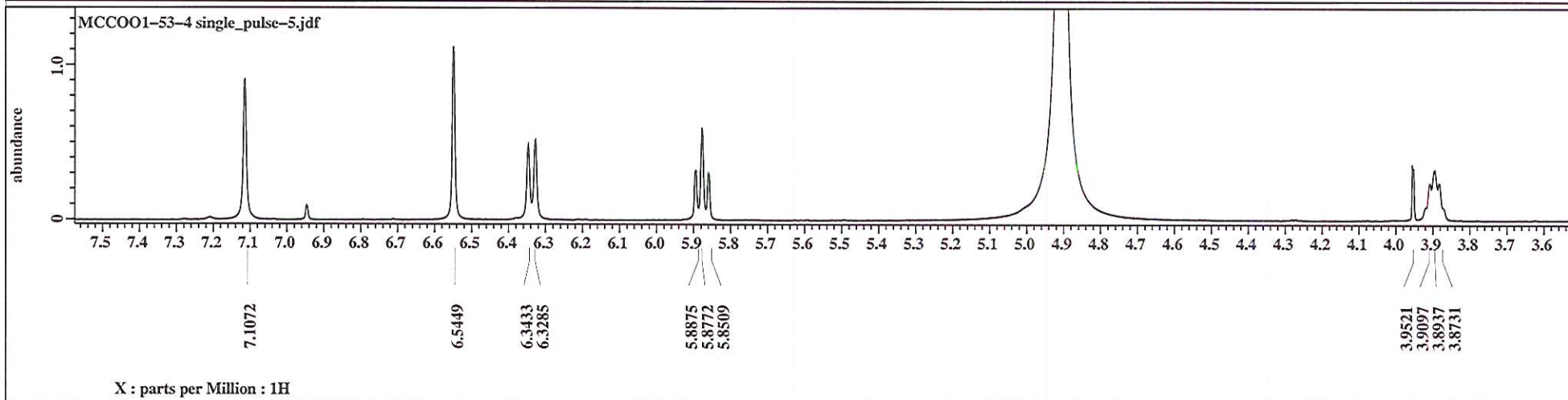
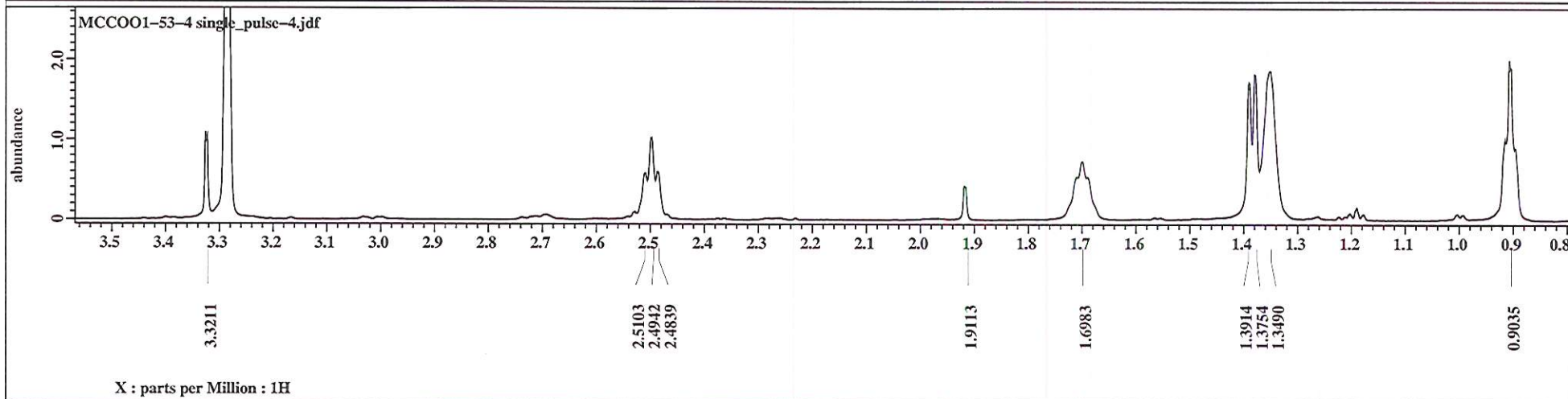
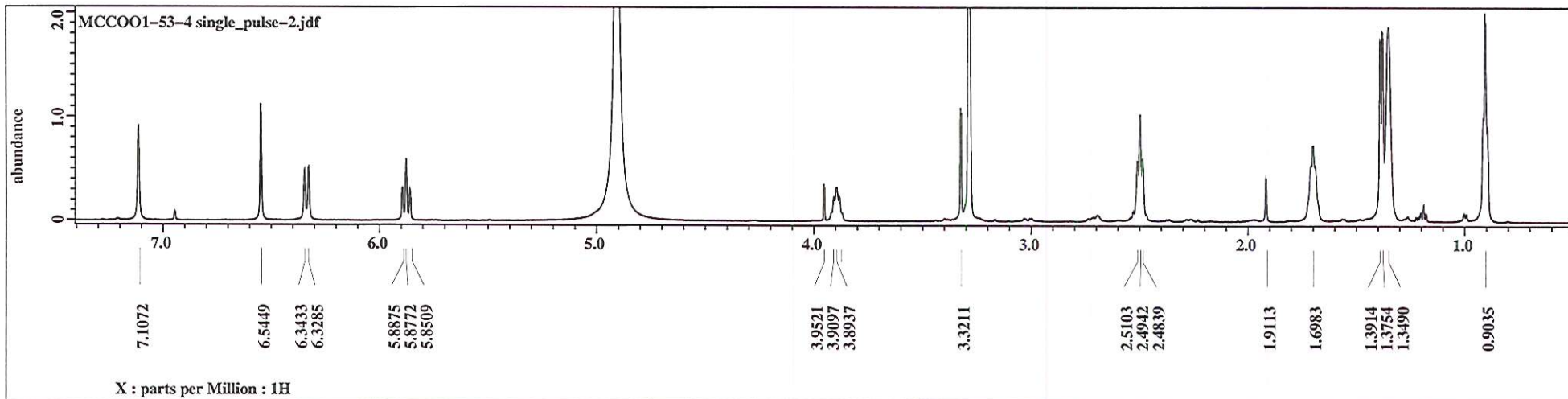


NL: 7.13E3  
 Base Peak m/z=  
 800.00-900.00 F: ITMS + c  
 ESI Full ms [ 200.00-2000.00]  
 MS  
 BG\_HB\_354\_MCOO1\_53\_4\_i  
 midazole\_2



NL: 9.33E3  
 Base Peak m/z=  
 900.00-2000.00 F: ITMS + c  
 ESI Full ms [ 200.00-2000.00]  
 MS  
 BG\_HB\_354\_MCOO1\_53\_4\_i  
 midazole\_2

Time (min)



MCC001-53-4

