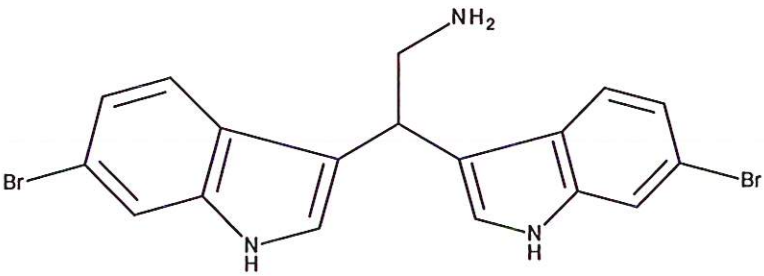


HBOI-229		
2, 2-BIS-(6-Br-3-INDOLYL) ETHYLAMINE		
$C_{18}H_{15}Br_2N_3$	433.15	
<i>Spongisorites</i> sp.		
Fahey et al, 1991, <i>J. Nat. Prod.</i> 54: 564		

hplc (trace attached)

Method: Vydac C18 Protein and Peptide, 4.6 x 250mm, 10 μ
 flow 1 ml/min, detection: PDA: UV (extracted at 220 nm, black); ELSD (green dotted)
 A: H₂O:CH₃CN (95:5, v/v, 0.1% TFA), B: CH₃CN (0.1% TFA)
 t=0 min A:B (90:10, v/v), t=20 min (100%B) , t=28 min (100%B)

LC-MS (spectrum attached)

Method: Method: Vydac C18 Protein and Peptide, 2.1x150 mm, flow 0.2 ml/min
 A: H₂O (0.1% formic acid), B:CH₃CN (0.1% formic acid)
 t= 0 min A:B (90:10, v/v), t=15 min (100%B), t=21 min (100%B), t=22.1 min A:B (90:10, v/v)
 using a linear gradient

¹H (600 MHz) CDCl₃ CD₃OD (Methanol-d₄) CDCl₃/CD₃OD

¹³C (150 MHz) CDCl₃ CD₃OD (Methanol-d₄) CDCl₃/CD₃OD

solubility CHCl₃/MeOH (9:1) MeOH DMSO

estimated purity >90%

sample weight __19.3__mg

For further information contact:

Amy E. Wright, PhD, HBOI@FAU, 5600 US 1, North, Fort Pierce, FL 34946
awrigh33@hboi.fau.edu, 72-242-2459

Date: 1/28/13

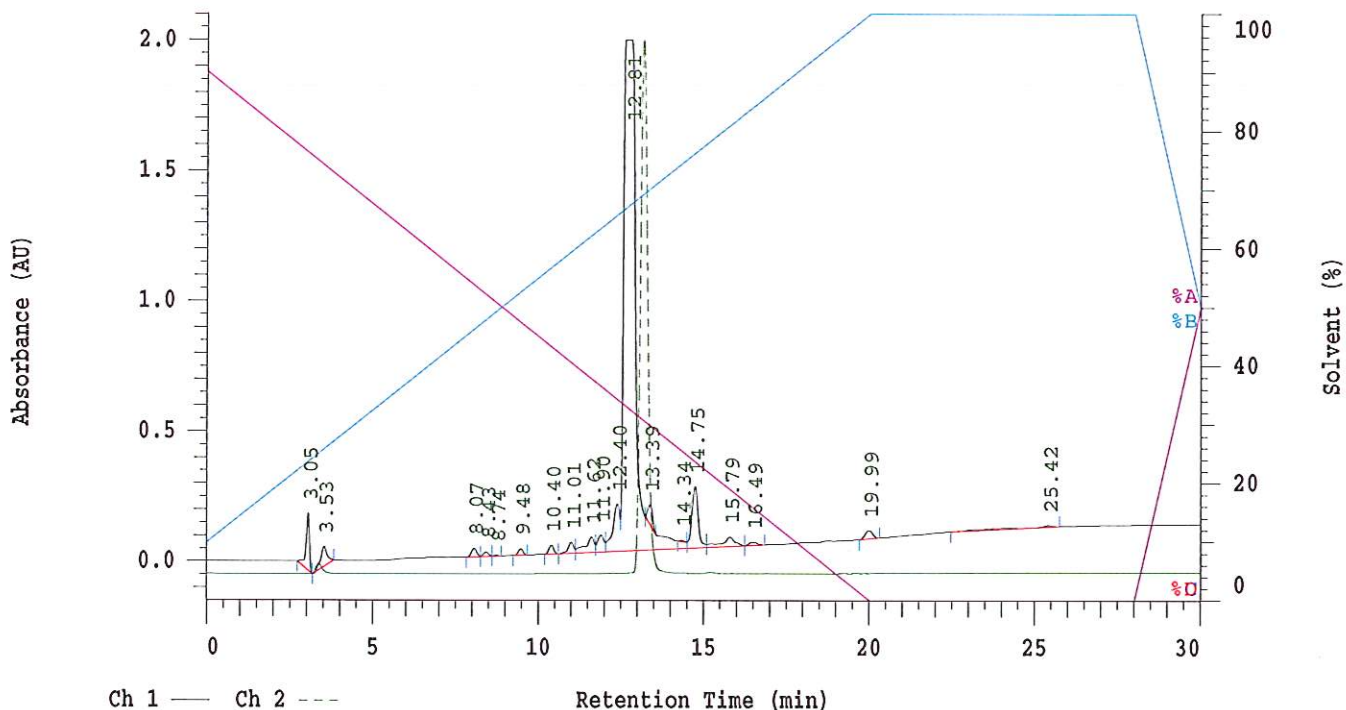
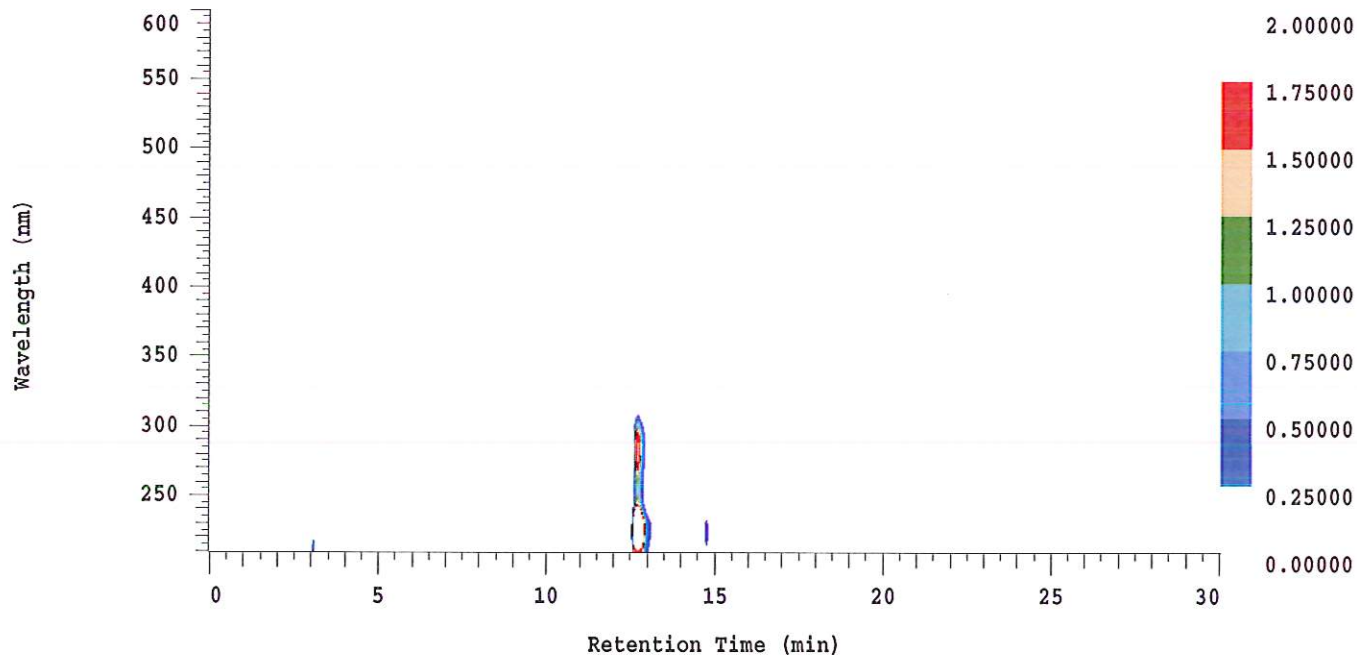
D-2000 Elite HPLC System Manager Report

Analyzed: 01/24/2013 09:13 PM

Reported: 01/25/2013 08:03 AM

Sample Name: HBOI-229

Sample Description: HBOI-229



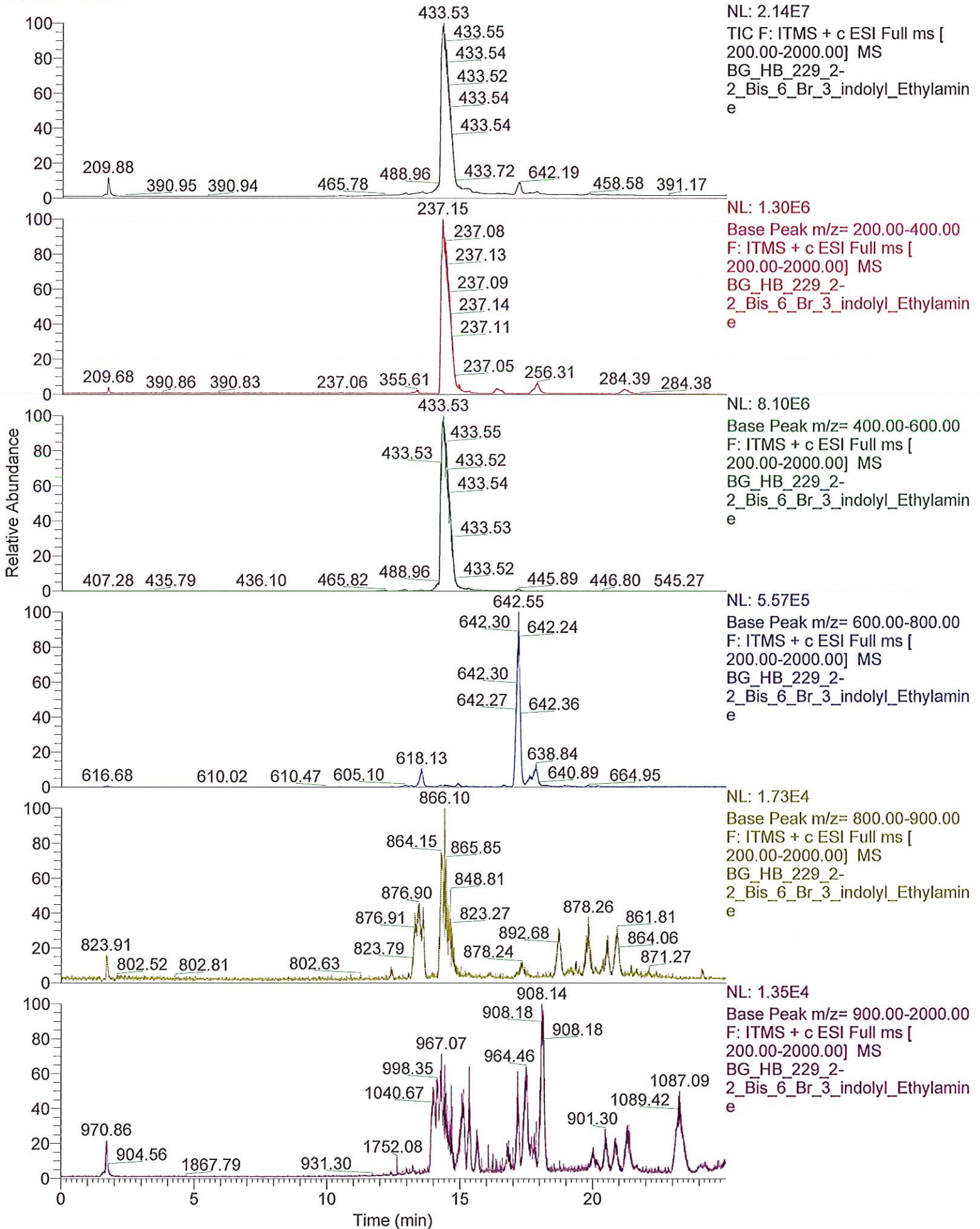
Acquisition Method: NIH_30min_UV220_wELSD_TFA

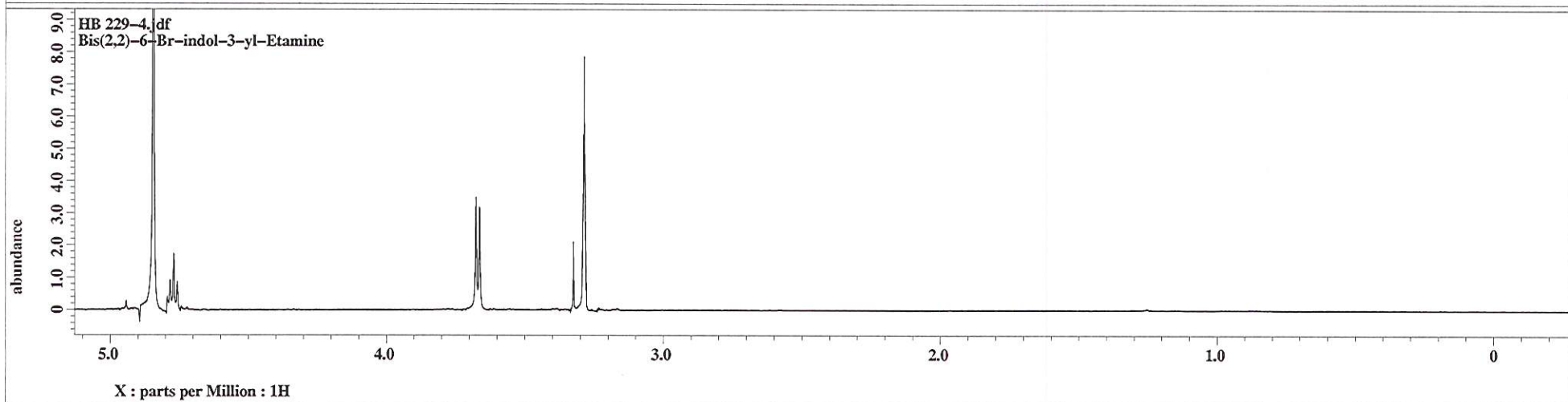
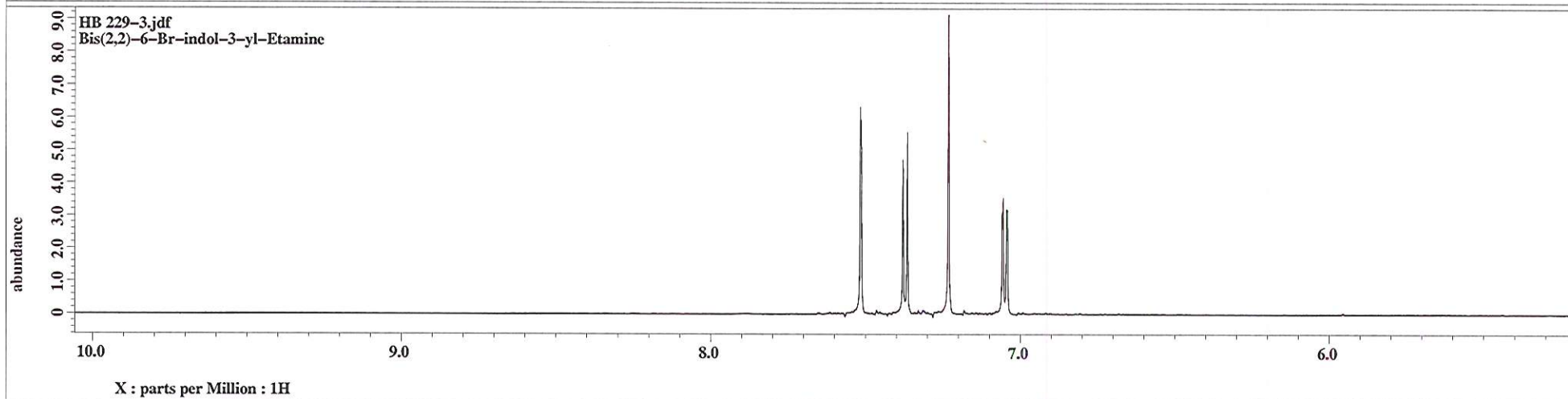
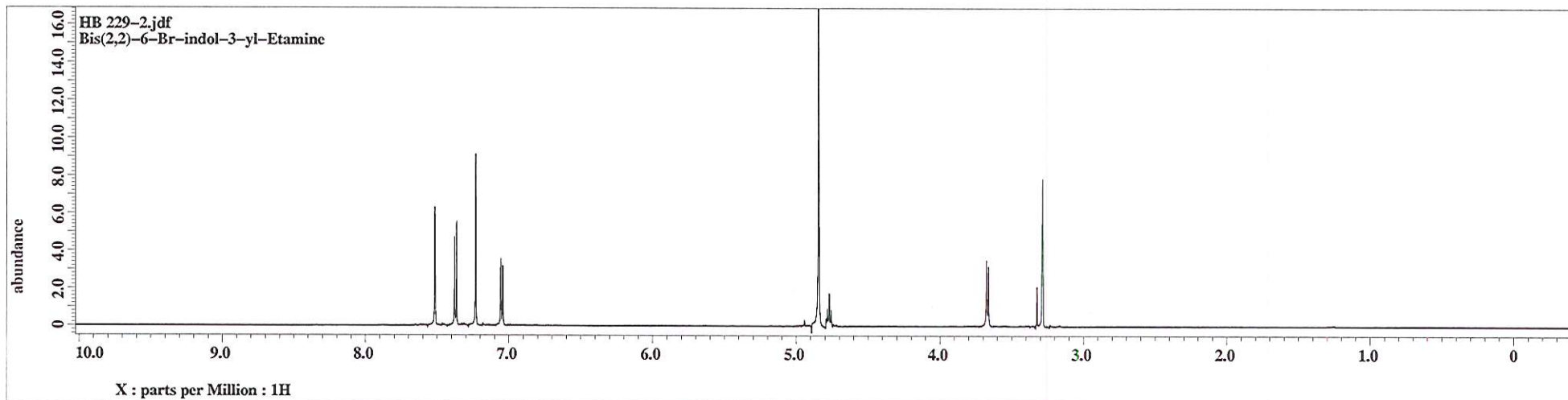
Column Type: Vydac C18

Pump A Solvent A: H2O/5% ACN TFA 0.1% Pump A Solvent B: ACN TFA 0.1%

Method Description:

RT: 0.00 - 24.99





HB229_Bix(2,2)6-Br-Indole-3yl-Et-amine_CARBON-4.jdf
HB229_Bix(2,2)6-Br-Indole-3yl-Et-amine_QC MeOD

