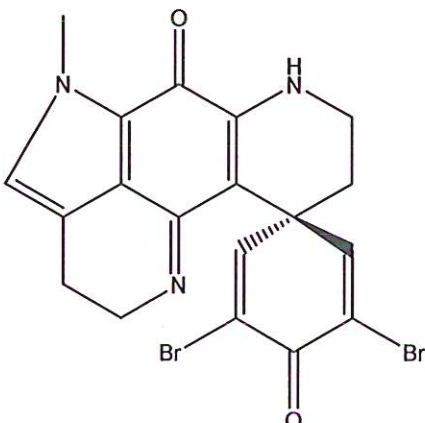


HBOI-224		
	DISCORHABDIN P	
	$C_{19}H_{15}Br_2N_3O_2$	477.149
	<i>Batzella</i> sp.	
	Gunasekera, McCarthy, Longley, Pomponi, Wright, Lobkovsky, and Clardy, 1999, <i>J. Nat. Prod.</i> , 62(1):173-175	

hplc (trace attached)

Method: Vydac C18 Protein and Peptide, 4.6 x 250mm, 10 $\mu$   
 flow 1 ml/min, detection: PDA: UV (extracted at 220 nm, black), ELSD (green dotted)  
 A: H<sub>2</sub>O:CH<sub>3</sub>CN (95:5, v/v, 0.1% TFA), B: CH<sub>3</sub>CN (0.1% TFA)  
 t=0 min A:B (90:10, v/v), t=20 min (100%B), t=28 min (100%B)

LC-MS (spectrum attached)

Method: Vydac C18 Protein and Peptide, 2.1x150 mm, flow 0.2 ml/min  
 A: H<sub>2</sub>O (0.1% formic acid), B: CH<sub>3</sub>CN (0.1% formic acid)  
 t= 0 min A:B (90:10, v/v), t=15 min (100%B), t=21 min (100%B), t=22 min A:B(90:10, v/v)  
 using a linear gradient

<sup>1</sup>H (600 MHz)       CDCl<sub>3</sub>       CD<sub>3</sub>OD (Methanol-d<sub>4</sub>)       CDCl<sub>3</sub>/CD<sub>3</sub>OD

<sup>13</sup>C (150 MHz)       CDCl<sub>3</sub>       CD<sub>3</sub>OD (Methanol-d<sub>4</sub>)       CDCl<sub>3</sub>/CD<sub>3</sub>OD

solubility       CHCl<sub>3</sub>/MeOH (9:1)       MeOH       DMSO

estimated purity >90%

sample weight 19.7 mg

For further information contact:

Amy E. Wright, PhD, HBOI@FAU, 5600 US 1, North, Fort Pierce, FL 34946  
[awrigh33@hboi.fau.edu](mailto:awrigh33@hboi.fau.edu), 772-242-2459

Date: 7/15/13

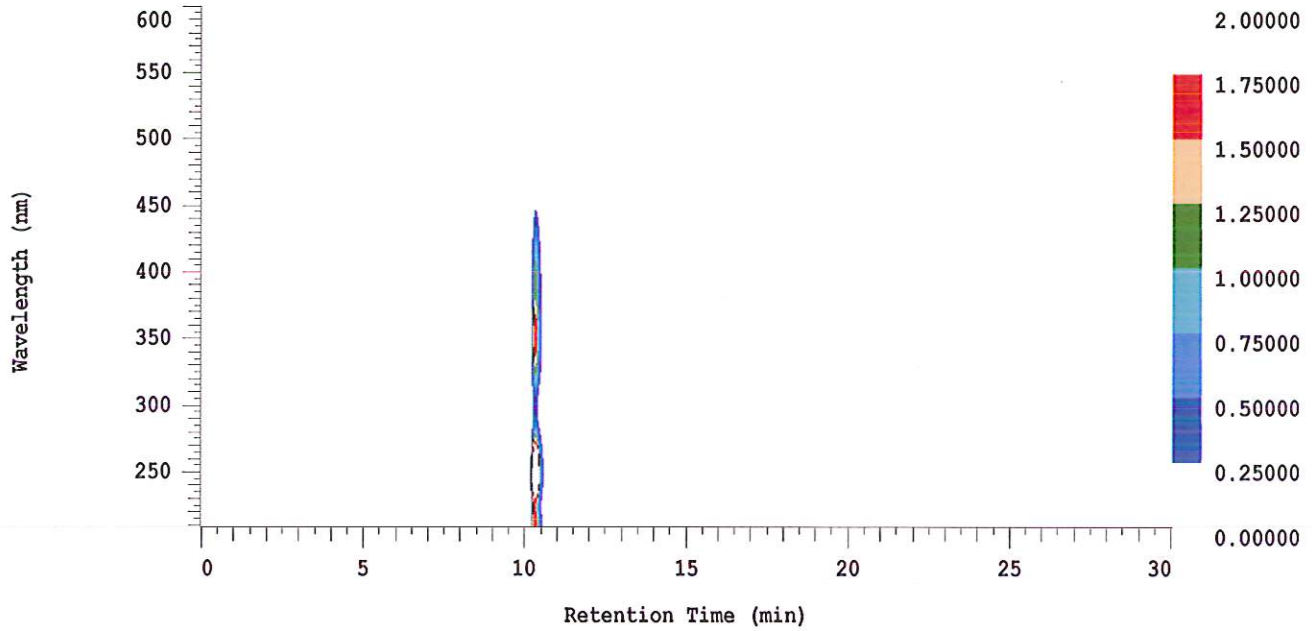
### D-2000 Elite HPLC System Manager Report

Analyzed: 07/05/2013 12:27 PM

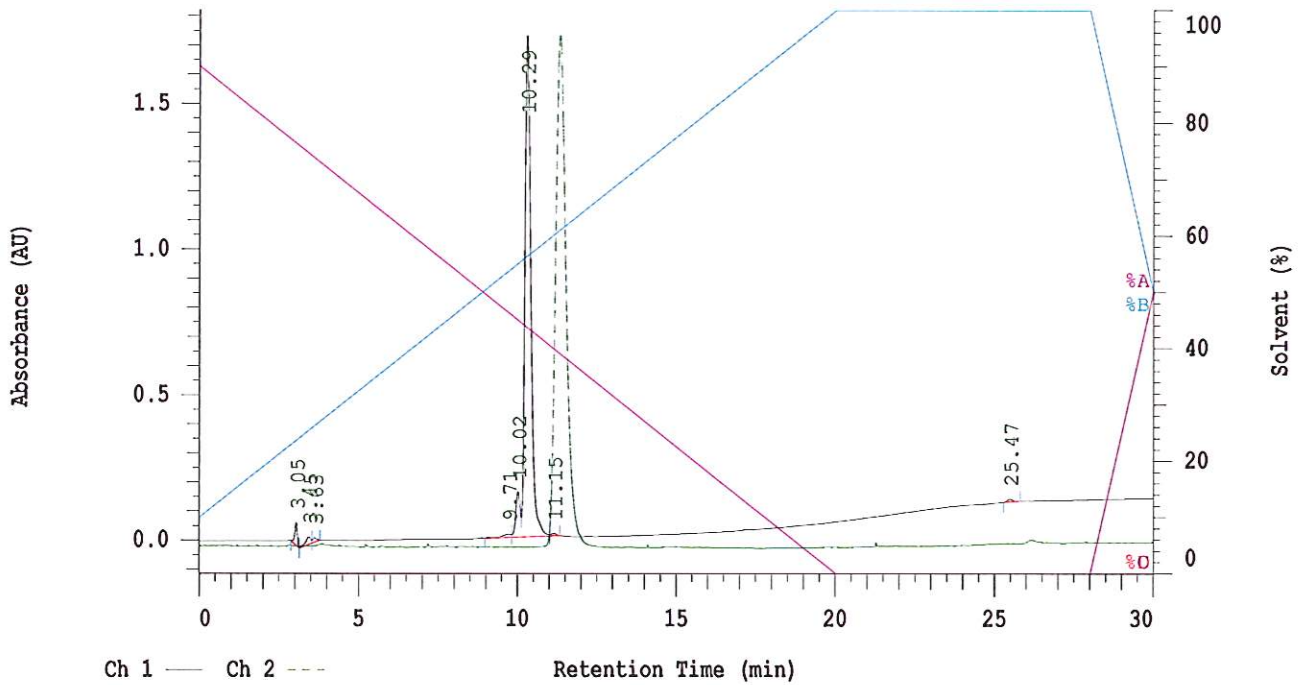
Reported: 07/05/2013 01:38 PM

Sample Name: Discorhabdin P

Sample Description: Discorhabdin P HB 224



Channel 1 Chrom Type: Fixed WL Chromatogram, 230 nm



Acquisition Method: autosampler\_30min\_wELSD\_TFA

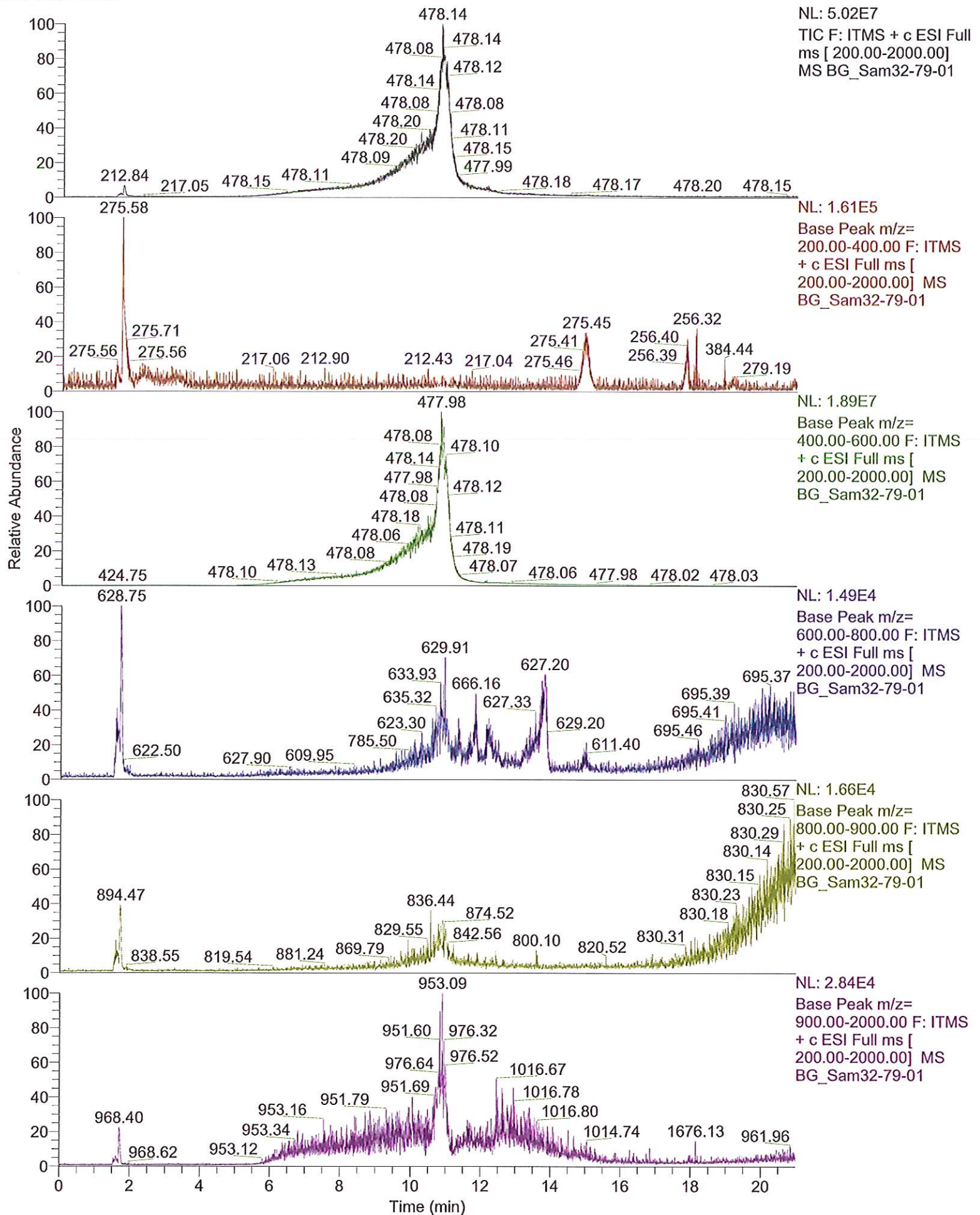
Column Type: Vydac C18

Pump A Solvent A: H2O/5% ACN TFA 0.1%

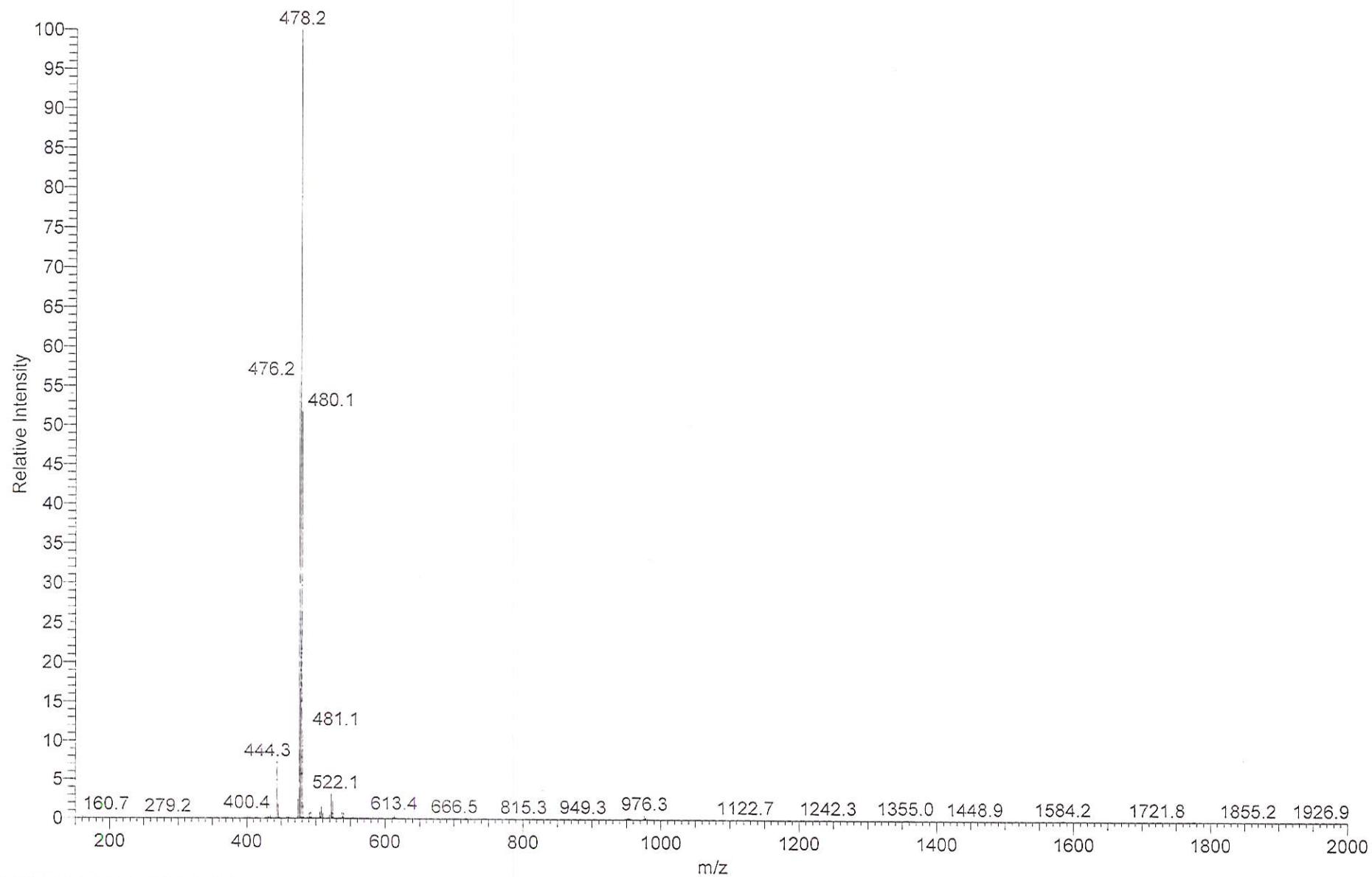
Pump A Solvent B: ACN TFA 0.1%

Method Description:

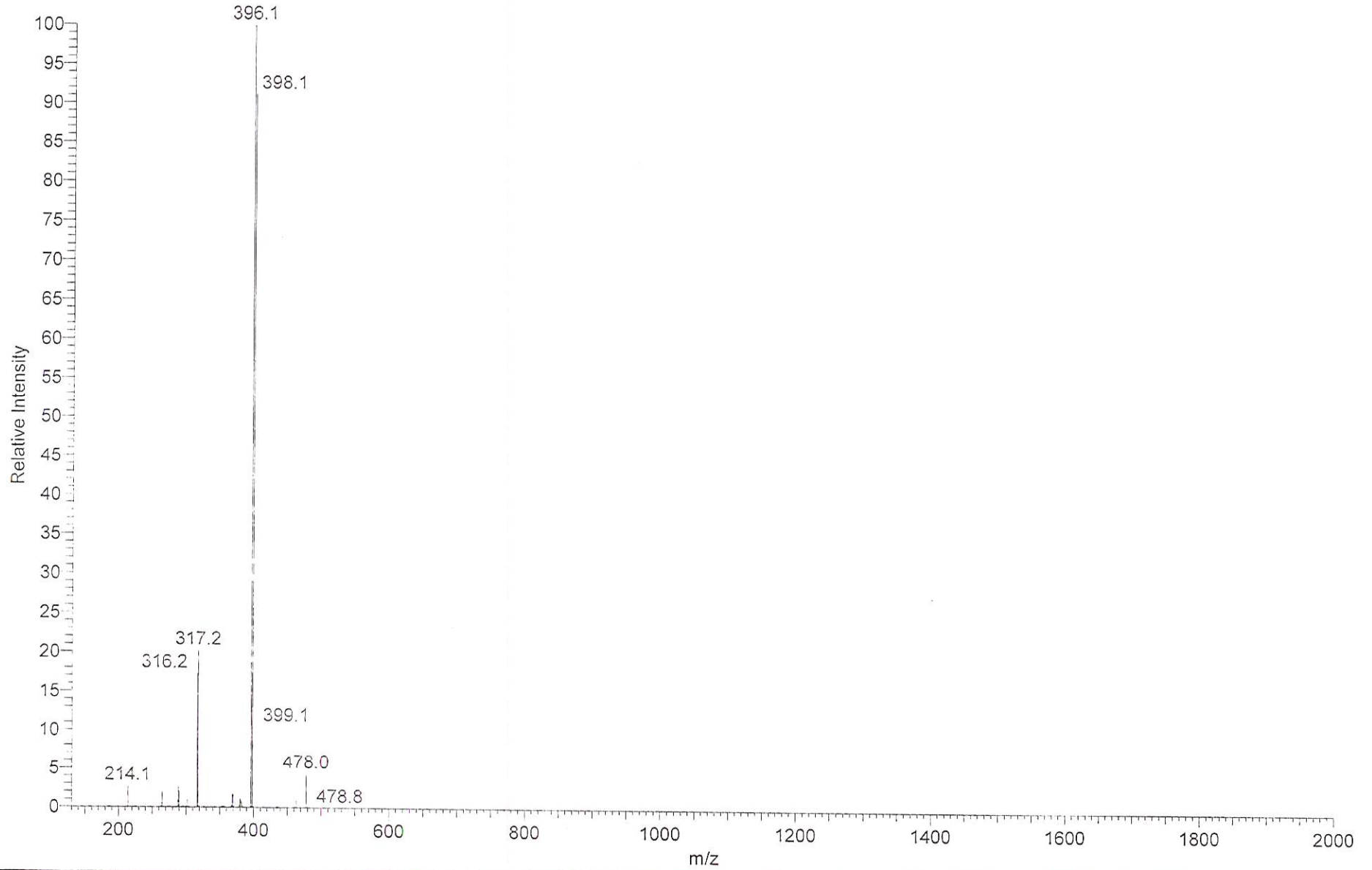
RT: 0.00 - 21.00



#9512 AV: 10 IT: 0.513 ST: 0.17 uS: 1 NL: 1.10E7  
F: ITMS + c ESI Full ms [ 150.00-2000.00]



#9702 AV: 10 IT: 0.970 ST: 0.25 uS: 1 NL: 4.44E6  
F: ITMS + c ESI Full ms2 478.00@30.00 [ 130.00-2000.00]



Sam32-79-01 proton-2.jdf  
24.5mg in MeOD

