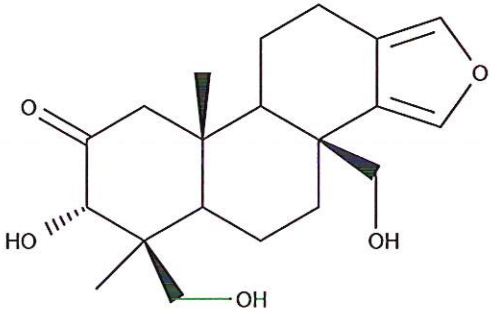


HBOI-86		
SPONGIATRIOL		
$C_{20}H_{28}O_5$		348.44
<i>Spongia</i> sp.		
Kazlauskas et al, AJC, 1979, 32, 867-880		

hplc (trace attached)

Method: Vydac C18 Protein and Peptide, 4.6 x 250mm, 10 μ
 flow 1 ml/min, detection: PDA: UV (extracted at 220 nm, black); ELSD (green dotted)
 A: H₂O:CH₃CN (95:5, v/v), B: CH₃CN
 t=0 min A:B (90:10, v/v), t=20 min (100%B) , t=28 min (100%B)

LC-MS (spectrum attached)

Method: Vydac C18 Protein and Peptide, 2.1x150 mm, flow 0.2 ml/min
 A: H₂O (0.1% formic acid), B:CH₃CN (0.1% formic acid)
 t= 0 min A:B (90:10, v/v), t=15 min (100%B), t=21 min (100%B), t=22.1 min A:B(90:10, v/v)
 using a linear gradient

¹H (600 MHz) CDCl₃ CD₃OD (Methanol-d₄) CDCl₃/CD₃OD

¹³C (150 MHz) CDCl₃ CD₃OD (Methanol-d₄) CDCl₃/CD₃OD

solubility CHCl₃/MeOH (9:1) MeOH DMSO

estimated purity __>90 _ %

sample weight __19.1__ mg

For further information contact:

Amy E. Wright, PhD, HBOI@FAU, 5600 US 1, North, Fort Pierce, FL 34946
awrigh33@hboi.fau.edu, 772-242-2459

Date: 1/28/13

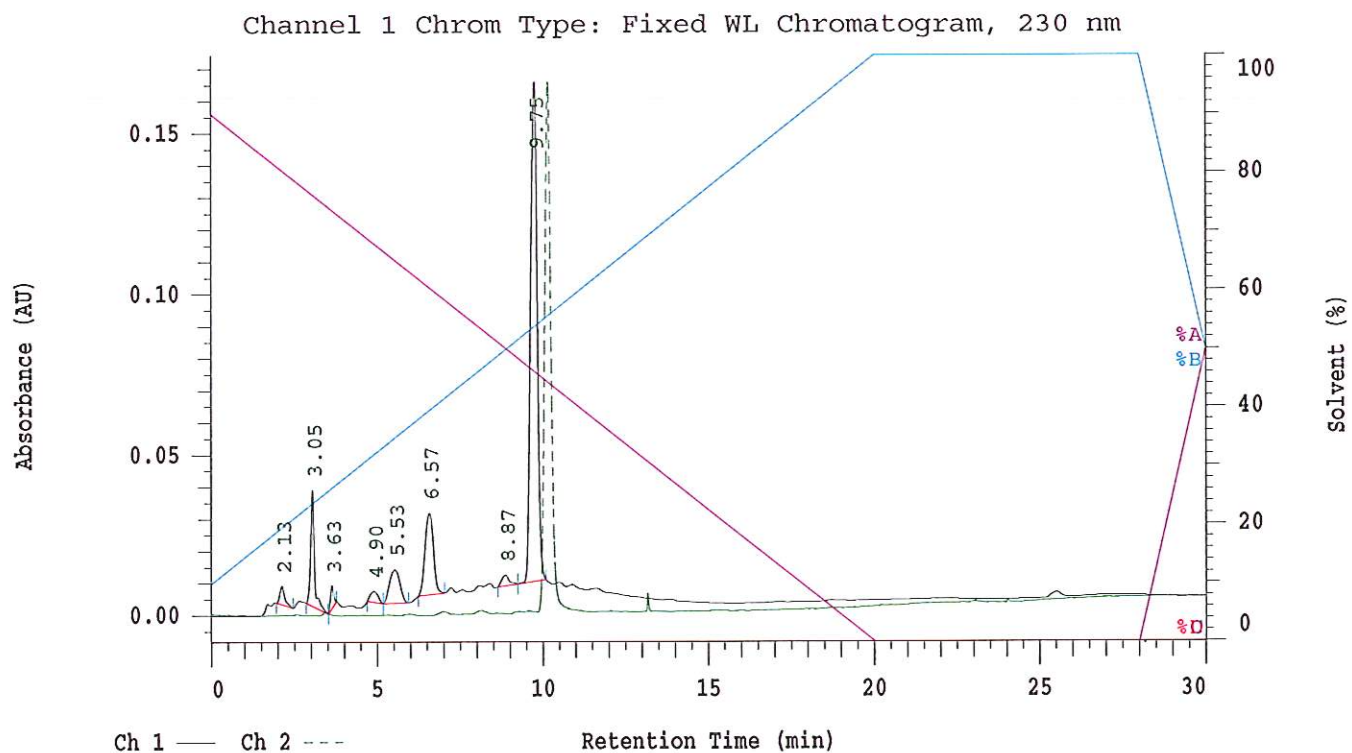
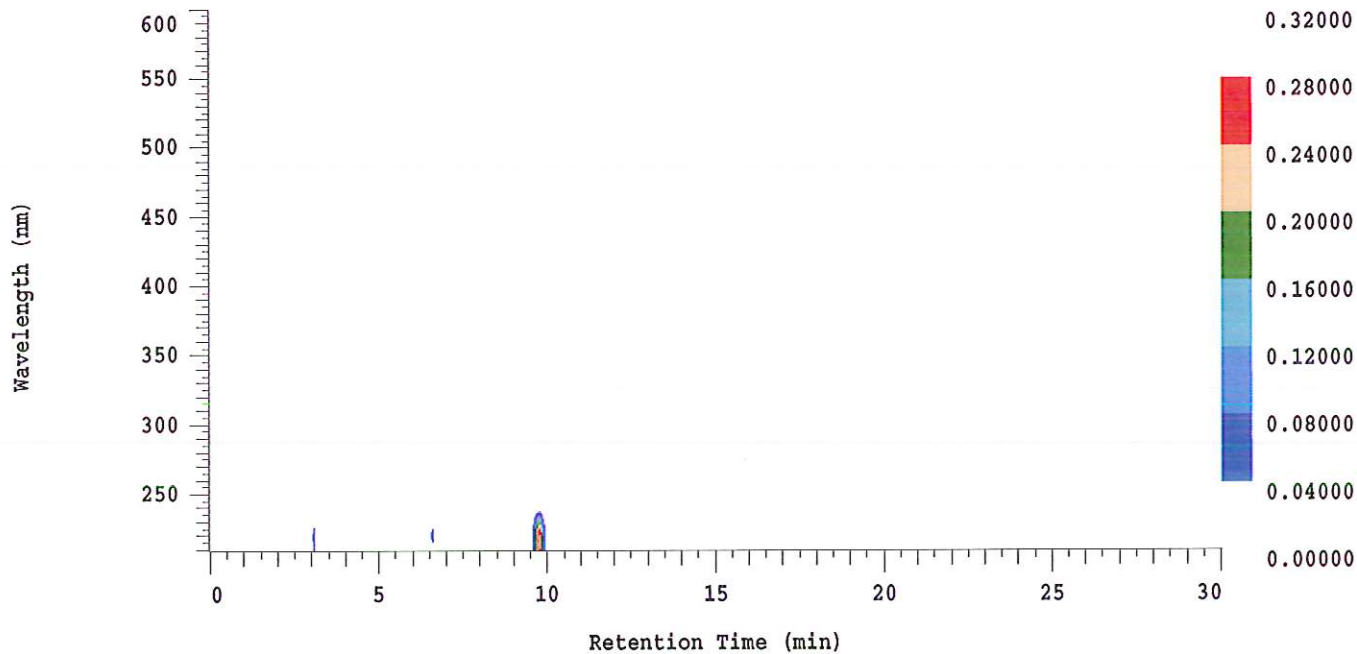
D-2000 Elite HPLC System Manager Report

Analyzed: 01/23/2013 08:10 PM

Reported: 01/24/2013 10:41 AM

Sample Name: HBOI-86

Sample Description: HBOI-86



Acquisition Method: autosamp_30mn_UV220_wELSD

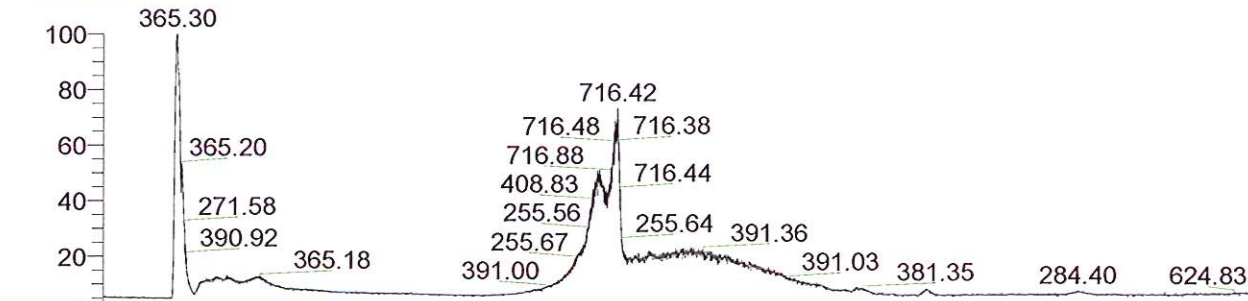
Column Type: Vydac C18

Pump A Solvent A: H2O/5% ACN

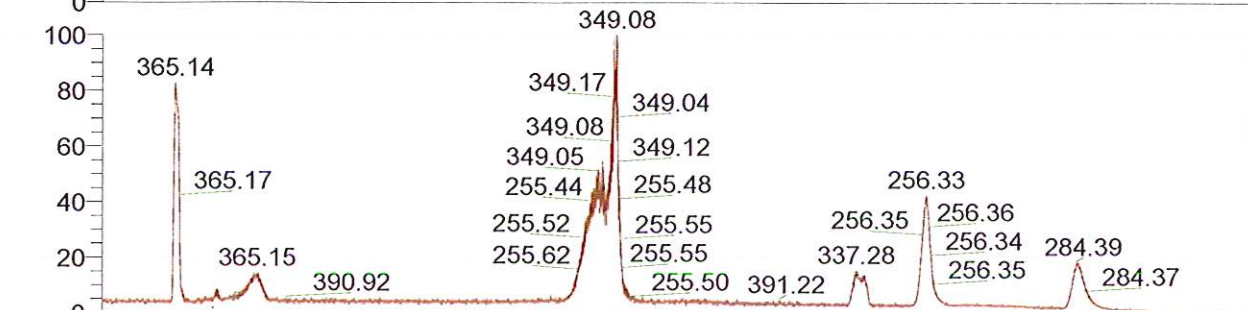
Pump A Solvent B: ACN

Method Description:

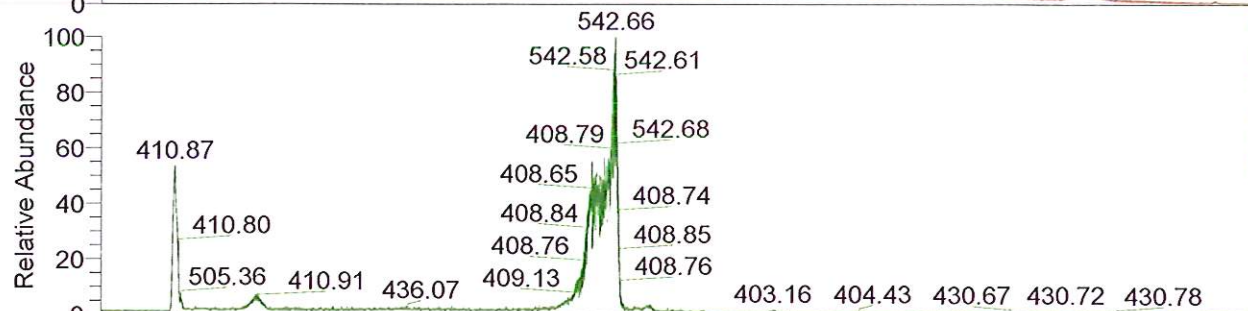
RT: 0.00 - 24.99



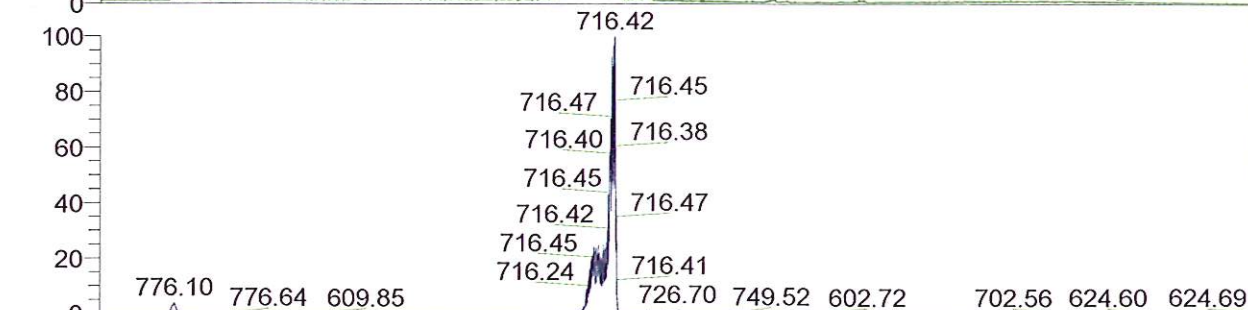
NL: 4.41E6
 TIC F: ITMS + c ESI Full
 ms [200.00-2000.00] MS
 BG_HB_86_Spongiatriol



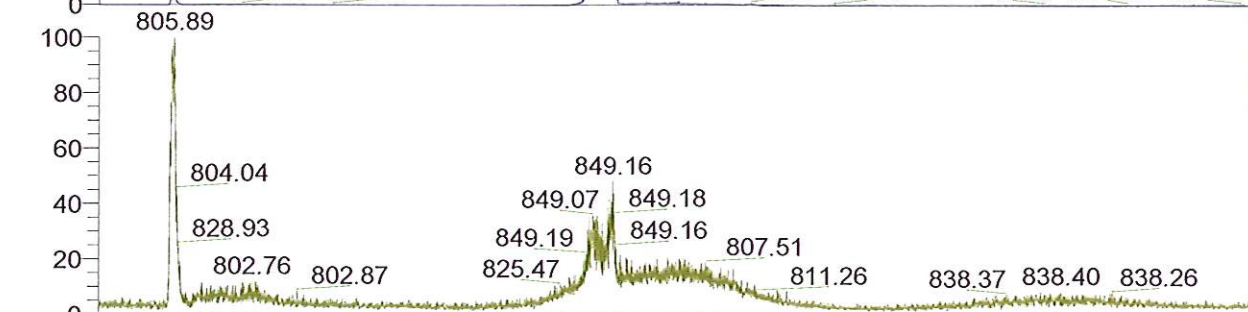
NL: 2.19E5
 Base Peak m/z=
 200.00-400.00 F: ITMS +
 c ESI Full ms [
 200.00-2000.00] MS
 BG_HB_86_Spongiatriol



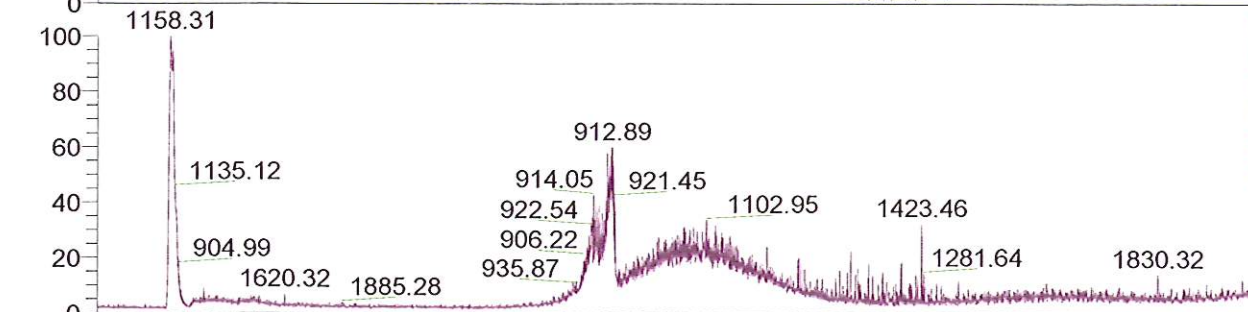
NL: 1.85E5
 Base Peak m/z=
 400.00-600.00 F: ITMS +
 c ESI Full ms [
 200.00-2000.00] MS
 BG_HB_86_Spongiatriol



NL: 5.82E5
 Base Peak m/z=
 600.00-800.00 F: ITMS +
 c ESI Full ms [
 200.00-2000.00] MS
 BG_HB_86_Spongiatriol

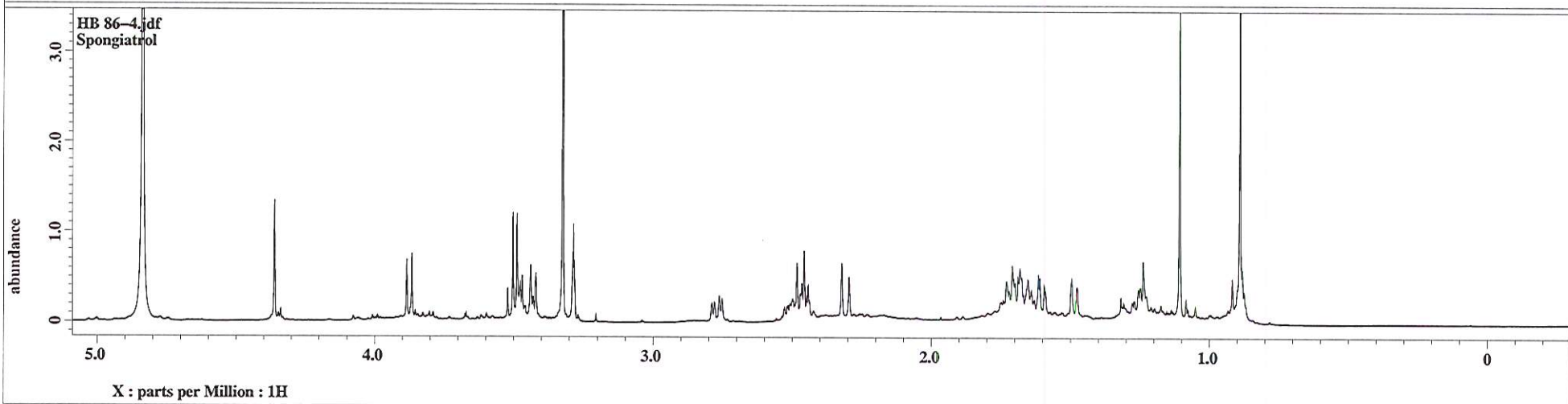
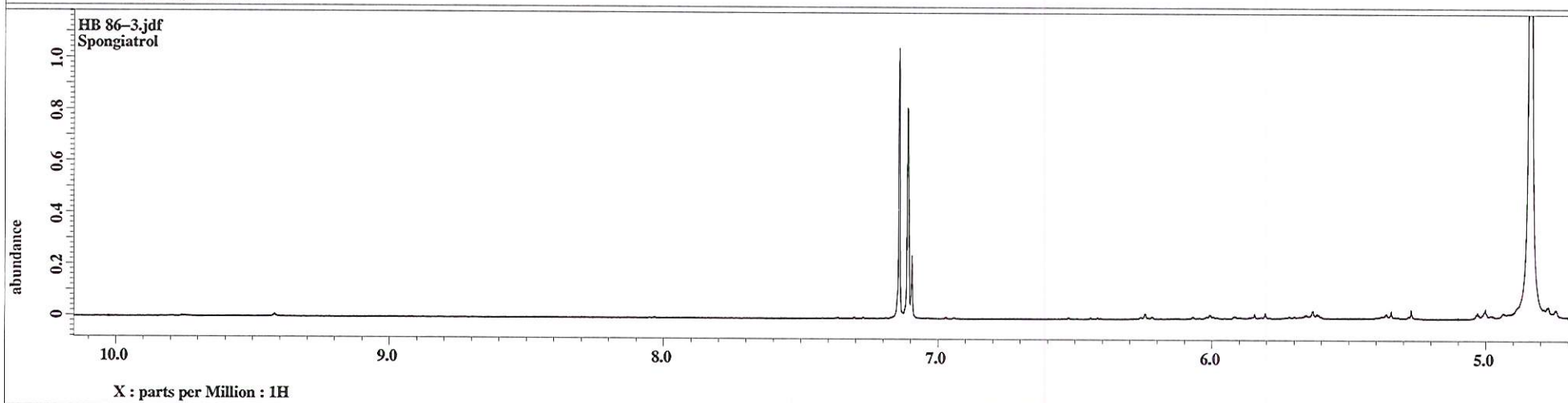
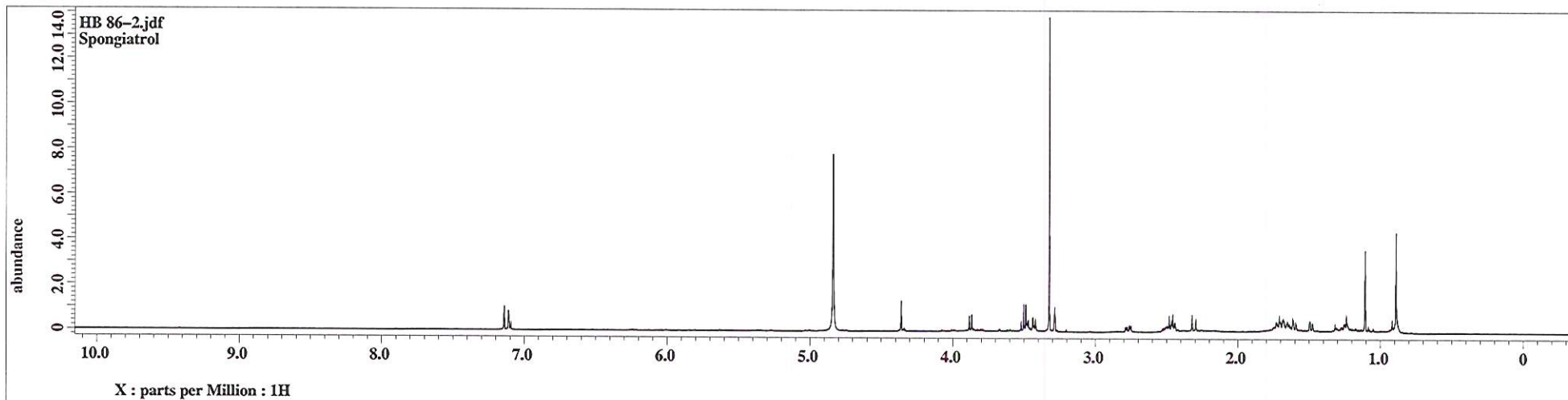


NL: 1.32E4
 Base Peak m/z=
 800.00-900.00 F: ITMS +
 c ESI Full ms [
 200.00-2000.00] MS
 BG_HB_86_Spongiatriol



NL: 7.97E3
 Base Peak m/z=
 900.00-2000.00 F: ITMS +
 c ESI Full ms [
 200.00-2000.00] MS
 BG_HB_86_Spongiatriol

Time (min)



HB86 Spongatriol MeOD_CARBON-4.jdf
HB86 Spongatriol MeOD

