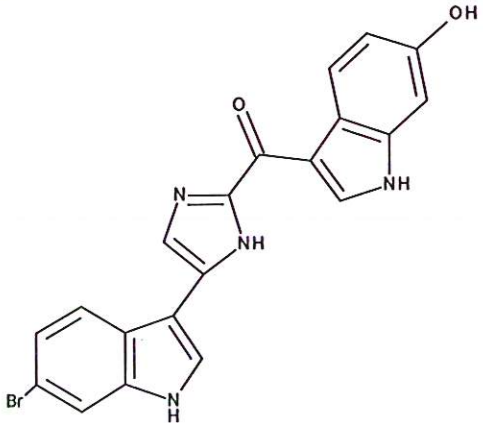


HBOI-19			
BROMOTOPSENTIN			
$C_{20}H_{13}BrN_4O_2$		421.16	
<i>Spongosorites</i> sp.			
Tsuji, Rinehart, Gunasekera, Kashman, Cross, Lui, Pomponi and Diaz, 1988, <i>J. Org. Chem.</i> , 53:5446			

hplc (trace attached)

Method: Vydac C18 Protein and Peptide, 4.6 x 250mm, 10 μ
 flow 1 ml/min, detection: PDA: UV (extracted at 220 nm, black), ELSD (green dotted)
 A: H₂O:CH₃CN (95:5, v/v), B: CH₃CN
 t=0 min A:B (90:10, v/v), t=20 min (100%B) , t=28 min (100%B)

LC-MS (spectrum attached)

Method: Vydac C18 Protein and Peptide, 2.1x150 mm, flow 0.2 ml/min
 A: H₂O (0.1% formic acid), B: CH₃CN (0.1% formic acid)
 t= 0 min A:B (90:10, v/v), t=15 min (100%B), t=21 min (100%B), t=22.1 min A:B(90:10, v/v)
 using a linear gradient

¹H (600 MHz) CDCl₃ CD₃OD (Methanol-d₄) CDCl₃/CD₃OD

¹³C (150 MHz) CDCl₃ CD₃OD (Methanol-d₄) CDCl₃/CD₃OD

solubility CHCl₃/MeOH (9:1) MeOH DMSO

estimated purity >90%

sample weight 20.1 mg

For further information contact:

Amy E. Wright, PhD, HBOI@FAU, 5600 US 1, North, Fort Pierce, FL 34946
awrigh33@hboi.fau.edu, 772-242-2459

Date: 1/28/13

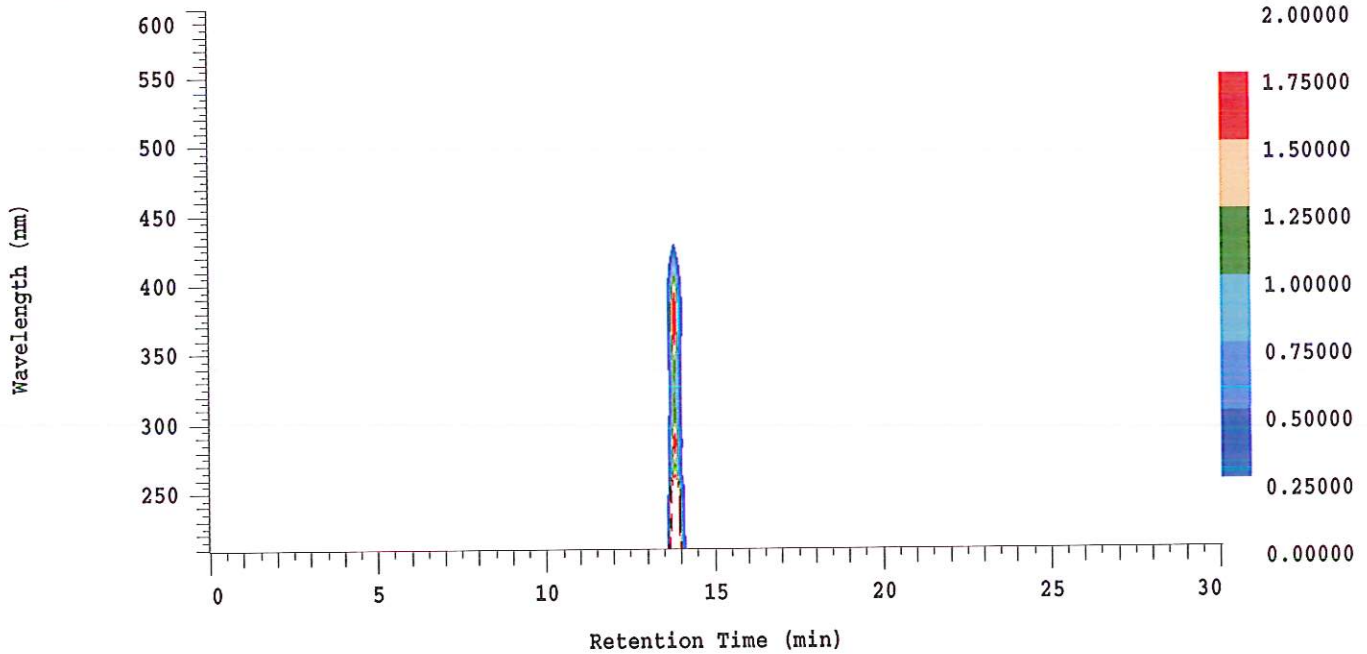
D-2000 Elite HPLC System Manager Report

Analyzed: 01/23/2013 05:00 PM

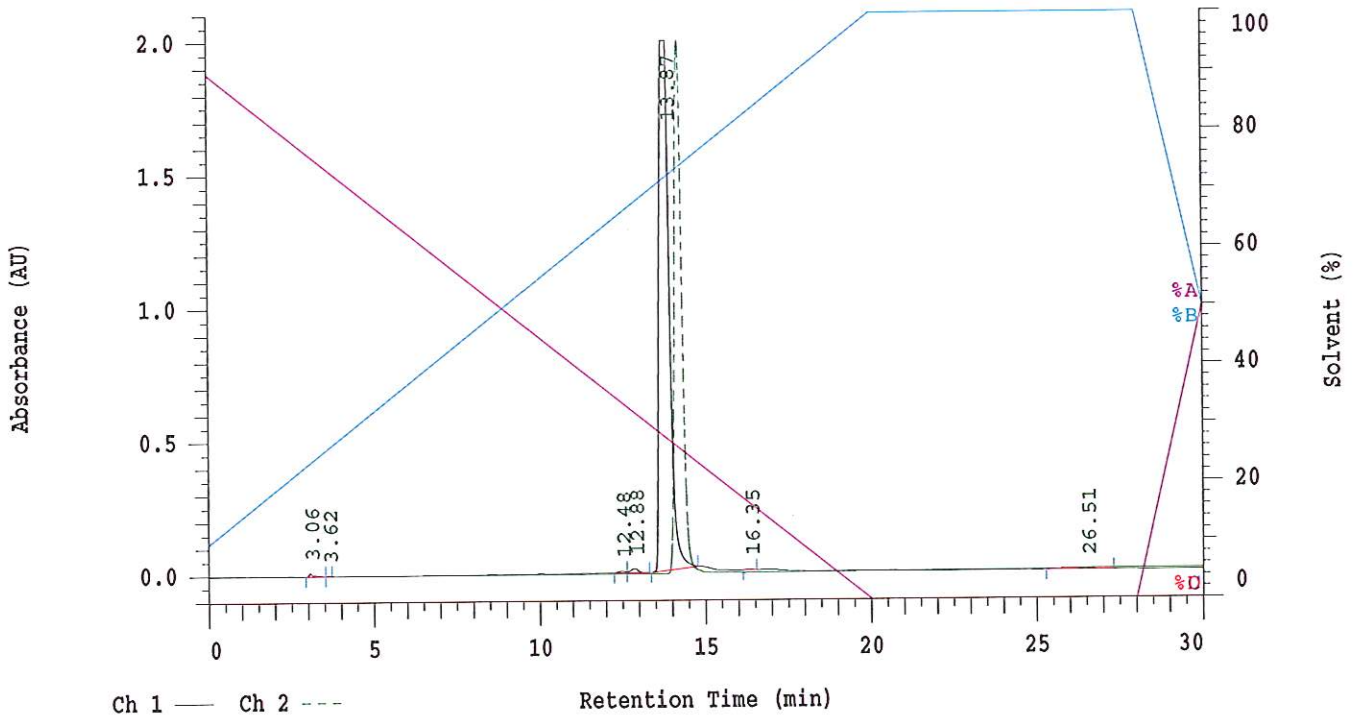
Reported: 01/24/2013 10:40 AM

Sample Name: HBOI-19

Sample Description: HBOI-19



Channel 1 Chrom Type: Fixed WL Chromatogram, 230 nm



Acquisition Method: autosamp_30mn_UV220_wELSD

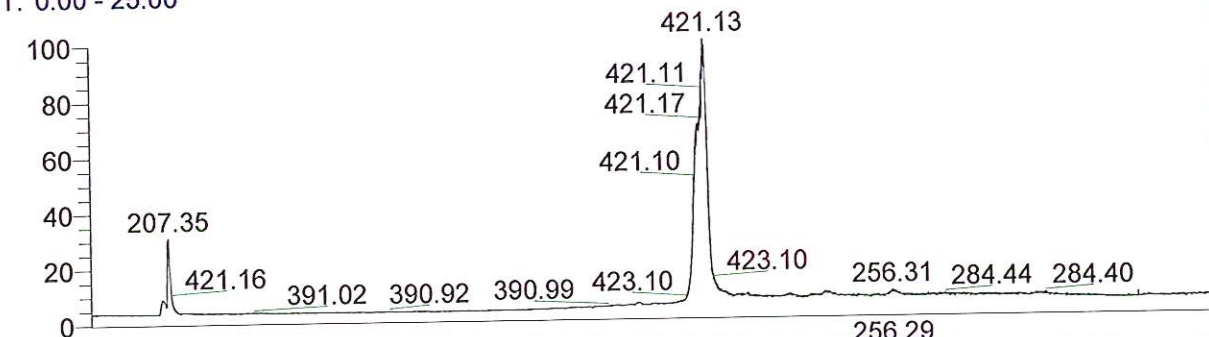
Column Type: Vydac C18

Pump A Solvent A: H2O/5% ACN

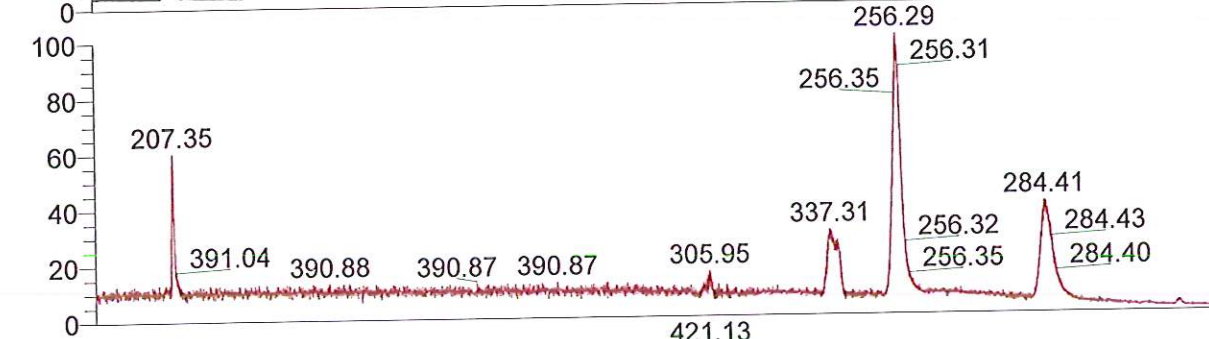
Pump A Solvent B: ACN

Method Description:

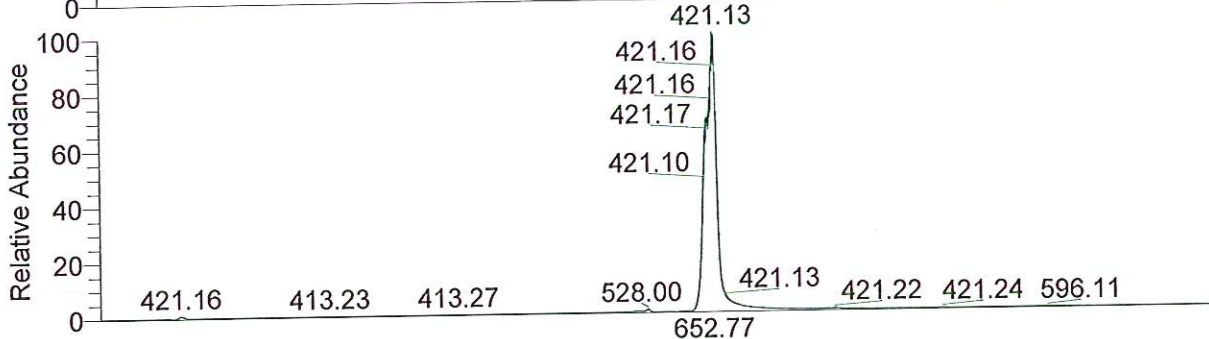
RT: 0.00 - 25.00



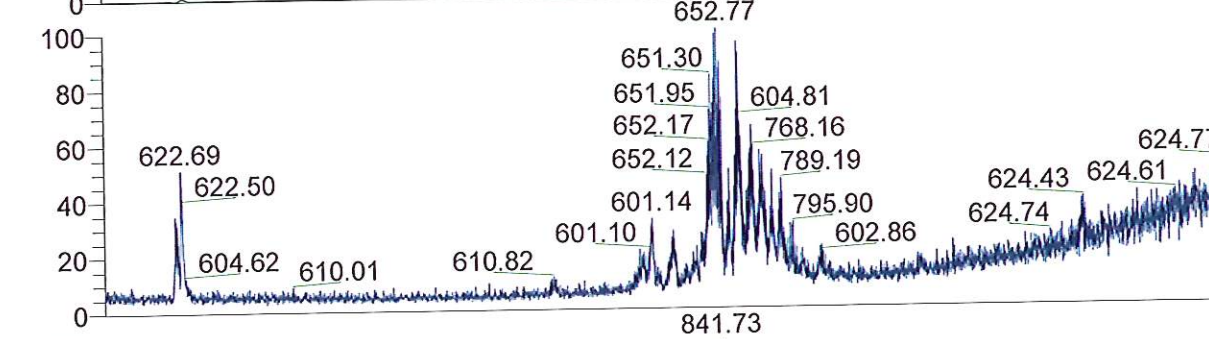
NL: 5.80E6
TIC F: ITMS + c ESI Full ms [200.00-2000.00] MS BG_HB_19_Bromotopsenti n



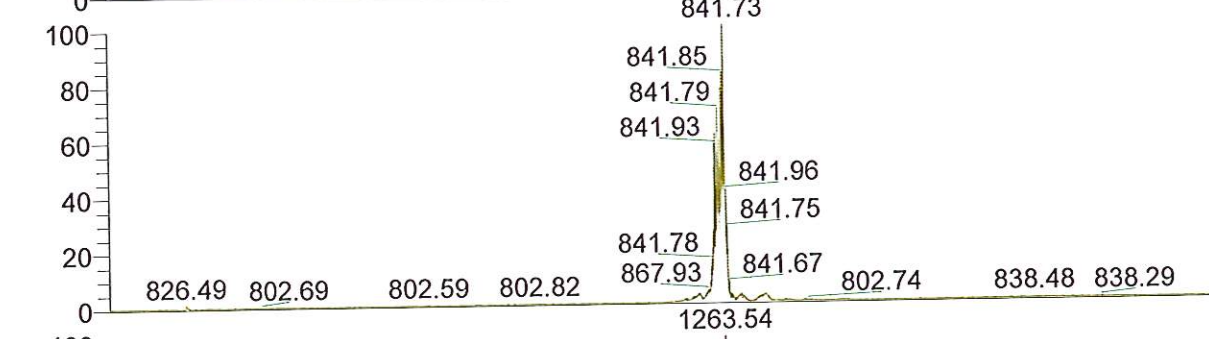
NL: 9.71E4
Base Peak m/z= 200.00-400.00 F: ITMS + c ESI Full ms [200.00-2000.00] MS BG_HB_19_Bromotopsenti n



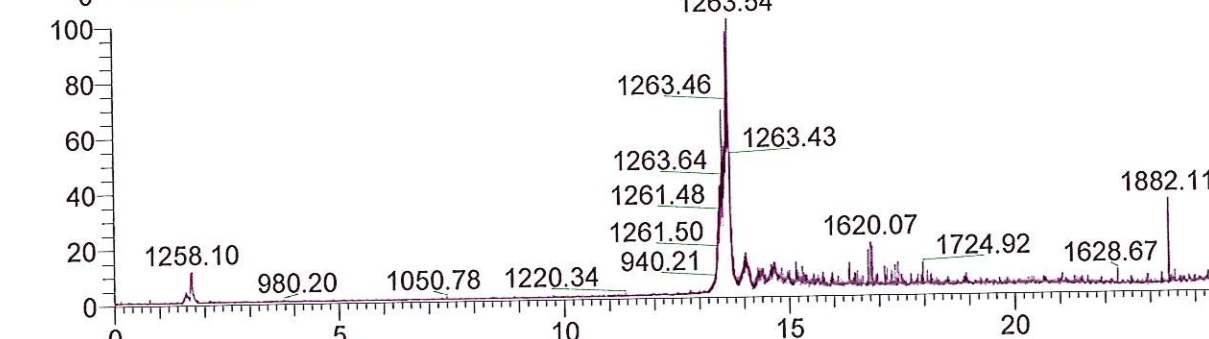
NL: 1.86E6
Base Peak m/z= 400.00-600.00 F: ITMS + c ESI Full ms [200.00-2000.00] MS BG_HB_19_Bromotopsenti n



NL: 6.00E3
Base Peak m/z= 600.00-800.00 F: ITMS + c ESI Full ms [200.00-2000.00] MS BG_HB_19_Bromotopsenti n

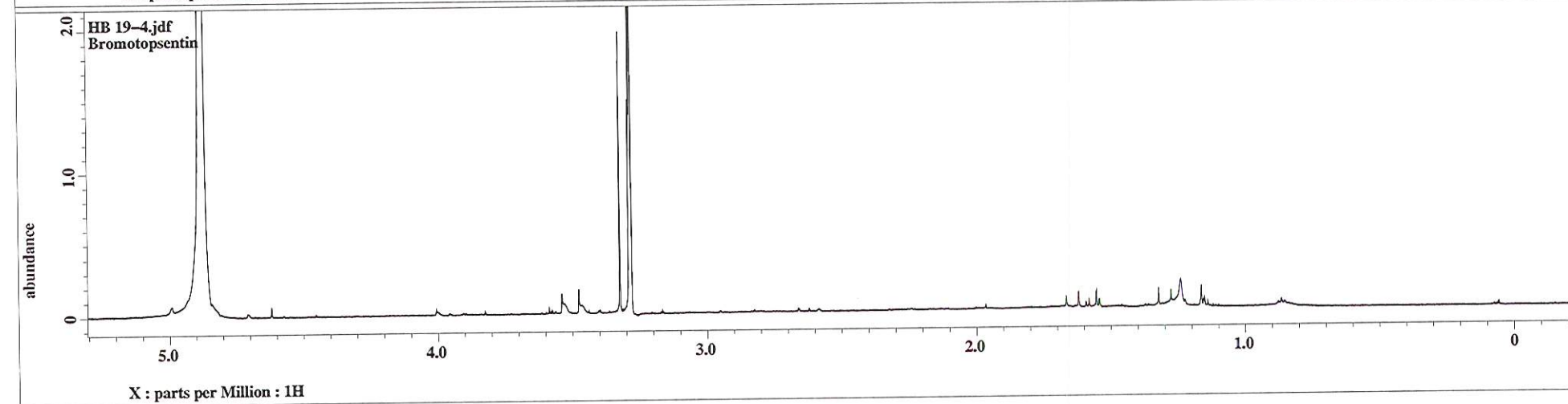
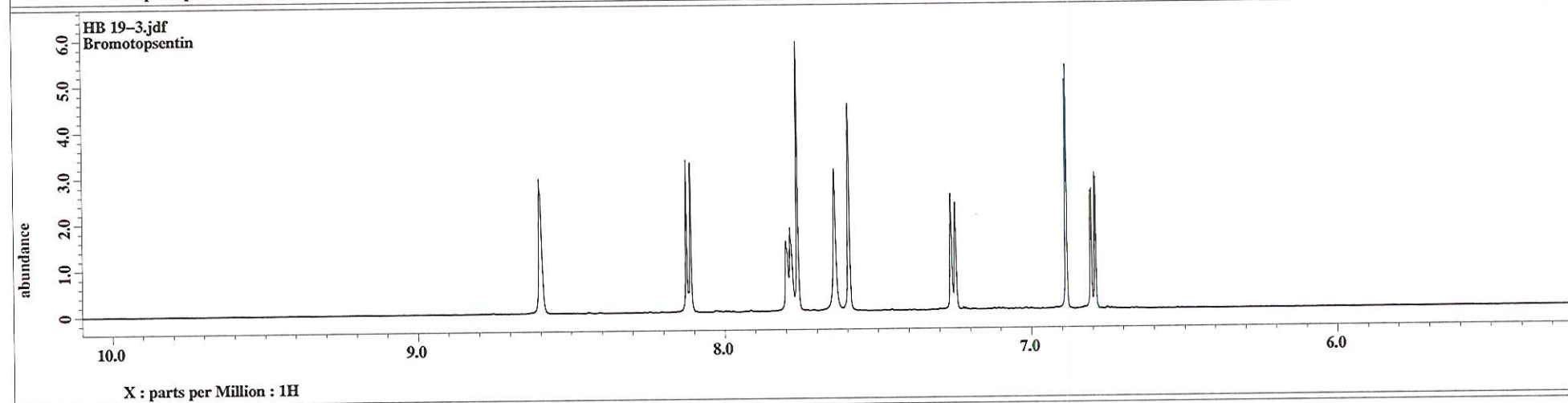
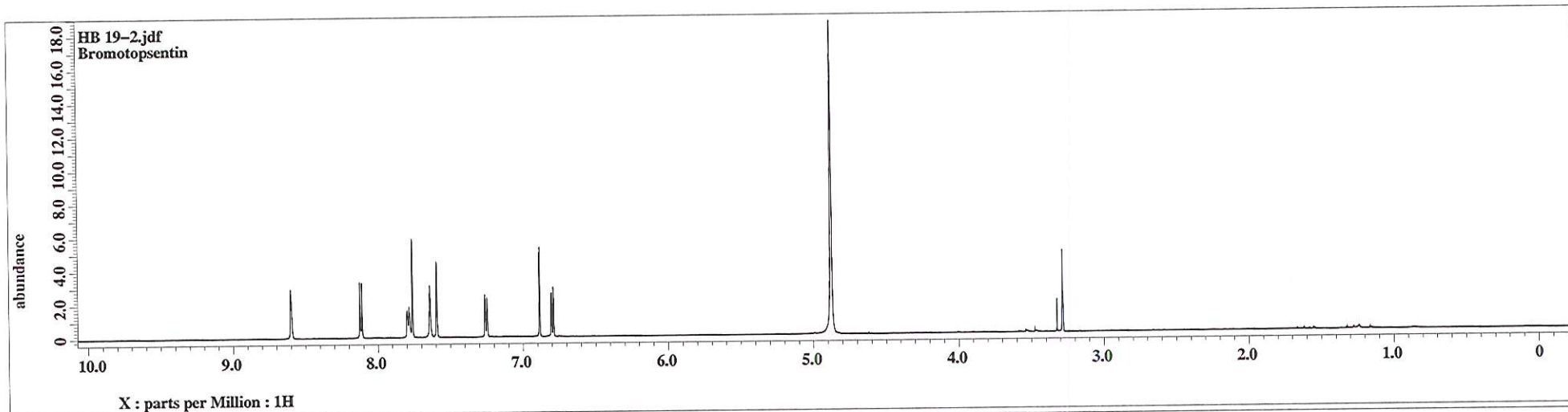


NL: 1.62E5
Base Peak m/z= 800.00-900.00 F: ITMS + c ESI Full ms [200.00-2000.00] MS BG_HB_19_Bromotopsenti n

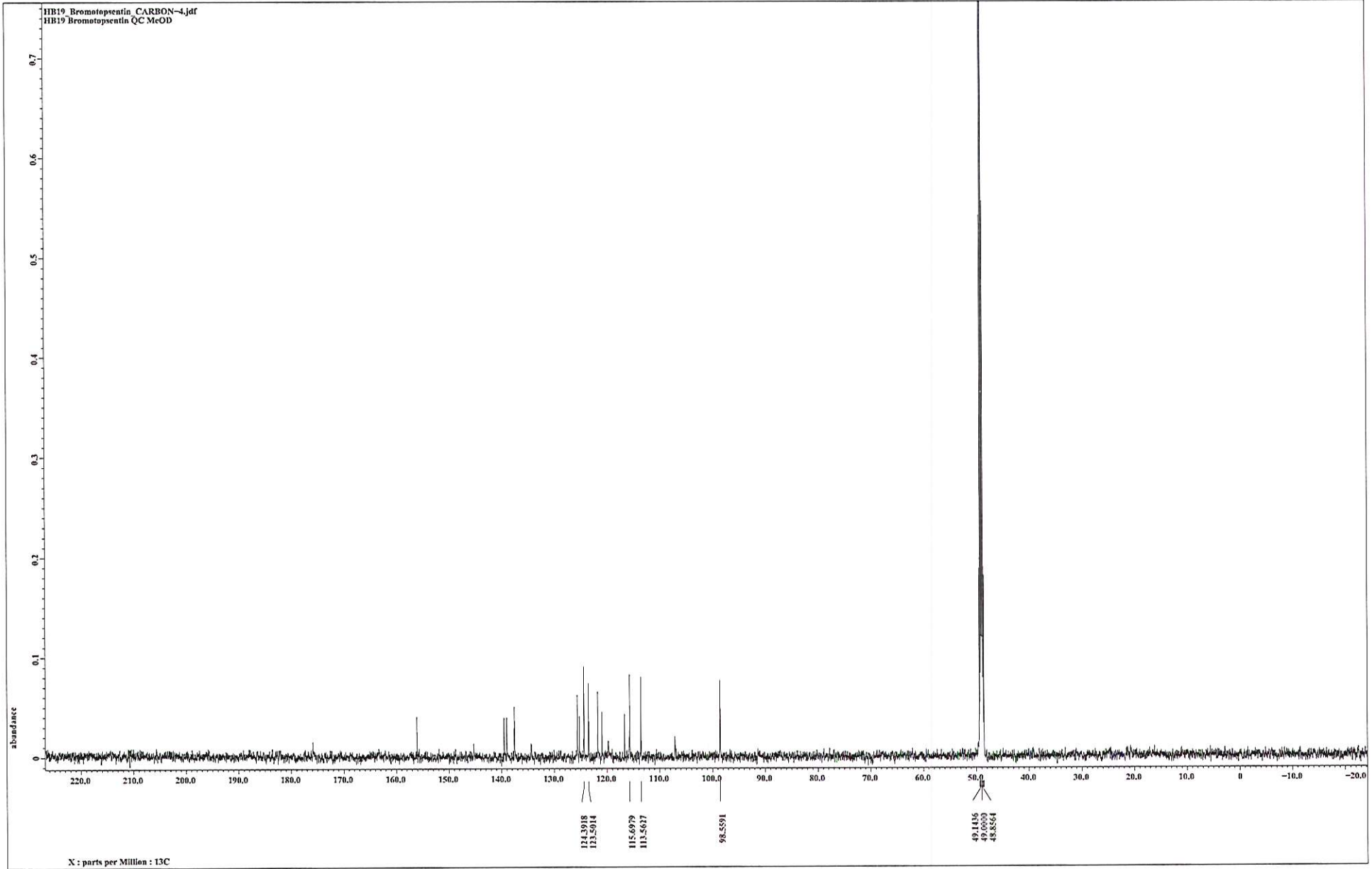


NL: 1.71E4
Base Peak m/z= 900.00-2000.00 F: ITMS + c ESI Full ms [200.00-2000.00] MS BG_HB_19_Bromotopsenti n

Time (min)



HB19 Bromotopsentin CARBON-4.jdr
HB19 Bromotopsentin QC MeOD



X : parts per Million : 13C