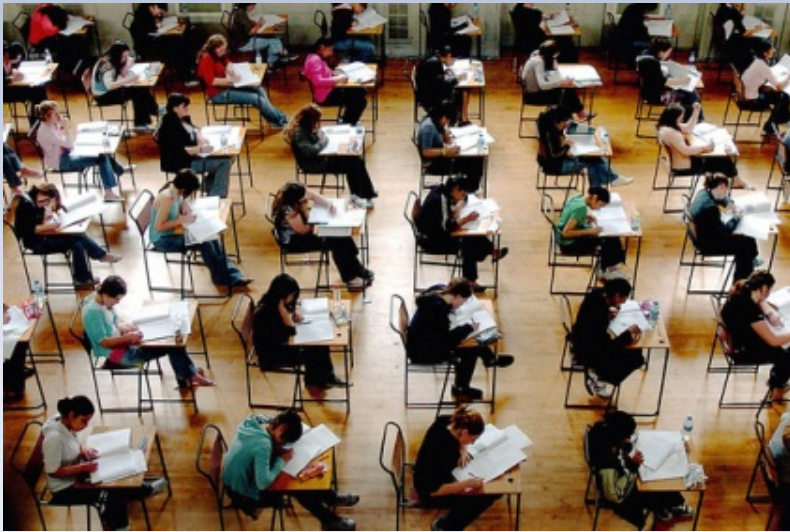


THE NEW GRE



CONTENT COMPARISON

NEW GRE

ISSUE ESSAY

(30 MINS)

ARGUMENT ESSAY

(30 MINS)

VERBAL REASONING

2 SECTIONS - APPRX. 20 QUESTIONS EACH

(30 MINS EACH - 60 MINS TOTAL)

QUANTITATIVE REASONING

2 SECTIONS - APPRX. 20 QUESTIONS EACH

(35 MINS EACH - 70 MINS TOTAL)

OLD GRE

ISSUE ESSAY

(45 MINS)

ARGUMENT ESSAY

(30 MINS)

VERBAL REASONING

1 SECTION - 30 QUESTIONS

(30 MINS)

QUANTITATIVE REASONING

1 SECTION - 28 QUESTIONS

(45 MINS)

TOTAL TESTING TIME

3 HRS / 10 MINS

2 HRS / 30 MINS

MAJOR CHANGES

COMPUTER ADAPTIVE FORMAT

- THE NEW GRE IS STILL AN ADAPTIVE TEST; HOWEVER, IT IS NOW ADAPTIVE BY SECTION, RATHER THAN BY QUESTION. SCORE WELL ON THE FIRST OF TWO MATH OR VERBAL SECTIONS, AND THE SECOND SECTION WILL BE OF A HIGHER DIFFICULTY LEVEL.
- THE NEW GRE OFFERS THE ABILITY TO SKIP QUESTIONS, GO BACKWARDS AND FORWARDS, AND TO CHANGE ANSWERS, WITHIN A SECTION, ALLOWING FOR NEW AND BETTER PACING STRATEGIES. (EACH QUESTION ON THE PRIOR GRE HAD TO BE ANSWERED BEFORE MOVING ON TO THE NEXT QUESTION.)
- THE NEW GRE NOW HAS AN ONSCREEN CALCULATOR! (ALL MATH PROBLEMS ON THE PRIOR GRE HAD TO BE SOLVED WITHOUT A CALCULATOR.)

MAJOR CHANGES

NEW VERBAL REASONING SECTION

- THE MOST SIGNIFICANT CHANGES TO THE CONTENT TESTED ON THE GRE INVOLVE THE CHANGES TO THE VERBAL SECTIONS.
- ETS CORRECTLY ASSESSED THAT THE FORMER FORMAT OVER EMPHASIZED VOCABULARY, WITH ITS 3 DIFFERENT VOCABULARY BASED QUESTION TYPES: ANTONYMS, ANALOGIES, & SENTENCE COMPLETION.
- THUS, ANTONYMS & ANALOGIES HAVE BEEN ELIMINATED ON THE NEW GRE.
- READING COMPREHENSION, A MORE REALISTIC & COMMON REQUIREMENT OF GRADUATE STUDY, IS NOW 50% OF THE VERBAL TESTED CONTENT.

MAJOR CHANGES

NEW QUANTITATIVE REASONING SECTION

- THE CHANGES TO THE MATH SECTION ARE NOT AS PROMINENT, BUT ARE ALSO A MORE ACCURATE REFLECTION OF THE REQUIRED MATH SKILLS FOR MOST GRADUATE PROGRAMS .
- MOST IMPORTANTLY, ETS CORRECTLY ASSESSED THAT ALGEBRA, AND MORE SPECIFICALLY, QUADRATIC EQUATIONS WERE NOT AREAS OF MATH REQUIRED FOR SUCCESS IN MOST GRADUATE SCHOOL PROGRAMS.
- THEREFORE, THE NEW GRE SHIFTS THE EMPHASIS FROM ALGEBRA TO BASIC STATISTICS - i.e. MEAN, MEDIAN, MODE, & STANDARD DEVIATION - GIVEN THE FACT THAT MOST GRADUATE PROGRAMS WILL REQUIRE SOME STATISTICAL ANALYSIS.

MAJOR CHANGES

STRUCTURE & FORMAT

- THE NEW GRE'S MOST SIGNIFICANT CHANGE TO THE STRUCTURE OF THE EXAM IS THE NEW ABILITY TO SKIP QUESTIONS AND RETURN TO ANSWER THEM LATER. (THE FORMER FORMAT WOULD NOT ALLOW ONE TO SKIP A QUESTION).
- ADDITIONALLY, ONE MAY MARK THE QUESTIONS THAT REQUIRE A REVISIT OR MORE TIME, AND THRU THE USE OF A "QUESTION STATUS REVIEW SCREEN", RETURN TO THEM AND RE-WORK THEM, INCLUDING CHANGING ONE'S ORIGINAL ANSWER.
- ANOTHER MAJOR IMPROVEMENT ON THE NEW GRE IS THE AVAILABILITY OF AN ON-SCREEN CALCULATOR, FOR USE ON THE QUANTITATIVE SECTIONS (THE PRIOR FORMAT DID NOT ALLOW THE USE OF A CALCULATOR AT ALL).
- FINALLY, THE NEW GRE INTRODUCES SEVERAL NEW QUESTION TYPES: **ALL THAT APPLY** (IN WHICH THE CORRECT RESPONSE REQUIRES THE STUDENT TO ACCURATELY CHOOSE ALL OF THE POSSIBLE CORRECT ANSWERS); **STUDENT RESPONSE** (IN WHICH THERE AREN'T ANY MULTIPLE CHOICE OPTIONS, AND THE STUDENT MUST KEY IN THE CORRECT RESPONSE); AND, **SELECT IN THE PASSAGE** (IN WHICH THE STUDENT MUST USE THE MOUSE TO HIGHLIGHT PORTIONS OF THE TEXT THAT MEET THE CRITERIA OF THE QUESTION).

FAU Test Preparation
777 Glades Road
Student Support Services Building
Bldg SU-80, Room 208D
Boca Raton, FL 33435
561.297.1260

www.fau.edu/testprep
mwharto3@fau.edu