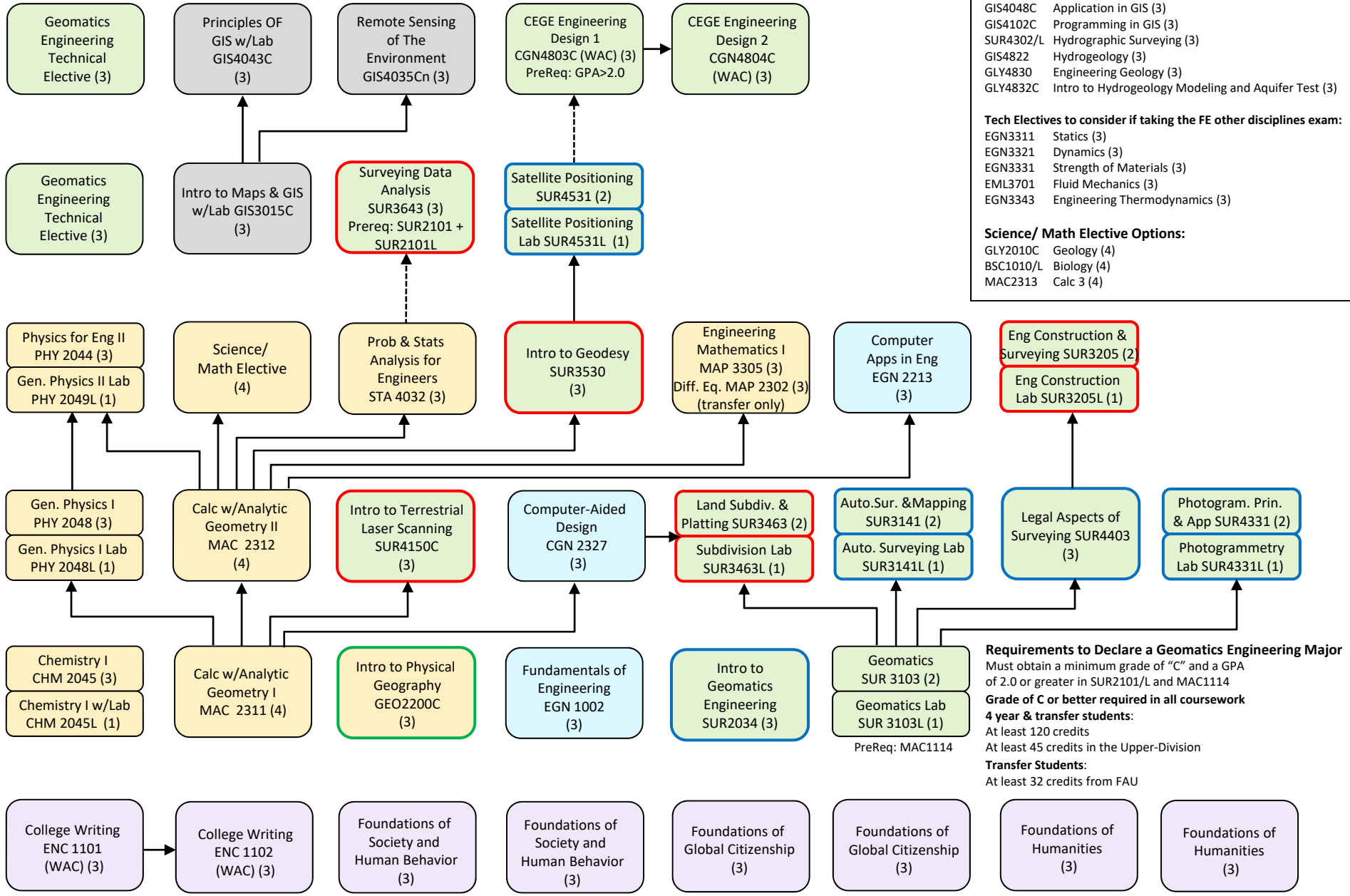


Bachelor of Science in Geomatics Engineering

Requirements listed are for the catalog effective Fall 2017

engineering-advising@fau.edu • 561.297.2780 • dessa.fau.edu • cege.fau.edu



- Technical Elective Course Options**
Select TWO of the following:
- CCE4031 Construction Project Management (3)
 - SUR4384 Thermal Infrared Remote Sensing & Applications (3)
 - TTE4105 Transportation Operations & Logistics Mgmt (3)
 - ENT4024 Entrepreneurship (3)
 - GEO4700 Transportation and Spatial Organization (3)
 - GIS4037C Digital Image Analysis (3)
 - GIS4048C Application in GIS (3)
 - GIS4102C Programming in GIS (3)
 - SUR4302/L Hydrographic Surveying (3)
 - GIS4822 Hydrogeology (3)
 - GLY4830 Engineering Geology (3)
 - GLY4832C Intro to Hydrogeology Modeling and Aquifer Test (3)
- Tech Electives to consider if taking the FE other disciplines exam:**
- EGN3311 Statics (3)
 - EGN3321 Dynamics (3)
 - EGN3331 Strength of Materials (3)
 - EML3701 Fluid Mechanics (3)
 - EGN3343 Engineering Thermodynamics (3)
- Science/ Math Elective Options:**
- GLY2010C Geology (4)
 - BSC1010/L Biology (4)
 - MAC2313 Calc 3 (4)

Requirements to Declare a Geomatics Engineering Major
 Must obtain a minimum grade of "C" and a GPA of 2.0 or greater in SUR2101/L and MAC1114
Grade of C or better required in all coursework
4 year & transfer students:
 At least 120 credits
 At least 45 credits in the Upper-Division
Transfer Students:
 At least 32 credits from FAU

LEGEND:

- ← Pre-Requisite
- ←- - - Pre- or Co-
- Fall Only
- Spring Only
- Summer Only
- Sci & Math
- Core Courses
- Engineering Fund. Courses
- IFP Requirements

This flowchart is reviewed periodically and is subject to change as new requirements become necessary to educate geomatics engineers. The information is intended to inform and is not a replacement for a degree audit conducted with an academic advisor.