



Summer 2015

FAU CARD NEWSLETTER

FLORIDA ATLANTIC UNIVERSITY™
CARD

MAY

- May 9 Mentor Information-Session
- May 14 Treasure Coast Adult Social Group
- May 14 Developing Leisure Skills
- May 16 Treasure Coast Autism Awareness 5K Run/Walk
- May 16 Practicing Behavior Analysis within Professional Ethics and Standards
- May 18 Boca Raton Adult Social Group
- May 19 Parent and Youth Program Orientation
- May 28 Planning Ahead - Strategies for Successfully Coping with Hurricane Season and More
- May 29 Autism & Safety
- May 29 Vocational Rehabilitation Services
- May 29 Jupiter Adult Social Group

JUNE

- June 2 Avoiding the “Summer Slide”
- June 11 Treasure Coast Adult Social Group
- June 12 Understanding the “A-word”: Making Sense of My Child’s New Diagnosis of Autism Spectrum Disorder
- June 15 Boca Raton Adult Social Group
- June 24 Treasure Coast Autism Law Enforcement & Public Safety Conference
- June 26 Introduction to Social Stories/Scripts: How To Write One And When To Use It
- June 26 Jupiter Adult Social Group

JULY

- July 9 Increasing Independence
- July 9 Treasure Coast Adult Social Group
- July 14 Strategies to Support Siblings
- July 17 Pre-Employment Series: Part 1
- July 20 Boca Raton Adult Social Group
- July 24 Pre-Employment Series: Part 2
- July 24 Jupiter Adult Social Group

AUGUST

- August 7 Building with Blocks to Build Baby’s Language Skills: Using Play to Develop Communication
- August 17 Boca Raton Adult Social Group
- August 13 Treasure Coast Adult Social Group
- August 28 Introduction to Applied Behavioral Analysis
- August 28 Jupiter Adult Social Group

Visit: <http://www.coe.fau.edu/centersandprograms/card/trainingcalendar.aspx>

FAU CARD does not endorse specific programs or points of view presented in this newsletter.

Executive Director Message

Dear CARD Families,



I want to bring to everyone’s attention to two important developments. First, The Unicorn Children’s Foundation of Boca Raton is now conducting a major survey of services for persons with disabilities and special needs living in Palm Beach County. You may have received e-mails on this and we have an announcement about these developments in this newsletter. Please pay close attention to this critical effort. I want to urge you to complete the surveys, volunteer to be interviewed, and attend some of The Community Conversation Meetings. This will be the best time for the autism community to voice our concerns and let the major funders of special programs and big agencies such as The Children’s Services Council of Palm Beach County and the Palm Beach County Commission know what the needs are directly from you.

Autism is often completely ignored by some of the major agencies in the county as it is somewhat of a latecomer to the game. Other disabilities have been at it longer and several disabilities have organizations that lobby for and then obtain funding for the population of children with disabilities they are concerned with.

We don’t really have such an organization and CARD at FAU does not serve that role. What happens is that the mental health and the organizations for children with intellectual disabilities tend to get best access to the limited funding available. This is our time, as an autism community, to speak up about inequities in the funding availability. To be fair to these other groups, while they do get more resources, they are still short changed in our county. The survey will help address the broad array of unmet needs for special children and youth in Palm Beach County. Please do not let this opportunity slip by.

The second topic has to do with an artists’ cooperative in Broward called Artists with Autism (www.artistswithautism.org). This micro-enterprise is growing in strength and now has a gallery at the Festival Market Place in Pompano Beach. I visited recently and met with artist Brandon Drucker. I had commissioned a work of art (see photo below) and went to pick it up at The Gallery. I am very happy with my new painting as you can see! Let me urge you to check their web site and to make a visit to their gallery at The Festival Market Place or call 954-895-2786. You will see amazing expressions of artistic ability by those with autism.



Jack Scott
Executive Director

Director's Update

Dear CARD Families,

It has been a very busy winter and spring at FAU CARD. FAU CARD sponsored so many trainings and events! These included an exciting Autism Speakers Series, social groups, parent support groups, mentoring program orientation and a myriad of training topics on IEPs, independence and self-help, transition, writing, diagnosis and intervention, grandparents and more! FAU CARD additionally has continued to offer evidenced based programming to support elementary age children in initiating and maintaining friendships through offering the Children's Friendship Training groups in our Boca location.

Through the generous donation of the Mangurian Foundation, FAU CARD offered the first 2015 Autism Speakers Series. The Autism Speakers Series sponsored speaking engagements by David Finch and John Elder Robeson. David and John shared their journey living with autism, with enthusiastic participants. We're excited to announce that we will continue to offer these speaking engagements through 2016 to increase understanding of autism in our community.

The FAU CARD 6th Annual Wings of Hope Cocktail Party, Dinner and Reception was a huge success and garnered over 170 guests and friends of FAU CARD. I want to thank the countless number of volunteers and sponsors. This event honored our friends at Surfers for Autism and WPTV for their longstanding support and dedication to the Autism community. Thank you also to Lloyd Bucher and Michael Williams of WPTV for serving as Master of Ceremony and Joe Eppy for serving as the auctioneer for the Live Auction. Finally, I want to thank the tireless and hard working Wings of Hope Committee in particular Dr. Gregory and Laina Albert, Brett Hart, Sheriann Namer, Lee and Debra Rosenfeld, Glen Stein, Michele Weppner, Barbara Wolk and Mercedes Pagano! A special thank you to Lloyd Bucher, Committee Chair, and FAU CARD staff for their hard work, dedication and countless hours contributed to make this event a success. Thank you all!

On Saturday, March 28th we hosted our 9th Annual Family Connections Conference at the FAU Jupiter Campus. This event was a comprehensive family event offering training for parents, comprehensive care and fun activities for the child with autism as well as lunch for all participants sponsored by Butterfly Effects. The theme for the event was "Decreasing Stress and Anxiety in Children with ASD and their Families". Dr. June Grodin, Founder and Executive Director of the Grodin Center in Providence, Rhode Island was the Keynote Speaker. Dr. Grodin provided parents with strategies and tools to decrease anxiety and stress in their child. Dr. Kelley Everson and Dr. Brandi Rials, of Palm Beach Behavioral Health and Wellness shared the impact of stress and anxiety on the brain and body. Lastly, Dr. Father Ghanoum, Clinical Psychologist and Veronica Castro, LCSW, Clinical Support Specialist with FAU CARD provided practical strategies for decreasing anxiety and stress. We want to thank Butterfly Effects for generously providing lunch for all participants, Susan "Fun" Foley for planning and coordinating all the fun activities for the children with autism, Isabel for the Yoga Instruction, volunteers who gave of their time and all of the speakers for sharing their expertise. A fun, relaxing and educational time was had by all.

FAU CARD is sponsoring its 3rd Treasure Coast Annual Autism Awareness 5K Race and Walk at Jonathan Dickenson State Park in Martin County on Saturday, May 16th with on site registration at 6:30am and the race beginning at 7:30am. We are encouraging all of our northern Palm Beach and Treasure Coast families to come, support FAU CARD and have fun. For details, please see the event flyer on our website.

Finally, please plan on attending and encouraging your child's teacher, paraprofessional and support staff to attend our Summer Academy on Monday, July 27 and Tuesday, July 28th. This free event will be held at the FAU MacArthur Jupiter Campus in the Lifelong Learning Center from 9:00-3:00pm. We are very excited to sponsor Dr. Merrill Winston and Dr. Julie Causton as Keynote Speakers for our event. Dr. Merrill Winston is a Board Certified Behavior Analyst with specialties in developmental disabilities & behavior disorders. Dr. Julie Causton is an Associate Professor of Special Education at Syracuse University. She works with administrators, teachers and paraprofessionals to promote inclusive practices for individuals with disabilities.

I hope to see you at some of our events. Have a wonderful summer!

Maryellen Quinn-Lunny, Ed.S.
Director

TIPS FOR YOU

BOOSTER SEAT



Some children may not be eager and willing to sit in car seats and boosters. Here are some suggestions for reducing problems.

- Narrow down your choices for safe car seats. Then, allow the child to be a part of the choosing the final one.
- Help them understand that they will be using the seat in advance. You are helping them to predict what will happen so they are able to become more comfortable with the idea of sitting in the seat.
- Let them sit in the car seat or booster in the house while watching a favorite TV show and engaging in preferred activities. This can help foster a good "vibe" for the new seat.
- To minimize installation issues, secure the seat in the vehicle without the child present and well in advance to its first use. Problems are more likely to arise if you are running late and are trying to quickly rush the installation with your child at your side. When using the car seat for the first time, it may help to make a trip to a location your child prefers.
- Reinforce the child for good booster seat use. Praise them for acting like "Big boy" or "Big girl" as they cooperate with your efforts to keep them safe.
- If all this fails, please call your FAU CARD Clinical Support Specialist. We can either make additional suggestions, refer you to people who can help, and/or work with you directly to keep your child safe.

THE Staff

Cathy Allore
Clinical Support Specialist
callore@fau.edu
Phone: 772-873-3367

Noelle Balsamo
Clinical Support Specialist
nbalsamo@fau.edu
Phone: 561-212-4930

Kelly Bastien
Clinical Support Specialist for Community Outreach
basteink@fau.edu
Phone: 561-235-8412

Veronica Castro
Clinical Support Specialist
castrov2014@fau.edu
Phone: 561-213-8381

Alison Bourdeau
Clinical Support Specialist
abourdeau@fau.edu
Phone: 561-990-9518

Ana Moyano
Student Assistant
CARD@fau.edu
Phone: 561-297-2055

Don Lawless-Coker
Grants Coordinator
dcoker@fau.edu
Phone: 561-297-4016

Susanna Launder
Clinical Support Specialist
slaunder@fau.edu
Phone: 561-212-2859

Maryellen Quinn-Lunny
Director
mqunny@fau.edu
Phone: 561-221-3436

Elisa Cruz-Torres
Assistant Director
ecruz4@fau.edu
Phone: 561-235-9078

Ali Cunningham
Clinical Consultant
acunning5@fau.edu
Phone: 561-297-2185

Rosemary Portera
Clinical Support Specialist
r.portera.vaughn@fau.edu
Phone: 772-873-3422

Crystal Saint-Preux
Student Assistant
CARD@fau.edu
Phone: 561-297-2055

Jennifer Sanderson
Clinical Support Specialist
jsanderson@fau.edu
Phone: 561-235-9342

Mercedes Pagano
Coordinator Information & Publication Services
paganom@fau.edu
Phone: 561-212-8058

Jennifer Pollack
Clinical Support Specialist for Transition
jpollack@fau.edu
Phone: 561-212-4203

Darius Murray
Clinical Support Associate for Mentoring
dmurray23@fau.edu
Phone: 561-213-6936

Jack Scott
Executive Director
jscott@fau.edu
Phone: 561-251-4104

MEET OUR NEW CLINICAL SUPPORT SPECIALIST FOR COMMUNITY OUTREACH



Kelley Bastien is a native Floridian. She has a Bachelor's of Arts in Psychology from Loyola University in New Orleans, Louisiana and a Master's in Social Work from Barry University in North Miami Beach, Florida. Kelley has worked in the field of Early Intervention in Palm Beach County for the past 20 years. She has served as a trainer, training coordinator, case manager and champion for families of children with special needs. Kelley is passionate about parents, children and the professionals who serve them.

Prior to joining FAU CARD, Kelley served as the Training Coordinator for Easter Seals Treasure Coast Early Steps Program. In her capacity as Training Coordinator, Kelley monitored the local Early Steps training process, facilitated staff development opportunities, conducted outreach and community awareness activities and organized meetings with community partners. While serving as a Family Service Coordinator, Kelley provided case management services for children with developmental delays and disabilities ages birth to three, with particular interest in Autism Spectrum Disorders.

For the past 10 years, Kelley has been a member of the Touchpoints™ Training Cadre with the Children's Services Council of Palm Beach County. She has collaborated with team members to provide Individual Level Trainings for front-line practitioners serving children and families in Palm Beach County. Kelley has also Facilitated Reflective practice and Integrating Training Through Reflection sessions at the Children's Services Council office and local community agencies.

GRANDPARENTS TRAINING SERIES WRAP-UP



FAU CARD recently ran a series of trainings geared specifically to the grandparents of individuals with Autism Spectrum disorder. The training took place at the Life Long Center at the FAU Honors college campus in Jupiter. We were fortunate enough to have over 25 participants including grandparents, parents, and educators working with individuals with ASD. Participants came from as far north as Vero Beach and as far south as Boca Raton. The first two sessions in the series focused on providing grandparents quality information and strategies to enhance their interaction with their grandchild with ASD as well as to support their own adult child. For the final session we were provided a glimpse into the journey of one set of grandparents. Michael and Elaine Halberstadt were kind enough to share their story and provide everyone in the audience with hope for the future. We are looking forward to providing continued training opportunities for all family members.

CAMPS & PROGRAMS FOR SPECIAL POPULATIONS

The 2015 summer camp list has been updated and is now available. You may access the list on our website: www.coe.fau.edu/centersandprograms/card/documents/2015CampsandProgramsforSpecialPopulations.pdf



Please note that this compilation of summer camp providers is for informational purposes only. Contact the provider directly for more information when determining if a camp or program is appropriate for you, your child, or family member.

Palm Beach State's Summer Youth College offers a variety of classes for children of all ages. For more information click on the links below:

Boca Raton: www.palmbeachstate.edu/syc/boca-raton

Lake Worth: www.palmbeachstate.edu/syc/lake-worth

Palm Beach Gardens: <http://www.palmbeachstate.edu/syc/PBG/default.aspx>



IT'S TRANSITION TIME

Jennifer Pollack

Starting out on a new path can be challenging for young adults. There may be uncertainty, fear (for both students and parents), and a lack of clarity about what to prepare for. When discussing transition with your student a great way to begin is to talk about and plan for each facet of life: education and learning, employment/financial, safety, spiritual, social/relationships, and recreation/leisure.

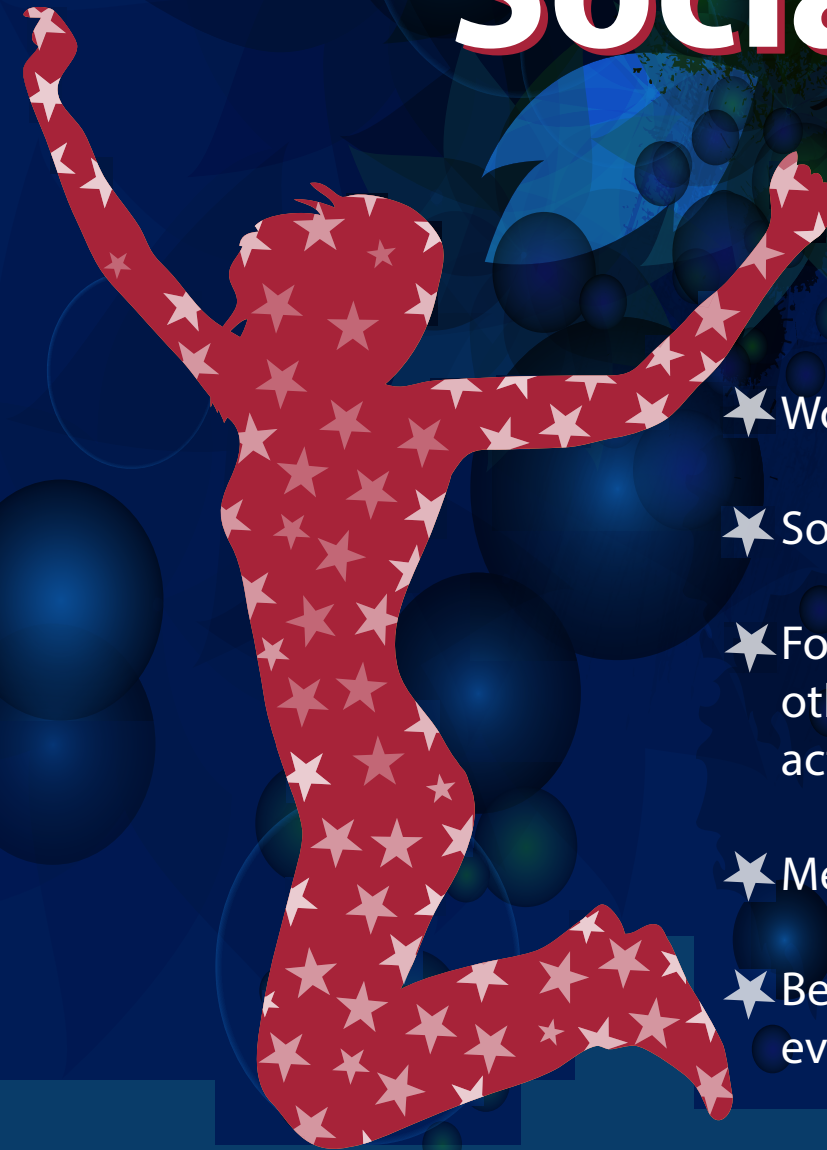
Some initial questions to facilitate the conversation might include:

- Has the student identified career interests? What are the educational requirements for jobs in that field?
- What is the best option for post-secondary education: university, community college, vocational training school, or apprenticeship programs?
- Is it the right time to continue attending school or is a gap year or internship experience a better fit?
- How is the student going to financially support him/herself? Will he/she have a part-time job or work full-time? If not attending post-secondary training, will the student begin on a career path?
- What type of housing environment helps the student feel safe and supports independent living?
- What are some circumstances that may be dangerous or promote risky behavior? How can we prepare for those situations?
- Are there spiritual connections or activities the student will participate in during transition?
- What clubs, activities, and outings are available to join for social support and relationship building?

Managing the logistics of young adulthood with the added learning curve of living independently can be overwhelming for students. Most young adults haven't experienced the responsibilities of taking care of themselves while managing financial obligations or the demands of academia. Course registration, college disability accommodations, and employment services often require advanced planning that students may not be prepared for. Encourage your student to create a timeline with goals and help him/her develop a schedule for the first month or two of his/her new adult life. Review important information and practical skills as part of your discussions. Basic proficiency in financial management, cooking a meal, roommate etiquette, and what to say during a job interview is very useful. The transition process is an opportunity to teach your adult child how to start navigating the adult world.

Prepare for the transition process early! Transition is a time of change and successful transitions come from a combination of communication and planning. Help your student with these preparations while you support him/her in learning how to go from being a high school student to being an adult. When we plan for transition, we increase the likelihood of successful independence.

Ladies Only Social Group



- ★ Women with autism 18 years old and up
- ★ Social outings based on interests
- ★ Focusing on making connections with others and exploring interest-based activities in the area
- ★ Meeting in Jupiter
- ★ Beginning in June, meets monthly in the evenings

For more information call Alison Bourdeau (561)990-9518 or email abourdeau@fau.edu

Early Intervention for ASD

Judith Aronson-Ramos, M.D.

www.draronsonramos.com

Over the past several decades, there have been many changes in the world of autism. Present terminology and diagnostic criteria have changed since last year's publication of the Diagnostic and Statistical Manual 5th Edition (DSM 5). This has resulted in the term Autism Spectrum Disorder (ASD) replacing previous diagnostic terms -Aspergers, PDD-NOS, and Autism. Despite these changes in terminology, the one constant over the years is the impact and importance of early intervention for treating ASD. (1)

Current studies have shown we can now reliably diagnose autism as young as 12-15 months of age. Given this ability to detect the earliest signs of autism, we can intervene early and profoundly impact the course of ASD. Large groups of children are experiencing better outcomes due to the impact of early intervention.

It is easy to understand why early intervention is so important and impactful. We all know the brain undergoes rapid growth and development in the first 5 years of life. During this time, the pathways controlling language, socialization and behavior are being established.

(2) Interrupting the abnormal development and reinforcing the typical milestones and development are the goals of early intervention therapies.

Early intervention therapies with the most data and evidence supporting positive outcomes include speech, occupational, physical, and behavioral therapies. Programs will consist of different combinations of these therapies to address your child's unique needs. Behavioral therapy is a broad umbrella term for different interventions aimed at targeting the child's behavior and interaction style. The goal of all of the therapies in an early intervention program is to promote the child's ability to attend to the environment, develop verbal and motor imitation skills, develop language and functional communication, learn appropriate social interaction skills, learn appropriate play skills, and develop friendships with age appropriate peers. A critical component of the early intervention process is family education and training. Family training helps insure everyone in the child's environment can work to develop his or her potential.

Some parents fear an ASD diagnosis and feel it is stigmatizing. On the contrary, early diagnosis should be viewed as an opportunity to dramatically change a child's development. To lose this window of opportunity is to miss the chance of an optimal outcome. No one would ever think of delaying treatment of cancer, infection, or injury, so why is ASD any different? Though children progress at different rates and some children undergo more dramatic positive effects than others from early intervention, with the right supports, no child is harmed by early treatment. There is only something to be gained. Intervening early can lead to a dramatic reduction in ASD symptoms.



In spite of all of this evidence, studies show diagnoses are still delayed. The average age of diagnosis of ASD in the US is still 4 years of age.(3) Parents are often the first to observe atypical development and voice concern. Unfortunately, early treatment can be derailed by medical professionals and others. This is why it is so important for parents to trust their instincts and find a team of professional with enough background and expertise in treating ASD so as not to miss the window of opportunity early intervention provides. With a diagnosis, children and families will have access to public and privately funded programs targeted for ASD. Without a diagnosis, children can be deprived of insurance coverage and specialized programs.

Early intervention provides tools and strategies which help parents to connect to their child and also serve as a vital member of the treatment team. This is empowering and promotes a positive outlook, which also influences a child's progress. Remember "A pessimist is one who makes difficulties out of his opportunities, and an optimist is one who makes opportunities out of his difficulties." – Harry S.Truman

For more information about red flags and earliest signs of ASD, visit:

www.draronsonramos.com

www.firstsigns.org

www.autismspeaks.org

1. Dawson G. Early behavioral intervention, brain plasticity, and the pre-vention of autism spectrum disorder. *Dev Psychopathology* 2008;20:775Y803.
2. Zwaigenbaum L, Bryson S, Rogers T, Roberts W, Brian J, Szatmari P. Behavioral manifestations of autism in the first year of life. *Int J Dev Neuroscience*. 2005;23:143Y152.
3. Shattuck P, Durkin M, Maenner M et al. The timing of identification among children with an autism spectrum disorder: findings from a population-based surveillance study. *American Academy Child Adolescent Psychiatry*. 2009; 48:474Y483

FAU CARD ANNOUNCES AUTISM FRIENDLY BUSINESS INITIATIVE!!



Autism Friendly Business

The Autism Friendly Business (AFB) program's goal is to increase community inclusion, improve acceptance and create opportunities for people with autism. We are providing education for businesses to change perceptions and spread tolerance. The AFB program will include trainings for businesses in customer and employer support. Customer support trainings benefit businesses by having front-line staff gain a greater understanding of autism and how to interact with customers in a supportive and non-judgmental way. Employer support trainings are for supervisors and company administrators who are looking for education in relation to supporting and expanding their team of employees diagnosed with autism. A key aspect of the AFB program will be to develop and implement a strategy of support at the business.

Upon completion of AFB training, FAU CARD will provide the company with a decal or certificate of completion. Companies will also be included in a business directory on the FAU CARD website that will acknowledge them for completing the training and showcase the strategy implemented as result of their participation in the training. Social stories and visual supports will be viewable and printable by families before going to the place of business. The Autism Friendly Business program will not only increase business for participating companies and improve community inclusion, but help families locate and engage with members of the community that are understanding and knowledgeable of their needs!

For more information on how you can become an Autism Friendly Business, please contact: Jennifer Pollack at jpollack@fau.edu or 561-212-4203.

Adult Social Groups

Adults with an autism spectrum disorder ages 18 and older are welcome. Groups will meet at various community locations to discuss issues, problem solve, and form friendships. Locations will be determined prior to outing date. Any costs associated with participation in the outing are the responsibility of the adult participant, as well as transportation to and from the outing.

Boca Raton

7:00 - 8:30 pm

Monday, May 18
Monday, June 15
Monday, July 20
Monday, August 17

For questions, contact Veronica Castro (561) 213-8381 or by email castrov2014@fau.edu

Jupiter

7 - 8:30 p.m.

Friday, May 29
Friday, June 26
Friday, July 24
Friday, August 28

For questions, contact Alison Bourdeau (561) 990-9518 or by email abourdeau@fau.edu

Treasure Coast

7 - 8:30 p.m.

Thursday, May 14
Thursday, June 11
Thursday, July 9
Thursday, August 13

For questions, contact Cathy Allore (772) 873-3367 or by email callore@fau.edu



Register

Wednesday, June 24

11 a.m. - 3 p.m.

Register: <https://tcsafety.eventbrite.com>



Indian River State College Treasure Coast Public Safety Training Complex
4600 Kirby Loop Road
Fort Pierce, FL 34981
Phone: 772-873-3367



Email: callore@fau.edu



www.autism.fau.edu

FAU
CENTER FOR AUTISM AND
RELATED DISABILITIES
Florida Atlantic University

Conference Training Objectives

- ✓ Increase Officer, First Responder and Citizen Safety
- ✓ Enhance Communication and Response Skills
- ✓ Save Valuable Time and Resources
- ✓ Build Community Partnerships
- ✓ Avoid Litigation



Meet the Trainers

Dennis Debbaudt

Lt. Bart Barta, Coral Gables Police Department

Master Officer James Cozine, Fort Pierce Police Department

Firefighter-Paramedic Pete Villasuso, Saint Lucie County Fire District

Special Thanks to IRSC for Co-sponsoring the event

The FAU Center for Autism and Related Disabilities (CARD) provides expert consulting, training and support, at no charge, for people with autism and related disabilities, their families and the professionals serving them. CARD's goal is to optimize the potential of the individuals we serve by helping them become valued members of their communities, enabling them to learn, work, communicate and socialize. Visit us at: www.autism.fau.edu If an accommodation(s) for a disability is required, please call 561-297-2055 or e-mail us at CARD@fau.edu, a minimum of 5 working days in advance of the date of the event.

TRAININGS

UNLESS OTHERWISE INDICATED, ALL TRAININGS WILL ALSO BE AVAILABLE ONLINE

Mentor Information-Session

Come and learn about our NEW exciting iRISE2 Mentoring Program and how you can become a mentor for amazing individuals with autism and related disabilities

During this info-session participants will be provided with an overview of our iRISE2 Mentoring Program, while discussing the role of an iRISE2 mentors, program requirements and screenings procedures.

For more information:
Darius Murray
Dmurra23@fau.edu
(561) 213-6936

**SATURDAY
MAY 9**
10 - 11:30 a.m.

Boca Campus, College of Education, Room 411
<https://mentor-info-session.eventbrite.com>

iRISE²



Developing Leisure Skills

**THURS
MAY 14**
3 - 4:30 p.m.

Participants will learn how to increase leisure skills for individuals with Autism Spectrum Disorders. (*onsite only)

IRSC-St Lucie West Campus, Building D suite 115
<https://leisureskills.eventbrite.com>



Autism Awareness 5K RUN/WALK 2015



Register: <http://goo.gl/BPBN59>

when

Saturday, May 16

where

Jonathan
Dickinson
State Park
16450 SE Federal Highway
Hobe Sound, FL 33455

time

7:30-9:30 a.m.

FAU
CENTER FOR AUTISM AND
RELATED DISABILITIES
Florida Atlantic University

The FAU Center for Autism and Related Disabilities (CARD) provides expert consulting, training and support, at no charge, for people with autism and related disabilities, their families and the professionals serving them. CARD's goal is to optimize the potential of the individuals we serve by helping them become valued members of their communities, enabling them to learn, work, communicate and socialize. Visit us at: www.autism.fau.edu If an accommodation(s) for a disability is required, please call 561-297-2055 or e-mail us at CARD@fau.edu, a minimum of 5 working days in advance of the date of the event.

Practicing Behavior Analysis within Professional Ethics and Standards

Saturday, May 16

9 a.m. - 4 p.m.

FAU Jupiter Campus, Lifelong Learning Center

Event Description: This will be an interactive 6 hour workshop. It will provide a general overview of upcoming revised Code of Ethics and the professional complaint process of the BACB. It will also cover basic ethical considerations in such areas as: terminating services, using media and technology, business practices, multiple relations, competence and evidence-based practice. Participants will participate in case discussions depicting ethical dilemmas and will role play scenarios addressing an array of ethical concerns.

Participants will:

- Identify main revisions to the Code of Ethics of the BACB
- Summarize the professional complaint process of the BACB
- Enumerate basic conditions for terminating services
- Identify essential safeguards in the use of electronic media
- Describe their ethical responsibility to colleagues
- Identify at least 3 essential measures to conduct an ethical professional business

Haydee Toro, Ph.D., BCBA-D

Haydee Toro has worked for over 25 years as a behavior analyst for state government social services in South Florida. She received her Ph.D. from University of Vermont and obtained post-doctoral training in behavioral pediatrics and behavior analysis at the Kennedy-Krieger Institute. She is a licensed psychologist in Florida and a Board Certified Behavior Analyst. Dr. Toro has taught courses in Applied Behavior Analysis in the Psychology Department of Florida International University. She is a past president of the Florida Association for Behavior Analysis and served as a member of the Behavior Analyst Certification Board for two consecutive terms. Dr. Toro often presents on the topic of ethics in behavior analysis at professional meetings and continuing education events.

 **Register: <http://abaethics.eventbrite.com>**

6 BCBA CEUs will be available. \$75 for advanced payment; \$90 onsite payment.

Required BCBA ethics CEUs will be met by this workshop.

The FAU Center for Autism and Related Disabilities (CARD) provides expert consulting, training and support, at no charge, for people with autism and related disabilities, their families and the professionals serving them. CARD's goal is to optimize the potential of the individuals we serve by helping them become valued members of their communities, enabling them to learn, work, communicate and socialize. Visit us at: www.autism.fau.edu If an accommodation(s) for a disability is required, please call 561-297-2055 or e-mail us at CARD@fau.edu, a minimum of 5 working days in advance of the date of the event.

Parent and Youth Program Orientation



iRISE²

This orientation will provide parents and youth with a complete introduction to our NEW iRISE2 Mentoring Program. We will discuss the mission, program goals, ground rules and the eligibility requirements for youth interested in enrolling into our New iRISE2 Mentoring Program.

FAU Boca Campus, College of Education, Room 411

<http://irise2-parent-orientation.eventbrite.com>



**THURS
MAY 19**
11 a.m. - 12 p.m.



Planning Ahead - Strategies for Successfully Coping with Hurricane Season and More: A Guide for Parents and Professionals



This training will provide participants with the tools necessary to support their individuals with autism and related disabilities to prepare for a hurricane and/or other disasters. We will create a safety plan with the expert assistance of first responders. Knowing what to do is your best protection. (*onsite only)



FAU Jupiter Campus

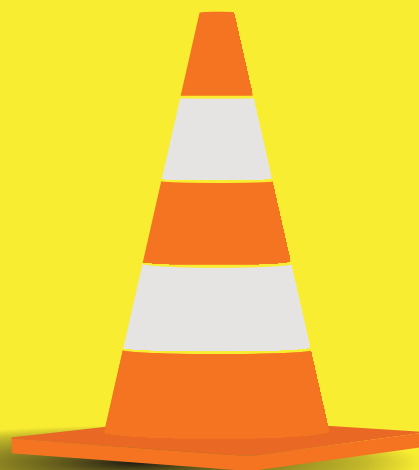
<http://planning-ahead.eventbrite.com>

Autism & Safety

FRIDAY
MAY 29
12 - 1:30 p.m.

The training will focus on common safety issues related to children and adults on the autism spectrum, and provide examples of ways to prepare and manage related issues. (*onsite only)

FAU Jupiter Campus
<http://autismandsafety.eventbrite.com>



Vocational Rehabilitation Services

FRIDAY
MAY 29
10 - 11:30 a.m.

This informational training will help students and families be better prepared to navigate the Vocational Rehabilitation (VR) process. Participants will learn VR terminology, what documents to bring to an intake meeting, what questions to ask when meeting with a VR Counselor. Participants will also understand the steps to receive VR services and how to develop an Individual Plan for Employment. Participants will leave with a greater understanding of the VR process and how VR can play a key role in a transition.

FAU Boca Campus, College of Education, Room 411
<http://vocationalrehabitationservices.eventbrite.com>

Avoiding the “Summer Slide”

Summer is fast upon us! Please join us as we discuss activities, strategies and supports to use in the home to help your child maintain the skills they have worked so hard to acquire during the school year.



WEDNESDAY
JUNE 3
10:30 a.m. - 12:30 p.m.

FAU Boca Campus, College of Education, Room 411
<http://summerslide.eventbrite.com>

My Child Has Autism Spectrum Disorder... Now What?

Parents whose children have recently received a diagnosis or educational eligibility of Autism Spectrum Disorder (ASD) with a chance to explore questions, hopes, dreams, fears, and concerns related to ASD in a safe environment.

Part 1: Understanding the “A-word”: Making Sense of My Child’s New Diagnosis of Autism Spectrum Disorder (June 12)

Part 2: Creating an Action Plan and Accessing Resources (Date TBD)

Part 3: Success Starts with Me: What Can I Do To Be a Better Parent to My Child with ASD (Date TBD)

Part 4: Enjoying My Child: Strategies for Improving the Parent-Child Relationship (Date TBD)

All parents and caregivers of individuals with ASD are welcome to attend one or more parts of this workshop series. This series may be most helpful for parents of children between 15 months and 5 years of age who have been recently diagnosed with ASD.

FRIDAY
JUNE 12
9 - 11:30 a.m.

FAU Boca Campus, College of Education, Room 411
<http://making-sense-of-the-autism-diagnosis.eventbrite.com>

**FRIDAY
JUNE 26**
1 - 2:30 p.m.

FAU Jupiter Campus
<http://socialstoriestraining.eventbrite.com>



Increasing Independence



Participants will learn how to identify skill deficit areas, skills to be increased, and how to teach those skills.
(*onsite only)

**THURS
JULY 9
3 - 4 p.m.**

IRSC-St Lucie West Campus, Building D suite 115
<http://independencepsl.eventbrite.com>

TUESDAY JULY 14
10:30 a.m. - 12:30 p.m.

The sibling relationship is critical not only in childhood, but throughout the lifespan. Siblings are often our first and longest lasting relationships. In this training, we will discuss the unique relationship between siblings, strategies for explaining an ASD diagnosis to your other children, common reactions of siblings to a disability, as well as a variety of other topics related to the sibling relationship. We hope to see you there!

FAU Boca Campus, College of Education, Room 411
<https://supportingsiblings.eventbrite.com>



THANK YOU FOR MAKING WINGS OF HOPE 2015 A SUCCESS





Pre-Employment Series: Resume Development and Soft Skills Training

This series of workshops is intended to enhance the professional development skills of individuals on the autism spectrum. Adolescents and adults with ASD are encouraged to attend one or both of these workshops.

**FRIDAY
JULY 17**
10 - 11:30 a.m.

Prepare for your job search! Pre-employment strategies, résumé development and a review of soft skills will be offered in this training.

Jupiter Campus
<http://pre-employment.eventbrite.com>

Transitioning for Unfamiliar Events

**FRIDAY
JULY 24**
12 - 1:30 p.m.

This training will focus on preparing for unfamiliar events like doctor's appointments, family trips, etc. Strategies will be introduced and discussed to set the child/adult up for success, and resources will be provided.

Jupiter Campus
<http://transitioningunfamiliar.eventbrite.com>



SUMMER

ACADEMY

Monday, July 27 and Tuesday, July 28
9 a.m. - 3 p.m.

**FAU Jupiter Campus
Lifelong Learning Center**

Training Opportunity for Teachers & Professionals

**Building with Blocks to Build Baby’s Language Skills:
Using Play to Develop Communication**

FAU Boca Campus, College of Education, Room 411
<https://building-language-through-play.eventbrite.com>

**FRIDAY
AUGUST 7**
9 - 11:30 a.m.

This two-part workshop is designed to teach parents to strategically use play to build communication skills in their toddlers and preschool-aged children. Parents will attend this workshop together with their young child between the ages of 9 months and 4 years.

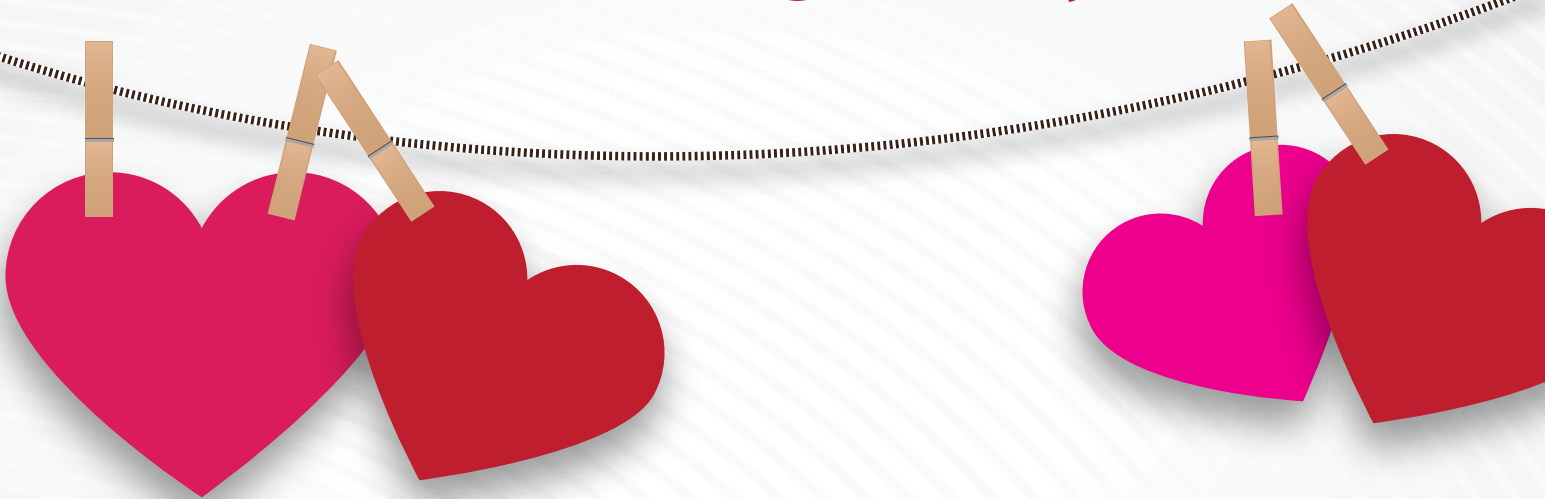
In Part 1 (9:00 a.m. - 10:15 a.m.), parents will learn evidence-based strategies to build communication skills through play (childcare will be provided). In Part 2 (10:15 a.m. -11:30 a.m.), parents will practice what they have learned in realistic play activities with their children and receive live coaching and feedback from the instructor.

Professionals working with this age group are also welcome to attend and observe parent coaching strategies.

****This workshop is limited to a maximum of 6 families in order to facilitate individualized coaching and feedback.**** (onsite only)

COMING SOON

Adult Dating Survey



This survey will ask adults with ASD to explore aspects of the dating relationship process. Questions will explore how to engage in safe and healthy relationships. Guided by the survey results, training on adult dating will be provided this summer. For any questions, please contact Veronica A. Castro, LCSW, Clinical Support Specialist, at 561-213-8381 or castrov2014@fau.edu.

Introduction to Applied Behavioral Analysis (ABA)



This training will provide participants with an introduction to Applied Behavioral Analysis (ABA). We will discuss the principles of behavior and how the methodology is used for behavior intervention and skill development. *(*onsite only)*

**FRIDAY
AUGUST 28**
12 - 1:30 p.m.

FAU Jupiter Campus
<http://introductiontoaba.eventbrite.com>

Improving Interview Skills Training

Adults with autism are encouraged to attend this workshop, which is intended to help strengthen the interview and communication skills needed when seeking employment in the community. There will be an extended portion of this workshop which will allow participants the opportunity to practice the skills discussed by participating in mock interviews with a business leader and/or professional corporation from our local community. Parents are welcome to attend to learn how they can help their young adults prepare for the interview process.



Date and time to be determined. For more information, please contact Darius Murray, Clinical Support Associate, at 561-213-6936 or dmurra23@fau.edu.

SUPERVISED CHILD CARE AT FAMILY CONNECTIONS CONFERENCE A SUCCESS!
Rosemary Portera

There was no need to leave the kids home at this year’s Family Connections Conference! It was the first time that FAU CARD was able to provide supervised care for children while their parent who participated in the conference learned about ways to reduce stress at home and school. CARD enlisted the expert services of Susan “Fun” Foley, Innovative Leisure, Inc., and a corps of well trained volunteers. The day for the kids was a fun-filled recreation-based day where the children were matched with their very own ‘fun’ facilitator. Also on hand was FAU CARD Assistant Director, Elisa Cruz-Torres, who is a Board Certified Behavior Analyst. Children with ASD were eligible for supervised care were between the ages of 7-18 years old. Cost was set at \$20 for the first child and no charge for the second child. Space was limited to 15 children and per-registration was required. The children joined their parents for a delicious bagged lunch, provided by Butterfly Effects and ice cream, provided by Blue Bell Creameries.



The conference and supervised care took place at The FAU Lifelong Learning Complex in Jupiter and allowed the children ample space to play an engage in age appropriate activities. Two “zones” provided opportunities for the children to create, play games, meet their sensory needs, move to music and enjoy active outside play. The day ended on a very meditative note with a children’s yoga class lead by special needs yoga instructor, Izabela Piasecka from Pura Vida Yoga in Boca Raton.

Here’s what some of our parents had to say about supervised care:

“First THANK YOU for such a wonderful event, I got a lot out of it and my son did AWESOME!!! That was the icing on the cake as they say.”

“It was the BEST \$20 I ever spent!!!! I was so worried he would not do well, so I brought my own entourage and did not need them.”

“The volunteers/staff did an awesome job of making that long day fun and enjoyable.”

“What I can tell you is that both my kids asked if we can do that every weekend because they had so much fun.”

FAU CARD was thrilled to be able to premiere supervised care at their Family Connections Conference! The hope is that in providing children with ASD a safe recreation-based day, families who have been unable to attend in the past an opportunity, will be able to do so in the future.



Family Connections Conference
Reducing Anxiety and Stress For Caregivers and Children



FAU CARD Family Connections Conference luncheon was made possible by Butterfly Effects and we gratefully acknowledge their contribution to educating the public about autism.



THANK YOU!

SPOTLIGHT ON ADULTS WITH AUTISM SPECTRUM DISORDERS

Cathy Allore



In my job as Clinical Support Specialist with FAU CARD, I meet a lot of parents, kids, and even adults who fall somewhere along the autism spectrum. One of those individuals I met 2½ years ago. His name is Malcom and he lives in St. Lucie County.

When I met Malcom, it was his first encounter with FAU CARD. He was referred by a parent of a teen with autism whom I had been working with extensively on communication. Malcom, however, did not have that need! Malcom is a strong and articulate communicator and that skill is working to his advantage as a young adult with autism and cerebral palsy. Malcom had two dreams when he came to see me those years ago- he wanted to meet others like him who he could have real conversations with and he wanted to work. I immediately recommended he participate in the Adult Social Group on the Treasure Coast.

As I have gotten to really know Malcom, I have found that he has a great dream that of being a sportscaster. He loves sports, is a strong communicator, and has enhanced his social skills over the years. Malcom is an ambassador for Special Olympics, often speaking on his ongoing experiences of interacting and participating in the various sports of Special Olympics. Last year, Malcom was a speaker at the annual Family Café Disabilities Expo in Orlando, FL. He made a speech and then proceeded to answer unrehearsed questions from the session attendees. View the video of that presentation: <http://alturl.com/hf4iz> Malcom became a member of a self-advocacy group called Stand Up For Independence and in March he accompanied the group to Tallahassee for Developmental Disability Awareness Day, where he met Governor Rick Scott.



Malcom has had numerous opportunities to engage in public events. In 2014, CBS 12 gave him the opportunity to interview some of the players of the Miami Marlins during Spring Training. He was given this opportunity again this year. Check him out here: www.cbs12.com/sports/stories/vid_1547.shtml Malcom has also been able to commentate for the Treasure Coast Bengals Semi-Pro Football team and recently visited with Michael Williams at WPTV in West Palm Beach. After his tour of the station, he was informed he will be getting the opportunity to intern with WPTV News.



Malcom graduated from Fort Pierce Central High School in 2007, attended IRSC in Fort Pierce for 5 years and came out of it with a Certificate in Business Management. He then began to volunteer at St. Lucie Medical Center, a year and a half ago, transitioned into a part-time paid position with the center. He's been a paid employee of St. Lucie Medical Center for the past year and a half!

Malcom says when he speaks to others about their dreams, he relays one message: "Don't give up. It might take you longer than someone else to reach your goal, but that doesn't mean you can't do it." Malcom is not sitting by and waiting for opportunities to present themselves....Malcom is out creating them!!

NEW ABA THERAPY PROVIDER!



Project Brilliance is an ABA therapy company committed to providing the best quality, ethical and most innovative ABA therapy to children 0-6, on the autism spectrum and related disabilities, all the while striving to set a standard of care in the field. We aim to not only help children gain valuable skills, but to also help their families lead fulfilled and successful lives together. We offer ABA therapy at our center, in the home or in the community. Please visit our website www.projectbrilliance.com for more information about us and our services.

TREASURE COAST PARENT SUPPORT GROUPS:

Puzzled Families of Indian River County

Puzzled Families is a parent support group that meets to provide support and information for parents of individuals with autism spectrum disorders.

When: 2nd Monday of each month from 6:00 – 8:30 PM
Where: Sun Up Center, 2455 5th Street SW, Vero Beach, FL

<https://www.facebook.com/pages/Puzzled-Families-of-Indian-River/122076224542183>
RSVP: puzzledfamilies@gmail.com

Puzzled Families of St Lucie County

Puzzled Families is a parent support group that meets to provide support and information for parents of individuals with autism spectrum disorders.

When: 2nd Thursday of each month from 6:00pm – 7:30pm
Where: Community United Methodist Church, 3114 Okeechobee Rd, Fort Pierce, FL

<https://www.facebook.com/pages/Puzzled-Families-of-Indian-River/122076224542183>
RSVP: puzzledfamilies@gmail.com

Disability Support Network of the Treasure Coast

Disability Support Network is a parent support group meeting to provide support and information for parents of individuals with special needs, not specifically for those living with autism spectrum disorders.

When: 3rd Thursday of each month from 7:00pm-8:30pm in either Martin or St Lucie.
Where: TBA at a local restaurant. Like them on Facebook for meeting notifications.

RSVP: puzzledfamilies@gmail.com
<https://www.facebook.com/groups/131030553607709/>

S.O.U.L. (Supporting, Overcoming, Understanding, & Loving)

Meets in Martin County and is for those families living with autism spectrum disorders. This is not a religious meeting, but for education and q & a. The goal of the group is to provide resources to those families attending.

When: 1st Monday of the month from 6:30pm-8:00pm.
Where: Covenant Fellowship Church @ 2880 SE Aster Lane in Stuart.

For More info contact Rhonda Oksman, Founder/Facilitator
Email: rhonda.oksman@gmail.com
<https://www.facebook.com/SoulSupportGroup>



Parenting is hard! There are no instruction manuals. There's definitely NOT an app for that! Add to this already difficult job the responsibilities for caring for a child with special needs. Then, compound it by also having a child without special needs. Parents have to make sure their child with the disability is getting their therapeutic and medical needs, while also making sure the sibling without special needs is also getting their emotional needs met and being open to their feelings of having a sibling with disabilities.

Often times, siblings (sibs) who have a brother or sister with special needs have to compete for their parents' attention. No matter how hard we try to give them the same amount of attention as we do their sibling with special needs, sometimes we fall short in that department. So, how do we handle this? I chose to encourage Megan to not lose who she was or wanted to be. She participated in Girl Scouts from the time she was in kindergarten until she graduated high school. This was something she wanted to be a part of because it gave her an escape from the rigors and, at times, exhausting job (yes job!) of being Ian's sister. She also participated in various school activities, one of which was writing for the school newspaper where she occasionally chose to write about Ian.

I also encouraged Megan to be herself and do what she wanted but sometimes that was tough. For example, there were times I couldn't provide transportation for both her and Ian's activities. Thankfully, Megan had a wonderful group of friends with supportive parents who were able to assist with pick-up or drop-off to activities or events. Was she bitter or angry at times? ABSOLUTELY! But Megan knew it was okay and that she didn't love her brother any less. She enjoyed each and every accomplishment Ian made and continues to be his most verbal and his fiercest cheerleader! I truly believe that by letting Megan be herself, she was able to solidify the great relationship she has always shared with her brother.



There are quite a few great resources for sibs to get their emotional needs met right alongside other sibs who share this 'life' with them. The first of those is attending a SibShop®. Created by Don Meyer, Sibshops® are celebrations of the many contributions made by brothers and sisters of kids with special needs. Sibshops® are geared toward school aged children. More information about this program can be found on the Sibling Support Project's website: www.siblingsupport.org.

A variety of books targeting siblings of individuals with special needs are available as well (see Sibling Book List). Megan read and wrote a review of The Sibling Survival Guide and also used the book's information recently to participate in and contribute to the future planning needs discussed by our family in regards to her brother, Ian.

Other resources to support the emotional needs of adult typical sibs can be found in this newsletter. Please share these resources. We need to let the sibs know they are not alone in this!



ADULT SIBLING RESOURCES

SIBNET:

This is a closed group. You need to ask to be added. This group is hosted by the Sibling Support Project in Partnership with the Sibling Leadership Network. It is also moderated by Don Meyer.

<https://www.facebook.com/groups/SibNet/>

FLORIDA SIBLING ALLIANCE:

This is a closed group. You need to ask to be added. This group is only for Sibs in Florida and is for support by Sibs for Sibs, again for adult Sibs. If you just need to vent, cry or be understood by others who 'get it'. Also, here's a link to FB Page. You only have to LIKE this page to get Access.

<https://www.facebook.com/groups/FloridaAllianceForSiblingAdvocates/>

SIBLING LEADERSHIP NETWORK:

This is a closed group. You need to ask to be added. The mission of the Sibling Leadership Network is to provide siblings of individuals with disabilities the information, support, and tools to advocate with their brothers and sisters and to promote the issues important to them and their entire families.

<https://www.facebook.com/groups/sibling.leadership.network/>

LOCAL SIBSHOP® GROUPS:

MIAMI SIBSHOP®

Primary Contact: Jessica Spence

REACH of Miami

9501 SW 20th Terrace
Miami, FL 33165
Phone: 808-321-3814

SLOMIN FAMILY CENTER SIBSHOP®

Primary Contact: Jeffrey Zirulnick

16705 Puzzle Place
Delray Beach, FL 33446
Phone: 561-495-4443
www.slominfamilycenter.org

PBBHW SIBSHOP®

Primary Contact: Brandi Rials

Palm Beach Behavioral Health and Wellness

345 Jupiter Lakes Blvd, Ste 302a
Jupiter, FL 33458
Phone: 561-429-2397
www.pbbhw.com

BROWARD COUNTY SIBSHOP®

Primary Contact: John Kabot

Supporting the Spectrum

3055 NW 126th Avenue
Sunrise, FL 33323
Phone: 954-829-9018

JAFKO SIBSHOP® SERIES

Primary Contact: Linda Sachs, LCSW

JAFKO

4200 N. University Drive
Sunrise, FL 33351
www.jafco.org

PALM BEACH COUNTY SIBSHOP®

Primary Contact: Daniella Robbins

PBC Parks/Rec & ARC of PBC

2728 Lake Worth Road
Lake Worth, FL 33461
Phone: 561-966-7088

PALM BEACH COUNTY SPEAKS

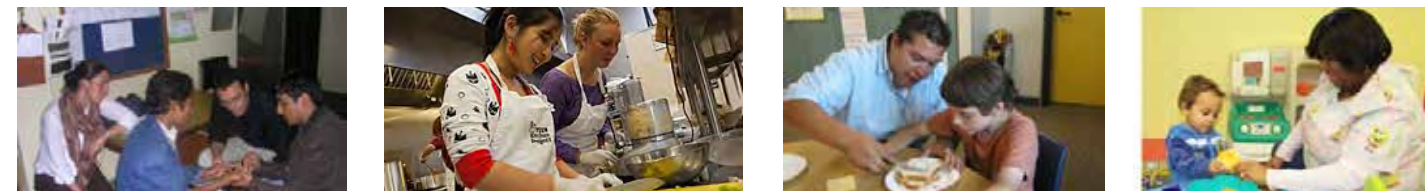
GIVING A VOICE TO THOSE WHO ARE OFTEN NOT HEARD AND ARE UNDERESTIMATED

Are you a parent or a caregiver of children or adults with special needs, mental health issues or disabilities? If so, the Unicorn Children’s Foundation invites you to take a community needs survey on special needs and disabilities. This survey was created to identify the strengths and limitations of services for individuals with special needs in Palm Beach County. Survey questions relate to the services your child is receiving and whether they are as helpful to you as they can be. By answering the questions in this survey, you will help improve the quality of services available and find out how much money is needed for programs/services for children with special needs in Palm Beach County.

Survey available online from April 15 - May 20, 2015

Visit: <http://sgiz.mobi/s3/Parents-Caregivers-Survey>

Paper copies of the survey are available by request to Amy Newton at (954) 561-9681 extension 1244.



PALM BEACH COUNTY SPEAKS

GIVING A VOICE TO THOSE WHO ARE OFTEN NOT HEARD AND ARE UNDERESTIMATED

Florida State University Autism Institute invites you to participate in an exciting research project. Through this study, we hope to gain insight into the abilities and challenges faced by adults with autism spectrum disorder (ASD). We also hope to learn how thoughts and moods may be related to social, living, and vocational skills and satisfaction for those with ASD. We are interested in collecting this information from individuals 18 years of age and older who have been diagnosed with ASD. You are being asked to complete a questionnaire online that asks about your thoughts, feelings, and experiences.

Who can participate in this study?

- Adults (individuals 18 years old and older) who have been diagnosed with ASD.
- Must have a high school degree or equivalent.
- Participants must be legally permitted to make decisions for themselves and not be under the guardianship of another individual.

What does participation in the study involve?

- The questionnaire is divided into two parts. Part 1 asks about your daily activities and use and access to resources; Part 2 asks about your thoughts and moods. You can choose whether you want to continue to Part 2 if you complete Part 1.
- Participation is voluntary, and participants are free to refuse to answer questions that cause discomfort. Participants may also withdraw from the study at any time.
- Each participant will be assigned an identification code and all data collected online will be associated with this code and stored on a web server with encrypting and password protection in compliance with HIPPA regulations.
- Participants who indicate risk of harming themselves will be contacted for a more thorough evaluation. If necessary to ensure the individual's safety, appropriate agencies may be contacted to provide assistance.

Visit: https://fsu.qualtrics.com/SE/?SID=SV_9MNjiYmj3uAn5pH

Contact the FSU Institutional Review Board at (850) 644-8673.

SIBLING BOOK LIST

FOR ELEMENTARY AGED SIBS:

- Living with a Brother or Sister with Special Needs
- Oh Brother: Growing up with a brother with special needs
- My Brother Charlie
- Andy and his Yellow Frisbee
- Ian’s Walk: A Story about Autism
- The Best Worst Brother

BOOKS FOR TEENS:

- The Sibling Survival Guide
- Thicker Than Water: Essays by Adult Siblings of People With Disabilities
- The Sibling Slam Book
- Rules
- The Summer of the Swans

BOOKS FOR ADULTS:

- The Sibling Survival Guide
- Thicker Than Water: Essays by Adult Siblings of People With Disabilities

BOOKS FOR ALL AGES:

- Siblings and Autism
- Special Brothers and Sisters
- Way to go Alex
- Everybody Is Different
- Autism Through a Sister’s Eyes

VIDEO-BASED AUTISM TRAINING SERIES



AutismCollection.com is a video-based autism training series was created for parents and educators who care for and teach children with autism on a daily basis. This training series zeroes in on the everyday challenges that children with autism face like making friends, expanding interests and more.

Developed in collaboration with Thomas M. Caffrey, M.Ed., BCBA, the critically acclaimed series provides users with hands-on, research-based procedures necessary to help children with autism unlock their full potential. Tom has traveled the world providing workshops to parents and teachers and has even presented at the annual statewide CARD Conference! Now, the practical and proven techniques he teaches are available to you, any time, anywhere.

Over 15 years of case-study video enhance the learning experience by actually showing you how the research-based procedures work. Learn more about this training series here: www.AutismCollection.com

FAU CARD HELPS CONNECT NOVA UNIVERSITY INTERNS WITH SCENTSABILITY



On March 18th, FAU CARD joined Nova University Occupational Therapy interns as they spent the afternoon at ScentsAbility! The interns included Sam Miller, Rucha Patel, and Karli Baumgartner. During the visit they were accompanied by their professor, Dr. Sonia Kay.

ScentsAbility is a 501C3 Microenterprise located in Coral Springs, Florida where adults with developmental disabilities are employed making candles. ScentsAbility's motto is "Lighting the path to independence one candle at a time." The ScentsAbility employees make candles from scratch for various occasions and they also sell "magic candles" at fairs and festivals throughout the region. The Nova University interns had the opportunity to observe the candle making process. The procedure to

make candles includes many physical steps and the interns were able to provide suggestions and interventions during the visit. The interns will also be following up with ScentsAbility and providing a report that with recommendations and strategies. Jennifer Pollack was very excited to facilitate this collaboration and feedback from both the interns at Nova University and staff at ScentsAbility's on the visit was extremely positive!



To learn more about ScentsAbility, please visit:
<http://scentsability.org/>

Children's Friendship Training

Now Available at both FAU Jupiter and FAU Boca Raton Campuses!



The FAU Communication Disorder Clinic (CDC) offers social skills groups for children in 2nd to 6th grade and their parents.

What Is Children's Friendship Training?

An evidence-based social skills treatment group where children learn how to make and keep friends. Parents attend to learn how to support their children in friendship development.

Who Can Attend?

Children in 2nd to 6th grade who have Autism Spectrum Disorder or a related disability. This group is appropriate for children who have fluent verbal language skills are able to follow basic classroom rules, and have average to above average cognitive abilities.

When Will The Group Occur?

The treatment is 12 weeks long and will meet every Tuesday evening from 5:30 p.m. to 6:45 beginning June 2, 2015.

Where Will The Group Occur?

FAU Jupiter Campus:
5353 Parkside Dr.
Jupiter, FL 33458

How Much Will It Cost?

A charge of \$30/session, a total of \$360 for the 12-week program.

Why Are Parents Involved?

The Children's Friendship Training program is unique in its inclusion of a parent group, which is a requirement of the program, so that parents can provide support and coaching to their child as friendship skills are developed.

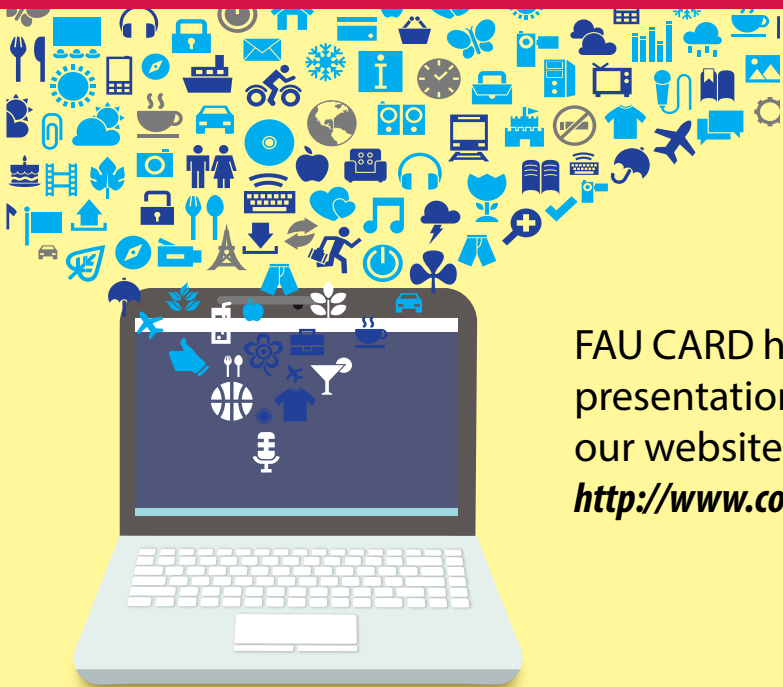
To apply for Summer 2015, please complete a confidential interest form by clicking on this link or visit:
<http://tinyurl.com/mvfabtc>

For more information, contact:

FAU Jupiter:
Noelle Balsamo, M.Ed., BCBA
561-212-4930 or nbalsamo@fau.edu

Children's Friendship Training is an evidence-based treatment program developed by Fred Frankel, Ph.D., ABPP, and Robert Myatt, Ph.D. at the UCLA Semel Institute for Neuroscience and Human Behavior to teach elementary school-aged children with high functioning ASD and other social difficulties how to make and keep friends. Some of the topics that will be addressed over the course of treatment include: Conversational skills, Finding common interest, Joining games, Good sportsmanship, Changing your reputation, Appropriate play-date behavior, Handling teasing and bullying, and Managing conflicts with adults and peers.

FAU CARD ONLINE TRAININGS



FAU CARD has developed this library of online training presentations that are available for you to view. Visit our website:

<http://www.coe.fau.edu/centersandprograms/card/tutorials.aspx>

- Overview of Autism Spectrum Disorders
- Toilet Training
- Enhancing Engagement in Science
- ASD & the Reading Comprehension Challenge: What Can You Do?, Created by UM-NSU CARD
- Guardianship Options
- Count on it! Strategies to Teach Math Skills to Students with ASD, created by UM-NSU CARD

Behavior Series

- **Part 1:** Understanding Why Problem Behaviors Occur
- **Part 2:** Building Play and Leisure Skills
- **Part 3:** Environmental Setup and Visual Strategies
- **Part 4:** Developing Requesting and Protesting Skills
- **Part 5:** Token Economies and Behavioral Contracts

We would like to express our most sincere gratitude to all of the families and professionals who continue to support FAU CARD.

If you or your organization would like to contribute to FAU CARD, donations can be made out to:



FAU Foundation - CARD

and mailed to our office at:

**FAU CARD
Department of ESE
777 Glades Road
Boca Raton, FL 33431**

Or visit:

<https://fauf.fau.edu/NetCommunity/SSLPage.aspx?&pid=1151>

and select Center for Autism & Related Disabilities (C.A.R.D.) as the designation



**CENTER FOR AUTISM AND
RELATED DISABILITIES**
Florida Atlantic University

As of 2014, 1 in 68 children are diagnosed with an autism spectrum disorder.

Who We Are:

The FAU Center for Autism and Related Disabilities (CARD) provides expert consultation, training and support, at no charge, for people with autism and related disabilities, their families and the professionals serving them. CARD's goal is to optimize the potential of the individuals we serve by helping them become valued members of their communities, enabling them to learn, work, communicate and socialize.



In 2014, FAU CARD served over 3,500 individuals in Palm Beach, Martin, Indian River, St. Lucie and Okeechobee counties.

Services We Provide:

- *Developmental screenings*
- *Social skills groups for children with autism*
- *Social groups for adults with autism*
- *Consultation with families*
- *Regional trainings hosting experts in the field for families and professionals*
- *Annual Family Connections Conference*
- *Summer Academy for professionals*
- *Public education*
- *Mentorship program*
- *And much more...*

Did You Know? Individuals with autism often have a restricted area or areas of interests that can be further developed to focus on the development of leisure skills, coping strategies, or employment

Visit: www.autism.fau.edu
Call: 1.888.632.6395