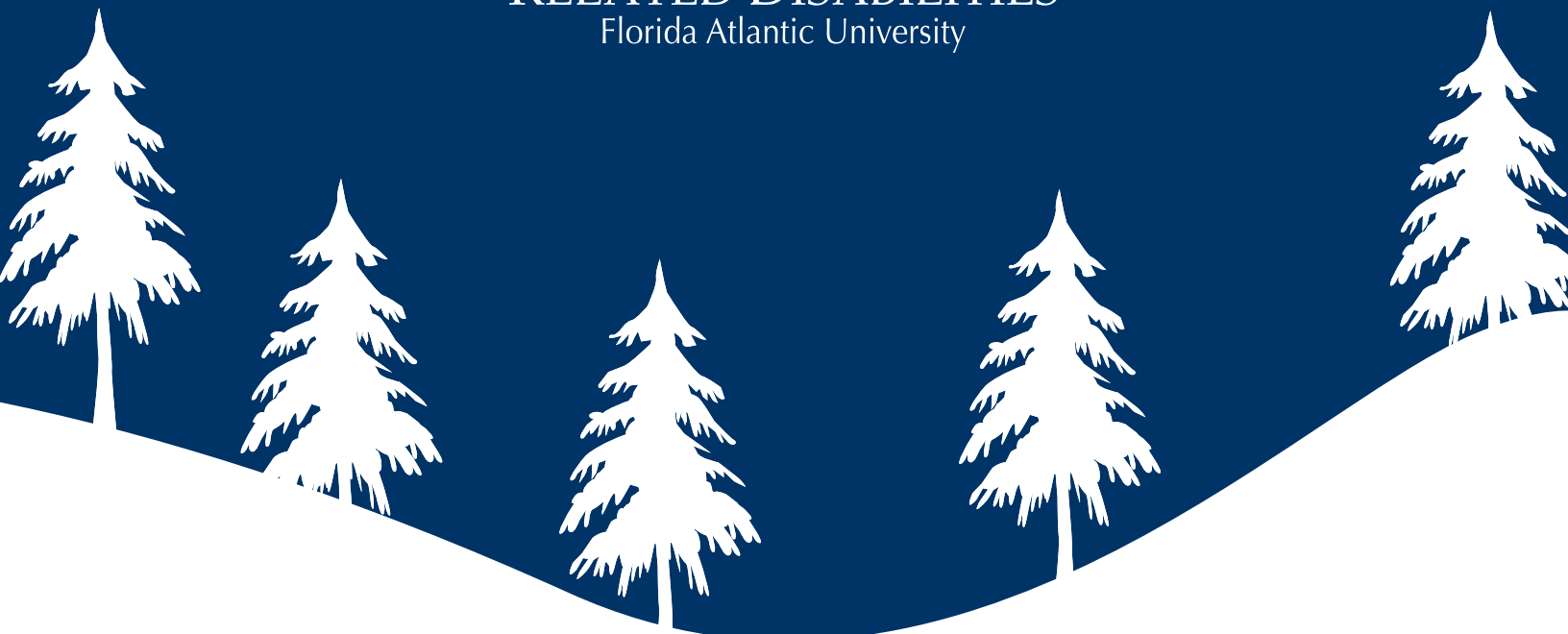




CENTER FOR AUTISM AND
RELATED DISABILITIES
Florida Atlantic University



FAU CARD Spring 2018 Newsletter

Executive Director's Message

A New Year

Jack Scott, FAU CARD executive director, visited the Vinceremos Therapeutic Riding Center in Loxahatchee recently. This program provides an array of services for people with disabilities. Lessons for children with autism are subsidized so they can be affordable to most families. Here Jack is with Ruth Menor an instructor and a rider from Okeehelie Middle School. Diesel, the horse, is specially selected and trained to be gentle with people with special needs.

Jack Scott
Executive Director



FLORIDA AUTISM LICENSE PLATE



Support Autism Programs

Florida motorists have the opportunity to help generate funds for autism related services throughout Florida by purchasing a plate!

Purchase a Plate!

FAU CARD CALENDAR OF EVENTS

UNLESS OTHERWISE INDICATED, ALL TRAININGS WILL ALSO BE AVAILABLE ONLINE

JANUARY

- JAN Replay - When Children With ASD Are More Than Just Picky Eaters
- JAN Promoting the Self-Determination Of Students With Autism Across The Life Course
- JAN 8 Little Owls Early Intervention Initiative
- JAN 9 Coffee Talk
- JAN 11 Boca Raton iRISE2 Mentor Orientation
- JAN 11 State ASD Administrators Meeting
- JAN 11-14 CARD Annual Statewide Conference
- JAN 12 Girls Who Code Club Information Session
- JAN 17 FAU CARD College Student Meet Up
- JAN 18 Making The Move to Middle School
- JAN 19 iRISE2 STEM Mentoring Program Information Session
- JAN 21 Wellington Law Enforcement Day For Autism
- JAN 22 Boca Raton Adult Social Groups
- JAN 25 Treasure Coast Adult Social Groups
- JAN 25 Strategies and Tips For Professionals Who Work With Adults With ASD
- JAN 27 Autism Safety Fest
- JAN 30 NAMI TALK

FEBRUARY

- FEB 6 Destination Preschool
- FEB 7 Reading for Meaning
- FEB 9 Sleep Health - A Talk for Parents Of Children With ASD
- FEB 9 Pediatric Sleep - A Talk for Helping Professionals
- FEB 13 Coffee Talk
- FEB 15 Toilet Training Tips For Parents
- FEB 15 Tips for Safe Interaction With Law Enforcement for Teens and Adults With ASD
- FEB 19 Boca Raton Adult Social Groups
- FEB 19 Building Bridges - ASD And Your Grandchild
- FEB 20 Save the date: Community Autism Speakers Series, Dating Safety
- FEB 22 Middle School Parents - Let's Talk About Transitioning from High School

- FEB 22 Treasure Coast Adult Social Groups
- FEB 22 Boca Raton iRISE2 Mentor Orientation
- FEB 27 Guardian Advocacy Info Session

MARCH

- MAR 3 Wings of Hope 2018
- MAR 13 Coffee Talk
- MAR 15 Tips For Online Safety For Teens & Adults With ASD
- MAR 15 Boca Raton iRISE2 Mentor Orientation
- MAR 19 Boca Raton Adult Social Groups
- MAR 22 Treasure Coast Adult Social Groups
- MAR 23 FAU CARD Health Care Institute On Autism
- MAR 27 Planning For An Autism Emergency
- MAR 28 Disability Career Fair

APRIL

- APR 6 Save the date: Special Ethical Issues Faced by BCBAs when Providing Services to Persons with ASD
- APR 9 Camp Ready - Strategies For A Successful Transition Into Summer Camp
- APR 10 Coffee Talk
- APR 12 Jupiter iRISE2 Mentor Orientation
- APR 16 Boca Raton iRISE2 Mentor Orientation
- APR 16 Boca Raton Adult Social Groups
- APR 17 Participating In The Community
- APR 18 Autism Speaker Series: Ali Cunningham
- APR 21 Family Connections Conference - Parents Supporting Parents
- APR 26 Treasure Coast Adult Social Groups

MAY

- MAY 7 Planning For A Successful Summer Vacation with Children Who Have ASD
- MAY 7 Coffee Talk
- MAY 8 Numbers, Equations & Math, Oh My!
- MAY 11 Mental Health Conference - Cognitive Behavioral Therapy & Individuals With ASD
- MAY 11 Boca Raton Adult Social Groups

Visit: <http://coe.fau.edu/centersandprograms/card/trainingcalendar.php>

FAU CARD does not endorse specific programs or points of view presented in this newsletter.

Director's Update

Dear CARD Families,

We hope you had a smooth transition to the new school year. It is hard to believe that once again, we are approaching the holidays. It has been a very busy and productive fall at FAU CARD!

FAU CARD has had several, very successful initiatives and training events this fall.

One such initiative is the Little Owls Early Intervention Initiative for parents and caretakers of young children recently identified with autism or in the diagnostic assessment process. The Little Owls program is a three-day parent training program offered through a generous gift from the Taft Foundation. The program provides parents with strategies for dealing with challenging behaviors, tips for enhancing social communication, advocacy, resources, benefits and more. Please contact Wanda Baldwin at baldwinw@fau.edu for additional information and the upcoming Little Owls program near you.

FAU CARD has also sponsored three exciting PEPSA events this fall with a new upcoming event on February 9th. Dr. Paula Kluth presented on October 26th Joyful Learning Active and Collaborative Structures to Differentiate Instruction. Participants learned principles of differentiation, by exploring a number of collaborative, active and brain-compatible learning techniques aimed at engaging students and making learning fun. November 17th, Board Certified Behavior Analyst and psychologist Dr. Roseanne Lesack presented When Children with ASD are More Than Picky Eaters: Prevalence, Assessment and Treatment Considerations on the use of applied behavioral analysis (ABA) strategies to address mealtime problem behaviors. Our final PEPSA event for the fall was conducted on December 7th, entitled Promoting the Self-Determination of Students with Autism Across the Life Span. Dr. Michael Wehmeyer professor from the University of Kansas, noted authority and author, provided an overview of the history of self-determination, its application in the education of students with ASD, the discrete skills involved for practicing self-determination and strategies for teaching this important process.

Our next PEPSA event will be on February 9, 2017 with Dr. Chris McGinnis, psychologist, sleep researcher and Board Certified Behavior Analyst. Dr. McGinnis serves as Clinical Director of Boys Town South Florida's Behavioral Health Clinic headquartered in West Palm Beach. Dr. McGinnis will be speaking in the morning to parents, and to professionals in the afternoon. The morning session entitled "SLEEP HEALTH: A TALK FOR PARENTS OF CHILDREN WITH ASD" will focus on reasons for poor sleep, how it affects functioning, behavioral diagnosis, and ways to improve it. The afternoon session "PEDIATRIC SLEEP HEALTH: A TALK FOR HELPING PROFESSIONALS" will provide a science-based overview of pediatric sleep disorders and offer information on prevalence, sleep requirements by age, how sleep problems impact the child and parents biologically and neurologically, and means by which sleep problems may be allayed. Recommendations for further reading will also be offered.

FAU CARD additionally organized a very well attended College Connecting Conference on Saturday, November 4th. 67 participants consisting of students and parents attended to learn steps needed to prepare for college and skills required to be successful. The keynote speaker Dr. Stephen Shore, a professor and adult with autism presented on "Competencies and Skills Needed for College". A panel consisting of a graduate student with ASD, a parent of a college student, and representatives from the FAU Student Accessibility Office, FAU Student Counseling Office, and Vocational Rehabilitation and FAU student club Impact for Autism provided students and parents with important strategies for success.

I am happy to share that the Mangurian Foundation funded again FAU CARD for the Autism Community Speakers Series. The focus for our 2018 Autism Speakers Series will focus on Autism and Romantic Relationships, the strengths and challenges. Two presentations will be coordinated in the spring at the FAU Jupiter campus. Dr. Ali Cunningham will be presenting on Wednesday, April 18th on "It's Not You, It's Me", Navigating the World of Dating and Romantic Relationships. Dr. Kim Spence will be presenting on February 20th on "Dating Safety". Check our website for upcoming information.

FAU CARD has other exciting future events. Mark your calendar for our Health Care Provider Institute on Friday, March 23rd; Family Connections Conference on Saturday, April 21st; Mental Health Conference on Friday, May 11th; and Summer Academy on Monday, July 23rd and Tuesday, July 24th. Please see the FAU CARD training and event calendar on the FAU CARD website (www.autism.fau.edu) for additional offerings.

We hope to see you at the 25th Annual State CARD Conference, January 12th-14th at the Tradewinds Resort, in St Petersburg Beach. Please visit the conference website <http://card-usf.fmhi.usf.edu/CARDconference> for details.

Please mark your calendar for the upcoming FAU CARD Wings of Hope Event on Saturday, March 3rd honoring the Autism Channel at the Club at Boca Pointe in Boca Raton. This event is an important fundraising event for FAU CARD. We hope we can count on your support.

Thank you for all your support of FAU CARD. We appreciate all you do!
I hope to see you at some of our events.

Maryellen Quinn-Lunny, Ed.S.
Director

Cathy Allore
Clinical Support Specialist
callore@fau.edu
Phone: 772-873-3367

Noelle Balsamo
Assistant Director
nbalsamo@fau.edu
Phone: 561-212-4930

Wanda Baldwin
Clinical Support Specialist
for Early Intervention
baldwinw@fau.edu
Phone: 561-245-1792

Kelley Bastien
Clinical Support Specialist
bastienk@fau.edu
Phone: 561-235-8412

Alison Bourdeau
Clinical Support Specialist
aboutdeau@fau.edu
Phone: 561-990-9518

Mercedes Pagano
Coordinator Information
& Publication Services
paganom@fau.edu
Phone: 561-212-8058

Alexandria May
iRISE2 Assistant
Program Coordinator
amay8@fau.edu
Phone: 561-212-8094

Darius Murray
iRISE2 Mentoring
Program Coordinator
dmurray23@fau.edu
Phone: 561-213-6936

Don Lawless-Coker
Grants Coordinator
dcoker@fau.edu
Phone: 561-297-4016

Susanna Launder
Clinical Support Specialist
slaunder@fau.edu
Phone: 561-212-2859

Jack Scott
Executive Director
jscott@fau.edu
Phone: 561-251-4104

Rosemary Portera
Clinical Support Specialist
r.portera.vaughn@fau.edu
Phone: 772-873-3422

Jennifer Percival
Clinical Support Specialist
for Transition
jpollack@fau.edu
Phone: 561-212-4203

Kerry Wittel
Clinical Support Specialist
kwittel@fau.edu
Phone: 561-235-9342

Jacqueline Wood
Clinical Support Specialist
JacquelineWood@fau.edu
Phone: 561-221-7298

THE
Meet



FLORIDA ATLANTIC UNIVERSITY
CARD

FAU CARD

Little
Owls

Early Intervention Initiative

FAU CARD's Little Owls Early Intervention Initiative is a **free** 3-day training for parents, grandparents, and family members of infants, toddlers and preschoolers (*18 months - 5 years old*) with autism spectrum disorder(ASD) or a related disorder.

Discover how to:

- Promote learning
- Improve communication
- Increase social engagement
- Keep your child safe

Learn about:

- Therapies
- Advocacy
- Benefits your child may be eligible for
- Parent support and self-care

Date: January 8, 9, 10, 2018

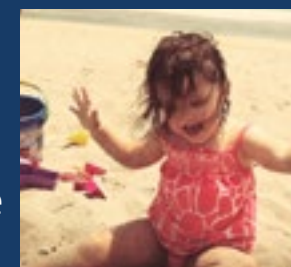
Each Day will have new content

Time: 9:30 a.m. - 1:15 p.m.

Location: FAU-CARD at IRSC

500 NW California Blvd, Schreiber Conference Center, Suite D-115, Port St Lucie, FL 34986

<https://littleowlspsljan.eventbrite.com>



"Little Owls will offer you practical and effective parenting strategies to equip you to deal with daily activities."



Want to Learn More?

To learn more about the FAU CARD's Little Owls Early Intervention Initiative contact:

Wanda Baldwin, LCSW
Early Intervention Specialist
561.245.1792
baldwinw@fau.edu





Adult Social Groups

All individuals with ASD ages 18+ are welcome. Groups will meet up to participate in different activities within the community in order to meet new people, find common interests, and develop friendships. Locations will be determined prior to outing date. Any costs associated with participation in the outing are the responsibility of the participant, as well as transportation to and from the outing.

Jupiter

Dates and Times to be announced. For questions, contact Alison Bourdeau (561) 990-9518 or abourdeau@fau.edu

Boca Raton 7 - 8:30 p.m.

Monday, January 22
Monday, February 19
Monday, March 19
Monday, April 16
Monday, May 21

For questions, contact Jacqueline Wood (561) 221-7298 or jacquelinewood@fau.edu

Treasure Coast 7 - 8:30 p.m.

Thursday, Jan 25
Thursday, Feb 22
Thursday, Mar 22
Thursday, Apr 26

For questions, contact Cathy Allore (772) 873-3367 or callore@fau.edu



Coffee Talk

*2nd Tuesday of each month
6 - 7 p.m.*

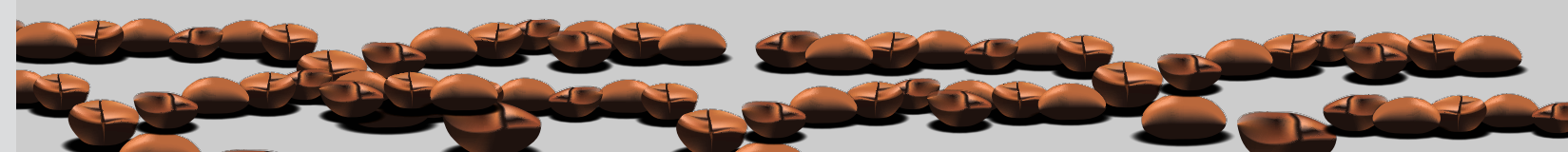
Monthly support group for parents or family members of children with Autism or related disabilities. Each month FAU CARD will present a brief 30-minute informational session on a relevant topic, followed by 30 minutes of social time to network with other parents, FAU CARD staff or family members. Confidentiality will be maintained within the group.

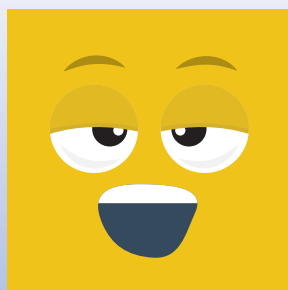
2018

- 1/9/18
- 2/13/18
- 3/13/18
- 4/10/18
- 5/8/18

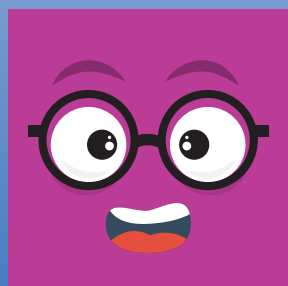
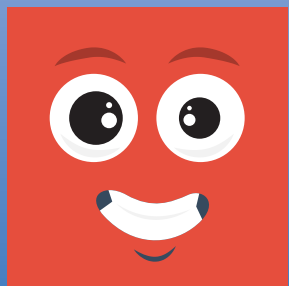
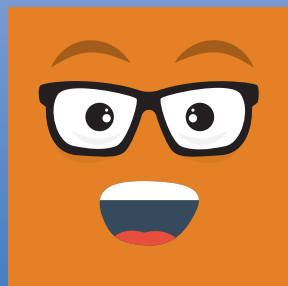
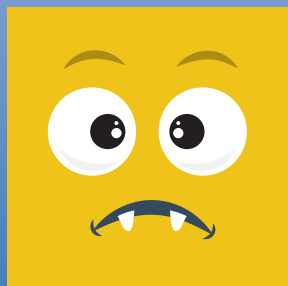
**Hagen Ranch Road Palm Beach County Public Library
Conference Room
14350 Hagen Ranch Road
Delray Beach, FL 33446**

**For more information please contact
Kerry Wittel at kwittel@fau.edu or 561-235-9342**





It is difficult for an autistic individual to interpret overt emotional expressions by other people, for instance facial expressions and body language. Likewise they have difficulty communicating what they want to convey.



ANNOUNCING OUR 2017 IRISE2 GWC CLUB

The Center for Autism and Related Disabilities at Florida Atlantic University FAU CARD, is proud to announce the return of our iRISE2 Mentoring Girls Who Code Club. Under the guidance of an experienced female computer engineer, CARD staff and trained mentors, this innovative program is helping to bridge the gender gap in technology while providing the participants the opportunity to explore interests that could lead to competitive employment with other girls. This unique partnership with the national organization Girls Who Code Club, offers an inclusive computer science club for teen girls with a diagnosis of autism between the ages of 14 – 19 years old, with a strong interest in art and computers. A core focus of the club is introducing young girls to concepts of sisterhood and computer science. With the use of best practice tools, this club helps to build social skills, increase independence while influencing self-confidence and teamwork during a crucial period of social and emotional growth. This spring, coding is influencing friendships and interest again at FAU CARD.

The program is currently offered free to individuals registered with the Center for Autism and Related Disabilities. We will be hosting a Girls Who Code Information Session on Friday January 12th at 5:30pm on our FAU Boca Campus. Please feel free to register using the following link: <https://2017gwcinfosession.eventbrite.com> or contact Darius Murray to learn more at: 561-213-6936 or dmurra23@fau.edu.

FLORIDA ATLANTIC UNIVERSITY™ iRISE² MENTORING PROGRAM



Are you interested in being mentored?
Are you registered with FAU CARD?
Are you a girl between the ages of 14-19?
Are you interested in technology or coding?

GET YOUR START WITH A GIRLS WHO CODE CLUB!

Information Session: Friday, Jan 12th from 5:30 - 6:30 p.m.

Location: FAU Boca Raton Campus

Please Contact: Darius Murray at 561-213-6936 or dmurra23@fau.edu

Girls Who Code is a **FREE** program for 14-19 year old girls to explore coding in a fun and friendly way!

www.autism.fau.edu



25th Annual CARD Conference on Autism Spectrum Disorder

We've come a long way in 25 years of supporting those with autism and related disabilities. Join us, January 12–14 2018 as we explore what the future holds.

The CARD Conference provides access to evidence based information that promotes best practices in education, early intervention and quality community based life-styles for individuals with autism, deaf-blindness, and related disabilities.

Keynotes Sneak Peek

- Chantal Sicile-Kira
- Paul Wehman
- Jennifer O'Toole
- Susan Faja
- Jed Baker

<http://card-usf.fmhi.usf.edu/cardconference/index.html>

Ladies Adult Social Group



- Ladies with ASD 18+
- Social outing based on interests
- Focuses on making connections with others and exploring interest based activities in the area
- Meets bi-monthly in Jupiter, contact Alison Bordeau for further information



autism.fau.edu



(561)990-9518



abourdeau@fau.edu

Orientations:

Social skills are very significant tools to success in the workplace and our community. Individuals with autism spectrum disorder many times struggle with engaging and maintaining conversation with peers and adults. The iRISE² Mentoring Program provides high functioning individuals diagnosed with autism the opportunity to engage in a supportive one-to-one mentoring relationship. As a dedicated, professionally trained mentor, you will be able to provide guidance, support and friendship through social engagement and exploring employment interests with your protégé. This orientation will provide mentors with a complete overview of the iRISE² Mentoring Program volunteer opportunities.

Mentor Requirements:

- ★ *Must be at least 21 years of age or older*
- ★ *Open to maintaining a 1-year mentoring relationship*
- ★ *Minimum of 4-6 hours a month based on your availability*
- ★ *Valid driver's license and auto insurance*
- ★ *Successfully complete volunteer background screening*

Boca Raton iRISE² Mentor Orientation

Thursday, January 11 (5:30-6:30 p.m.)
Thursday, February 22 (5:30-6:30 p.m.)
Thursday, March 15 (5:30-6:30 p.m.)
Monday, April 16 (5:30-6:30 p.m.)

Boca Raton Campus, College of Education - 411

To attend this training on [campus](#) or [online](#), register at:

<https://irise2mentororientationboca.eventbrite.com>

Jupiter iRISE² Mentor Orientation

Thursday, April 12 (5:30-6:30 p.m.)

To attend this training on [campus](#) or [online](#), register at:
<https://irisementorjupiter.eventbrite.com>

"Tell me and I forget, teach me and I may remember, involve me and I learn" - Benjamin Franklin



autism.fau.edu



(561)213-6936



dmurra23@fau.edu



Jupiter, FL

REPLAY - WHEN CHILDREN WITH ASD ARE MORE THAN JUST PICKY EATERS: PREVALENCE, ASSESSMENT, AND TREATMENT CONSIDERATIONS

Presented by: Roseanne Lesack, Ph.D., BCBA-D Hosted by: FAU CARD

Dec 15, 2017 – Jan 31, 2018

REPLAY

Registration Information:
REGISTRATION IS MANDATORY

To view this presentation online,
register online at:
<https://replaylesack.eventbrite.com>

For more information, contact:
CARD@fau.edu or 561-297-2023

About the Presenter

Roseanne Lesack, Ph.D., BCBA-D, ABPP, is a licensed psychologist in the state of Florida and a Board Certified Behavior Analyst. Prior to moving to Florida two years ago, Dr. Lesack was an assistant professor at Emory University School of Medicine, providing clinical services at the Marcus Autism Center's Pediatric Feeding Disorders Clinic, one of the largest in the country. She is currently the director of the only multidisciplinary feeding disorders clinic serving South Florida. Based at the Mailman Segal Center for Human Development at Nova Southeastern University, the Feeding Disorders Clinic supports families and children struggling with mealtime problem behaviors.

Learning Objectives

This workshop will provide the foundational information describing the problems children on the autism spectrum encounter with food selectivity and food refusal. Clinicians in the field will learn the components of a standard feeding assessment and how to use applied behavior analysis (ABA) strategies to address mealtime problem behaviors. Most importantly, considerations for safety will be reviewed so that clinicians are aware of procedures ensuring that children are medically cleared to begin services and know the boundaries of their scope of practice.

Training Objectives

Participants will:

- Review prevalence rates for children with ASD and food refusal and/or significant food selectivity.
- Discuss classification of food refusal and food selectivity for children with ASD.
- Describe the underlying mechanisms leading to disordered feeding patterns in children with ASD.
- Delineate scope of practice for BCBA's targeting feeding goals.
- Review assessment methodology to identify problematic feeding behaviors in children with ASD.
- Review research to support the use of applied behavior analysis (ABA) in the treatment of feeding concerns in children with ASD.
- Discuss the use of ABA intervention strategies to decrease problem mealtime patterns and increase adaptive feeding behaviors.



Regional Trainings are hosted by the Center for Autism and Related Disabilities, through the Partnership for Effective Programs for Students with Autism (PEPSA), a program funded by the State of Florida, Department of Education, K-12 Public Schools, Bureau of Exceptional Education and Student Services, through federal assistance under the Individuals with Disabilities Education Act (IDEA), Part B. www.DOEpartnership.org



Jupiter, FL

REPLAY - PROMOTING THE SELF-DETERMINATION OF STUDENTS WITH AUTISM ACROSS THE LIFE COURSE

Presented by: Michael Wehmeyer, Ph.D. Hosted by: FAU CARD

Dec 15, 2017 – Jan 31, 2018

REPLAY

About the Presenter

Michael L. Wehmeyer, Ph.D., is the Ross and Marianna Beach distinguished professor in special education, associate chairperson of the Department of Special Education, director and senior scientist at the Beach Center on Disability, and co-director of the Kansas University Center on Developmental Disabilities within the Schiefelbusch Institute for Life Span Studies, all at the University of Kansas. For more info [click here](#).

Training Description

Research has established that promoting the self-determination of youth with disabilities, including youth with autism spectrum disorder, has benefits for both school and adult outcomes. This day-long session will introduce and provide an overview of self-determination and its application in the education of students with ASD, examine factors contributing to the need to promote self-determination, and overview the research for its importance. The development of self-determination across the life course will be discussed and evidence-based practices to assess and promote self-determination will be overviewed, including efforts to promote students with ASD in educational and transition planning.

Training Objectives.

Participants will:

- Understand the self-determination construct and its relevance to the education of children and youth with disabilities.
- Examine the research base supporting instruction in self-determination and student involvement.
- Become aware of critical skills leading to self-determination and the development of such skills.
- Be introduced to interventions to promote self-determination and student-directed learning.
- Be introduced to interventions to promote student involvement in education and transition planning.

Registration Information:

REGISTRATION IS MANDATORY

To view this presentation online, register online at:

<https://replaywehmeyer.eventbrite.com>

For more information, contact:

CARD@fau.edu or 561-297-2023

FAU CARD College Student Meet Up

Welcome to the Spring Semester of the 2017-2018 school year! New and returning FAU students, who are registered FAU CARD constituents, are invited to come meet your classmates at the FAU CARD College Student Meet Up!

This meet up is for both undergraduate and graduate students. Bring your lunch and head over to the FAU College of Education 4th floor, in room 411! We look forward to seeing you there!

WED
JAN 17
12 - 1 p.m.

FAU Boca Raton Campus, College of Education, Room 411

To attend this training *on campus*, register at:

https://faucard_collegestudentmeetup_spring2018.eventbrite.com/



Making the Move to Middle School

It's never too early to start thinking about school transition! This presentation will provide parents and families with supports, tips, and strategies to assist children with autism and related disabilities in making a successful transition from elementary to middle school. Offered onsite and online. Link will be sent to online participants.

For more information please contact Jacqueline Wood, jacquelinewood@fau.edu



Regional Trainings are hosted by the Center for Autism and Related Disabilities, through the Partnership for Effective Programs for Students with Autism (PEPSA), a program funded by the State of Florida, Department of Education, K-12 Public Schools, Bureau of Exceptional Education and Student Services, through federal assistance under the Individuals with Disabilities Education Act (IDEA), Part B. www.DOEpartnership.org

THUR
JAN 18
1 - 3 p.m.

FAU Boca Campus, COE room 411

To attend this training *on campus or online*, register at:

<https://movetomiddleschool.eventbrite.com>

They Say 1 in 68 have ASD



I Say 1 of a Kind

NEW IRISE2 STEM MENTORING PROGRAM

We would also like to announce a NEW addition to our iRISE2 STEAM Mentoring Clubs, our iRISE2 Robotics Tinker-Tank Club. This is a new program provided in partnership with University of Florida's 4-H Youth Development Program. This club is free to youth registered with FAU CARD and iRISE2 Mentoring, who have interest in learning about robotics and being introduced to rudimentary computer coding while working with peers who share the same interest and goals, between the ages of 11 – 18 years old. This club will be hosted on our FAU Boca Campus with the potential of an additional club in the Northern Palm Beach area (TBA). Individuals interested in making new friends who also enjoy robotics and computer science are encouraged to join us at our information session on Friday January 19th at 5:30pm on our FAU Boca Campus, please use this link to RSVP today! <https://irise2stemclub.eventbrite.com>

New iRISE2 STEM Mentoring Program



Are you registered with FAU CARD?
Do you have an interest in learning about robotics?
Do you want to learn rudimentary computer coding?
Are you between the ages of 11 – 18 years old?

**Get Started with
iRISE2 Robotics Tinker-Tank Club**

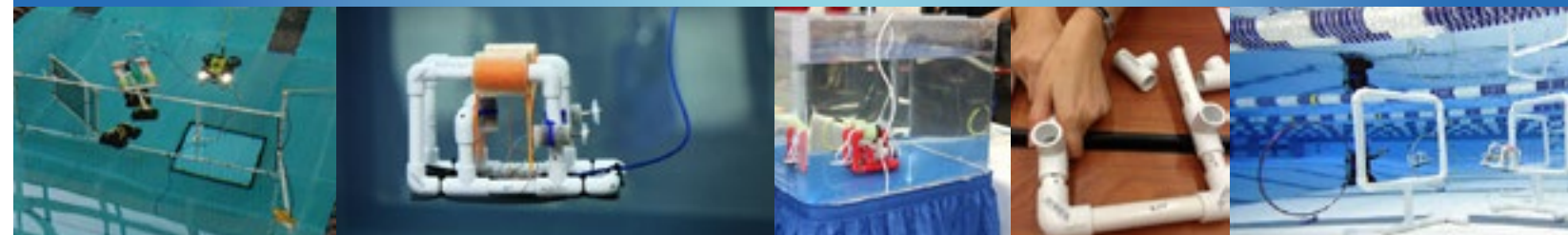
Individuals interested in making new friends who also enjoy robotics and computer science are encouraged to join us at our information session.

Information Session: Friday, Jan 19th from 5:30 - 6:30 p.m.

Location: FAU Boca Raton Campus

<https://irise2stemclub.eventbrite.com>

Please Contact: Darius Murray at 561-213-6936 or dmurra23@fau.edu



FLORIDA ATLANTIC UNIVERSITY
iRISE² MENTORING PROGRAM



**FAU
CARD**



A DAY FOR AUTISM

BUILDING BRIDGES WITH LAW ENFORCEMENT

1/21/18 from 11 a.m. to 1 p.m.

Village of Wellington's Community Center
12150 Forest Hill Blvd, Wellington, FL 33414

Join the Village of Wellington, Palm Beach County Sheriff's Office, and FAU CARD for an afternoon of music, fun, and games and community. PBSO's Mounted and K-9 Units will be in attendance to "meet and greet."

FAU CARD staff and local vendors will also be in attendance to provide information and resources. Please RSVP at the link below as lunch will be provided.

Register: <https://lawenforcementdayforasd.eventbrite.com>



For questions, please contact abourdeau@fau.edu or at 561-990-9518

Strategies and Tips for Professionals who work with Adults with ASD in a Client-Services Setting



This training is designed to assist professionals who work with adults with ASD to improve delivery of information to clients, increase understanding of communication needs for individuals with ASD, to learn strategies on how to improve client follow up and follow through, and to increase knowledge of techniques to improve effectiveness in client meetings. The training is suggested for state agency, services, and program casemanagers, counselors, coordinators, and for educational support specialists.

For more information please contact Jennifer Percival at jpollack@fau.edu

**THUR
JAN 25**
1-3 p.m.

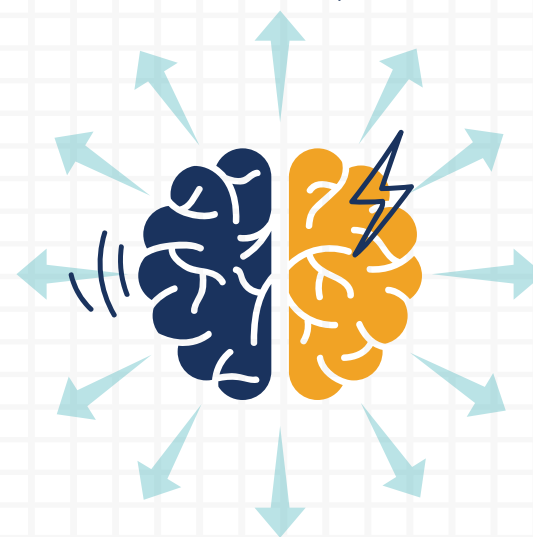
FAU Jupiter Campus IRSC Campus CARD Office

To attend this training *online*, register at:

https://faucard_strategies_and_tips_for_professionals.eventbrite.com

NAMITalk

Comorbidity of Autism Spectrum Disorder/Mental Illness



General Meeting talk about the co-morbidity of ASD and other mental health conditions in the teen and adult populations.

**TUES
JAN 30**
6 - 8 p.m.

5205 Greenwood Avenue West Palm Beach, FL 33407

To attend this training *on campus or online*, register at:

<https://nami-general-meeting-asd.eventbrite.com>



FAU CARD

Autism Safety Fest

at the Okeechobee Family Health & Safety Expo

SAT JAN 27

9 a.m. - 2 p.m.

**Okeechobee Agri Civic Center
Training Room**

4601 FL-710

Okeechobee, FL 34974

Autism Learning Events

10 a.m. Preventing an Autism Emergency

Families will learn the how to prevent the most-likely emergencies that can happen to individuals on the autism spectrum and prepare for how to deal with emergencies when they do come up. Wandering/eloping, identification methods, emergency documentation and more will be covered in the training.

11:15 a.m. Safety Tools for Young Children (6 and under) with ASD.

The presentation will be an overview of how to use the items in FAU CARD's Safety Box. Participants will receive a Safety Box (\$40 value) to take home.

12 p.m. Showing of the 'Be Safe' movie.

BE SAFE The Movie is an instructional DVD that teaches teens and adults how to interact safely with the police. Seven realistic scenarios with real officers show what to do and say in a variety of everyday situations ranging from an innocent mistake to an arrest. View our informational video at <https://youtu.be/5pxhZcJSg8o>

Save the date!

St. Lucie County



Early Childhood 2018

St. Lucie Speaks....and Listens!

St. Lucie County Early Childhood Conference

Saturday February 3, 2018

8:30-2:30

*Registration Begins January 8th (details to follow)

Location: Fort Pierce Central High School

4101 S. 25th St.

Fort Pierce, FL 34981

The Language & Communication Domain of the FL Early Learning Standards

*Listening & Understanding

*Speaking

*Vocabulary

Keynote Speaker: Jennifer Faber, FL Children's Council

For additional information, contact:

Mary Huffstetter, Early Childhood Coordinator

mary.huffstetter@stlucieschools.org

772-429-5548




Early
Childhood
ST. LUCIE PUBLIC SCHOOLS



FAU Center for Autism and related Disabilities (CARD) is a community-based program providing assistance and supports to people with autism spectrum disorder and related disabilities, their families, the professionals serving them, and the community. CARD serves individuals of any age, diagnosed with an autism spectrum disorder (Autism, Asperger Syndrome, PDD-NOS, and Social Communication Disorder), Rett Syndrome, and dual sensory impairment. All FAU CARD services and support are offered at no charge to the community and registered families. The FAU CARD Clinical Support Specialist for Indian River & Okeechobee County is: Rosie Portera, M.S., CCC-SLP, Speech Language Pathologist r.portera.vaughn@fau.edu or 772-873-3422

Destination Preschool

What Parents Need to Know About Transitioning to School-Age Support Services



This training is best suited for Palm Beach County parents of children with special needs who are under the age of 5. Participants will be given valuable information regarding the Transition Process for the Exceptional Student Education (ESE) Pre-Kindergarten Program within the School District of Palm Beach County. Participants will learn about ESE Parent Support Services, Procedural Safeguards, Child Find Referrals, ESE Evaluations, the Individual Education Plan (IEP), Eligibility Determination and Placement at an ESE Pre-K Program or an ASD Charter School.

*For more information please contact Kelley Bastien at bastienk@fau.edu
Link and the site location will be provided the day before the training via email for all that RSVP.*

**TUES
FEB 6**
9 - 10:30 a.m.


FAU Jupiter Campus

To attend this training *on campus or online*, register at:

<https://planningforasuccessfulsummervacation.eventbrite.com>

Reading for Meaning

Supporting Comprehension for Students with ASD



This training will identify reading challenges that are often unique to students with autism and address instructional strategies that can support comprehension and meaning-making. We will share helpful resources and provide supports for promoting reading at school and at home. Offered onsite and online. Link will be sent to online participants.

For more information please contact Jacqueline Wood, jacquelinewood@fau.edu

**WED
FEB 7**
1 - 3 p.m.

FAU Boca Campus, COE room 411

To attend this training *on campus or online*, register at:

<http://readingformeaning2018.eventbrite.com>

SLEEP HEALTH

A TALK FOR PARENTS OF CHILDREN WITH ASD



Training Description

Almost 9 out of every 10 children with neurodevelopmental disorders suffer chronic sleep problems, and yet no answers exist for parents as to what they can do to improve their children's sleep and in turn their overall daily functioning. Dr. McGinnis will discuss reasons for poor sleep, how it affects functioning as well as behavioral diagnosis, and ways to improve it.

About the Presenter

Dr. Chris McGinnis is a licensed psychologist, Board Certified Behavior Analyst, and pediatric sleep researcher and serves as Clinic Director of Boys Town South Florida's Behavioral Health Clinic headquartered in West Palm Beach with colocated services in primary care pediatric offices around the county. He speaks regularly on behavioral pediatric topics, effective parenting, distinguishing science from pseudoscience in pediatric medical and behavioral healthcare, and non-psychopathological alternatives to traditional conceptual systems in behavioral health. He has assisted in the development of the National Autism Center's National Standards Project and has served as a subject matter expert for the Behavior Analyst Certification Board.

**FRI
FEB 9**
9:30 - 11:30 a.m.

**FAU Jupiter, MacArthur Campus, EC101 and 102
5353 Parkside Drive
Jupiter, FL 33458**

<https://sleephealth.eventbrite.com>



Jupiter, FL

PEDIATRIC SLEEP HEALTH: A TALK FOR HELPING PROFESSIONALS

Presented by: Dr. Chris McGinnis Hosted by: FAU CARD

Feb 9, 2018

1 - 4 pm

*3 Social Work, Mental Health, M&F
CEUs will be available
(\$37.50 pre-registration; \$45 onsite)

**FAU Jupiter
MacArthur Campus**
EC101 and 102
5353 Parkside Drive
Jupiter, FL 33458

Registration Information:

REGISTRATION IS MANDATORY

DEADLINE: Feb 8, 2018
Limited to first 150 participants

To view this presentation on-site or online,
register online at:
<https://pediatricsleep.eventbrite.com>

For more information, contact:
CARD@fau.edu or 561-297-2023

Directions:

For directions click [HERE](#)

Credits:

3 Social Work, Mental Health, M&F CEUs
will be available
(\$37.50 pre-registration; \$45 on-site)

*Be sure to contact your ESE District Staff or Staff
Development Contact to determine the process for
receiving in-service.*

About the Presenter

Dr. Chris McGinnis is a licensed psychologist, Board Certified Behavior Analyst, and pediatric sleep researcher and serves as Clinic Director of Boys Town South Florida's Behavioral Health Clinic headquartered in West Palm Beach with collocated services in primary care pediatric offices around the county. He speaks regularly on behavioral pediatric topics, effective parenting, distinguishing science from pseudoscience in pediatric medical and behavioral healthcare, and non-psychopathological alternatives to traditional conceptual systems in behavioral health. He has assisted in the development of the National Autism Center's National Standards Project and has served as a subject matter expert for the Behavior Analyst Certification Board.

Training Description

Sleep problems in the pediatric population, particularly those with neurodevelopmental disorders, are quite common and yet they rarely garner the clinical attention they deserve. This talk is intended to help change that reality, at least in our region. Dr. McGinnis will present a science-based overview of pediatric sleep disorders and offer information on prevalence, sleep requirements by age, how sleep problems impact the child and parents biologically and neurologically, and means by which sleep problems may be allayed. Recommendations for further reading will be offered as well.

Training Objectives.

Participants will:

- List common pediatric sleep problems and disorders
- Explain how these problems and disorders affect daily functioning
- Describe the means by which these problems and disorders are best addressed.

CONGRATULATIONS JENNIFER PERCIVAL

FAU CARD is proud to share that Jennifer Percival is the recipient of the Barbara K. Griffin Workforce Excellence Award. This statewide award was presented to Jennifer on October 24th in Orlando in front of an audience of nearly one thousand workforce professionals. Jennifer was nominated for this honor by Dr. Elsa DeGoias, the Disability Services Manager at CareerSource Palm Beach County. The leadership team at CareerSource, which includes CEO Steve Craig and Senior Director of Business Services Helen Ott, supported the nomination. Nominations were received from around the state and Jennifer was chosen due to being "a champion for partnership and collaboration, a results driven innovator, and a standard bearer for performance with excellence and integrity." Barbara Griffin presented the award to Jennifer and shared this statement from the nomination, "This award goes to Jennifer for her passion for collaboration. She serves as the ideal role model for how all of us can find a way to contribute in a greater way to our community and to our residents."

Congratulations Jennifer!



Regional Trainings are hosted by the Center for Autism and Related Disabilities, through the Partnership for Effective Programs for Students with Autism (PEPSA), a program funded by the State of Florida, Department of Education, K-12 Public Schools, Bureau of Exceptional Education and Student Services, through federal assistance under the Individuals with Disabilities Education Act (IDEA), Part B. www.DOEpartnership.org

Toilet Training Tips for Parents



Training for constituents, family members and community professionals on basic principles and strategies related to effective toilet training.

For more information please contact Kerry Wittel at kwittel@fau.edu

**THURS
FEB 15**
1 - 2:30 p.m.

FAU Boca Campus, COE room 411

To attend this training *on campus or online*, register at:

<https://toilettraining2018.eventbrite.com>

Tips for Safe Interaction with Law Enforcement for Teens and Adults with ASD



This training will provide teens and adults with helpful information regarding the safe interaction with law enforcement. This training will incorporate behavioral strategies and examples of scenarios for behavioral rehearsal. Resources for further discussion will be provided. This training will be offered onsite and online. Link and the site location will be provided the day before the training via email for all that RSVP.

For more information please contact Alison B. Bourdeau at abourdeau@fau.edu

**THURS
FEB 15**
4:30 - 5:30 p.m.

FAU Jupiter Campus

To attend this training *on campus or online*, register at:

<https://lawenforcementtips.eventbrite.com>

Building Bridges

Autism Spectrum Disorder and Your Grandchild



FAU CARD is excited to offer a training geared towards grandparents of individuals with Autism Spectrum Disorder and related disabilities. This training will provide participants with a concise explanation of ASD, causes and early indicators, as well as discussion on dealing with challenging behaviors. Participants will also explore strategies to use in building relationships with their grandchildren as well as supporting their adult child. We look forward to seeing you there!

For more information please contact Susanna Launder at slaunder@fau.edu

**MON
FEB 19**
10 a.m. - 12 p.m.

FAU Jupiter Campus

To attend this training *on campus or online*, register at:

<https://buildingbridges2018.eventbrite.com>

Registration closes at 5 p.m. on Saturday, February 17, 2018

Middle School Parents

Let's Talk About Transitioning from High School



Parents of Middle School students, let's start talking about transition from high school! It may seem early, but it can be helpful to know what programs and services are available for students once they exit high school. We will talk about preparing for independent living, transitioning into post-secondary programs, services for adults, employment and much more!

For more information please contact Jennifer Percival at jpollack@fau.edu

**THUR
FEB 22**
10 - 11:30 a.m.

FAU Jupiter Campus IRSC Campus CARD Office

To attend this training *online*, register at:

https://faucard_transitionfromhighschool.eventbrite.com



Treasure Hunt on the Treasure Coast

2018 Annual School to Work Transition Fair

Presented by: The Treasure Coast Interagency Transition Council

February 24, 2018

8:30 am – 12:30 pm

Kight Center for Emerging Technologies

Indian River State College

Main Campus, V Building

3209 Virginia Avenue

Fort Pierce, FL 34981

FREE TRANSITION FAIR FOR STUDENTS WITH DISABILITIES, THEIR FAMILIES, EDUCATORS, & MORE

8:30 - Doors Open/Vendor Displays Open

9:00 - Welcome & Keynote speaker

9:45 - Information Session Begins

12:00 – Door Prizes and Recognition Ceremony

Information sessions will be available on the following topics:

- Social Security
- Health Care
- Diploma/Graduation Options
- Supporting Choices (Guardianship & Other Options)
- Parent Information
- Transition Planning
- Employment/Vocational Rehabilitation

Interact with educators and representatives from local and state agencies and organizations. Speak directly with agencies that provide services for transition-age students (14-22) in your community.

To register in advance, go to <https://2018tctransitionfair.eventbrite.com>.

Requests for Sign Language Interpreters, accessible seating, or additional accessibility needs must be sent to Elizabeth Costello, ecostell@irsc.edu by January 31, 2018. Check our website, www.tcitc.weebly.com for updates and agenda.

*Please note that District's approval is for content only, it does not constitute or imply approval and/or endorsement of this event by the school district.



Guardian Advocacy Info Session



This session, conducted by a practicing Florida Attorney, will provide information and answer questions related to guardianship options in Florida. This is an 'in person' only info session.

For more information please contact Cathy Allore at callore@fau.edu

**TUES
FEB 27**
6:30 - 8:30 p.m.

FAU FAU-CARD @ IRSC/Pruitt Campus D-115

To attend this training *online*, register at:

<https://guardianshipinfopsl.eventbrite.com>

GRANDMA'S PLACE FAMILY SUPPORT PROGRAM IN PALM BEACH COUNTY

The purpose of our Family Support Program, which includes Respite Care, Parent Mentoring and Parent Training, is to give parents of disabled children a much needed break from the full time job of raising these precious children, while equipping parents with the support and tools they need to be effective caretakers in their child's life.

Respite Care – will be offered to families with disabled children birth to 12 years old. All the Parent or Guardian has to do is call us to schedule a time to come to Grandmas Place with their child(ren) to take a tour and complete the initial screening and intake paperwork with Jackie Alvarez. Once all paperwork has been completed and assessment has been approved for that child the Parent/Guardian can schedule to place their child in our care as needed.

Parent Mentoring - is designed to help families with disabled children to connect with our designated Parent mentors we assign as support systems for families that need help.

Parent Training – will provide opportunities to families to gain knowledge and tools to encourage a positive and healthy communication and relationship with their child(ren).

For more information, contact: Jackie Alvarez (561)753-2226 or Jackie.alvarez@grandmasplacepb.org

Wings of Hope²⁰¹⁸

GIVING INDIVIDUALS AND FAMILIES HOPE
Live & Silent Auction, Cocktails, Formal Dinner, Music & Dancing

SATURDAY

MARCH 3 | 6:30 p.m. to 12 a.m.

the Club at Boca Pointe

7144 Boca Pointe Dr, Boca Raton, FL 33433
Cocktail Attire / Black Tie Optional

HONORING
Ray Smithers & Jerry Trowbridge
The Autism Channel

FAU
CENTER FOR AUTISM AND
RELATED DISABILITIES
Florida Atlantic University

<https://bidpal.net/faucard>

Please register by Feb. 18, 2018

Tips for Online Safety for Teens & Adults with ASD



This training will offer tips for online safety for teens and adults with ASD. It will go into scenarios that might pose a potential risk, and offer participants the opportunity to troubleshoot possible outcomes. Resources will be provided for further discussion. This training will be offered onsite and online. Link and the site location will be provided the day before the training via email for all that RSVP.

For more information please contact Alison B. Bourdeau at abourdeau@fau.edu

THUR
MAR 15
4:30 - 5:30 p.m.

FAU Jupiter Campus

To attend this training *on campus or online*, register at:

<https://onlinesafetyforteensandasdults.eventbrite.com>

Girls with ASD: What do you need to know to improve identification?

The Unbalanced Ratios

ASD is diagnosed more commonly in boys 5:1

2:1 with Intellectual Disability

Girls are diagnosed later and require more severe symptoms

10:1 without Intellectual Disability

Diagnostic Criteria: Unmasking ASD in Females

Social Communication

reciprocity with verbal and non-verbal communication, establishing and maintaining relationships

"Camouflaging"

Females are better able to compensate for social deficits through delayed imitation of appropriate behavior. They copy socially successful peers.



Restricted Interests Repetitive Behaviors

physical movements, routines, rigidity, sensory issues, atypical play or focus

Disguised Differences "special interests" may appear "mainstream" but differ in intensity from typical girls. Females have less repetitive behaviors or may be socially motivated to mask them.



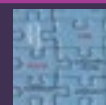
"The 5:00 Effect"

Girls often "hold it together" during school hours and then "explode" with challenging behaviors at home. Parents report having to play the role of convincing schools that their child is struggling and in need of support services in inclusive settings



"Breakdown" in Adolescence

Girls with ASD struggle to imitate complex social behaviors and keep up with social relationships making them more vulnerable to peer rejection, social isolation, bullying, sexual exploitation and escalating mental health conditions in adolescence.



"Diagnostic Overshadowing"

Girls are prone to more internalizing behaviors (self-injury, eating disorders) and commonly have co-occurring conditions with overlapping symptoms (Anxiety/OCD/Depression) that can "overshadow" ASD and delay informed intervention.

FAU CARD Health Care Institute on Autism

Diagnosis, Evaluation and Evidence-Base Interventions

<https://healthcareinstitute.eventbrite.com>



This presentation will cover the elements involved in the medical evaluation of autism spectrum disorders, the different assessments utilized and how different types of clinicians approach ASD diagnosis. Evidence based treatments and current areas of research in novel treatments for ASD will also be discussed.

About the Presenter:

Judith Aronson-Ramos, M.D., is a Board Certified Developmental & Behavioral Pediatrician. Her medical practice is devoted exclusively to the evaluation and treatment of pediatric patients (birth – 18 yrs) with challenges in learning, behavior, development, and social-emotional functioning. Dr. Aronson-Ramos has been in practice for over 30 years and she is acutely aware of the need for individualized and comprehensive care for children and families provided in a supportive and compassionate setting.



MANAGING STIMMING: IMPORTANT CONSIDERATIONS

By: Judith Aronson-Ramos, M.D.

www.draronsonramos.com



Parents often wonder about why their children with ASD sometimes resort to stims or self-stimulatory behaviors, which are also be called stereotypy. These behaviors consist of a wide variety of repetitive body movements or movement of objects. Although stimming is very commonly seen in those with ASD and other developmental disabilities, people without disabilities may also stim. Some individuals will stim when anxious or excited with behaviors such as pacing, hair twirling, nail biting, or tapping their feet or fingers etc.

Self stims can involve a variety of sensory systems – visual, auditory, vestibular, olfactory and gustatory (taste). There are numerous examples of stims but classic stims include – flapping, spinning, sideways glancing, sniffing, licking and tapping. Some self-stims can be dangerous if resulting in self injury such as head banging, picking, biting etc. But what do we know about why people stim? One theory is the self-stimulatory behaviors increase endorphin and dopamine levels (feel good hormones). Release of the hormones can essentially cause nervous system arousal. Most of the research about self-stims have to do with studying their function. Individual's stim in a wide variety of settings ranging from engagement in a pleasurable activity, when upset or agitated, if frustrated or unable to communicate and at times when bored of or actively engaged.

Stimming is a frequent cause of distress for parents as frequently they feel helpless and concerned when their child is engaged in these activities. The most effective approach to stimming is to first see if it is serving a purpose to communicate and if so to help facilitate what the individual is trying to say. Secondly, if it is seemingly occurring during a pleasurable activity try to make the behavior socially appropriate by redirecting or finding a replacement behavior. Additionally, if the stims are seeming to fill a void due to boredom or lack of engagement try to involve the child in a meaningful or purposeful activity to replace the stim. When trying to reduce stims it is important to do so in a sensitive and compassionate manner. Abruptly stifling a stimming behavior will likely result in stress and agitation and make the behavior worse.

Stims can also frighten those who don't know the individual or are not familiar with these behaviors. Sometimes a stim can appear aggressive or threatening and for these reasons it is important to try and shape these behaviors to more socially acceptable activities. Some parents find children need down time in a private setting to indulge in the stimming behavior which as long as there is no injury, harm or danger in the activity may be of value as long as it is within reason.

Medications have been used to reduce these behaviors when they cannot be curbed with therapies such as ABA, ST or OT which can also be effective. The medications used are usually the atypical antipsychotics like Risperdal or Abilify but at times mood stabilizers and ADHD medications can help. Medication would be indicated only if the stims are so pervasive and harmful that the risks of no treatment are greater than potential side effects from medication use. The first line treatment would always be therapy – behavioral,

occupational or speech which can address different areas of need ranging from self-regulation, sensory needs, to communication.

In sum, stims are a common feature of all levels of ASD and can occur in a range of settings. It is always best to understand what purpose the stim is serving to the individual before trying to change the behavior. For more information about stimming see the following links:

<https://spectrumnews.org/opinion/viewpoint/learning-when-to-treat-repetitive-behaviors-in-autism>

<https://www.ncbi.nlm.nih.gov/pmc/articles/PMC3709868/>

<https://www.autismspeaks.org/blog/2016/05/06/mom-perplexed-toddler-running-back-and-forth-shaking-things>

Planning for an Autism Emergency



Participants will learn the critical need for preparing for an autism emergency. Wandering, identification methods, and emergency documentation are covered. Space is limited so REGISTRATION IS REQUIRED.

For more information please contact Cathy Allore at callore@fau.edu

**TUES
MAR 27**
6 - 7:30 p.m.

FAU FAU-CARD @ IRSC/Pruitt Campus D-115
To attend this training *on campus*, register at:
<https://safety-psl.eventbrite.com>

Disability Career Fair

Inclusion Works



Qualified, work ready candidates. Save time and money. Let us help you find the perfect match to fill your vacancies. FREE...no charge to participate. Come set up your free table and meet prescreened, work ready candidates interested in your company.

When your company collaborates with us, you benefit with access to qualified applicants faster and cost free to you.

Why do you want to be at Disability Career Fair...Inclusion Works?

- FREE:** Meet with pre-registered entry level and professional job applicants with disabilities.
- FREE:** Diversify your workforce and tap into new talent pools.
- FREE:** Service and Supports
- FREE:** Funding for On-the -Job training includes funding for salaries.
- FREE:** Receive a Certificate of Participation in the Disability Career Fair confirming your diversity commitment to people with disabilities.

For more information and to save time, pre-register online (Disability Career Fair Jupiter). For further questions, call 561-624-6909.

<https://www.eventbrite.com/e/disability-career-fairinclusion-works-tickets-37652311076?aff=escb&utm-medium=discovery&utm-campaign=social&utm-content=attendeeshare&utm-source=cp&utm-term=eventcard>



**WED
MAR 28**
9:30 - 11:30 a.m.

Palm Beach County Therapeutic Recreation Center,
Gymnasium
2828 Lake Worth Rd. Lake Worth, FL

Camp Ready

Strategies for a successful transition into summer camp

Making the transition from the classroom to summer camp can be challenging for many families. This training will provide families with no nonsense strategies to use to make the transition successful for everyone involved. Special focus will be given to selecting an appropriate camp setting, establishing strong working relationships with camp staff and supporting your child as they take this step into the unknown. This training target audience is parents and caregivers of summer camp aged individuals. We look forward to seeing you there!

For more information please contact Susanna Launder at slaunder@fau.edu



**MON
APR 9**
10 a.m. - 12 p.m.

FAU Boca Campus, COE room 411

To attend this training *on campus or online*, register at:

<https://campready.eventbrite.com>

Registration closes at 5 p.m. on Saturday, April 7, 2018

Participating in the Community

Participants will learn how to write a blueprint for an individual to participate most successfully in community activities. Space is limited so **REGISTRATION IS REQUIRED**



For more information please contact Cathy Allore at callore@fau.edu

**TUES
APR 17**
6 - 7:30 p.m.

FAU Jupiter Campus

To attend this training *on campus* register at:

<https://community-participation-psl.eventbrite.com>

Autism Speaker Series

The FAU CARD Autism Lecture Series is made possible by a grant from The Harry T. Mangurian, Jr. Foundation and we gratefully acknowledge their contribution to educating the public about autism.

**April 18
6 - 8 p.m.**

**FAU Jupiter
Campus, ADM
Auditorium**

**Ali
Cunningham**



"It's Not You, It's Me"

Navigating the World of Dating & Romantic Relationships

Are you or a loved one struggling with success in getting a date or maintaining a healthy and happy romantic relationship? This presentation will explore the most common challenges that adults with autism spectrum disorder (ASD) face when initiating and engaging in dating and romantic relationships to enhance the audience's understanding of this topic. From there, the presentation will review effective methods for addressing these challenges in an effort to improve one's skills in navigating romantic relationships. This review of the methods will include demonstrations of techniques you can teach to others or apply in your own life to enhance relationship skills.

Register: <https://speakercunningham.eventbrite.com>



The FAU Center for Autism and Related Disabilities (CARD) provides expert consulting, training and support, at no charge, for people with autism and related disabilities, their families and the professionals serving them. CARD's goal is to optimize the potential of the individuals we serve by helping them become valued members of their communities, enabling them to learn, work, communicate and socialize. Visit us at: www.autism.fau.edu If an accommodation(s) for a disability is required, please call 561-297-2055 or e-mail us at CARD@fau.edu, a minimum of 5 working days in advance of the date of the event.

Thank you to our partner: The Master Teacher Program and the Department of English of the Dorothy F. Schmidt College of Arts and Letters

Family Connections Conference

Parents Supporting Parents

A.M. PRESENTATION

Please join us for a presentation sharing strategies for the successful participation of families impacted by Autism. Get better acquainted with community support to form your caring community.

Presenter: Dr. Robert Naseef

As the father of an adult son with autism, Dr. Naseef integrates his personal experiences into his professional expertise on autism and special needs. He writes and speaks as an autism and special needs expert from an academically informed perspective, as well as his first-hand knowledge. Dr. Naseef has used his resources to counsel parents of children with special needs and to host a variety of group therapy sessions for fathers to express themselves and receive support. For more info visit: <http://DrRobertNaseef.com>

P.M. PRESENTATION

Breakout groups for the dads and moms.



**SAT
APR 21**
9 a.m. - 3 p.m.

FAU Jupiter
LifeLong Learning Center
5353 Parkside Drive
Jupiter, FL 33458

<https://familyconnections2018.eventbrite.com>

Planning for a Successful Summer Vacation With Children Who Have ASD



This training will review the skills, adaptive strategies and advanced planning necessary to help parents and children with ASD to have successful vacations and family outings this Summer. The presentation will be best suited for parents and caregivers who have children under age 12. Link and the site location will be provided the day before the training via email for all that RSVP.

For more information please contact Kelley Bastien at bastienk@fau.edu

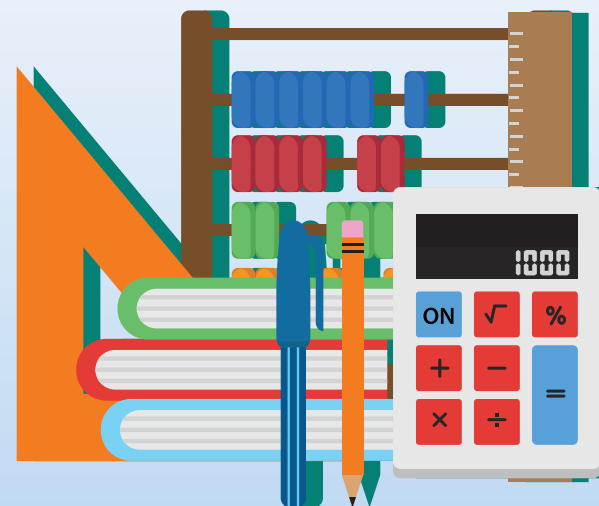
**MON
MAY 7**
9:30 - 11 a.m.

FAU Jupiter Campus

To attend this training *on campus or online*, register at:

<https://planningforasuccessfulsummervacation.eventbrite.com>

Numbers, Equations and Math, Oh My!



Effective strategies to teach functional math concepts and skills to individuals with Autism Spectrum Disorders and related disabilities across learning contexts particularly in the general education environment.

For more information please contact Kerry Wittel at kwittel@fau.edu

**FRI
MAY 11**
1 - 2:30 p.m.

FAU Boca Campus, COE room 411

To attend this training *on campus or online*, register at:

<https://math2018.eventbrite.com>



FAU CARD Jupiter, Florida MENTAL HEALTH CONFERENCE

COGNITIVE BEHAVIORAL THERAPY AND INDIVIDUALS WITH ASD

Hosted by: FAU CARD

Presented by: Joshua M. Nadeau, PhD

May 11, 2017

9 a.m. – 4 p.m.

**6 Social Work, Mental Health, M&F,
CEUs will be available
(\$75 pre-registration; \$90 onsite)*

**FAU Jupiter MacArthur
Campus**

Administrative Bldg. - Auditorium
5353 Parkside Drive
Jupiter, FL 33458

About the Presentors

Joshua M. Nadeau, PhD, is a licensed clinical psychologist who supervises the clinical treatment team in the partial hospital and intensive outpatient programs for children, adolescents and adults at Rogers Behavioral Health—Tampa Bay. In addition to his role as clinical supervisor for Rogers, Dr. Nadeau holds a research faculty position with the pediatrics department at USF Health Morsani College of Medicine, University of South Florida. In his research and practice, Dr. Nadeau focuses on the use of cognitive behavioral therapy for the treatment of obsessive-compulsive and related disorders, as well as in the adaptation of evidence-based techniques to address the unique needs of youth and adults with autism spectrum disorder (ASD) and other neurodevelopmental disorders.

Training Description

This presentation will introduce Cognitive Behavioral Therapy as an evidence-based intervention in working with individuals with ASD. CBT strategies will be modeled along with techniques and modifications.

Training Objectives

At the conclusion of this presentation, participants will be able to:

1. List and explain the reasons for increased incidence of comorbid anxiety and mood disorders among individuals with ASD.
2. Discuss research findings associated with treatment modifications to address the unique needs of individuals with ASD and comorbid anxiety and/or mood disorders.
3. Provide specific examples of evidence-based modifications to CBT for anxiety and mood disorders among individuals with ASD.

Registration Information:

**REGISTRATION IS
MANDATORY**

DEADLINE: May 10, 2018

Limited to first 250 participants

To view this presentation onsite or
online, register online at:
<https://mentalhealth2018.eventbrite.com>

For more information, contact:
CARD@fau.edu or 561-297-2023

Directions:

For directions click [HERE](#)

*Be sure to contact your ESE District Staff or
Staff Development Contact to determine the
process for receiving in-service.*

** 6 Social Work, Mental Health, M&F
CEUs will be available*

MEETING OUR HEROES

By: Cathy Allore, M.Ed

We all have had dreams of meeting our heroes. However, that's not always possible, but for one Port St Lucie boy with autism his dream was realized on Wednesday, November 22, 2017. His mom met with me several weeks ago and expressed that her son, Dalton had dreams of becoming a police officer. I offered to facilitate a meeting with him and the academy where officers train in St Lucie County. The coordinator for that program suggested a tour with the local law enforcement agency...Port St Lucie Police Department. He put me in contact with Officer Scott Johnson. Working with Jamie at Port St Lucie Police Department we scheduled the visit for Dalton on November 22.

The Port St Lucie Police Department officers were amazing in their interaction with Dalton. Mom told me, "It's so emotionally overwhelming to see your child's dream come true. Thank you Cathy for making this happen."

Dalton was able to meet with the SWAT team and check out the equipment and vehicles. He toured the entire facility meeting staff in all departments, seeing where those arrested are processed, and where a suspect is interviewed.

Dalton really enjoyed his visit and meeting all the officers, including Chief Bolduc. Chief John Bolduc joined the tour from the beginning to the end often times being the one to escort Dalton, his mother, and myself through the tour. The Port St Lucie Police Department was very welcoming to Dalton and spent time making sure he received a quality experience.

Thank you to Chief Bolduc and the entire Port St Lucie Police Department.

More pics: <https://www.facebook.com/PortStLuciePolice>



Regional Trainings are hosted by the Center for Autism and Related Disabilities, through the Partnership for Effective Programs for Students with Autism (PEPSA), a program funded by the State of Florida, Department of Education, K-12 Public Schools, Bureau of Exceptional Education and Student Services, through federal assistance under the Individuals with Disabilities Education Act (IDEA), Part B. www.DOEpartnership.org

Thank You For Celebrate With Us

★ OCTOBER 19, 2017 ★

iRISE² Mentoring Day!



IRISE2 DISABILITY MENTORING DAY 2017 WAS A GREAT SUCCESS!!

This year on Thursday October 19th our FAU CARD and business partners throughout PBC recognized and supported iRISE2 Disability Mentoring Day. The goal of this day of recognition is to educate and advocate for our teens and young adults impacted by autism or a disability with local opportunities for skill building and career exposure with FAU CARD supported business partners.

Here are a few highlights from this year's 2017 iRISE2 Disability Mentoring Day:

- (25) Students and individuals with disabilities were served throughout PBC.
- (5) Community Business partners provided job-shadowing opportunities for 6 students.
- (2) Young adults impacted by a disability have been offered formal part-time competitive employment.
- (10) students attended a Pre-Employment workshop to prepare for interviews with employers and local volunteer organizations.
- We raised awareness and built new relationships with 3 new business in our PBC community.
- Our impact for Autism Student Organization raised nearly \$120.00 in donations at our car wash and mentor recruitment event.

We would like to extend a big Thank You, to all the following participating 2017 iRISE2 Disability Mentoring Day Business Partners:

CareerSource of Palm Beach West Palm Beach, FL

Applebee's Restaurant Boynton Beach, FL

The City of Boynton Beach: Human Resources Office Boynton Beach, FL

Velocity Community Credit Union Palm Beach Gardens, FL

Sam May, Certified Public Accountant Boca Raton, FL

Roger Dean Stadium Jupiter, FL

United Way of Palm Beach County, FL

Thank you so much for opening your business and sharing your knowledge and experience while impacting the lives of our youth. It is because of your generous contribution, we have been able to resonate a positive and encouraging climate that is helping to provide more competitive employment opportunities for individuals with disabilities in our community. We look forward to supporting you and your continuous involvement with FAU CARD and our iRISE2 Mentoring Program.

TREASURE COAST PARENT SUPPORT GROUPS:

Disability Support Network of the Treasure Coast

Disability Support Network is a parent support group meeting to provide support and information for parents of individuals with special needs, not specifically for those living with autism spectrum disorders.

When: 3rd Thursday of each month from 6:45 - 8:30 p.m. in either Martin or St Lucie.

Where: TBA at a local restaurant. Like them on Facebook for meeting notifications.

RSVP: puzzledfamilies@gmail.com

https://www.facebook.com/groups/131030553607709/?ref=br_rs

S.O.U.L. (Supporting, Overcoming, Understanding, & Loving)

Meets in Martin County and is for those families living with autism spectrum disorders. This is not a religious meeting, but for education and q & a. The goal of the group is to provide resources to those families attending.

When: 1st Monday of the month from 6:30 - 8 p.m.

Where: Covenant Fellowship Church @ 2880 SE Aster Lane in Stuart.

For More info contact Rhonda Oksman, Founder/Facilitator

Email: rhonda.oksman@gmail.com

<https://www.facebook.com/SoulSupportGroup>

A Mommy Corner

Parent/family support group meeting in St Lucie County. Started and run by two moms of special needs children. The group's mission is to inspire and encourage; educate and empower to bring about positive change in your and your child's life. Join the group to gain and give advice, develop friendships, and find inspiration.

When: TBA – monthly meeting details shared on Facebook

Where: Sun Up Center, 2455 5th Street SW, Vero Beach, FL

<https://www.facebook.com/amommycorner/>

RSVP: amommycorner@gmail.com or 772-882-1376

FAU CARD Online Trainings

FAU CARD has developed this library of online training presentations that are available for you to view.

Visit our website: <http://coe.fau.edu/centersandprograms/card/tutorials.php>

- Overview of Autism Spectrum Disorders
- A Journey of Success: Navigating Systems

In the Home

- Guardianship Options
- Support for Grandparents
- Strategies for Increasing Homework Success
- Toilet Training

In the School

- ASD & the Reading Comprehension Challenge: What Can You Do?, created by UM-NSU CARD
- Classroom Set-up
- Count on It! Strategies to Teach Math Skills to Students with ASD, created by UM-NSU CARD
- Enhancing Engagement in Science
- Strategies for Increasing Homework Success

Behavior Series

- **Part 1:** Understanding Why Problem Behaviors Occur
- **Part 2:** Building Play and Leisure Skills
- **Part 3:** Environmental Setup and Visual Strategies
- **Part 4:** Developing Requesting and Protest Skills
- **Part 5:** Token Economies and Behavioral Contracts





ABA Therapy Solutions, LLC

St. Lucie West ABA Clinic

Opening January 2, 2018

Serving . . .

Toddlers through age 5 who are diagnosed with autism, Down Syndrome, and related developmental disabilities.

Our Services

- ♦ One-on-one and small groups for socialization
- ♦ Verbal Behavior—Communication and Language Development
- ♦ Toilet training, dressing, hygiene, feeding therapy
- ♦ Pre-Academic Skills
- ♦ Development of Play and Social Skills
- ♦ Decreasing Problem Behaviors
- ♦ Parent Training
- ♦ Full day program available
- ♦ Hours: 9 through 6



Why Choose ABA Therapy Solutions?

Our programs and treatment plans will be based on assessment data and current research in Applied Behavior Analysis (ABA) as well as your child's individual needs.

Insurances

Accepting Aetna, AvMed, Blue Cross Blue Shield, Cigna, CMS 19 and 21, Magellan, Medicaid, United Healthcare, and Tricare.

Providing individualized and evidence-based solutions to improve the quality of life for individuals with autism and related disabilities. Applied Behavior Analysis (ABA) is a scientific, data-based field that has utilized principles of learning and behavior for over 30 years.

FOR PRIMARY CARE PROVIDERS

By: Rosie Portera, M.S., CCC-SLP



If I had a nickel for every time I heard a parent of a young child say, "My pediatrician wants to wait and see" only to find out 6 months to a year later that their child has a development disability..... Every child regularly visits their pediatrician. These professionals play an important role in early identification and intervention. Unfortunately, most pediatricians, pediatric nurse practitioners and other related health care specialist have not been trained to identify the early "Red Flags" for autism spectrum disorder. The "Red Flags" are often subtle but can be seen by the trained eye as early as 12 months of age, even before characteristics are prominent or a diagnosis is appropriate. Another reason for them to feel hesitant about giving possibly devastating news to a parent is they want to be sure that there are issues. So, they wait for more obvious signs and larger gaps in development to occur. So families get a "Let's wait and see" response.

I imagine it can be VERY devastating to hear that your child may have a neurologically-based disability, but avoiding the discussion has an effect, too. Usually on the child. But also on the family. Especially when mom reports that she knows something isn't right. So, how can these primary care providers begin to develop competencies and the confidence to discuss what those "Red Flags" are and support families as they start their autism journey? AutismNavigator.com

The brilliant clinicians and researchers at The Florida State University School of Medicine have developed a FREE (to Floridians) online training to meet this important early identification need. They have created an online course, Autism Navigator for Primary Care Providers. This interactive web-based professional development course is designed for individuals who work with the general pediatric population. The mission is to increase Primary Care Provider's ability to administer universal screening to improve early detection of ASD, make referrals for children with or at risk for ASD, and help families access resources, support and early intervention sooner. They also offer clear guidelines for how health care professionals can start the conversation with families.

The course is for physicians and other healthcare providers in primary care, service coordinators and other team members in early intervention systems making decisions about eligibility, as well as child development specialists in early learning environments who screen and make referrals. The self-paced 8-hour course integrates current research with video illustrations of over two dozen toddlers with ASD and families participating in early screening, diagnosis and interventions. Course participants can earn CMEs or other continuing education units. Once the course is complete, primary health care providers have access to the tiered system of family supports with an online screening tool, Social Communication Growth Charts and other amazing resources for the families they serve.

Please share Autism Navigator for Primary Care Providers with your child's pediatrician. If they say they are too busy to commit to the 8-hour course, let them know that Autism Navigator offers a tapered down 1 ½ course to spark their interest in becoming better prepared to confidently provide early identification of ASD and facilitate more positive outcomes for the youngest of their patients. **Once ASD or the "Red Flags" have been identified, providers should refer families to FAU CARD for more information, resources and supports. 1-800-9Autism or www.autism.fau.edu**

We would like to express our most sincere gratitude to all of the families and professionals who continue to support FAU CARD.

If you or your organization would like to contribute to FAU CARD, donations can be made out to:



FAU Foundation - CARD

and mailed to our office at:

**FAU CARD
Department of ESE
777 Glades Road
Boca Raton, FL 33431**

Or visit:

<https://fauf.fau.edu/NetCommunity/SSLPage.aspx?&pid=1151>

and select Center for Autism & Related Disabilities (C.A.R.D.) as the designation

FAU

**CENTER FOR AUTISM AND
RELATED DISABILITIES**
Florida Atlantic University