



OFFICE OF EDUCATIONAL LEADERSHIP LEARNING (OELL)

Empowering Educators for Excellence

FEATURED PROFESSIONAL LEARNING

Coaching for Educational Leadership

Empowering Educational Leaders to Enhance Leadership through Coaching

Purpose: This professional learning program is one of three strands utilizing OELL's **Five Keys of Coaching for Educational Excellence** model and designed to support school and district leaders as they apply The Five Keys through active experiences in *Building Relationships*, *Leveraging Resources*, demonstrating *Data Literacy*, practicing *Listening*, *Observing*, *Questioning*, and *Providing Feedback*. This includes developing coaching skills across varied administrative contexts, supporting talent development in both instructional and non-instructional settings.

Professional Learning Aims

- **Build Mutual Respect and Understanding.** Establish mutual respect by sharing your coaching style, reflecting on teaching approaches, and engaging in meaningful discussions about growth.
- **Stimulate Data-Informed Growth and Improvement.** Leverage data to understand current practices, foster growth-focused relationships, and guide others to set professional goals.
- **Encourage Vision and Goal Setting.** Help others define their vision for success, articulate improvement goals, and co-develop a strategic action plan aligned with their aspirations.
- **Elevate Strategic Planning and Resource Support.** Provide guidance on resources and supports to ensure actionable, data-informed plans, while offering encouragement and assistance during implementation.
- **Ensure Monitoring and Continuous Improvement.** Support progress through coaching cycles of continuous reflection to refine strategies for sustained improvement.

Professional Learning Components and Benefits

- **Leadership Development.** Focused on effective coaching strategies to scale up leadership skills.
- **Measure of Success.** Coaches will self-assess their effectiveness using an evidence-based tool.
- **Comprehensive Coaching Plans.** Support implementation of evidence-based coaching practices to improve educational outcomes.
- **District-wide Network Participation.** Opportunities to share challenges and best practices with fellow district leaders.

The Department of Educational Leadership and Research Methodology School Leaders Program

Office of Educational Leadership Learning

Managing and Transforming School Leadership Preparation and Development

Vision	We envision a healthy, democratic, and just society that promotes human dignity and fulfillment through education.
Mission	To promote excellence in education dedicated to meeting the needs of all students by identifying needs and engaging in the construction and implementation of innovative and dynamic professional learning experiences and services for K-12 educators, institutions, districts, policymakers, and any other interested parties.
Who We Are	We are a diverse team of consultants, researchers, administrators, and educational practitioners dedicated to educational research, practice, and professional learning.

Research-Based Practices

All our professional learning offerings and programming are research-based and aligned with the latest findings from Grissom et al. (2021), highlighting leadership skills and behaviors that contribute to improvements in school and student outcomes.

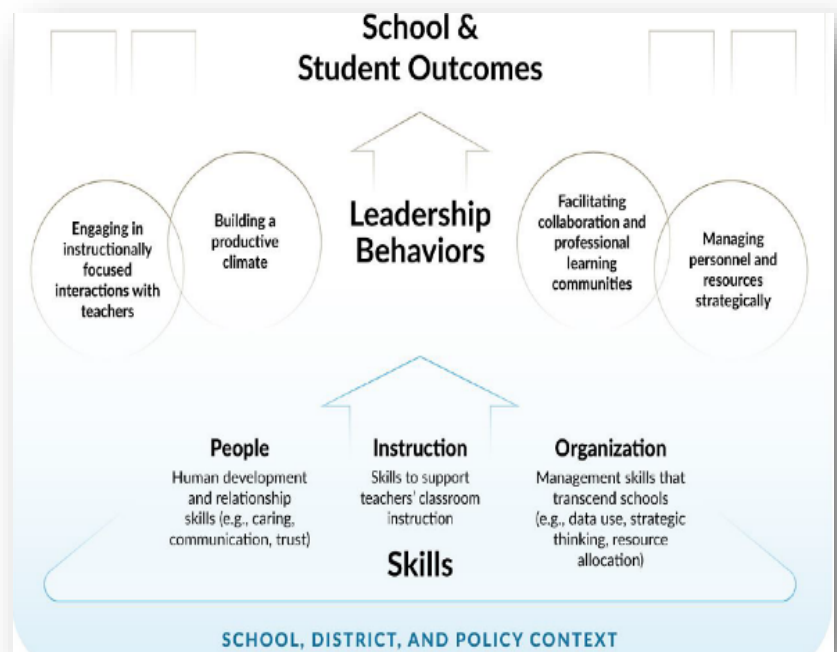
Tailored Professional Learning

We develop professional learning tailored to district needs. Our goal is sustainability within districts, leveraging a train-the-trainer model to ensure the professional learning systems we develop can be sustained over time.

Flexible Programming Options:

We offer various delivery methods to meet the specific needs and business practices of your district, including:

- **Virtual Sessions:** Convenient for participants, with flexibility in scheduling.
- **In-Person Workshops:** Engaging face-to-face interactions, fostering collaboration.
- **Blended Approach:** Combines virtual sessions with periodic in-person workshops for a balanced experience.



FOR MORE INFORMATION EMAIL: baumanc@fau.edu

Set up an appointment today to develop a professional learning plan
tailored to the unique needs of your district.