



OFFICE OF EDUCATIONAL LEADERSHIP LEARNING (OELL)

Empowering Educators for Excellence

FEATURED PROFESSIONAL LEARNING

Effective School Leadership Teams Professional Learning Overview

Empowering School Leaders to Build Effective School-Based Instructional Leadership Teams

Purpose: This professional learning is designed to support school leaders in building high-functioning leadership teams that drive student achievement and schoolwide improvement. High-functioning teams are intentionally built and are, on average, five times more productive than average teams.

Team Composition & Goals: OELL provides a unique experience for school and district leaders to participate in vertical-based leadership teams comprised of a principal supervisor, principal, assistant principal, and a teacher leader from the same school. The goals include:

- Develop an effective school leadership team centered on addressing the unique problem of practice of each individual school-based leadership team;
- Grow individual and collective leadership practices as defined by the Florida Standards for Professional Learning, the Florida Educational Leadership Standards (FELS), the research report *How Principals Affect Students and Schools* (Grissom et al., 2021), and research on change leadership;
- Create a comprehensive leadership team action plan to support implementation of evidence-based practices and policies that address relevant problems of practice and improve educator practice and student outcomes at the school and district levels; and,
- Participate in a district-wide learning network of participant teams in role-alike learning to share common challenges and effective strategies.

Professional Learning Components and Benefits

- **Leadership Development:** Focused on effective team-building strategies and scaling up leadership skills.
- **Measure of Success:** Teams will self-assess their functionality using an evidence-based tool.
- **Comprehensive Team Improvement Plans:** Support implementation of evidence-based practices and policies addressing an identified problem of practice centered on equity.
- **District-wide Network Participation:** Opportunities to share challenges and best practices with fellow district leaders.

*The Department of Educational Leadership and Research Methodology School Leaders Program
Office of Educational Leadership Learning
Managing and Transforming School Leadership Preparation and Development*

Vision	We envision a healthy democratic and just society that promotes human dignity and fulfillment through education.
Mission	To promote excellence in education dedicated to meeting the needs of all students by identifying needs and engaging in the construction and implementation of innovative and dynamic professional learning experiences and services for K-12 educators, institutions, districts, policymakers, and any other interested parties.
Who We Are	We are a diverse team of consultants, researchers, administrators, and educational practitioners dedicated to educational research, practice, and professional learning.

Research-Based Practices

All our professional learning offerings and programming are research-based and aligned with the latest findings from Grissom et al. (2021), highlighting leadership skills and behaviors that contribute to improvements in teaching and learning.

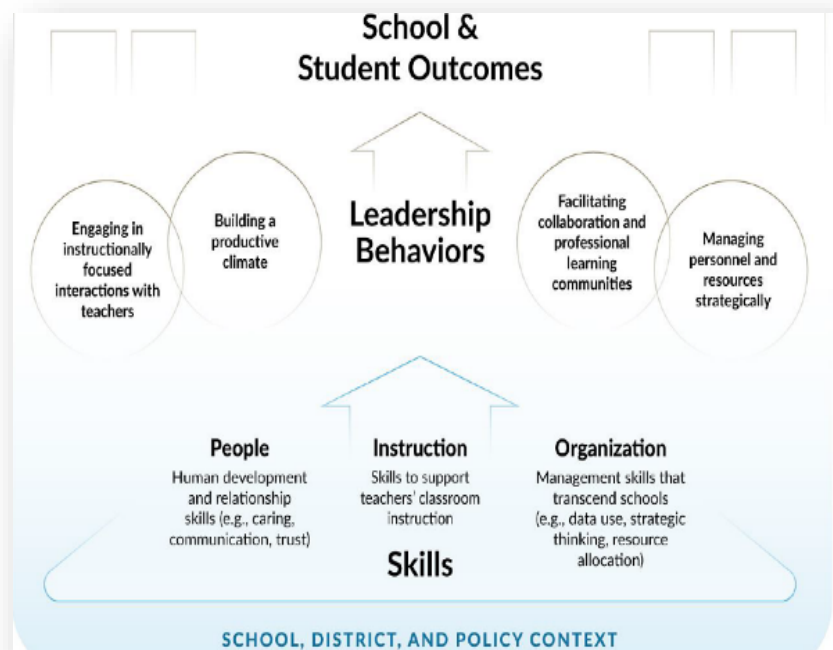
Tailored Professional Learning

We develop professional learning tailored to district needs. Our goal is sustainability within districts, leveraging a train-the-trainer model to ensure the professional learning systems we develop can be sustained over time.

Flexible Programming Options:

We offer various delivery methods to meet the specific needs and business practices of your district, including:

- **Virtual Sessions:** Convenient for participants, with flexibility in scheduling.
- **In-Person Workshops:** Engaging face-to-face interactions, fostering collaboration.
- **Blended Approach:** Combines virtual sessions with periodic in-person workshops for a balanced experience.



FOR MORE INFORMATION EMAIL: mfritz1@fau.edu

Set up an appointment today to develop a professional learning plan tailored to the unique needs of your district.