

FLORIDA ATLANTIC UNIVERSITY



**FLORIDA EDUCATOR PREPARATION  
AND LEADERSHIP NETWORK (FEPLN)  
*NOVEMBER MEETING***

**OFFICE OF EDUCATIONAL LEADERSHIP LEARNING**

November 6, 2024

1:00 PM

# The Office of Educational Leadership Learning (OELL)

FAU School Leaders  
Program's Professional  
Learning

## **Vision**

We envision a healthy, democratic, and just society that promotes human dignity and fulfillment through education.

## **Mission**

In order to promote excellence in education dedicated to meeting the needs of all students, our mission is to identify needs and engage in the construction and implementation of innovative and dynamic professional learning experiences and services for K-12 educators, institutions, districts, policy makers, and any other interested parties.

## **Who are we?**

We are a diverse team of consultants, researchers, administrators, and educational practitioners dedicated to educational research, practice, and professional learning.

# Office of Educational Leadership Learning



- Daniel Reyes-Guerra, Executive Director
- John E. Critelli, Jr., Director - Grants Development and Administration
- Matthew Fritzius, Director - Research, Development, and Special Projects
- Cynthia Bauman, Associate Director - Learning Programs
- Kimberley McKeag, Manager - School Leaders Operations
- Christina Butler, Administrator - Professional Development





# OELL Consultants

Diverse group of experts who collaborate with the OELL Team to develop and deliver professional learning



# Today's Agenda

- Welcome and Introductions
- Network Vision and Logistics
- Welcoming Ritual
- Kickoff Meeting Feedback
- Breakout Activity
- Updates
- Results from Kickoff Meeting Activity
- Session Feedback
- Florida Department of Education: Q&A
- What to Expect Next
- Optimistic Closure



# Network Vision

- To build a collaborative learning community that empowers district leaders across Florida to grow, innovate, and share expertise. We aim to create a sustainable support system that:
  - Empowers leadership at the district level to enhance professional learning and growth.
  - Stays ahead of the evolving educational landscape by anticipating change and adapting.
  - Strengthen our collective impact through shared learning, problem-solving, and support.



# FEPLN Monthly Meeting Logistics

## Meeting Schedule

- First Wednesday of **every** month at 1 PM
- Calendar invite will be sent to your email

## Zoom Information

- Meetings will be held on Zoom
- Meetings are recorded and archived on the OELL FEPLN webpage for later access

## Topics/Themes and Participation

- Meeting themes are determined by FEPLN members
- Your voice shapes our focus—let's collaborate!

# Professional Learning Norms



Equity of Participation	Active Listening	Respect for All Perspectives
<b>Pause</b> <ul style="list-style-type: none"><li>• Leave quiet time for others to think and process</li></ul> <b>Pay attention to self and others</b> <ul style="list-style-type: none"><li>• Let everyone get their hands on the materials</li><li>• Step up and step back</li></ul> <b>Place ideas on the table</b> <ul style="list-style-type: none"><li>• "Here is one option..."</li><li>• "One thought I have is..."</li></ul>	<b>Paraphrase</b> <ul style="list-style-type: none"><li>• "So are you saying...?"</li><li>• "I think I heard... is that right?"</li></ul> <b>Be Present</b> <ul style="list-style-type: none"><li>• "I'm just going to turn my phone off so I can really listen to you."</li></ul>	<b>Presume positive intentions</b> <ul style="list-style-type: none"><li>• "What ideas do you have about how we can improve?"</li><li>• "Tell me more about your thinking"</li></ul> <b>Probe</b> <ul style="list-style-type: none"><li>• "Please say more about..."</li><li>• "I'm curious about..."</li></ul>

Adapted from Adaptive Schools <http://www.thinkingcollaborative.com/norms-collaboration-toolkit/>  
and the New Teacher Center [www.newteachercenter.org](http://www.newteachercenter.org)

Teacher Institute  
on Science  
and Sustainability

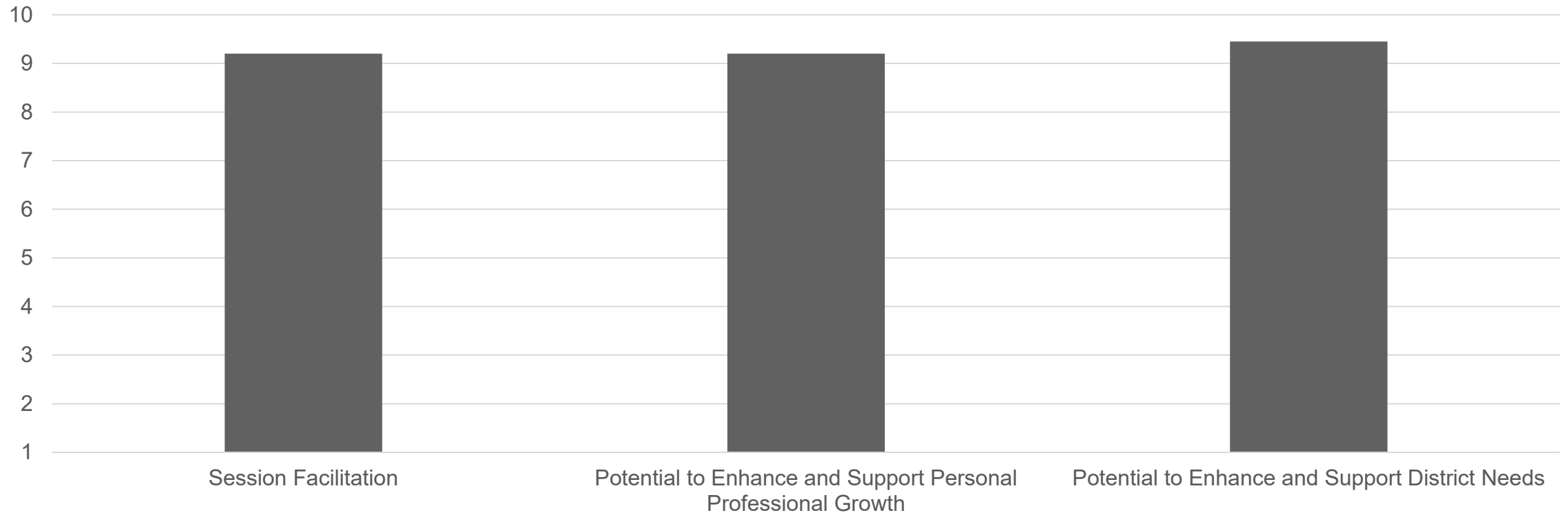


[illegible]

- 
- A top-down view of a rustic autumn-themed still life. The scene is set on a light-colored, textured surface. In the upper left, a large white bowl filled with dark brown soup sits next to a bundle of cinnamon sticks. To its right, a plate holds several pieces of roasted meat or fish. Further right are two small pumpkins, one orange and one white. Below the soup, a large white plate is piled with golden-brown fried dumplings or bread. To the right of this, there's a bowl of vibrant green mashed avocado topped with herbs, and another bowl containing a colorful salad of roasted vegetables and nuts. A woven basket holds a dish of croutons or bread cubes. In the lower center, a plate features grilled salmon fillets. The bottom right corner shows a bowl of fresh green salad with pomegranate seeds and cheese. Several small glass cups and a wooden spoon are scattered around the dishes. A black silhouette of a person stands in the middle ground, looking towards the food. The overall atmosphere is warm and inviting, typical of fall gatherings.
- # Welcoming Ritual
- Drop in the chat:
  - What is your “go-to” Fall food or drink?
  - Can even be a Thanksgiving dish



# October Kickoff Meeting Feedback



# Kickoff Meeting Feedback



INTRODUCTIONS



VALUE FROM FLDOE UPDATE



COLLABORATING, SHARING  
BEST PRACTICES, AND  
LEARNING FROM  
COLLEAGUES



CLARITY AROUND PURPOSE

# Network Vision

- To build a collaborative learning community that empowers district leaders across Florida to grow, innovate, and share expertise. We aim to create a sustainable support system that:
  - Empowers leadership at the district level to enhance professional learning and growth.
  - Stays ahead of the evolving educational landscape by anticipating change and adapting.
  - Strengthen our collective impact through shared learning, problem-solving, and support.







# FEPLN Mission Development

---

What should be the focus and activities of this network?

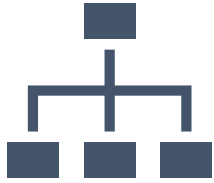


What outcomes would you like to see from this network?



What are your concerns around the network?

# Breakout Group Activity Instructions (20 Minutes)



## Group Roles:

Elect a Facilitator (to lead the discussion), a Timekeeper, and a Secretary (to record key points)



## Step-by-Step Breakdown:

First 5 Minutes: Each participant briefly introduces themselves (name and organization)

Next 15 Minutes: The Facilitator leads the group in conversation around the mission development questions

- Secretary records responses on Padlet



# Group Activity Results



# What are the top challenges related to Instructional Leadership Coaching?

Balancing  
Instructional and  
Managerial  
Responsibilities

Consistency and  
Quality of Coaching  
Support

Time Constraints  
and Prioritization

Resource  
Limitations and  
Capacity Building

Building a  
Supportive Culture  
for Coaching and  
Leadership  
Development



# Bring Your Best Practices For Next Meeting

- What does your district do to address these challenges?

# OELL FEPLN Website (Coming Soon!)

- Our new **OELL FEPLN website** will be your go-to hub for all things FEPLN. Here's what you can expect once it goes live:
- **Central Resource Repository**  
**Network Meeting Materials File Locker**
  - Agendas, minutes, and recordings of our meetings
  - Relevant resources to support your work
  - FAQs
- **Spring Convening Information**  
Stay updated on the upcoming spring convening details.
- **Stay tuned** for more information as we finalize the website, making it easier than ever to access everything you need in one place!

# **Spring Convening Update**





# Session Feedback

Florida Educator Preparation and  
Leadership Network (FEPLN)  
November Session Feedback





## Department of Education Leadership



Dr. Sunny Chancy  
Deputy Chancellor  
Educator Quality



Dr. Paul Burns  
Senior Chancellor

## FDOE – Bureau of Educator Recruitment, Development & Retention



Dr. Josey McDaniel  
Bureau Chief

### BERDR Retention Team



Ashley Harvey  
Director of Professional Learning and  
Educator Retention



Tiani Snelling  
Professional Learning Specialist



Katherine Parish  
Leadership Programs Specialist

# FDOE: Network Q&A

- Use the QR Code or link in chat to record additional questions that were not addressed during this Q&A
- Have a more direct question for us? Email: [professionallearning@fldoe.org](mailto:professionallearning@fldoe.org)



# What to Expect at the Next Meeting

## Key Topics

- Activity Share-Out: Review results from today's discussions.
- Spring Convening: Planning for upcoming professional learning sessions.
- Updates on the FEPLN Website and its launch.

## Upcoming Meeting Dates

- Next Meeting: December 4, 2024, at 1 PM
- Future Meetings: January 8, 2025, February 5, 2025, March 5, 2025, April 2, 2025, and May 7, 2025.

## Meeting Details

- A calendar invite with the meeting link will be sent in advance.

# Optimistic Closure

Drop in the chat an Emoji that describes how you are feeling right now.



Drop your response in the chat! ✨



A close-up photograph of a red pen with a textured, rubberized grip pointing towards a calendar grid. The calendar is white with black numbers for the days of the month. The numbers 10, 11, 16, 17, 18, 24, and 25 are visible. The text 'See you on December 4th!' is overlaid in a white, bold, sans-serif font with a subtle drop shadow, centered horizontally across the middle of the image. The pen is positioned diagonally from the top left, with its tip pointing towards the center of the calendar grid.

**See you on December 4<sup>th</sup>!**