

# Certificate of EARLY CHILDHOOD ENVIRONMENTAL EDUCATION



## THE CERTIFICATE

The **Certificate in Early Childhood Environmental Education** provides an opportunity for students to earn a specially designed 12-credit certificate. This certificate's unique focus prepares individuals to develop innovative programs and to guide children's environmental interest. The specialized coursework encompasses foundations of early childhood environmental education to exploring natural habitats and community engagement.

## OVERVIEW

### ADVISING

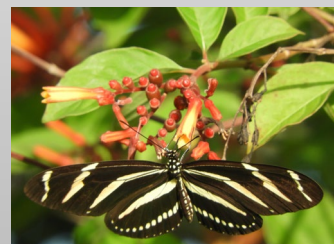
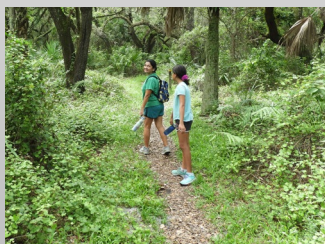
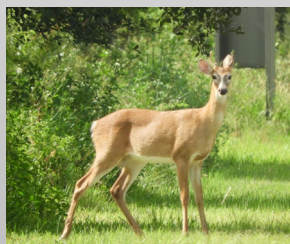
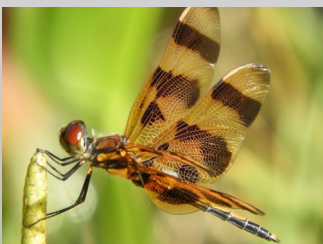
An advisor will be assigned upon acceptance into the program.

### FOR MORE INFORMATION:

Contact Yash Bhagwanji, Ph.D. at  
[ybhagwan@fau.edu](mailto:ybhagwan@fau.edu)

### CORE COURSES – 12 Credits

EEC 4020 Found. of Early Childhood Env. Education  
EEC 4237 Exploring Natural Habitats as a Curriculum  
for Young Learners  
EEC 4404 Comm. Engage. in Early Child. Env. Educ.  
ELECTIVE--courses list on web page





# How to **APPLY**

The image shows the Florida Atlantic University (FAU) logo in large, white, three-dimensional letters. Below the logo is a blue sign with the words "FLORIDA ATLANTIC UNIVERSITY" in white capital letters. The background features palm trees and a clear blue sky with some clouds.

**FLORIDA ATLANTIC UNIVERSITY**

## **APPLICATION**

Prospective students are invited to learn more by visiting this page and submitting contact information:

<https://www.fau.edu/education/academicdepartments//curriculum-instruction/academic-programs/other-programs/certificate-early-childhood-environmental-education/>

## **ADMISSION REQUIREMENTS**

### **GRANT SUPPORT**

Grant-funded tuition support may be available to students without other sources of financial aid. Current FAU students and new non-degree students may also be eligible for SEEK Scholarship if employed at private and public schools with Children's Services Council of Palm Beach County contracts. Non-degree seeking students may be eligible for grant-funded scholarship, but it is not guaranteed.

**NO PREREQUISITES • FULLY ONLINE • 12 CREDIT HOURS**

### **READY TO APPLY?**

Non-degree and current students, go to [FAU | Apply](#)

Learn more about applying to FAU COE/DSE by contacting the [Office for Academic and Student Services](#).



[dcf@fau.edu](mailto:dcf@fau.edu)

FAU | Department of Curriculum and Instruction



561-297-3570