



FLORIDA ATLANTIC UNIVERSITY  

---

Foundation, Inc.

## The Kurt & Marilyn Wallach Holocaust and Jewish Studies Building



Dorothy F. Schmidt College of Arts and Letters

FUNDING OPPORTUNITIES



## LEADING THE WAY FOR A BETTER TOMORROW

More than three decades ago, **Florida Atlantic University** became the first of Florida's public universities to establish an eminent scholar chair dedicated exclusively to the study of the Holocaust. Over the years, we have built a dynamic center for Holocaust and Jewish Studies education, providing the knowledge and resources for students, teachers, faculty members and the community to learn Jewish culture and history — and to understand the lessons of the Holocaust. In a time of rising antisemitism, this work is more urgent than ever. Florida Atlantic continues to set the example for the nation's universities to follow.

It makes me incredibly proud to lead a university where all people are treated with dignity and respect. Together, we continue to make Florida Atlantic the most welcoming, safest and most engaging institution for Jewish life in the country. Here, scholars, practitioners and community leaders engage in themes of nonviolence, peace, and diplomacy to confront antisemitism and hate of all kinds.

It could not have been more fitting that Kurt and Marilyn Wallach chose Florida Atlantic as their partner in establishing the Kurt and Marilyn Wallach Holocaust and Jewish Studies Building. As the home of Florida Atlantic's Holocaust education, Jewish studies, Leon Charney Diplomacy Program and other related programs, it will be a welcoming epicenter for educational engagement.

The Wallach Building is also the embodiment of something much greater — a destination for visitors from throughout South Florida and beyond to gather for cultural performances, lectures and exhibits that imbue a deep understanding and respect for humanity. As the home of the Craig and Barbara Weiner Holocaust Museum of South Florida at Florida Atlantic, Holocaust relics will bring greater meaning to this dark historical period; and through the George and Irina Schaeffer Dimensions in Testimony interactive display, visitors will hear the firsthand accounts of survivors.

In addition, the Wallach Building will foster greater collaborations through Florida Atlantic's partnerships with Israel developed through the Florida-Israel Institute — a state initiative to strengthen educational, economic, research and cultural ties between Florida and Israel, and one which we continue to champion.

Now more than ever, we embrace the words of Kurt and Marilyn Wallach and other benefactors who strongly believed that education is our best hope against hatred.

Adam Hasner  
President

## The Wallachs' *inspirational gift*

Kurt and Marilyn Wallach share a lifelong commitment to Holocaust education, ensuring the lessons of that horrific point in our world's history remain relevant today and for future generations.

Kurt's childhood was entrenched in danger, forced to flee with his family to escape the Nazis. While he and his immediate family made it to America, more than 200 of his family members were killed during the Holocaust. He made it his life's mission to ensure that his family and all those who perished during the Holocaust are never forgotten. He lectured and authored many books about the Holocaust, including *Remembering Mark*, the story of his father's life during the Hitler Era, and their family's journey leaving Magdeburg, Germany, escaping first to Amsterdam and then to the United States.

Kurt and Marilyn Wallach's transformational gift to Florida Atlantic University has created the Kurt and Marilyn Wallach Institute for Holocaust and Jewish Studies, with a portion used as the lead gift to construct the Wallach Building. It will be the home of Holocaust, human rights, and Jewish Studies education and associated programs within Florida Atlantic's Center for Peace, Justice and Human Rights.



“We speak for those who cannot speak. We remember all the victims, including our family members who perished needlessly. No one should ever be subjected to such horror. We hope that through education we can provide that lives will be saved, and history will not be repeated.”

- Kurt Wallach





## TRANSFORMING OUR FUTURE THROUGH EDUCATION

Imagine a world where all people are treated with dignity and respect; where students and individuals in our communities and across the globe forever defeat genocide and threats to human rights, such as intolerance, antisemitism, and hate of all kinds.

At Florida Atlantic University, we believe that vision comes to life through education. That's why The Kurt and Marilyn Wallach Holocaust and Jewish Studies Building matters so much to our endeavor — and to our community.

With your philanthropy, you can complete the vision of Kurt and Marilyn to support education that ensures horrific episodes like the Holocaust never occur again. Their intention starts with a home where we educate students to understand other cultures, traditions and languages; prepare teachers to use history's lessons to combat the ignorance, fear and distrust that breeds hatred and violence; and engage our community in meaningful conversations and lifelong learning to expand our impact to individuals of all backgrounds.

That's why the Wallach Building — and its future institute — is mission-critical. By making the lessons of the past relevant today, we teach the importance of speaking up and acting against all forms of hatred.

We are indebted to the Wallachs for their transformational and lead gift and to all the generous benefactors who have linked arms with us to make Florida Atlantic University an epicenter of Holocaust and human rights education. We envision an exciting plan for a forward-looking facility to serve our many constituencies with the latest in technologically sophisticated learning spaces, including a state-of-the-art exhibition center, and recital/lecture hall.

Florida Atlantic University is on a journey to become the nation's leader in creating and assuring peace, justice and human rights — for all. You can fortify our foundation and transform the future through the world-class [Kurt and Marilyn Wallach Holocaust and Jewish Studies Building](#).

Warmly,

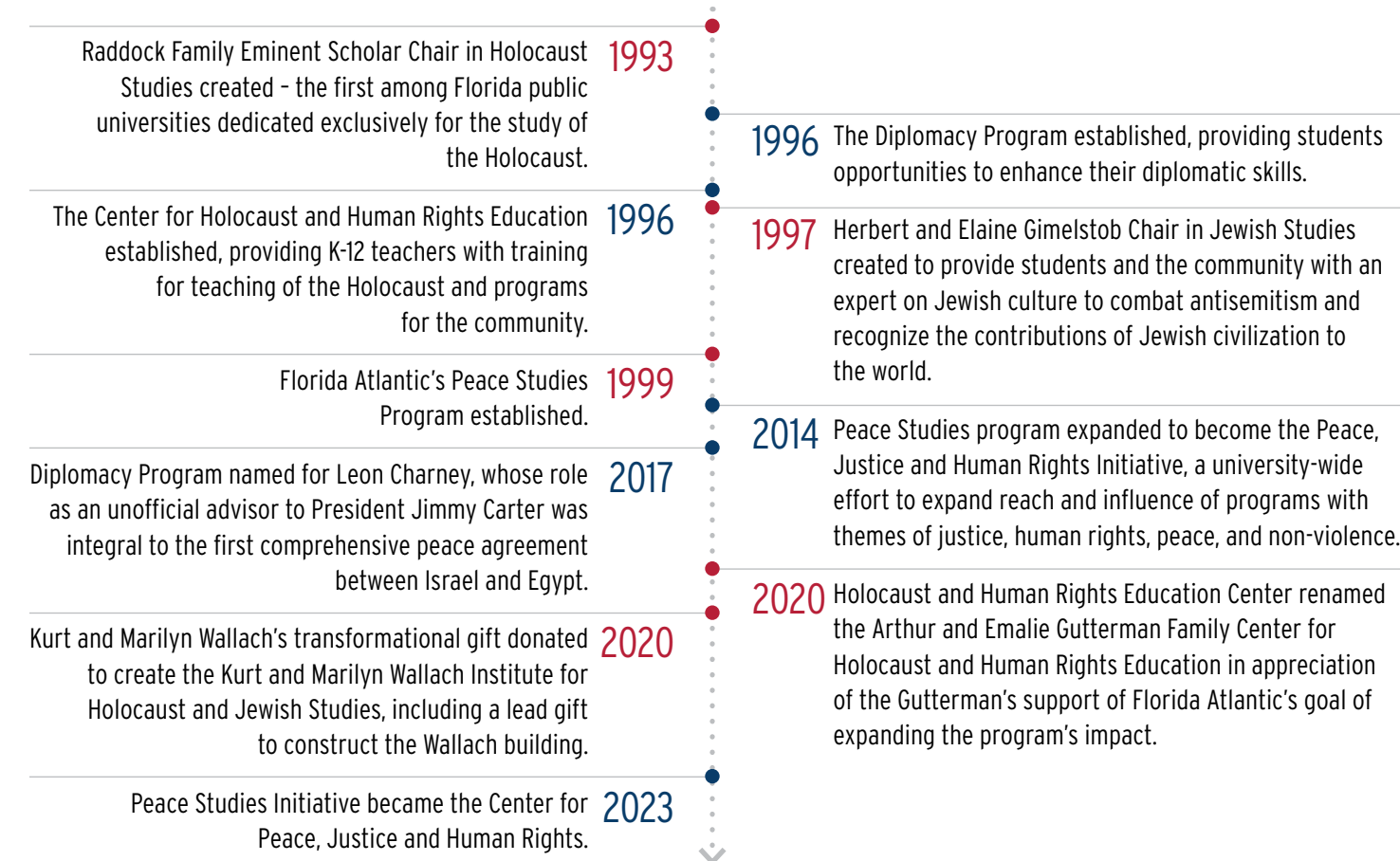


Michael J. Horswell, Dean  
Dorothy F. Schmidt College of Arts and Letters



## A HISTORY OF HOLOCAUST, JEWISH, AND PEACE STUDIES AT FLORIDA

Florida Atlantic is the proud home of a robust Holocaust and Jewish Studies program that offers both a major, minor and a concentration in the Comparative Studies doctorate program. Those collegiate programs, coupled with our K-12 teacher trainings through the Arthur and Emalie Gutterman Family Center for Holocaust and Human Rights Education, have imparted important lessons of the Holocaust to thousands of students.



## The Impact of Holocaust Education

According to results from a 2022-23 Echoes and Reflections\* survey, students exposed to Holocaust education demonstrate higher critical thinking skills and a greater sense of social responsibility, as well as civic engagement, if survivor testimony was part of their experience.

86%

of students agree that after the Holocaust lessons they are more aware of examples of antisemitism when they occur

69%

of students are more likely to challenge incorrect or biased information

72%

of students are motivated to challenge antisemitism when they encounter it

\*Echoes and Reflections is a partnership between the Anti-Defamation League, the USC Shoah Foundation, and Yad Vashem: The World Holocaust Remembrance Center.

CONNECTING OUR COMMUNITY AND  
CONNECTING WITH ISRAEL

Florida Atlantic University has strong and rich connections with Jewish organizations, resources, and collections. These connections enhance Jewish life and build an appreciation of Jewish culture among our students and those in the community.

FLORIDA-ISRAEL INSTITUTE

The University has established collaborations through the Florida-Israel Institute, which was created by the Florida Legislature in 1988. Its mission is to promote ties between Florida and Israel through academic, commerce, education and cultural relationships. The Florida-Israel Institute promotes cooperative research and education through sponsorship of student and faculty exchange, and development of bilateral trade through symposia and business forums. A premier feature of the Florida-Israel Institute is scholarship, carrying out the precept that knowledge is a key to human understanding and a powerful weapon against fear and hate. Through the Institute, Israeli students study on campuses throughout Florida. The Florida-Israel Institute is housed at Florida Atlantic and co-hosted by Florida Atlantic and Broward College.

Florida Atlantic is growing relationships with universities throughout Israel, including:

- Ariel University

Bar Ilan University

Ben-Gurion University

Haifa University

Hebrew University
- Shenkar College of Engineering,  
Design and Art

Technion, Israel Institute  
of Technology

Tel Aviv University

THE FOLLOWING  
ORGANIZATIONS ARE  
INTEGRAL TO EDUCATION  
AND LIFE AT  
FLORIDA ATLANTIC:

HILLEL OF BROWARD  
AND PALM BEACH

LEVINE WEINBERGER CENTER  
FOR JEWISH LIFE

JEWISH COLLECTION IN THE  
RECORDED SOUND ARCHIVES

THE JEWISH PRINT MUSIC  
COLLECTION



BUILDING A BEACON OF UNDERSTANDING

The Kurt and Marilyn Wallach Holocaust and Jewish Studies Building at Florida Atlantic will be a destination for people to learn the lessons of the Holocaust and a foundation for our vital work to ensure a world free from hate. Working together, we will build a beacon of understanding that unleashes opportunities for both our students and the community, where timeless lessons help create a better world for future generations.

▶▶▶ The Wallach building will be a destination for people seeking first-hand knowledge about the Holocaust, a place where the past injustices echo through the relics housed in the Craig and Barbara Weiner Holocaust Museum of South Florida at Florida Atlantic University; where Holocaust survivor stories are heard first-hand through the George and Irina Shaeffer Dimensions in Testimony interactive display; and an outdoor site where people gather for quiet reflection within the Marta and Jim Batmasian Memorial Pavilion, dedicated to the memory of 1.5 million Armenians who died in the Armenian genocide.

Through other exhibits, lectures, and cultural events held in the recital/lecture hall and the traveling exhibition hall located off the prominent Marilyn and Jay Weinberg Grand Lobby, the Wallach building will redefine the impact and outreach of our programs of excellence, ensuring that Florida Atlantic leads the region in Holocaust and Jewish Studies, human rights education, and leadership training.

We are also developing new curricula for the university and regional community, such as non-profit management and leadership certificates and/or academic minors, including Jewish Studies, Hebrew language, and Middle East Studies.

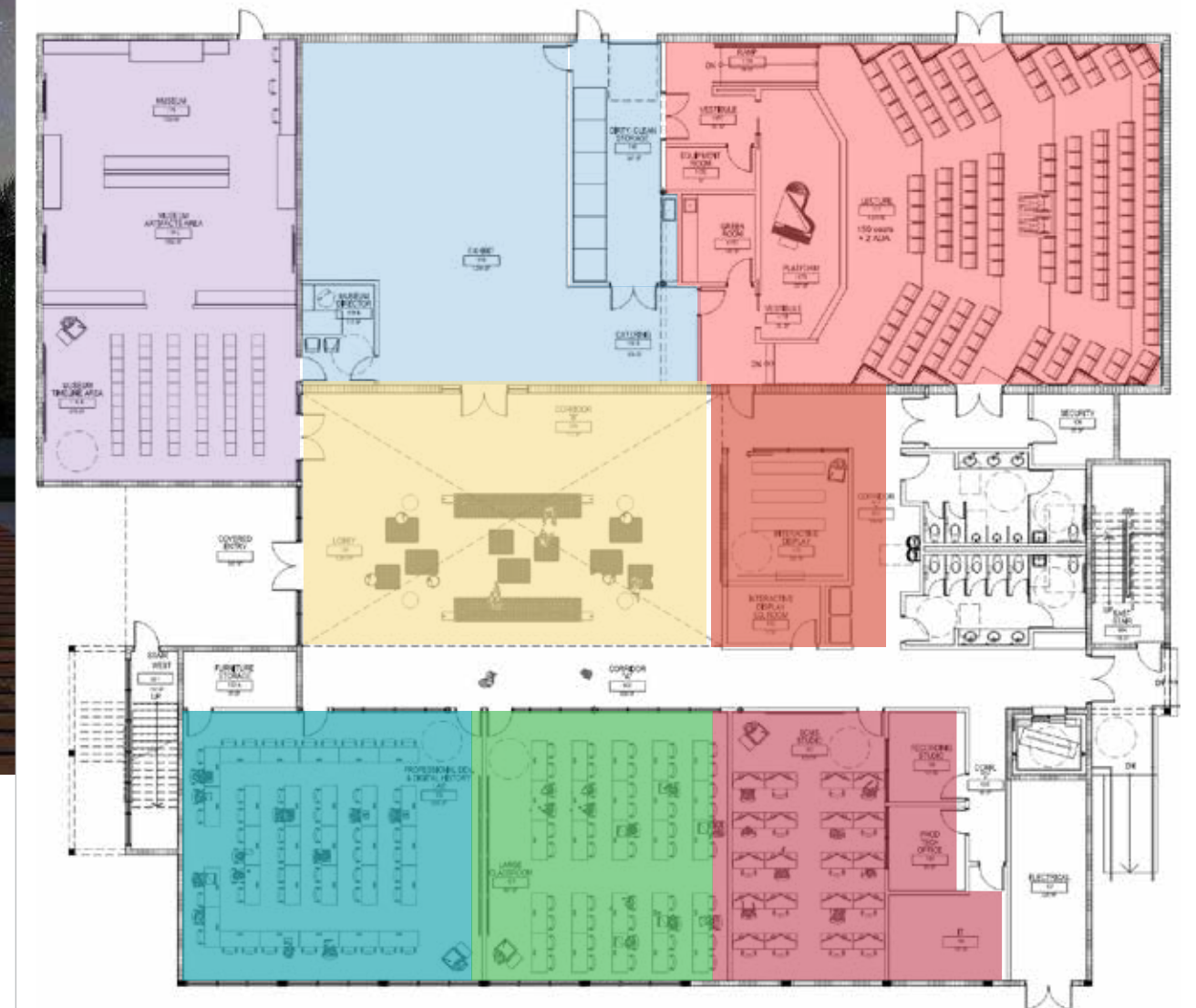
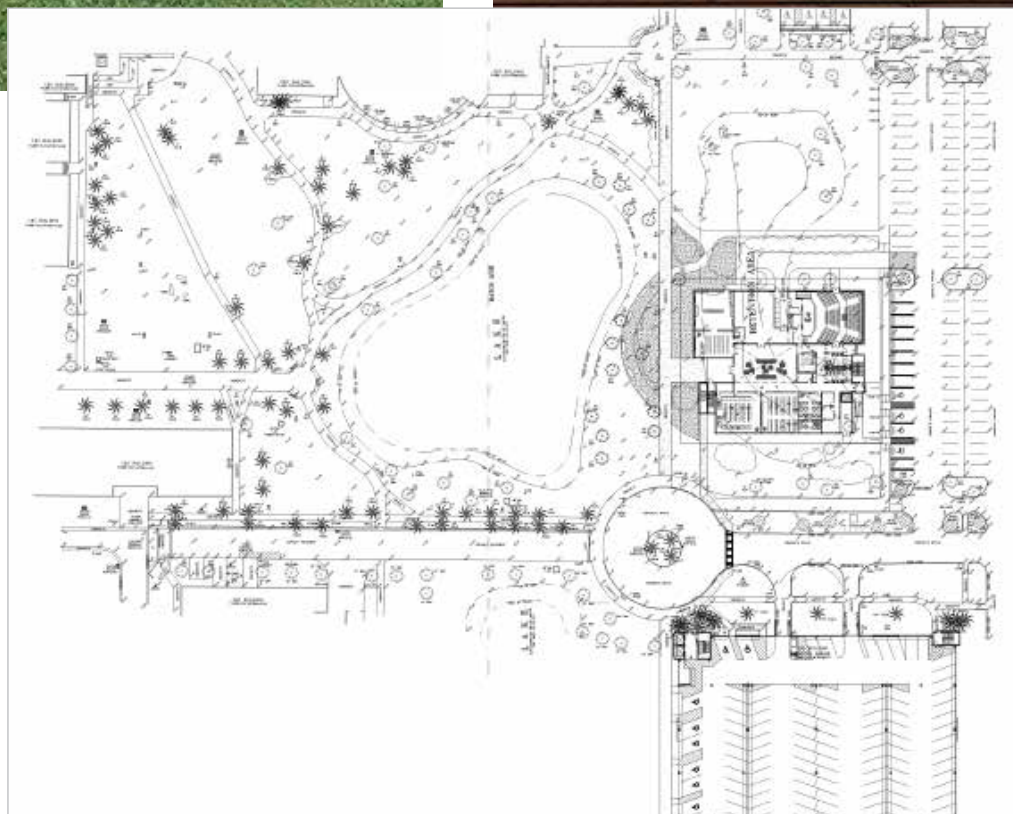




## LOWER LEVEL BUILDING DESIGN



The beautifully designed outdoor Marta and Jim Batmasian Memorial Pavilion is a serene and easily accessible lakeside location adjacent to the building to re-energize or enjoy quiet reflection. It is an ideal site for outdoor receptions or a gathering site.



- Weiner Holocaust Museum
- Exhibition Hall
- Recital and Lecture Hall
- Weinberg Grand Lobby
- Dimensions and Testimonial
- Professional Development Training Room
- Large Classroom
- Student Multimedia Studio



## PREMIER SHARED SPACES

### CRAIG AND BARBARA WEINER HOLOCAUST MUSEUM OF SOUTH FLORIDA AT FLORIDA ATLANTIC UNIVERSITY

The Craig and Barbara Weiner Holocaust Museum will be a distinctive educational and cultural space within the Kurt and Marilyn Wallach Holocaust and Jewish Studies Building. This 2,000-square-foot museum will serve as the permanent home for historical Holocaust artifacts donated by the Weiners to educate students and the community about this horrible period of our history – the Holocaust. Artifacts and their stories educate firsthand what is derived from hate, intolerance and antisemitism.

An educational outreach program for middle and high school students created by the Weiners will strengthen the outreach of the Gutterman Family Center for Holocaust and Human Rights Education, bringing thousands of students to the museum each year. The program encourages students to have the courage to follow their moral conscience when witnessing situations they know are wrong, including bullying, which is often the result of hate and intolerance.

A museum director will be hired to oversee the Weiner Museum as well as the middle and high school outreach program (2 days/week), an enhancement to Florida Atlantic's current K-12 teacher professional development through the Gutterman Family Center for Holocaust and Human Rights Education. The director will assist in overseeing the Wallach Exhibition Hall.

Donations to the Weiner Holocaust Museum and the sponsorship of artifacts also will be available.



### GEORGE AND IRINA SCHAEFFER DIMENSIONS IN TESTIMONY

What would you ask a Holocaust survivor or other witnesses to genocide? Within the Kurt and Marilyn Wallach Holocaust and Jewish Studies Building, visitors will have that opportunity to speak directly with survivors. The George and Irina Schaeffer Dimensions in Testimony will enable visitors to ask questions of survivors, prompting real-time pre-recorded responses through intuitive intelligence. The Wallach Building will become one of only a few locations in all of Florida to feature the stirring exhibit that uses modern technology with the power of storytelling to share first-hand accounts of the Holocaust in perpetuity.

Dimensions in Testimony was developed through the USC Shoah Foundation, and it includes thousands of hours of recorded accounts from hundreds of participants. Dimensions in Testimony displays survivors' first-hand accounts in a way that preserves their history and makes interactive dialogue possible between Holocaust survivors and visitors in perpetuity. Along with Jewish Holocaust survivors, participants have included U.S. and Red Army liberators, a Nuremberg prosecutor, and a Nanjing Massacre survivor.



*Museum artifacts include men's concentration camp uniform; women's clogs from concentration camp; yellow star worn by French Jews.*





## PREMIER SHARED SPACES

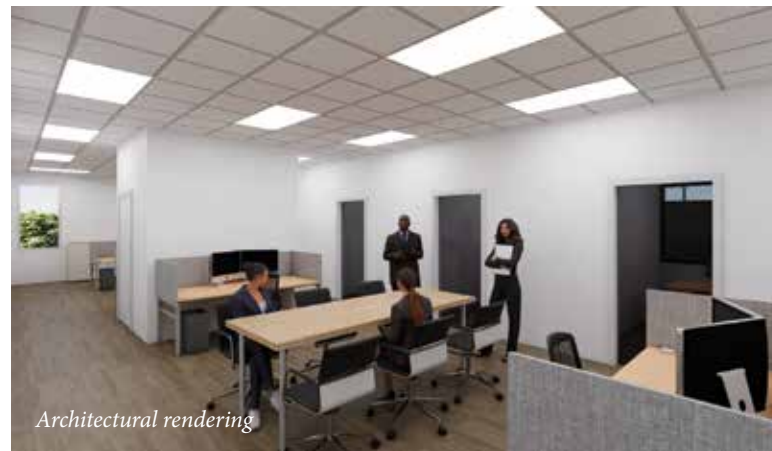
### SIGNATURE RECITAL/LECTURE HALL

The Kurt and Marilyn Wallach Holocaust and Jewish Studies Building will be a significant site for programs that celebrate cultures and traditions. It will host meaningful public conversations and lifelong learning for people of all ages and backgrounds.

The 2,700-square-foot state-of-the-art recital and lecture hall will be a premiere space within the Wallach building for music performances, public lectures, film screenings, literary talks, cultural events, and more. The hall also offers the Department of Music a valuable space for end-of-semester student recitals or other intimate concerts.

This distinctive 150-seat hall with comfortable seating will also be used for teaching and welcoming speakers from all disciplines within the Wallach building, across the university or from community organizations. Adaptable presentation options, acoustical treatments, and smart technologies will maximize its use as an extraordinary, first-class venue to enrich public offerings and enhance the diversity of programming in this multi-use, versatile hall, attracting tourists, visitors, and community residents to the Wallach building.

Prominently located off the Marilyn and Jay Weinberg Grand Lobby, the hall provides an extraordinary space to entertain patrons at receptions or other special activities in a grand, welcoming space following signature programs presented in the hall.



## TRAVELING EXHIBITION HALL

A significant exhibition space within the Kurt and Marilyn Wallach Holocaust and Jewish Studies Building will be a distinctive state-of-the-art traveling exhibition hall. This exceptional and secure 1,950-square-foot gallery space will host traveling exhibits from the United States Holocaust Memorial Museum, Yad Vashem – the World Holocaust Remembrance Center, and other notable locations.

Exhibits will reflect themes related to the Holocaust and Jewish Studies, and programs related to peace, nonviolence and diplomacy, and serve as an epicenter for intercultural dialogue and education to constituents of all ages.

Prominently located off the Marilyn and Jay Weinberg Grand Lobby, this extraordinary exhibition hall will be an inclusive location for diverse programs throughout the year. Smart technologies will enhance presentations and patrons' experiences. The space will also be available for receptions, intimate dinners, and other special activities.





## INVEST IN *excellence*

The Kurt and Marilyn Wallach Holocaust and Jewish Studies Building will serve as a South Florida destination and the epicenter for Holocaust and Jewish Studies, human rights education, and leadership training.

It will also memorialize the six million Jews and other innocent victims of the Holocaust, honor its survivors, and bring together educational programs that champion respect, compassion and understanding.



## LEGACY AND NAMING OPPORTUNITIES

The Kurt and Marilyn Wallach Holocaust and Jewish Studies Building will have a distinctive home on Florida Atlantic University's Boca Raton campus. Your name — or the name of someone you wish to honor — can be attached to any of the available spaces, vital personnel or programs.

### PREMIERE SHARED SPACES

#### Signature Recital/Lecture Hall: \$2,000,000

Premiere, state-of-the-art 2,700 sf\* instruction hall with the capacity to seat 150 for teaching, music performances, and welcoming speakers from all disciplines within the Wallach building, across the university or community organizations. A distinctive hall with comfortable seating, adaptable presentation options, acoustical treatments, and smart technologies to maximize its use to include film screenings, virtual presentations and more.

#### Traveling Exhibition Hall: \$1,000,000

An exceptional and secure 1,950 sf\* gallery space for traveling exhibits from the United States Holocaust Memorial Museum, Yad Vashem — the World Holocaust Remembrance Center and other prominent organizations, offering an inclusive location for diverse programs throughout the year. Smart technologies will enhance presentations and patrons' experiences. A small kitchen space will accommodate receptions and other gatherings.

#### Grand Lobby: NAMED

First impression space for the building, serving as the main connector to all programs, offices, the recital/lecture hall, exhibition and training spaces. This magnificent site will serve as the heart of the Wallach building and a wonderful location to host special receptions and gatherings.

#### Outdoor Memorial Pavilion: NAMED

A high-visibility and featured focal point of the Wallach building exterior. This beautifully designed outdoor pavilion is a serene and easily accessible location to re-energize or enjoy quiet reflection. A perfect site for outdoor receptions or a gathering site.

#### Professional Development Training Room and Digital History Lab: \$500,000

Distinctive 58-seat, state-of-the-art 1,250 sf\* classroom for university classes and K-12 teacher workshops presented by the Gutterman Family Center for Holocaust and Human Rights Education, the Leon Charney Diplomacy Program, and the Department of History. Dynamic learning space with videoconference capabilities, digital and traditional white boards, and teaching enhancements to foster an environment conducive to teaching and learning in various ways.

#### Jerusalem Stone Façade with Menorah Lighting: \$450,000

Prominent exterior façade of the Wallach building comprised of Jerusalem stone, the natural stone of Israel. The stone is a symbol of strength, endurance and eternal devotion. This unique stone carries the essence of the Holy Land, connecting believers to their faith, and the sacred stories that have shaped history.

#### Large Classroom: \$400,000

Distinctive 40-seat, state-of-the-art 1,000 sf\* classroom for university classes and other program use. Dynamic learning space with videoconference capabilities, digital and traditional white boards and teaching enhancements to foster an environment conducive to teaching and learning in various ways.

#### Student Multimedia Studio: \$500,000

A state-of-the-art 1,000 sf\* production site will enrich students' experiential learning with the production of short films and by producing social media video content to battle misinformation that ignites intolerance, antisemitism and racism. It will house equipment and technology to record individual testimonials for a digital history archive and more.

#### Conference Seminar Room: \$200,000

Premiere 525 sf\* state-of-the-art second floor conference room. Smart room technologies provide for a more collaborative experience for remote and in-person learning. Crisp audio, HD video, smart lighting, and internet advancements enhance board meetings and conferences and offer multiple use opportunities with the latest technologies.

#### Wall of Recognition and Remembrance: NAMED

Prominent donor recognition and remembrance digital display in the Grand Lobby of the Kurt and Marilyn Wallach Holocaust and Jewish Studies Building. Opportunity to acknowledge a broad level of altruistic supporters and educate against hate, antisemitism and indifference. Digital wall will also display public programming within the building.

#### Student Study Space: \$300,000

Second floor 725 sf\* collaborative or individual spaces designed to maximize its use for diverse study habits.

#### Tree of Life Entrance: NAMED

Prominent main entrance with a distinctive Tree of Life design element leading into the Wallach building's first floor.

#### East Entrance: \$100,000

High visibility site located on the east side of the Wallach building. This outdoor space is designed to be a welcoming and decorative entryway to the building, with aesthetically pleasing security features.

#### Meeting Room: \$75,000

Intimate second floor 200 sf\* "huddle" room for small meetings and gatherings.

### PROMINENT NAMING OPPORTUNITIES

#### Weiner Holocaust Museum Director: NAMED

Endowment opportunity to fund the Director position for the Craig and Barbara Weiner Holocaust Museum. Annual spending will cover the salary and benefits of the key personnel who will direct programing and oversee operations within the museum.

#### Dimensions and Testimony: NAMED

State-of-the-art digital display enabling visitors to have virtual conversations with Holocaust survivors and other witnesses to genocide.

#### Recital Hall Grand Piano: \$125,000

Elegant 7-ft Bosendorfer baby grand piano with high calibre sound quality and aesthetic appeal for the Recital/Lecture Hall.

*Florida Atlantic University Foundation, Inc., is a not-for-profit 501(c)(3) corporation, in support of Florida Atlantic University. Your gift is tax deductible as defined by the law. Consult with your tax advisor for deductibility of your charitable gift.*

*\*Estimated, subject to final design*







PROGRAM OFFICE SUITES

Holocaust, Jewish Studies and Peace, Justice and Human Rights Administrative Office Suite: \$750,000

Deluxe 3,500 sf\* office suite for all program areas within the Wallach Building. Strategically designed to serve as a hub of collaboration and connectivity among all directors, faculty and staff housed within this area.

The Arthur and Emalie Guttermann Family Center for Holocaust and Human Rights Education

The Center provides age-appropriate education on the Holocaust and other genocides to more than 500 K-12 teachers as well as 350 Florida Atlantic University students annually through professional development workshops, the Holocaust Summer Institute, intensive-study opportunities and community programs.

- ▶ Director’s Office: \$50,000
- ▶ Assistant Director’s Office: \$25,000

Holocaust and Jewish Studies

The academic programming providing a comprehensive curriculum to promote knowledge and the understanding of the Holocaust, Jewish history, religion and culture, as well as contributions to other cultures.

- ▶ The Raddock Eminent Scholar in Holocaust Studies’ Office: \$50,000
- ▶ The Gimelstob Eminent Scholar in Jewish Studies’ Office: \$50,000
- ▶ Additional Faculty Offices (2): \$25,000 each

Center for Peace, Justice and Human Rights

A university-wide effort established in 2014 designed to bring together scholars, practitioners, students and community leaders to expand the reach and influence of existing peace, justice and human rights programs.

- ▶ PJHR Executive Director’s Office: \$50,000
- ▶ Leon Charney Diplomacy Director’s Office: \$50,000
- ▶ Future Program Office: \$50,000
- ▶ Assistant PJHR Director’s Office: \$25,000
- ▶ Visiting Scholar Office: \$25,000

PROGRAM AND BUILDING EXCELLENCE ENDOWMENT

Barry and Silvana Halperin Wall of Recognition and Remembrance

Prominent donor recognition with the opportunity to honor a survivor, family member, special individual or an organization. Gifts will establish an endowment to fund programs, student scholarships and fellowships, faculty and building care.

A digital display located in the lobby of the Kurt and Marilyn Wallach Holocaust and Jewish Studies Building will feature individual donors with personalization opportunities as gift level increases. Opportunity to include survivor testimonials.

NAME	GIFT LEVELS
Benevolence	\$ 1,000,000+
Altruism	\$ 750,000+
Nobility	\$ 500,000+
Vision	\$ 250,000+
Wisdom	\$ 150,000+
Leadership	\$ 100,000+
Inspiration	\$ 50,000+
Remembrance	\$ 25,000+
Reflections	\$ 10,000+

Florida Atlantic University Foundation, Inc., is a not-for-profit 501(c)(3) corporation, in support of Florida Atlantic University. Your gift is tax deductible as defined by the law. Consult with your tax advisor for deductibility of your charitable gift.

\*Estimated, subject to final design





UPPER LEVEL BUILDING DESIGN



Architectural rendering



Architectural rendering



Architectural rendering





FLORIDA ATLANTIC UNIVERSITY  

---

Foundation, Inc.



Architectural rendering



Architectural rendering

**DOROTHY F. SCHMIDT**  
**COLLEGE OF ARTS AND LETTERS**  
Florida Atlantic University  
777 Glades Road  
Boca Raton, FL 33431

**CONTACT:**

**Michael J. Horswell**  
Dean  
561.297.3803  
horswell@fau.edu

**Laurie Carney**  
Senior Director of  
Development and Outreach  
561.297.3606  
lcarney@fau.edu

**[fau.edu/wallach-building](https://fau.edu/wallach-building)**