

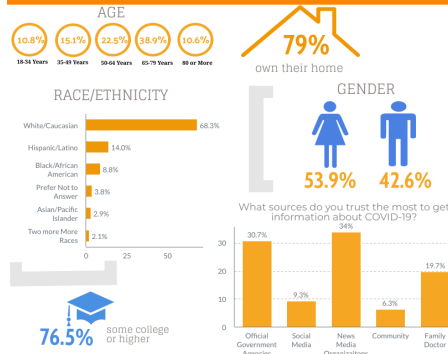
# COVID-19 IMPLICATIONS FOR HURRICANE PRONE AREAS

## FLORIDA SURVEY

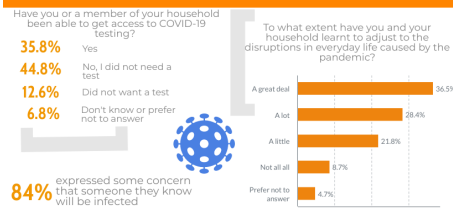
Results for Survey 1 - July 1-23, 2020



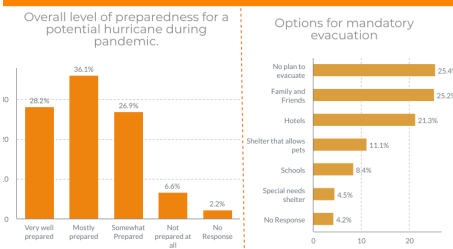
### DEMOGRAPHIC PROFILE



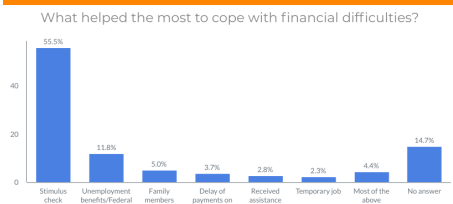
### COVID-19



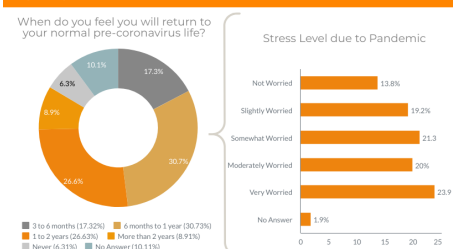
### EMERGENCY MANAGEMENT



### COPING WITH FINANCIAL DIFFICULTIES



### RESILIENCE



This data are unweighted. This work is based on research supported by a grant from the U.S. National Science Foundation (SES # 2028966). The findings are not necessarily endorsed by the NSF. Any opinions, findings, and conclusions or recommendations expressed in this material are those of the authors and do not necessarily reflect the views of the National Science Foundation.