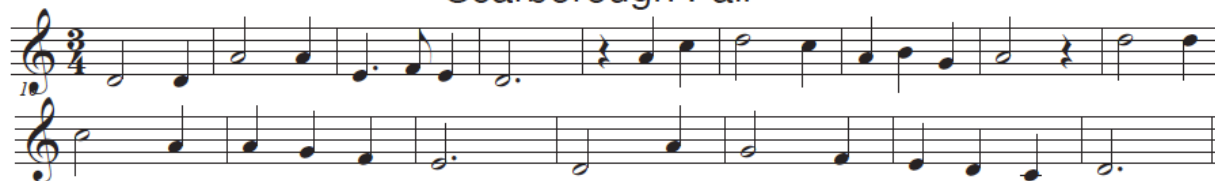


- 1) Complete the Audition Information Form online: <https://forms.gle/74naMwus28j2Z6QY6>
- 2) Prepare the following excerpts to the best of your ability, following indicated tempos and styles
- 3) You may also perform a single selection of your choice, not to exceed two (2) minutes.
- 4) Perform the folk song 'Scarborough Fair', in any key or register. *Personalize* the music through your choices of tempo, phrasing, dynamics, articulation, and nuance.

Scarborough Fair



OBOE

Grainger: Colonial Song

21 IN TIME, BUT SOMEWHAT WAYWARD ♩ = about 58 SLACKEN STILL MORE **29** IN TIME, SLIGHTLY FASTER THAN 1st SPEED (♩ = about 63)

6 short *f* very feelingly *louden*

31 **32** **33** **34**

IN TIME, SOMEWHAT SLOWER THAN LAST SPEED, VERY SLIGHTLY FASTER THAN 1st SPEED (♩ = about 60)

36 SLOW OFF LOTS *louden* *ff* *fff* passionately

38 **39** **40** **41** **42**

SOMEWHAT SLOWER (♩ = about 44) *louden* *fff*

47 *mp* *ff*

Holst: Jupiter from The Planets

Quarter note= 116

239



pp *mp*

248



254



p *cresc.*

259 **Maestoso**



fff

264



p *cresc.*

English Horn

Carmen Suite No. 1, Intermezzo

Cor. ingl.
Andantino quasi Allegretto.
(♩ = 88.)

FL. I. **FL. II.** **Solo**

2 **3** **4** **8** **A** **8** **9** **10**

pp *p ma ben marc.* *f* *cresc.* *ff* *dim.* *p marc.* *ppp* *smorz.*

