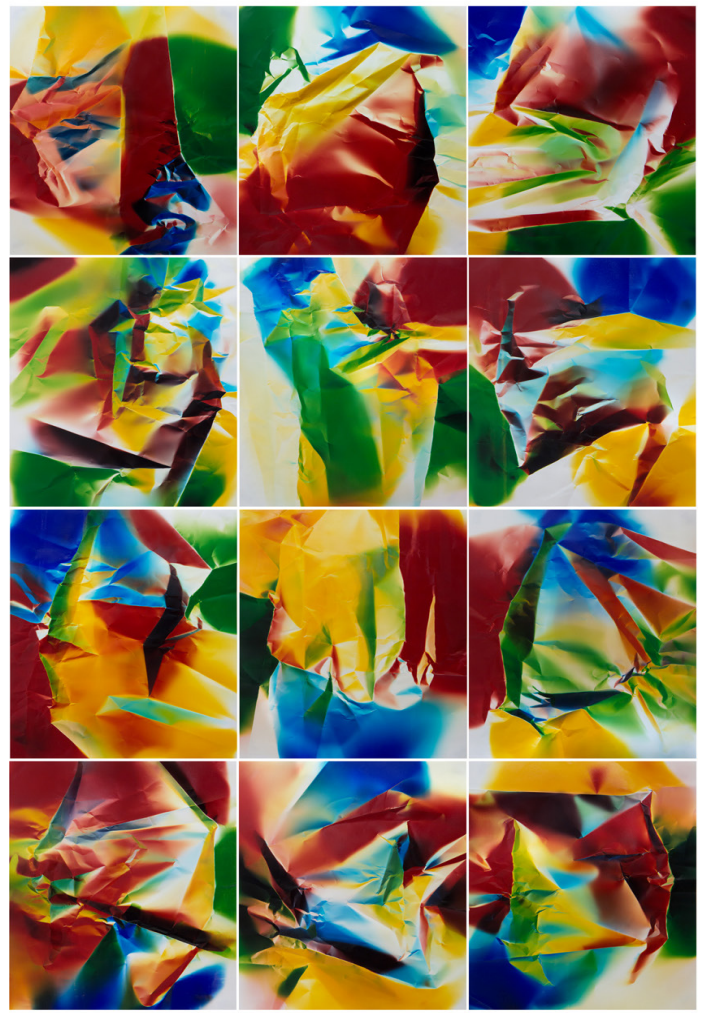


altarations

BUILT BLENDED PROCESSED

Photo-based works by 23 Contemporary Artists



John Mann, *Untitled (From Drift series)*, 2013 pigment prints, 50 x 40 inches, Courtesy of the artist and Daniel Cooney Fine Art, New York ; Ellen Carey, *Dings and Shadows: Multicolor*, 2014 color photograms-unique 12 prints 24"H x 20"W each, 8'ft. H x 5' Ft.W , Collection of the artist and courtesy of Jayne H. Baum Gallery, New York, NY

Noon Time Artist Talks

Ellen Carey

Artist in *Altarations*

Associate Professor of Photography at the
Hartford Art School, University of Hartford

Wednesday, January 14
12pm, VA 105

John Mann

Artist in *Altarations*

Associate Professor of Photography at
Florida State University

Thursday, January 15
12pm, VA 105

Altarations: Built, Blended, Processed
Schmidt Center Gallery through Feb 28, 2015
Ritter Art Gallery Jan 16 – Feb 28, 2015

Exhibition Co-Curators

W. Rod Faulds & Jeanie Ambrosio

*If accommodation(s) for a disability is required, please contact
Rod Faulds at 561-297-2661 or TTY 1-800-955-8770, a minimum
of five (5) working days in advance of the date of the event.*

*The University Galleries exhibition and education programs are supported in
part by the Cultural Council of Palm Beach County; the R.A. Ritter Foundation;
Beatrice Cummings Mayer and individual contributors. Museum Education
programs are made possible by the Kaye Endowment for Arts Integration.*

FAU



Palm Beach County Florida
THE BEST OF EVERYTHING®
A TOURIST DEVELOPMENT COUNCIL FUNDED PROJECT

University Galleries

School of the Arts

Dorothy F. Schmidt

College of Arts & Letters

Florida Atlantic University, Boca Raton

www.fau.edu/galleries | 561.297.2661