

FAU Wireless Configuration for Windows Vista

Note: These instructions are for configuring wireless connections with Windows configuration utility only. Other wireless configuration utilities that may be included with laptops are not supported in this document.

Note: Make sure wireless networking is active. Many laptops have a switch on the side of the computer that turns wireless functionality On or Off.

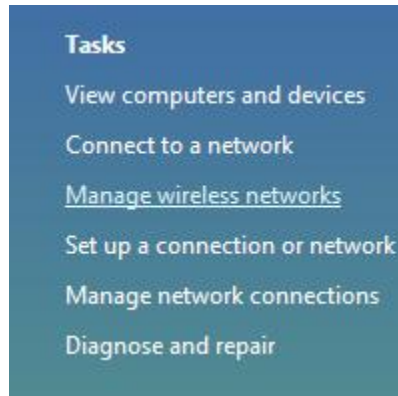
Step 1

- Right-click on the Network Connections icon located in the System Tray.
This is the area at the bottom, right corner of your desktop next to the clock.
- Menu will appear.
- Select "Network and Sharing Center."



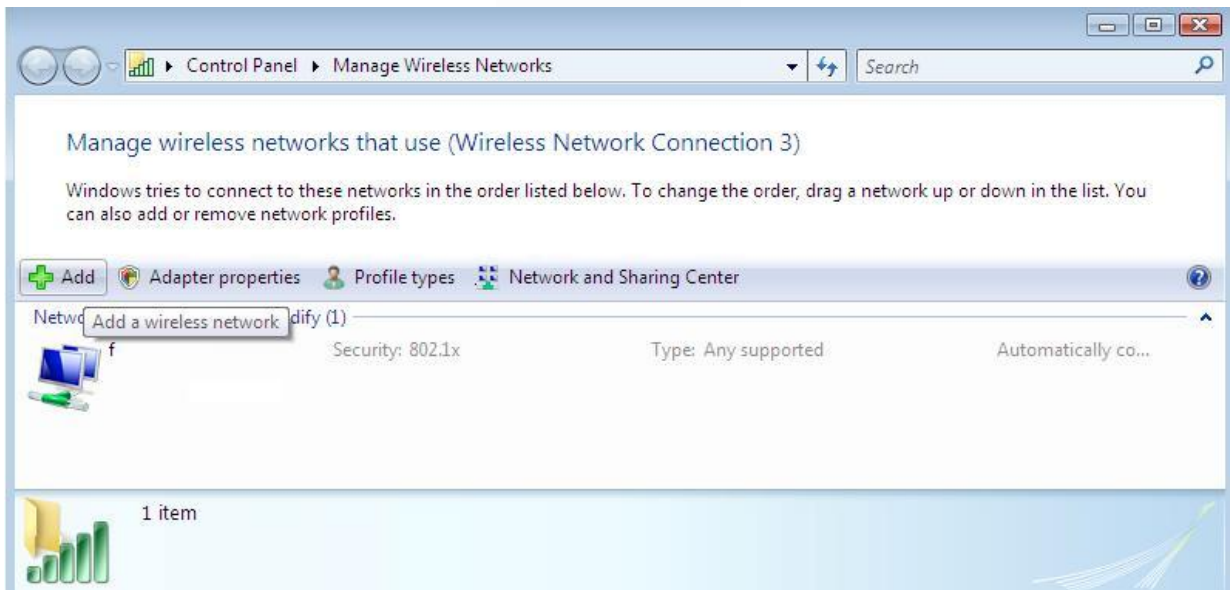
Step 2

- Select "Manage Wireless Networks."



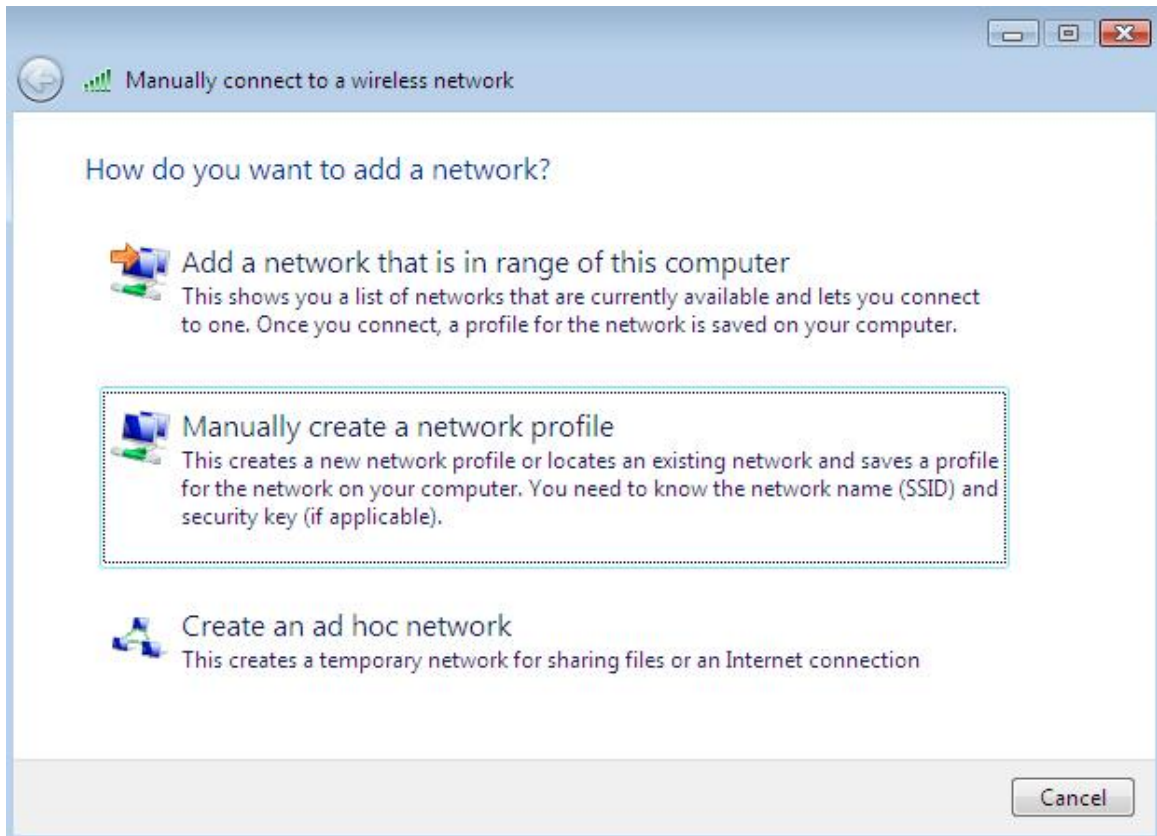
Step 3

- Select "Add" button in the Manage Wireless Networks window.



Step 4

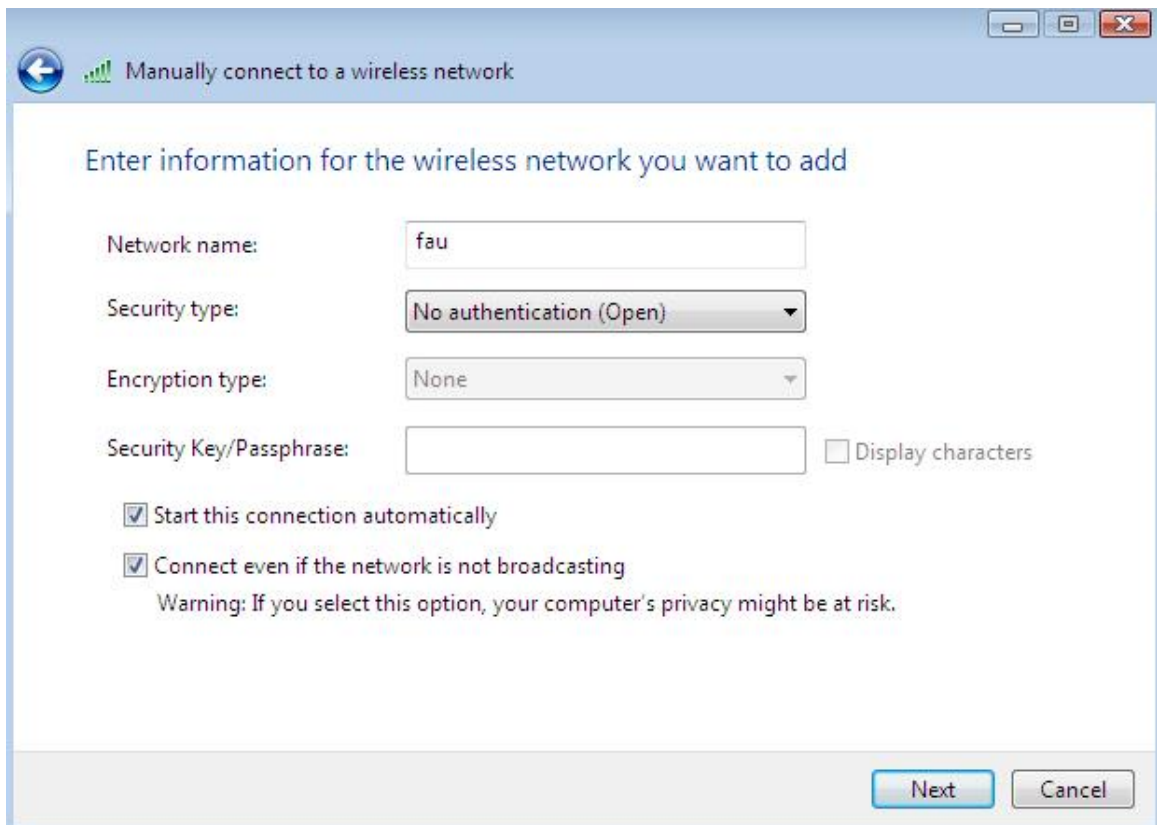
- Select “Manually create a network profile.”



Step 5

Manually Connect to a Wireless Network window:

- Network name: **fau** (MUST BE IN LOWERCASE)
- Security type: **No Authentication (Open)**
- Start this connection automatically: **Checked**
- Connect even if the network is not broadcasting: **Checked**



Manually connect to a wireless network

Enter information for the wireless network you want to add

Network name:

Security type:

Encryption type:

Security Key/Passphrase: Display characters

Start this connection automatically

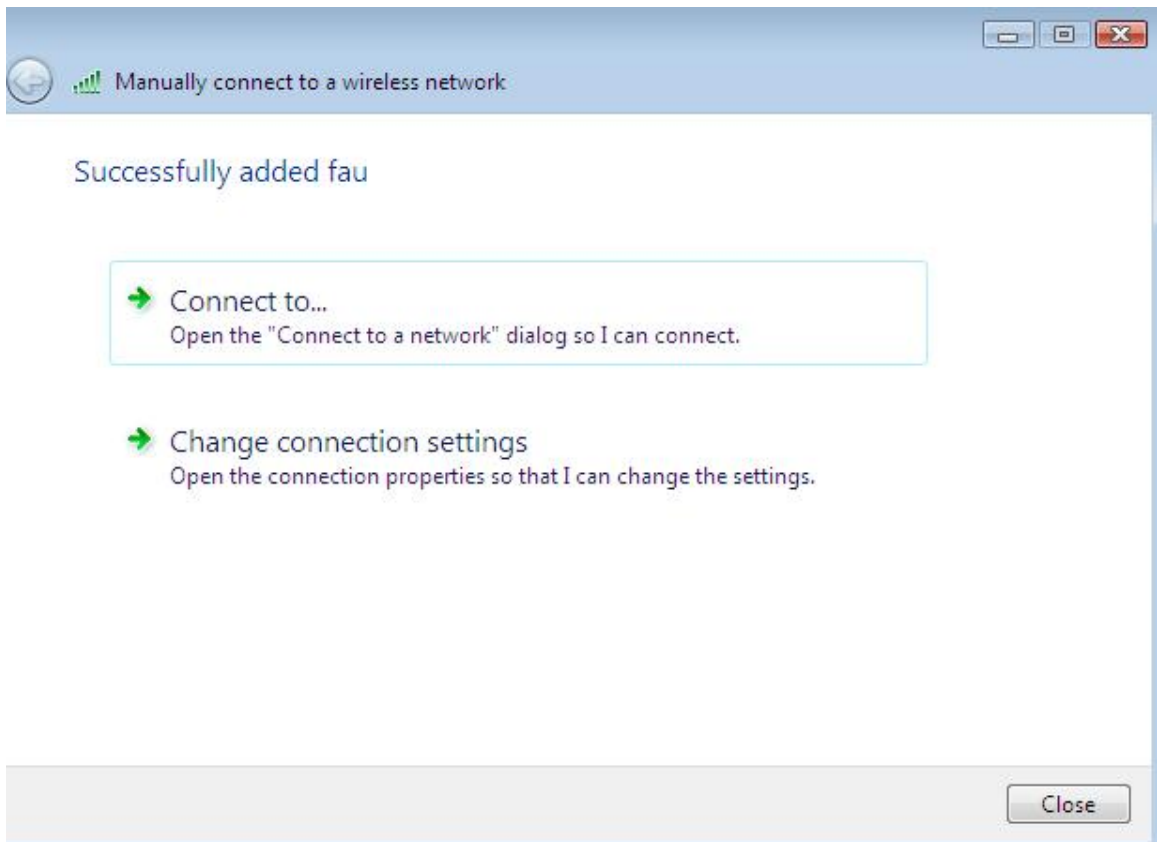
Connect even if the network is not broadcasting

Warning: If you select this option, your computer's privacy might be at risk.

Next Cancel

Step 6

- Select "Close."



- Note the connection icon in the System Tray (lower right corner).

The icon should change from having a red "X" (no connection exists) to a yellow triangle with exclamation point (limited connection icon), computer only icon (partial connection exists).



Step 7

- Open a web browser such as Internet Explorer or FireFox at this time.
- Login prompt will present. Login with your FAU network username and password.

If you are experiencing difficulties in setting up your device, you may visit following locations to have your device configured:

- Boca Raton – CM 22, 138
- Davie – LA 49, 303E
- Fort Lauderdale – HE 05, 611 or 810
- Jupiter – SR 03, 284
- Port St. Lucie – CO 02, 223 or MP 06, 222