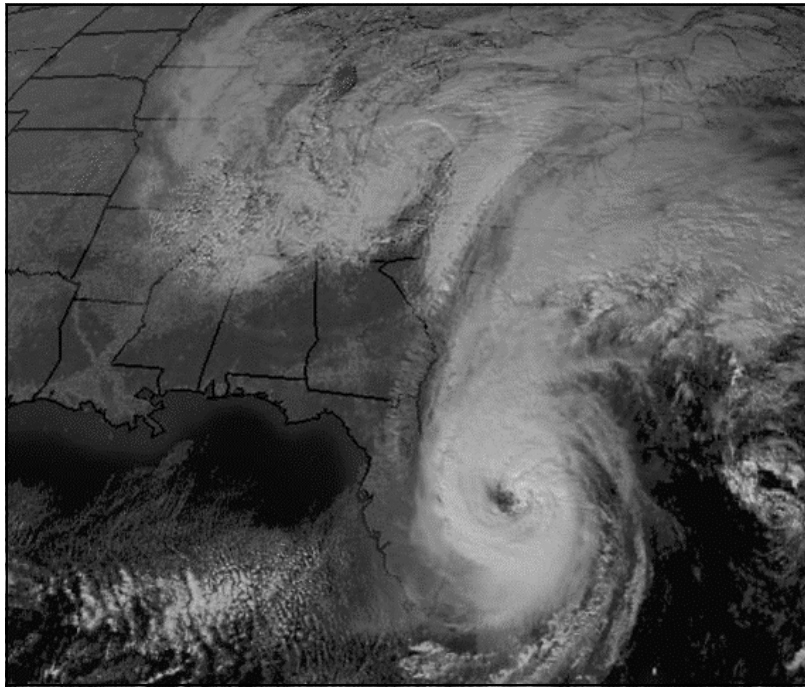




**Department of Housing
and Residential Life**



Hurricane Wilma regional imagery, 2005

HURRICANE GUIDE 2009-2010

WATCHES AND WARNINGS

A **WATCH** means that tropical storm or hurricane conditions are a possible threat within 36 hours in the specified region. You should begin preliminary preparations to protect your life and your property. A **WARNING** means that tropical storm or hurricane conditions are expected in a specified region within 24 hours. All of your preparations should be complete.

DURING A HURRICANE WATCH

Take a look around your room and suite or apartment. A number of things can be done to prepare, in the event you are asked to evacuate.

- All furniture, including beds, should be pulled away from the windows. Computers, TVs, stereo equipment, etc., should be raised off the floor, preferably in a closet or the study area.
- All articles on the floor (shoes, rugs, clothes, boxes, suitcases, etc.) should be placed on closet shelves or in dresser drawers.
- All loose objects should be placed in drawers or closets. Paper, books, etc., should not be left on top of dressers or desks.
- All windows must be in the closed and locked position. In facilities where blinds are provided, the blinds should be in the raised position (mini blinds) or completely open (vertical blinds). All curtains should be closed.
- **Do not tape window glass!**
- Any resident who owns a vehicle should have the gas tank filled.
- If you do not plan to use your vehicle for evacuation purposes, you should place your vehicle in your assigned parking area with the emergency brake set and in reverse gear or park. Ideally, you'll want to park them in a parking garage if available. All windows should be closed and the vehicle locked. *Vehicles parked near buildings and not in an approved parking area (i.e., motorcycles in bicycle racks, cars in loading zones) will be removed or towed at owner's expense.*
- Bicycles should be brought in from the outside and stored in your bedroom.
- Motorcycles, mopeds, and any other vehicle containing combustible fuel may NOT be stored in or near University Housing. Alternate locations need to be found (BY YOU) to store motorcycles and mopeds.
- Disconnect all unneeded appliances. But, leave your refrigerators plugged in and turned on coldest settings.
- Unplug computers and other electronics. Also, unplug the Ethernet cord when unplugging your computer.

DURING A HURRICANE WARNING

In the event a hurricane warning is issued, **FAU may evacuate the campus**. Please inform your RA or the Area Office where you are going (e.g., home, friends, etc). If that decision is made, be prepared to leave your on-campus residence. **BE SURE TO LOCK ALL DOORS WHEN YOU LEAVE!** *Additionally, turn off all water faucets, showers, etc.* For security purposes, the locks to all exterior entrances will be changed. Residents may not re-enter University buildings until the University officially announces that University Housing is ready to re-open.

AFTER THE HURRICANE

Stay tuned to TV or radio broadcasts for the re-opening of the University campuses, call the FAU Hotline telephone number for your specific campus information, or check <http://www.fau.edu> and click on HOUSING.

HURRICANE SHELTERS

Do not report to a Red Cross shelter until it is officially opened. The University and all local media will announce shelter openings. Pets, firearms, alcoholic beverages, and other illegal substances are not allowed in Red Cross shelters.

Transportation to local Red Cross designated shelters may be provided. Specific pick-up locations will be announced on posters and flyers found throughout University Housing.

Be advised: Shelters will be crowded and uncomfortable with no privacy. Residents who need to go to local shelters are encouraged by the Red Cross to bring the following items:

Bedding including pillows, blankets	Folding beach chair (to use as a bed)
Prescription medications	Single servings of food (granola/cereal bars, etc.)
Extra set of clothing, toiletries	Canned foods & manual can opener
Flashlight/batteries	Books, games
First aid kit	Drinking water
Cash, traveler's checks	24-hour supply of non-perishable food
Valuable documents	Books, study materials
Photo Identification (driver's license, student I.D. card, etc.)	

Be sure to pack lightly! YOU will have to carry all items you bring. In addition, security of your items is up to you! Remember, hurricane shelters should be utilized as a LAST RESORT. Residents are encouraged to stay with family or friends when possible.

Palm Beach County Red Cross Shelter website:

<http://www.redcross-pbc.org>

PLAN AHEAD

Do not wait until the last minute to purchase supplies. Past experience shows that once a Hurricane Watch is announced, many supplies are depleted and store checkout lines can take several hours.

Each resident should stock up on battery-powered lighting (flashlights) and will be asked to provide a flashlight in case of power failure. **DO NOT** use candles or other flame-type lighting under any circumstances, as fire is uncontrollable during a hurricane. Use battery powered lighting only! Additionally, you'll want to have extra batteries, water, food, and cash available in case of a hurricane.

If you can leave the campus for home (or a friend or relative's home) you are encouraged to plan to do so. Plan in advance where you will stay, how you will get there, and supplies you will need to take. The University may provide transportation to and from Red Cross shelters, if the need arises.

If you need special transportation arrangements to be made, due to a physical disability, **register with your RA.** Some assistance can be arranged for transportation! Don't wait until a storm approaches; make your contact now!

PRE-HURRICANE INFORMATION

Hurricane season runs each year from June 1 to November 30. It is important that all Housing residents stay informed about changing weather conditions. All residents are encouraged to stay alert to local television & radio announcements concerning the status of all storms.

Check for re-opening of **your campus**, via the following:

The official FAU Hurricane Hotlines are:

Toll-Free Hotline: **1-888-8FAUOWL (832-8695)**

For Boca Raton Campus Information: **(561) 297 – 2020**

For Jupiter Campus Information: **(561) 799 – 8020**

On the Internet, you can access general up-to-date information at the campus website: <http://www.fau.edu>. Then, follow links to appropriate hurricane sites. Or, you can locate specific hurricane tracking information at this website: <http://www.noaa.gov/stormwatch/>.

FAU STORM INFORMATION

Be aware of the FAU Hurricane Safety procedures. These procedures are available from the FAU Website at: <http://www.fau.edu>.

When a hurricane is approaching, throughout the storm and for a time afterward, the FAU homepage will include information about the University's status and procedures. If schedules are altered or closings are ordered, the page will include links for detailed information on housing, food services, athletics, classes and other areas.

Remember, visit <http://www.fau.edu> for the most current information in the event of a hurricane.

For updates on the status of University Housing, click on the **HOUSING** tab of the University's website.

In the event of a hurricane, the University may close, and all on-campus residents may need to evacuate University Housing.