



Monitoring Interactions in Therapeutic Relationships

Kirielle Singarajah

Kirielle Singarajah



Division of Research
Florida Atlantic University



1 in 4 adults in the US suffer from a
diagnosable mental illness

1 in 4 of those individuals seek out therapy
as a form of treatment

1 in 2 individuals do not return for a follow
up session

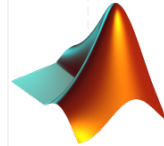


Data Analysis of the Therapist-Client Relationship

Visualizations to unveil, clarify and highlight patterns

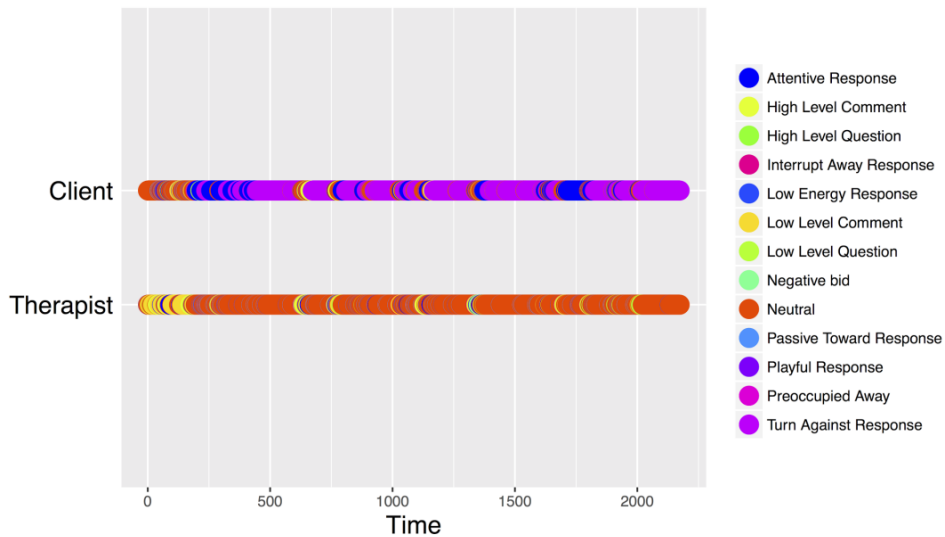
Cross-recurrence quantitative analysis (CRQA) to explore and mathematically assess recurrences within the therapist-client system

Automation to wrangle (process) data, generate visualizations, and run analytical processes

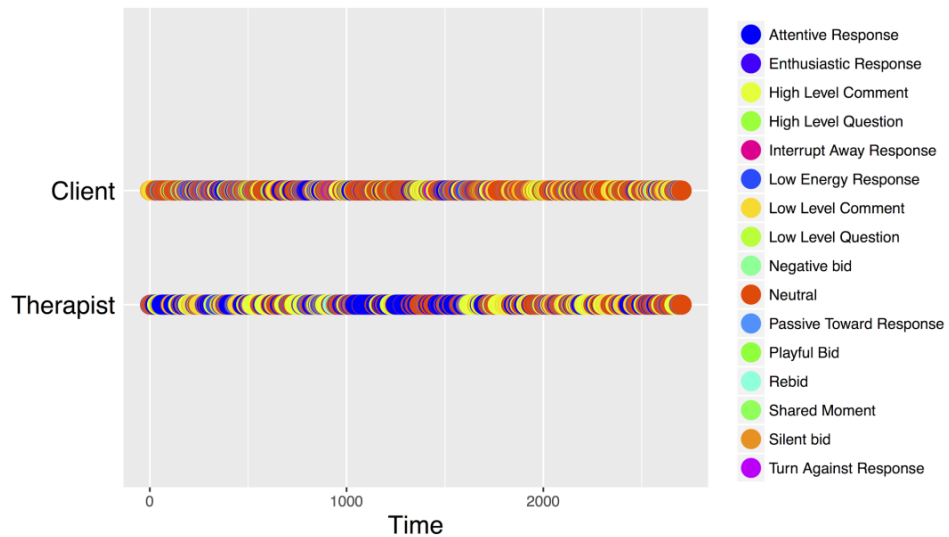


Visualization 1: Coupled Temporal

005A Full



Carlson 02 Full



Visualization 1: Coupled Temporal

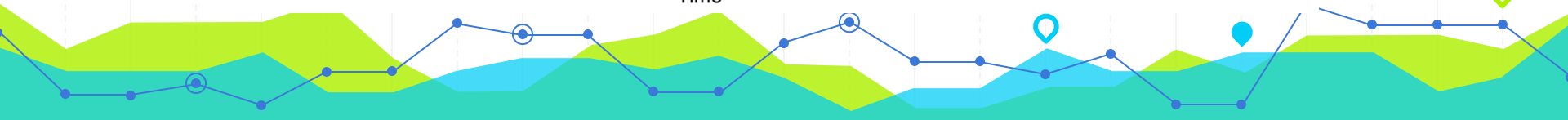
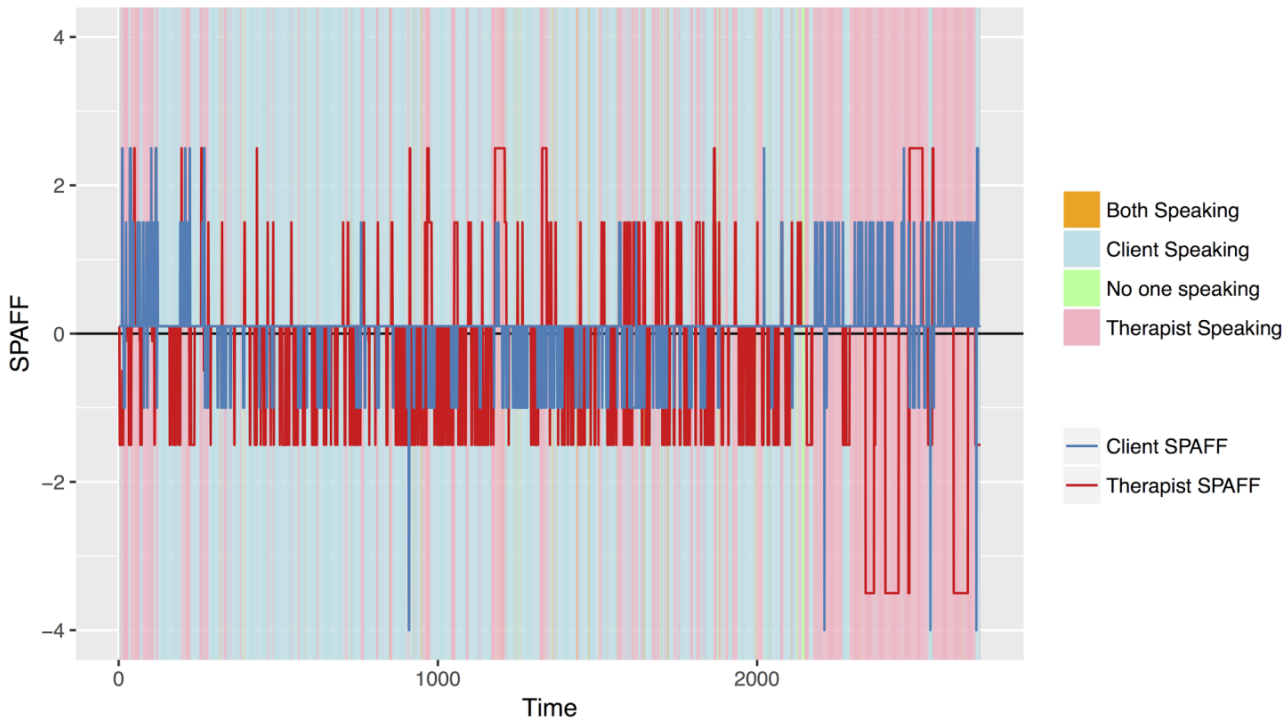
005A (1 of 5)

005A (5 of 5)

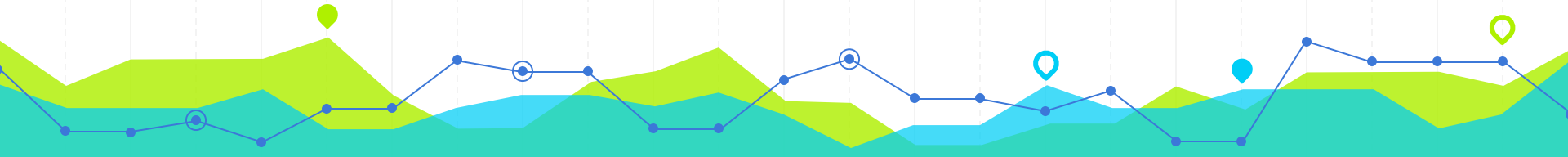
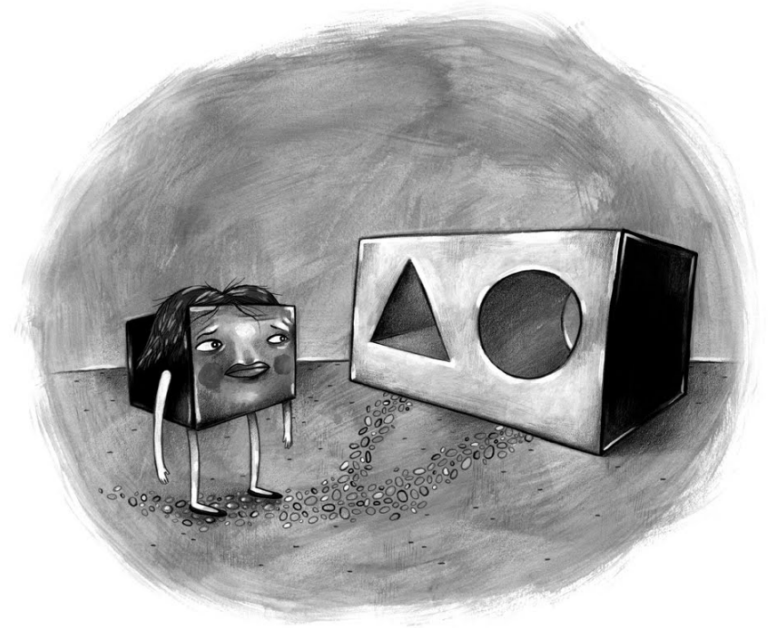
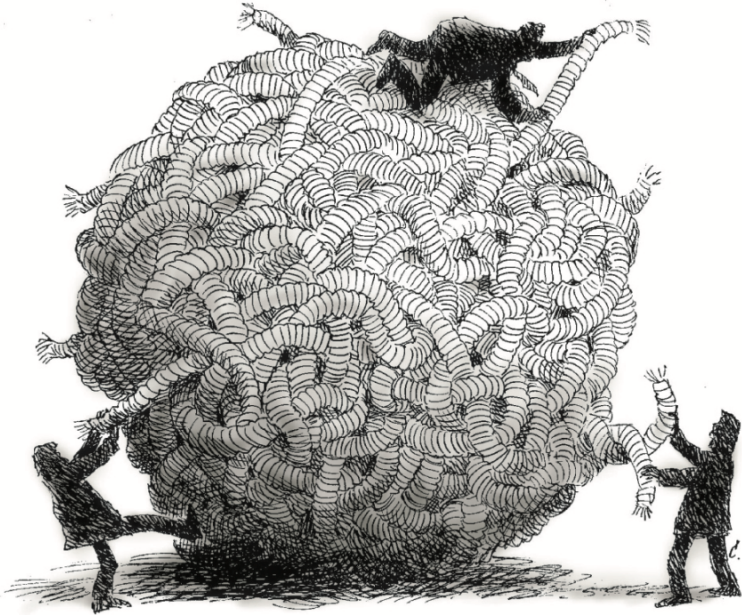


Visualization 2: Overlaid SPAFF + Who Is Talking?

SPAFF-Who Is Talking?: 062A Full



Challenges





Moving Forward

Breadth

- More datasets
- More variability
 - Other master therapists
 - Unique cases
- Categorical datasets

Depth

- Machine learning to automate coding of session
- Explore CRQA
 - Other programs
 - Tune or create programs specialized for our data



Thank you!

