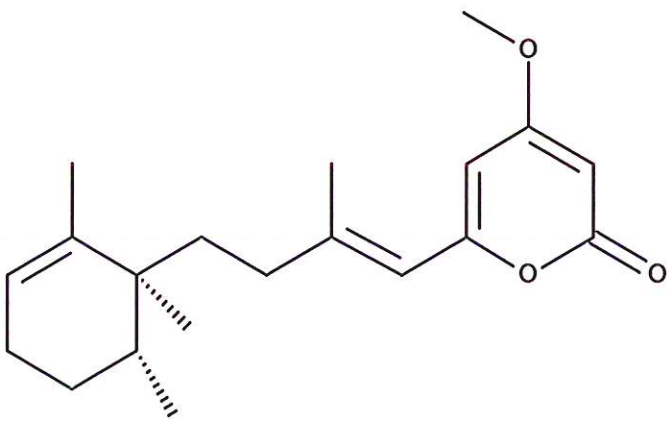


HBOI-384	
SOLASSIN D	
$C_{20}H_{28}O_3$	316.20
Pachastrellidae	
Killday, Longley, McCarthy, Pomponi, Wright, Neale, and Sills, 1993, <i>J. Nat. Prod.</i> , 56(4) 500-507	

isolation scheme (Visio) attached

hplc (trace attached)

Method: Vydac C18 Protein and Peptide, 4.6 x 250mm, 10 $\mu$   
 flow 1 ml/min, detection: PDA: UV (extracted at 220 nm, black); ELSD (green dotted)  
 A: H<sub>2</sub>O:CH<sub>3</sub>CN (95:5, v/v), B: CH<sub>3</sub>CN  
 t=0 min A:B (90:10,v/v), t=20 min (100%B) , t=28 min (100%B)

LC-MS (spectrum attached)

Method: Vydac C18 Protein and Peptide, 2.1x150 mm, flow 0.2 ml/min  
 A:H<sub>2</sub>O (0.1% formic acid), B:CH<sub>3</sub>CN (0.1% formic acid)  
 t= 0 min A:B (90:10, v/v), t=15 min (100%B), t=21 min (100%B), t=22.1 min A:B(90:10, v/v)  
 using a linear gradient

<sup>1</sup>H (600 MHz)       CDCl<sub>3</sub>       CD<sub>3</sub>OD (Methanol-d<sub>4</sub>)       CDCl<sub>3</sub>/CD<sub>3</sub>OD

<sup>13</sup>C (150 MHz)       CDCl<sub>3</sub>       CD<sub>3</sub>OD (Methanol-d<sub>4</sub>)       CDCl<sub>3</sub>/CD<sub>3</sub>OD

solubility       CHCl<sub>3</sub>/MeOH (9:1)       MeOH       DMSO

estimated purity >90%

sample weight 20.4 mg

For further information contact:

Amy E. Wright, PhD, HBOI@FAU, 5600 US 1, North, Fort Pierce, FL 34946  
[awrigh33@hboi.fau.edu](mailto:awrigh33@hboi.fau.edu), 772-242-2459

Date: 1/28/13

22-V-93-3-004  
Pachestrellidae  
Heptane Dionex Extraction  
ROBL22-99-2  
500mg

12g Redi-Sep Gold  
Combi-Flash Non-  
Polar Method  
100% HEP to 100%  
EtOAc plus wash  
gradient  
30 ml/min

ROBL25-52- Weight Tubes	1 67.1mg 5-11	2 20.3mg 12-14	3 91.6mg 15-18	4 32.1mg 19-23	5 12.9mg 24-40	6 15.5mg 41-43
			7 31.3mg 44-53	8 1.3mg 54-57	9 96.5mg 58-71	10 31.2mg 72-79

ROBL25-52-3  
HPLC 20:80 H<sub>2</sub>O/ACN  
50mg

ROBL25-62- mg	1 3.1	2 1.2	3 33.0	4 1.2
------------------	----------	----------	-----------	----------

ROBL25-52-4  
HPLC 20:80 H<sub>2</sub>O/ACN  
32mg

ROBL25-62- mg	5 5.3	6 21.0
------------------	----------	-----------

ROBL25-52-7 HB383  
ROBL25-52-9 HB382  
ROBL25-62-6 HB384

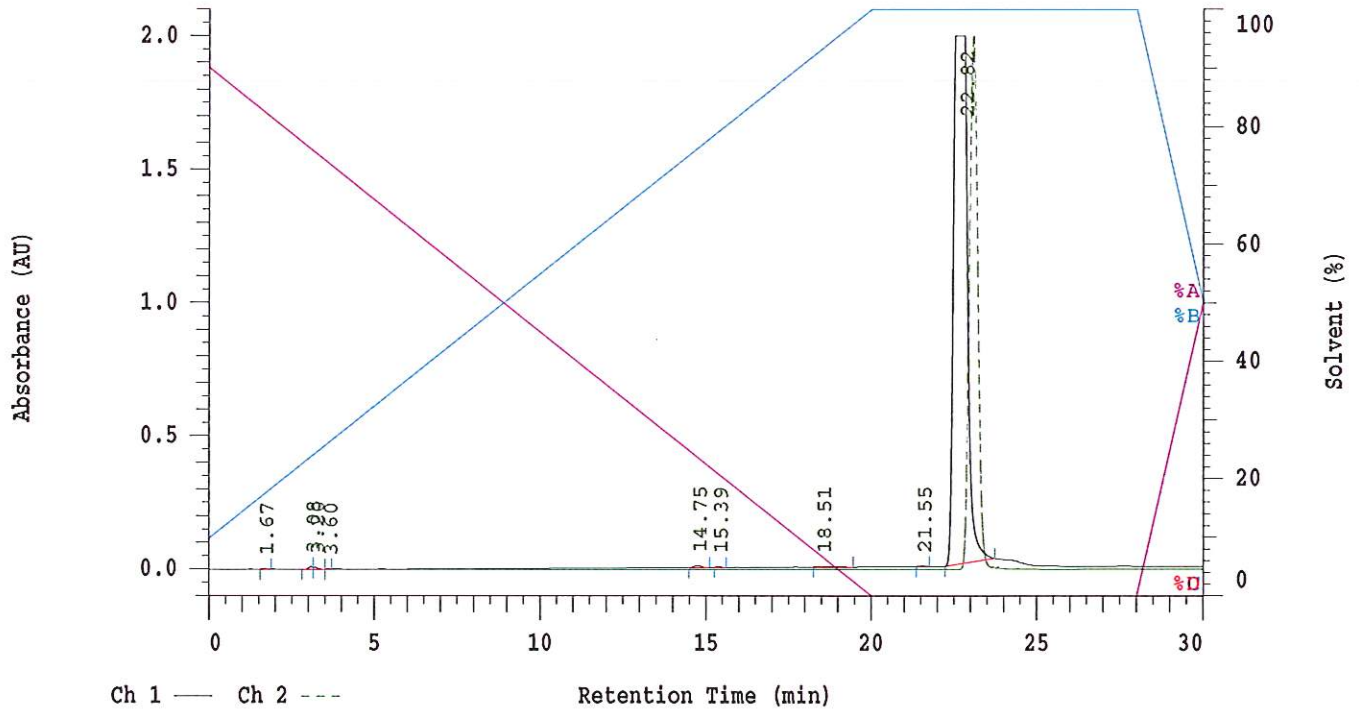
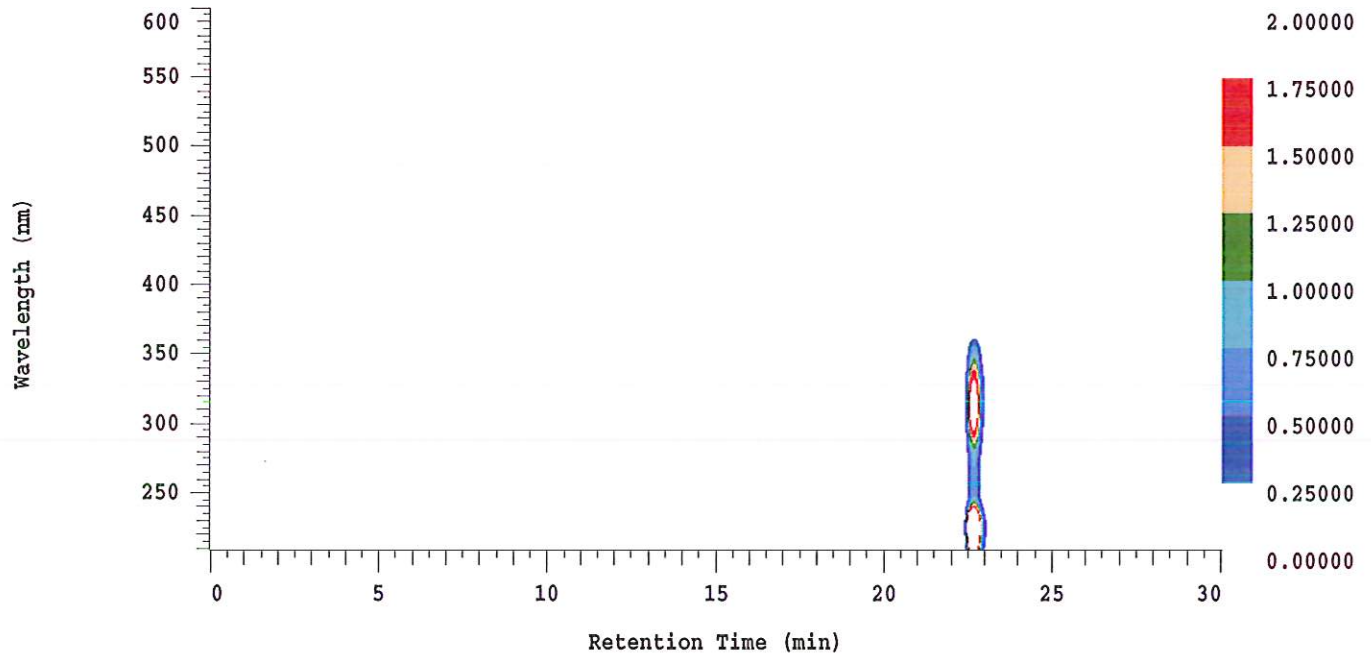
### D-2000 Elite HPLC System Manager Report

Analyzed: 01/24/2013 05:12 PM

Reported: 01/24/2013 05:47 PM

Sample Name: HBOI-384

Sample Description: HBOI-384



Acquisition Method: autosamp\_30mn\_UV220\_wELSD

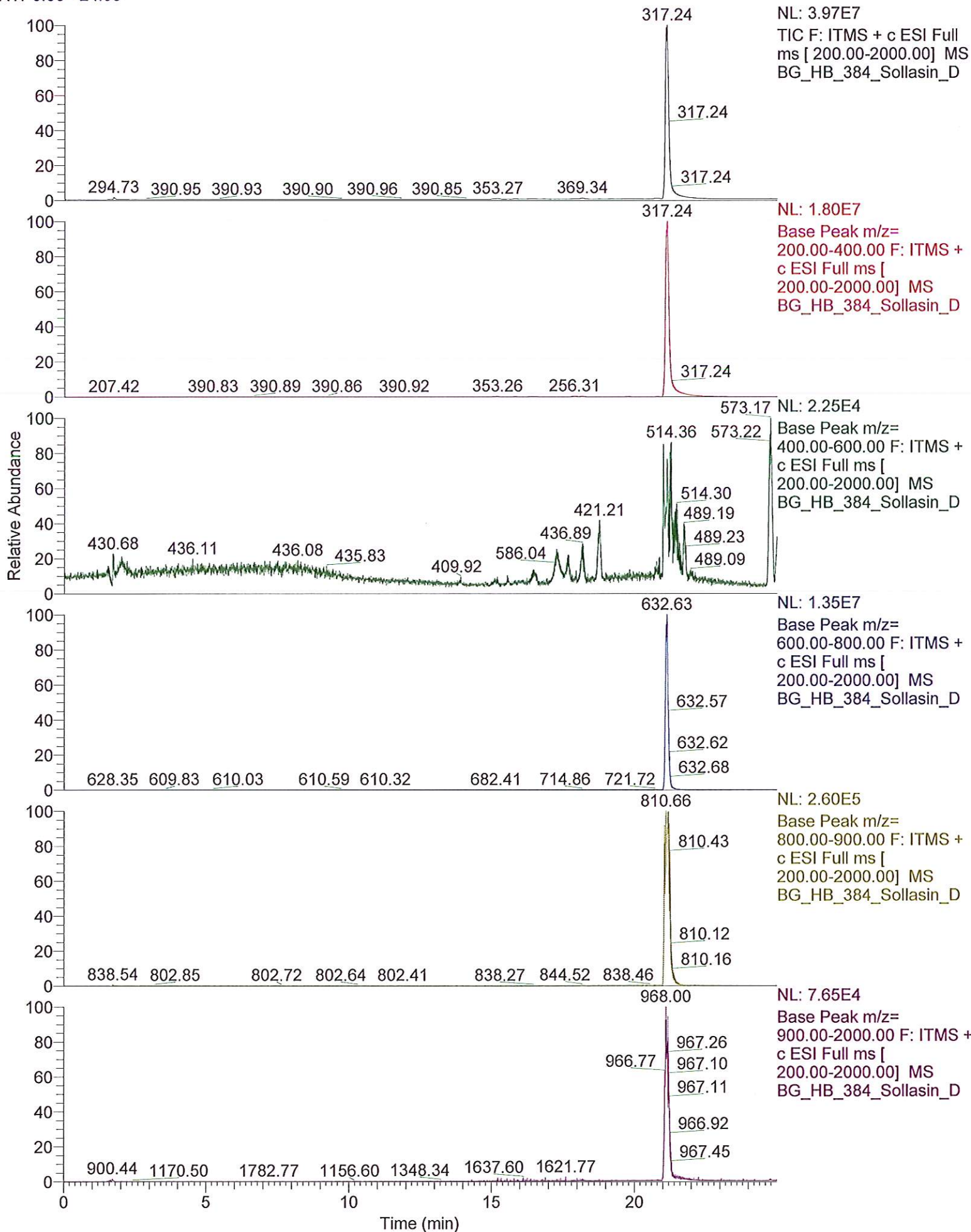
Column Type: Vydac C18

Pump A Solvent A: H2O/5% ACN

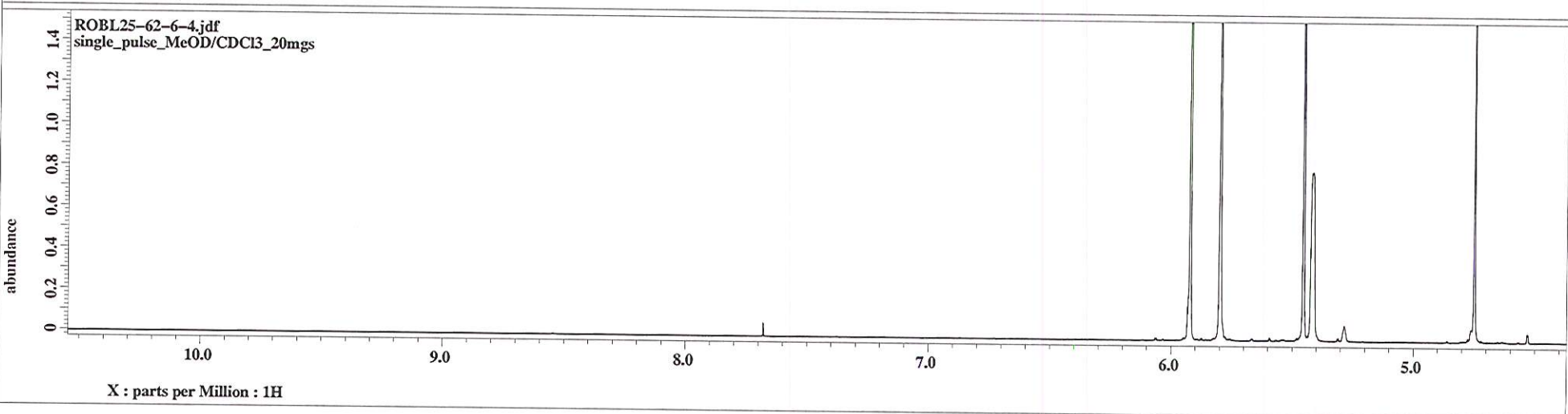
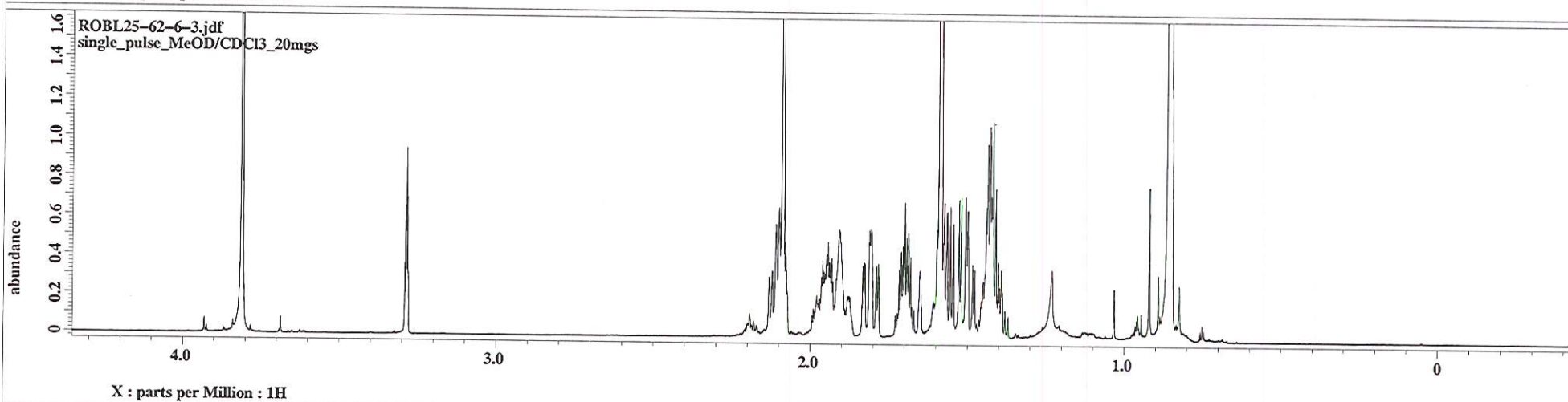
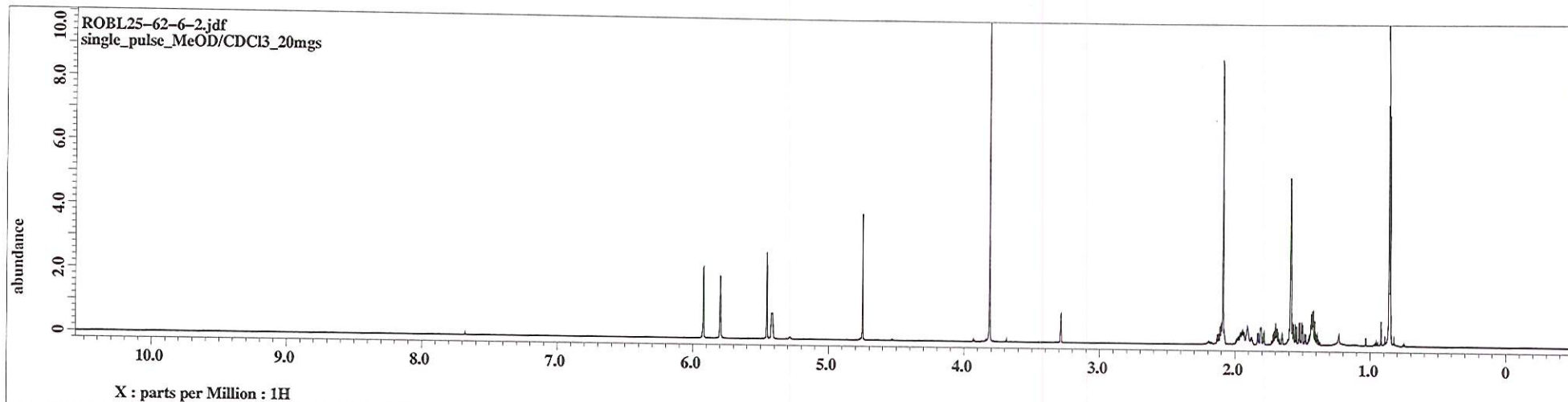
Pump A Solvent B: ACN

Method Description:

RT: 0.00 - 24.99







single\_pulse\_decROBL25-62-6-2.jdf  
single pulse decoupled gated NOE\_MeOD/CDCI3

