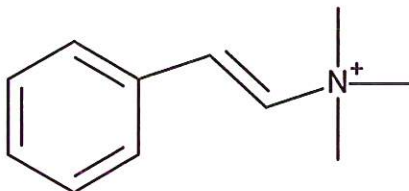


HBOI-358	
N, N, N TRIMETHYL AROMATIC	
$C_{11}H_{16}N^+$	162.13
<i>Corallistes</i> sp.	

isolation scheme (Visio) attached

hplc method (trace attached)

Method: Vydac C18 Protein and Peptide, 4.6 x 250mm, 10 μ
 flow 1 ml/min, detection: PDA: UV (extracted at 220 nm, black); ELSD (green dotted)
 A: H₂O:CH₃CN (95:5, v/v, 0.1% TFA), B: CH₃CN (0.1% TFA)
 t=0 min A:B (90:10, v/v), t=20 min (100%B) , t=28 min (100%B)

LC-MS method

Method: Vydac C18 Protein and Peptide, 2.1x150 mm, flow 0.2 ml/min
 A: H₂O (0.1%formic acid), B: CH₃CN (0.1%formic acid)
 t= 0 min A:B (90:10, v/v), t=15 min (100%B), t=21 min (100%B), t=22.1 min A:B(90:10, v/v)
 using a linear gradient

¹H (600 MHz) CDCl₃ CD₃OD (Methanol-d₄) CDCl₃/CD₃ OD

¹³C (150 MHz) CDCl₃ CD₃OD (Methanol-d₄) CDCl₃/CD₃ OD

solubility CHCl₃/MeOH (9:1) MeOH DMSO

estimated purity >90%

sample weight 21.0 mg

For further information contact:

Amy E. Wright, PhD, HBOI@FAU, 5600 US 1, North, Fort Pierce, FL 34946
awrigh33@hboi.fau.edu, 772-242-2459

Date: 1/28/13

28-V-91-2-001
 Corallistes SP.
 150g
 Ethyl acetate Ethanol (9:1)
 Extract
 RUF1-15-1
 570 mg

Water Partion
 RUSF1-15-3
 125.5 mg

BuOH Partition
 RUSF1-15-2
 300.1mg

15.5g Rf Gold Isco column- Combi-Flash 200 psi system 300.1 mg	RUSF1-15-	4	5	6	7	8	9	10	11	12
	tubes	4-6	7-10	11-16	17-19	20-24	25-28	29-37	38-44	45-48
	mg	38.4	27.5	12	7.2	11.3	2.8	20.3	100	4.2

15.5g Rf Gold Isco column- Combi-Flash 200 psi system 125.3mg	RUSF1-15-	13	14	15	16	17	18
	tubes	2-6	7-12	13-16	17-37	38-42	43-56
	mg	90	6.2	8	2	20	1.4

Combi-Flash:

A: H2O:CH3CN (95:5)-0.1 %TFA, B:CH3CN - 0.1% TFA, 30 ml/min
 t=0 min A:B (80:20), t= 2.3 min A:B (80:20), t=5.8 A:B (65:45), t=30 A:B (5:95)

RUSF1-20-1 was isolated from fractions RUSF1-15-5, RUSF1-15-6, RUSF1-15-14 and RUSF1-15-15.

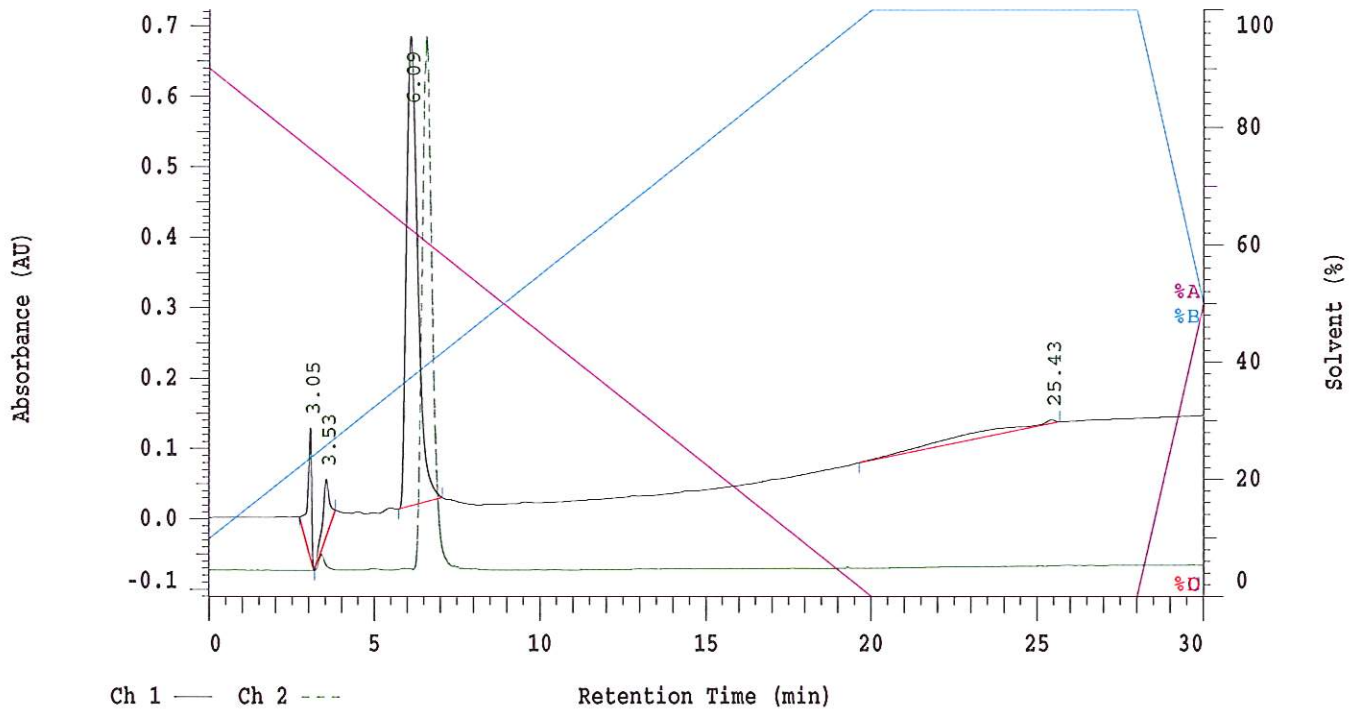
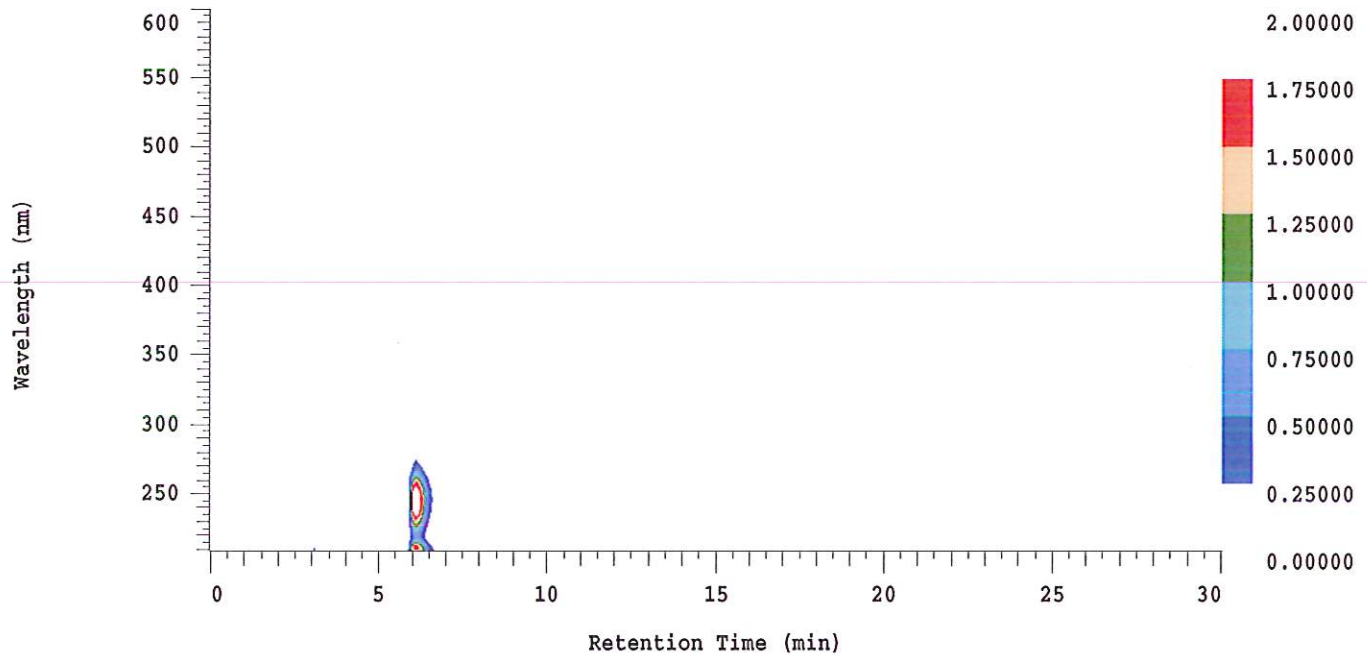
D-2000 Elite HPLC System Manager Report

Analyzed: 01/24/2013 10:29 PM

Reported: 01/25/2013 08:03 AM

Sample Name: HBOI-358

Sample Description: HBOI-358



Acquisition Method: NIH_30min_UV220_wELSD_TFA

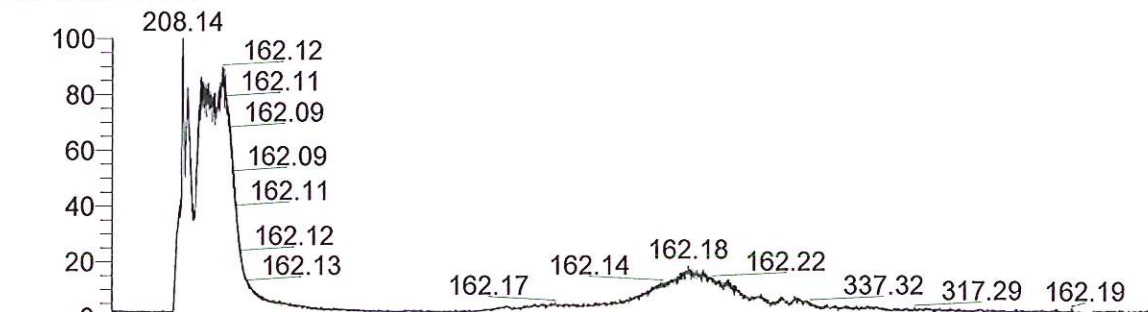
Column Type: Vydac C18

Pump A Solvent A: H2O/5% ACN TFA 0.1%

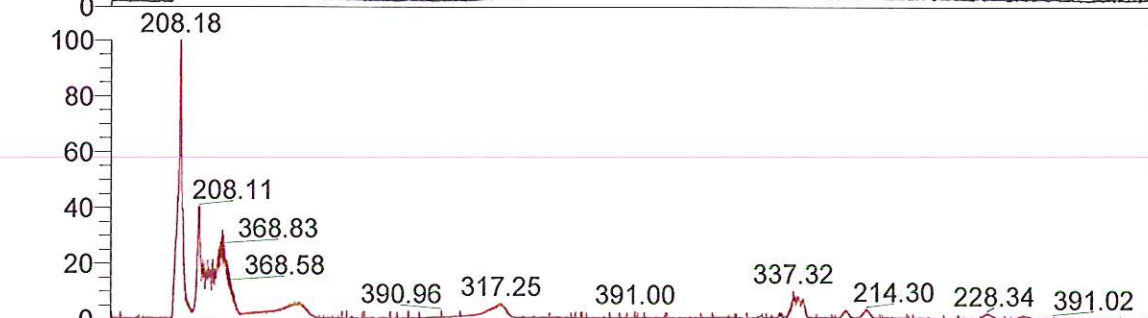
Pump A Solvent B: ACN TFA 0.1%

Method Description:

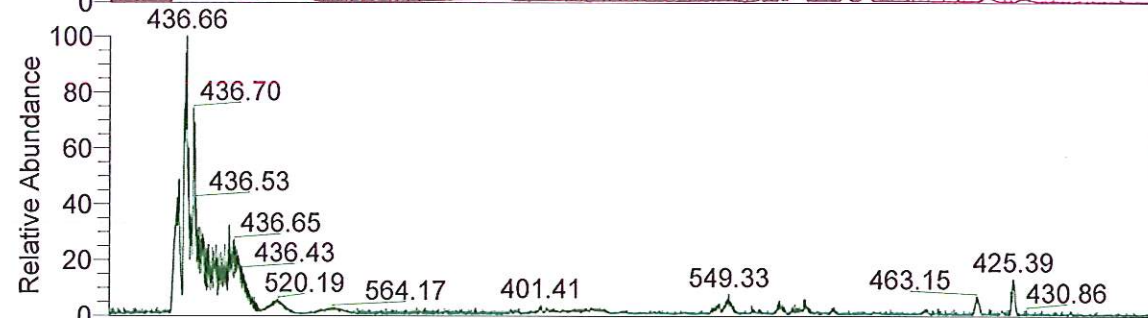
RT: 0.00 - 24.99



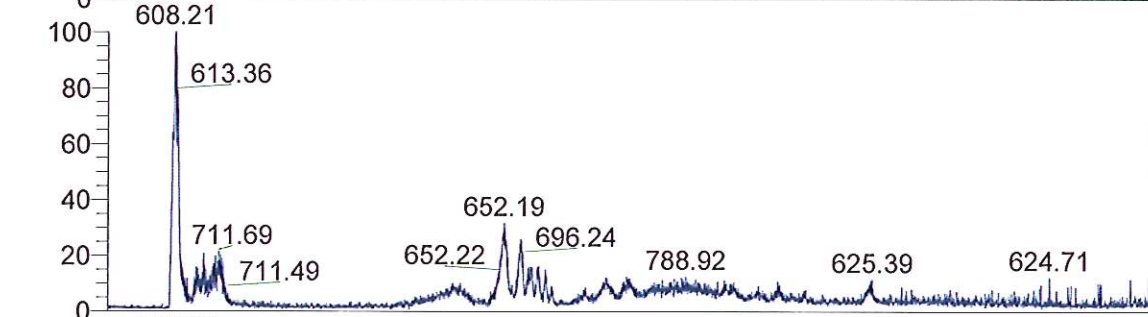
NL: 3.58E6
 TIC F: ITMS + c ESI Full ms [125.00-2000.00] MS
 BG_HB_358_N_N_N_Trimethyl_a
 romatic_130124110201



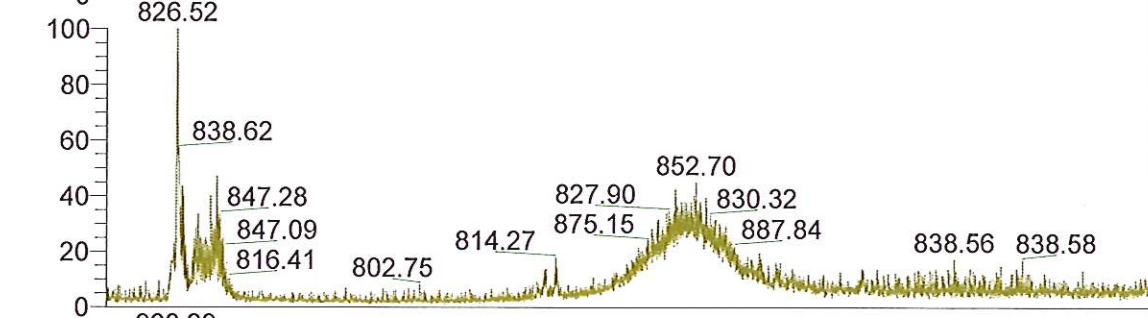
NL: 3.07E5
 Base Peak m/z= 200.00-400.00 F:
 ITMS + c ESI Full ms [125.00-2000.00] MS
 BG_HB_358_N_N_N_Trimethyl_a
 romatic_130124110201



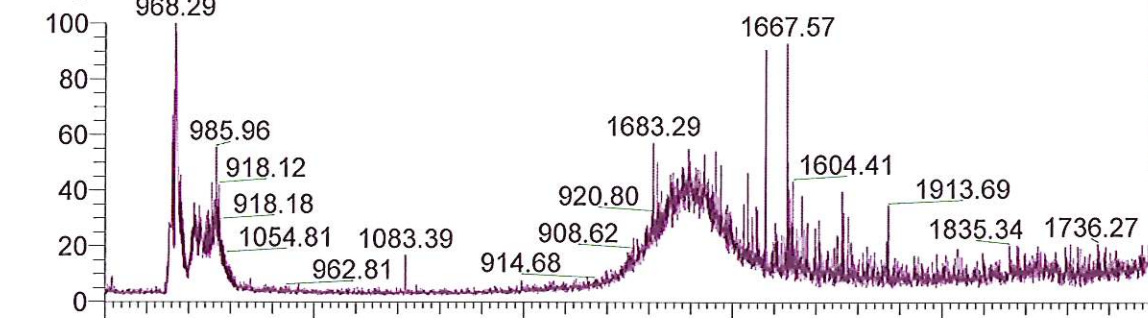
NL: 9.12E4
 Base Peak m/z= 400.00-600.00 F:
 ITMS + c ESI Full ms [125.00-2000.00] MS
 BG_HB_358_N_N_N_Trimethyl_a
 romatic_130124110201



NL: 1.61E4
 Base Peak m/z= 600.00-800.00 F:
 ITMS + c ESI Full ms [125.00-2000.00] MS
 BG_HB_358_N_N_N_Trimethyl_a
 romatic_130124110201



NL: 5.54E3
 Base Peak m/z= 800.00-900.00 F:
 ITMS + c ESI Full ms [125.00-2000.00] MS
 BG_HB_358_N_N_N_Trimethyl_a
 romatic_130124110201



NL: 4.49E3
 Base Peak m/z= 900.00-2000.00
 F: ITMS + c ESI Full ms [125.00-2000.00] MS
 BG_HB_358_N_N_N_Trimethyl_a
 romatic_130124110201

Time (min)

