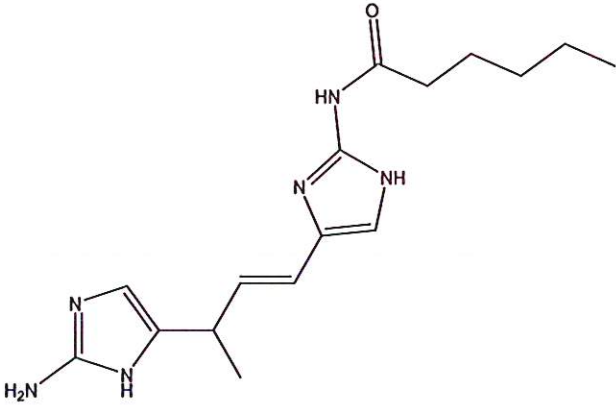


HBOI-354	
MCOO1-53-4 IMIDAZOLE	
$C_{16}H_{24}N_6O$	316.41
<i>Aphrocallistes</i> sp.	
manuscript in prep	

isolation scheme (Visio)

hplc method (trace attached)

Method: Vydac C18 Protein and Peptide, 4.6 x 250mm, 10 μ

flow 1 ml/min, detection: PDA: UV (extracted at 220 nm, black); ELSD (green dotted)

A: H₂O:CH₃CN (95:5, v/v, 0.1% TFA), B: CH₃CN (0.1% TFA)

t=0 min A:B (90:10, v/v), t=20 min (100%B) , t=28 min (100%B)

LC-MS (spectrum attached)

Method: Vydac C18 Protein and Peptide, 2.1x150 mm, flow 0.2 ml/min

A: H₂O(0.1% formic acid), B:CH₃CN(0.1% formic acid)

t= 0 min A:B (90:10, v/v), t=15 min (100%B), t=21 min (100%B), t=22.1 min A:B(90:10, v/v)
using a linear gradient

¹H (600 MHz)

CDCl₃

CD₃OD (Methanol-d₄)

CDCl₃/CD₃OD

¹³C (150 MHz)

CDCl₃

CD₃OD (Methanol-d₄)

CDCl₃/CD₃OD

solubility

CHCl₃/MeOH (9:1)

MeOH

DMSO

estimated purity _90_%

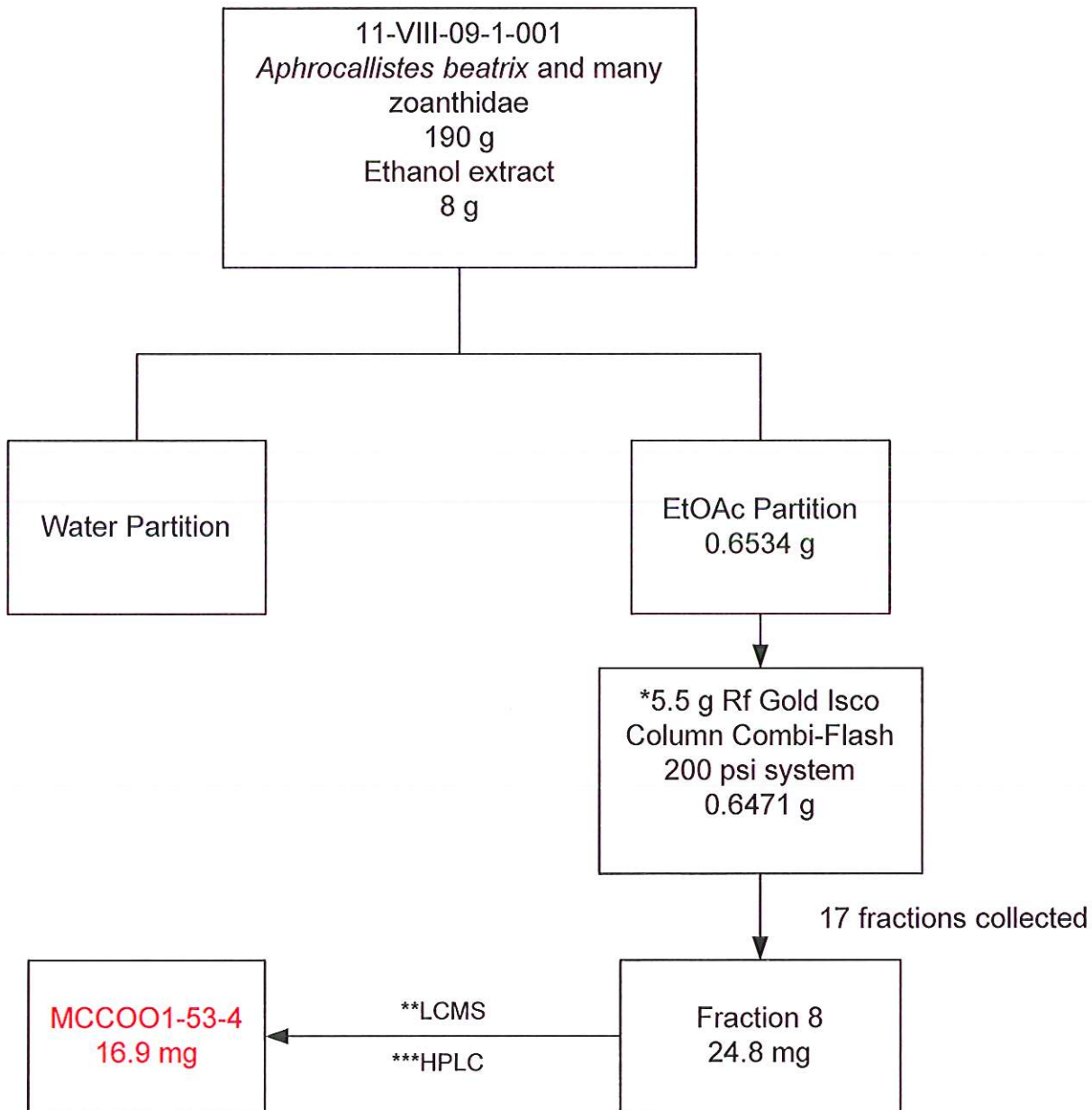
sample weight _19.5_mg

For further information contact:

Amy E. Wright, PhD, HBOI@FAU, 5600 US 1, North, Fort Pierce, FL 34946

awrigh33@hboi.fau.edu, 772-242-2459

Date: 1/28/13



*Combi-Flash

A: H₂O, B: CH₃CN

t=0 min (100%A), t=1 min (100%A), t=10.5 min A:B (70:30), t=17 min (100% B)

**LC/MS

A: H₂O:CH₃CN (95:5) - 0.1% TFA B: CH₃CN - 0.1% TFA, 15 ml/min

t=0 min A:B (80:20), t= 14 min (100% B), t=15 min A:B (50:50)

***HPLC

A: H₂O:CH₃CN (95:5) - 0.1% TFA B: CH₃CN - 0.1% TFA

isocratic A:B (80:20), 2.8 ml/min, 12 min

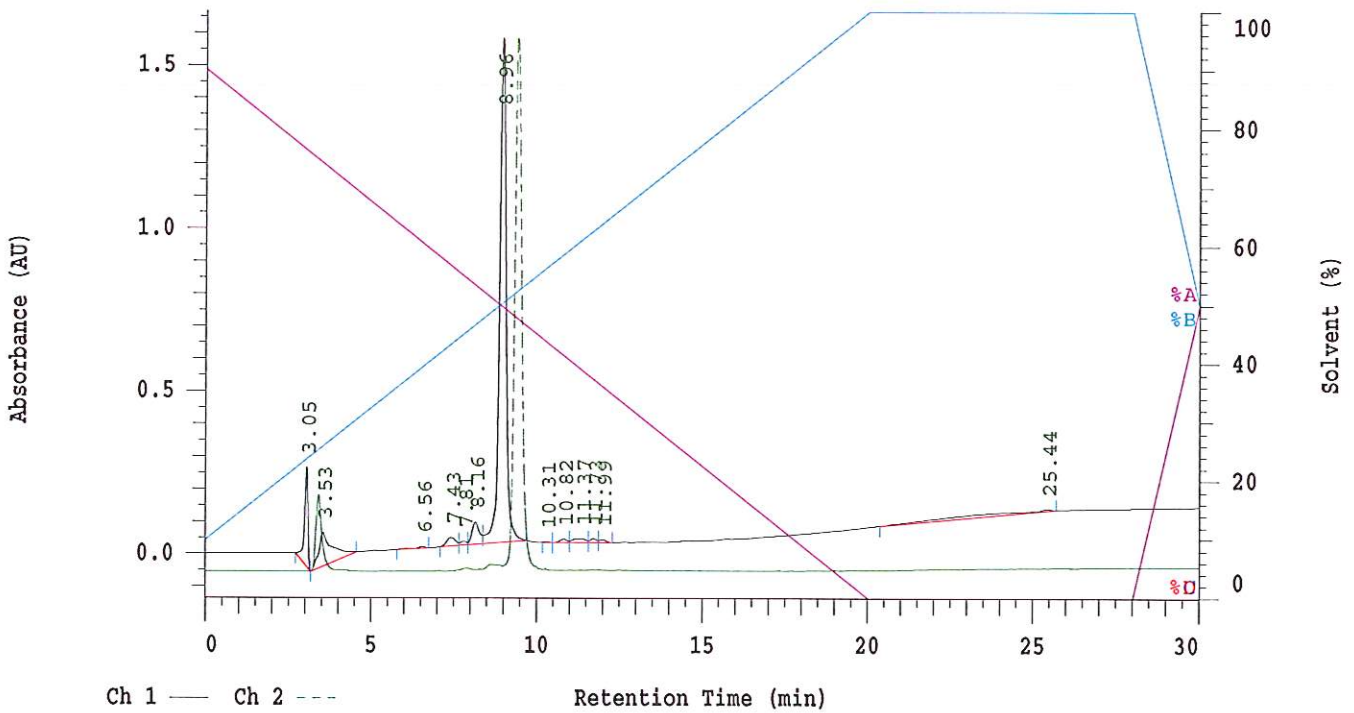
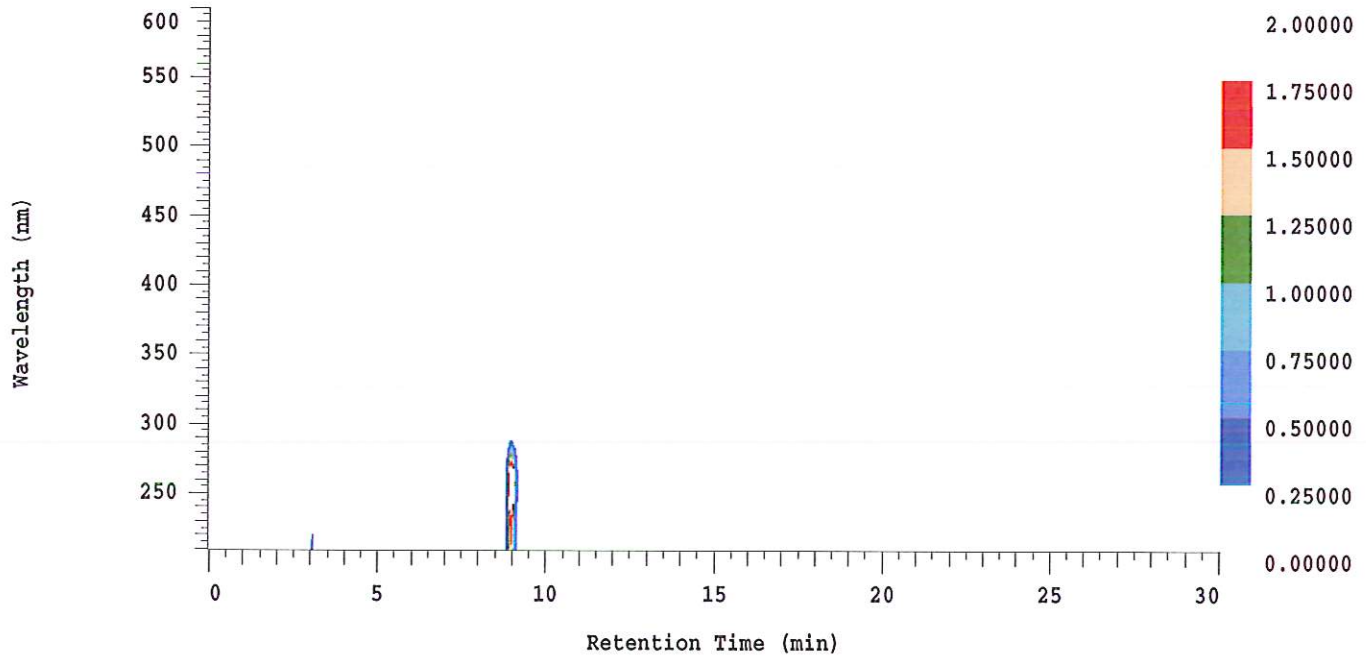
D-2000 Elite HPLC System Manager Report

Analyzed: 01/25/2013 01:40 AM

Reported: 01/25/2013 08:04 AM

Sample Name: HBOI-354

Sample Description: HBOI-354



Acquisition Method: NIH_30min_UV220_wELSD_TFA

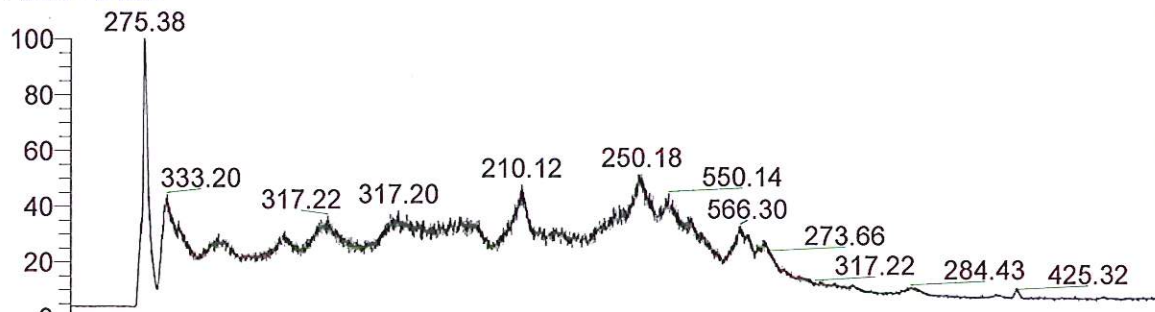
Column Type: Vydac C18

Pump A Solvent A: H2O/5% ACN TFA 0.1%

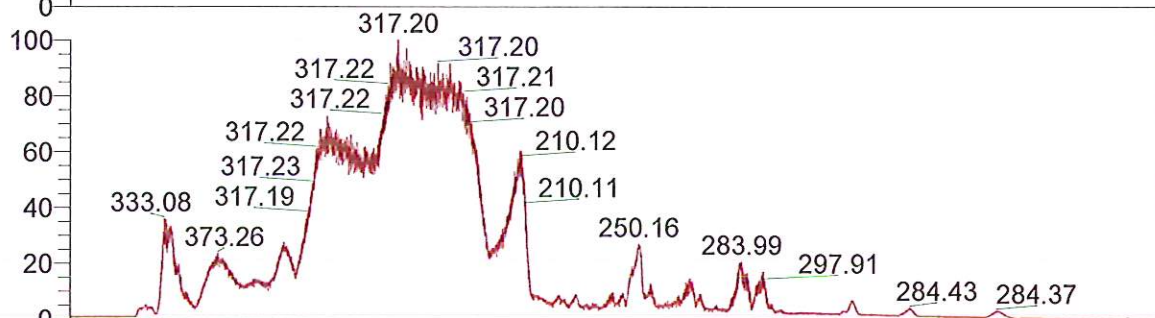
Pump A Solvent B: ACN TFA 0.1%

Method Description:

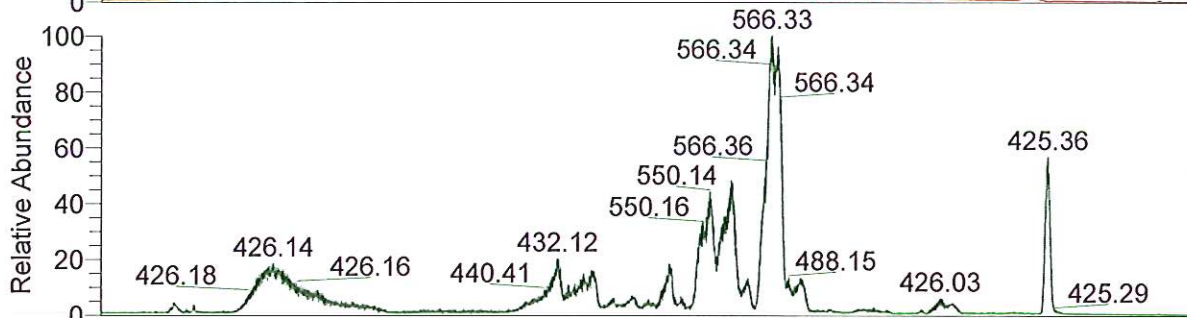
RT: 0.00 - 24.99



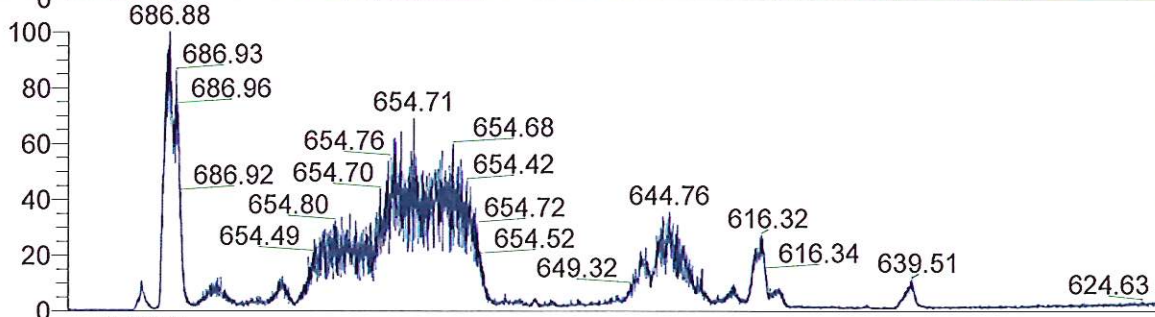
NL: 5.73E6
TIC F: ITMS + c ESI Full ms [200.00-2000.00] MS
BG_HB_354_MCOO1_53_4_i midazole_2



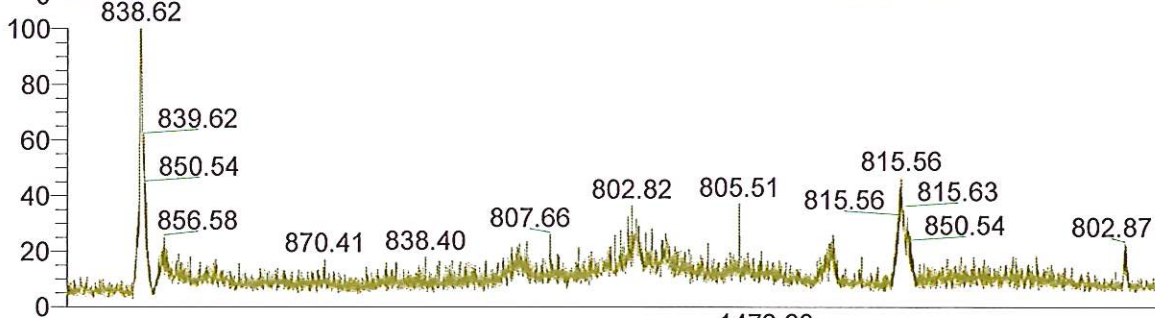
NL: 1.06E6
Base Peak m/z=
200.00-400.00 F: ITMS + c
ESI Full ms [200.00-2000.00] MS
BG_HB_354_MCOO1_53_4_i midazole_2



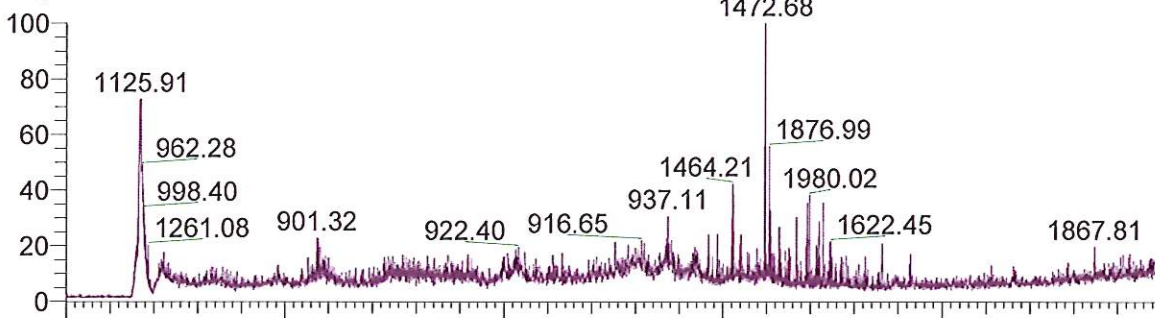
NL: 2.68E5
Base Peak m/z=
400.00-600.00 F: ITMS + c
ESI Full ms [200.00-2000.00] MS
BG_HB_354_MCOO1_53_4_i midazole_2



NL: 8.41E4
Base Peak m/z=
600.00-800.00 F: ITMS + c
ESI Full ms [200.00-2000.00] MS
BG_HB_354_MCOO1_53_4_i midazole_2

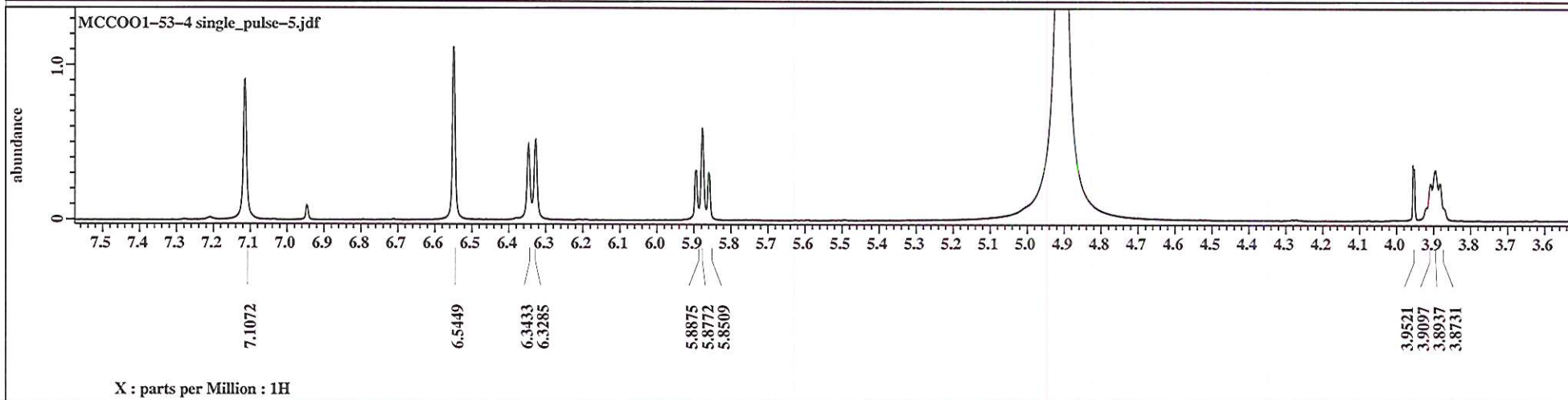
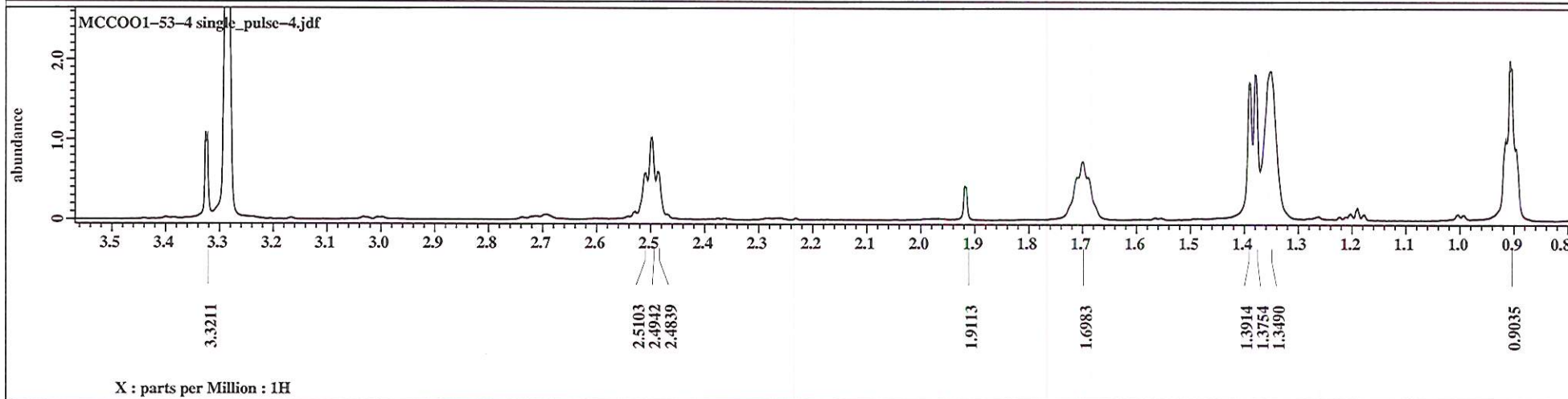
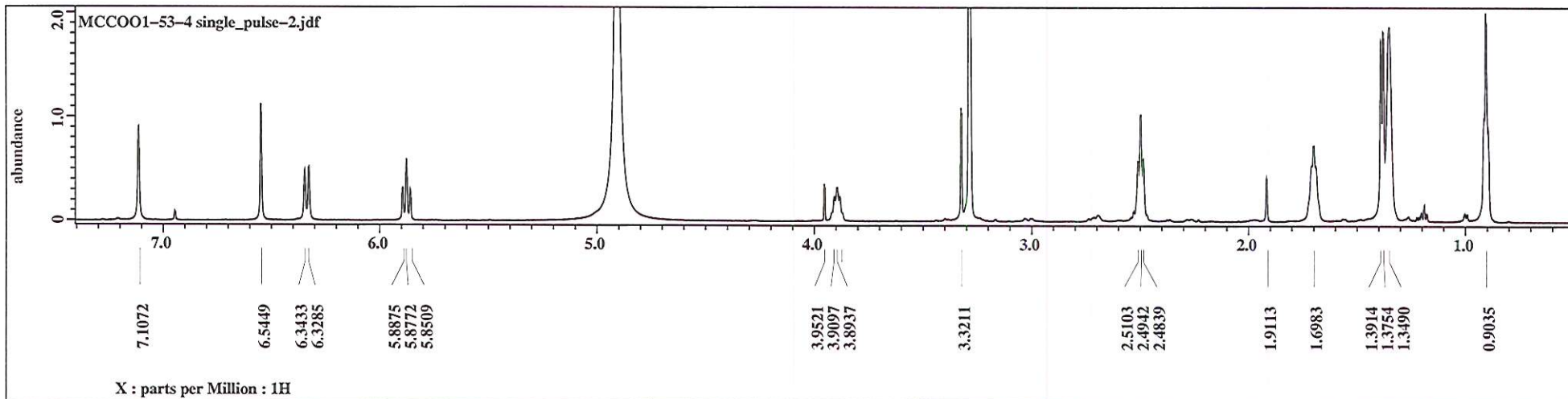


NL: 7.13E3
Base Peak m/z=
800.00-900.00 F: ITMS + c
ESI Full ms [200.00-2000.00] MS
BG_HB_354_MCOO1_53_4_i midazole_2



NL: 9.33E3
Base Peak m/z=
900.00-2000.00 F: ITMS + c
ESI Full ms [200.00-2000.00] MS
BG_HB_354_MCOO1_53_4_i midazole_2

Time (min)



MCC001-53-4

