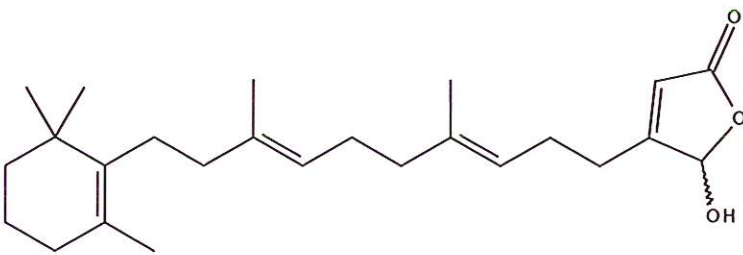


HBOI-350	
LUFFARIELLOLIDE	
$C_{25}H_{38}O_3$	386.57
Dictyoceratida	
E. Elkhayat, et al., 2004, <i>J. Nat. Prod.</i> , 67: 1809-1817	

isolation scheme (Visio) attached

hplc method (trace attached)

Method: Vydac C18 Protein and Peptide, 4.6 x 250mm, 10 μ
 flow 1 ml/min, detection: PDA: UV (extracted at 220 nm, black); ELSD (green dotted)
 A: H₂O:CH₃CN (95:5, v/v), B: CH₃CN
 t=0 min A:B (90:10, v/v), t=20 min (100%B) , t=28 min (100%B)

LC-MS method

Method: Vydac C18 Protein and Peptide, 2.1x150 mm, flow 0.2 ml/min
 A: H₂O (0.1% formic acid), B:CH₃CN (0.1% formic acid)
 t= 0 min A:B (90:10, v/v), t=15 min (100%B), t=21 min (100%B), t=22 min A:B(90:10, v/v)
 using a linear gradient

¹H (600 MHz) CDCl₃ CD₃OD (Methanol-d₄) CDCl₃/CD₃OD

¹³C (150 MHz) CDCl₃ CD₃OD (Methanol-d₄) CDCl₃/CD₃OD

solubility CHCl₃/MeOH (9:1) MeOH DMSO

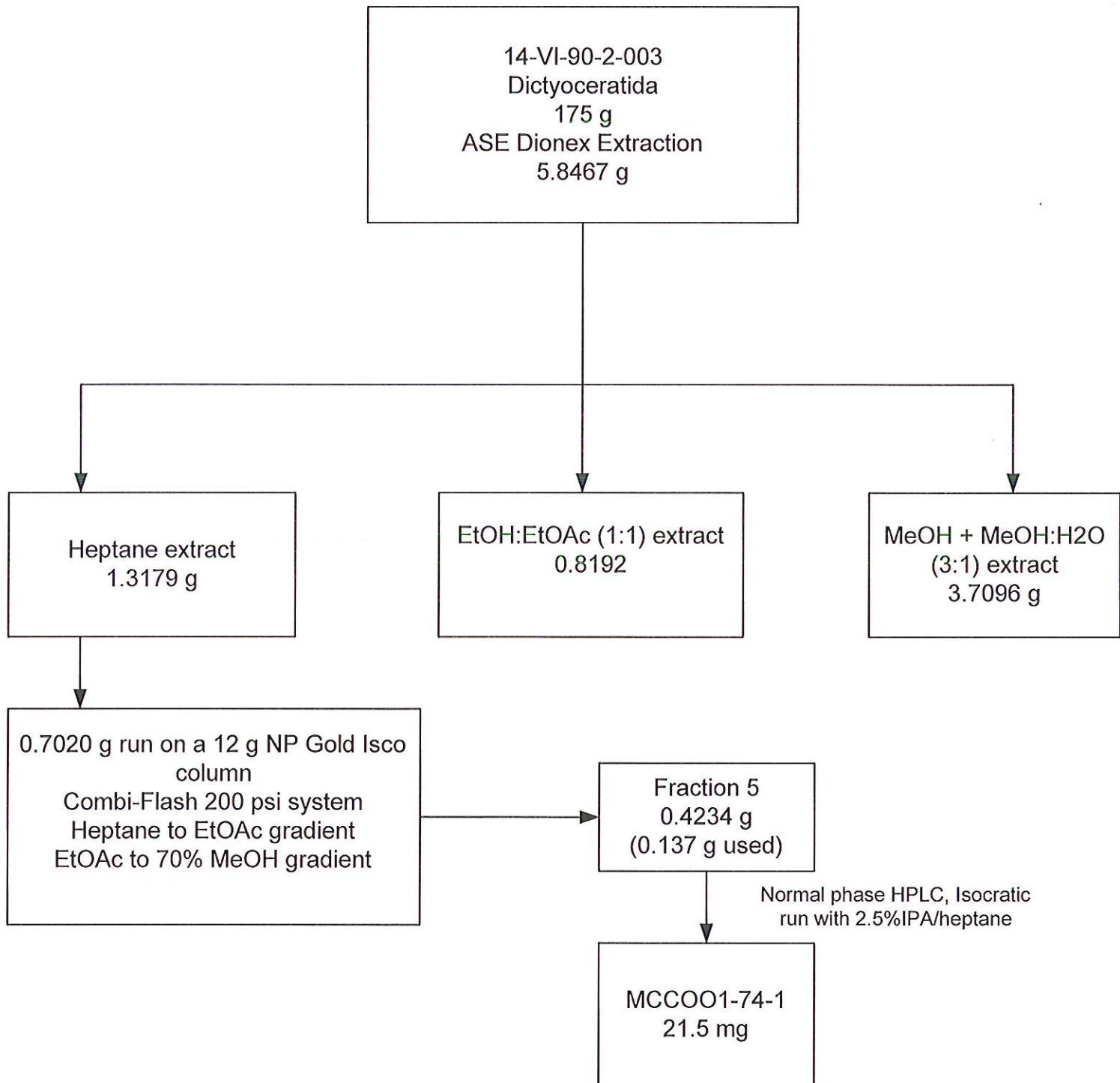
estimated purity >90%

sample weight 22.8 mg

For further information contact:

Amy E. Wright, PhD, HBOI@FAU, 5600 US 1, North, Fort Pierce, FL 34946
awrigh33@hboi.fau.edu, 772-242-2459

Date: 7/15/13



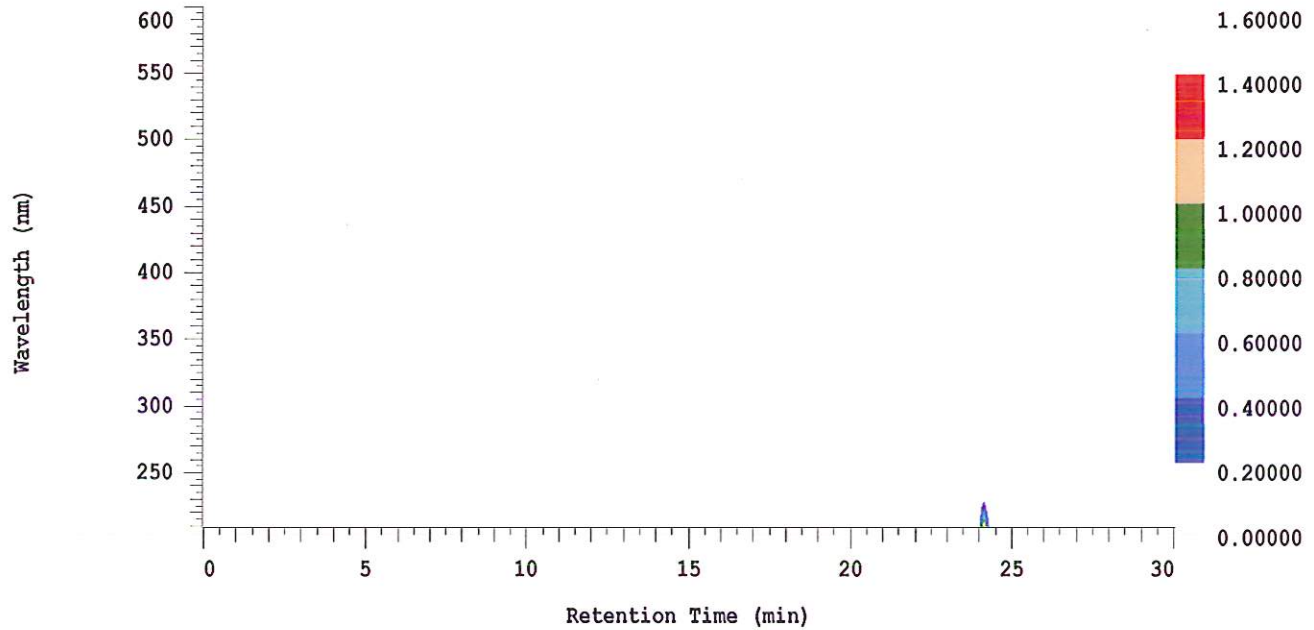
D-2000 Elite HPLC System Manager Report

Analyzed: 06/28/2013 11:53 AM

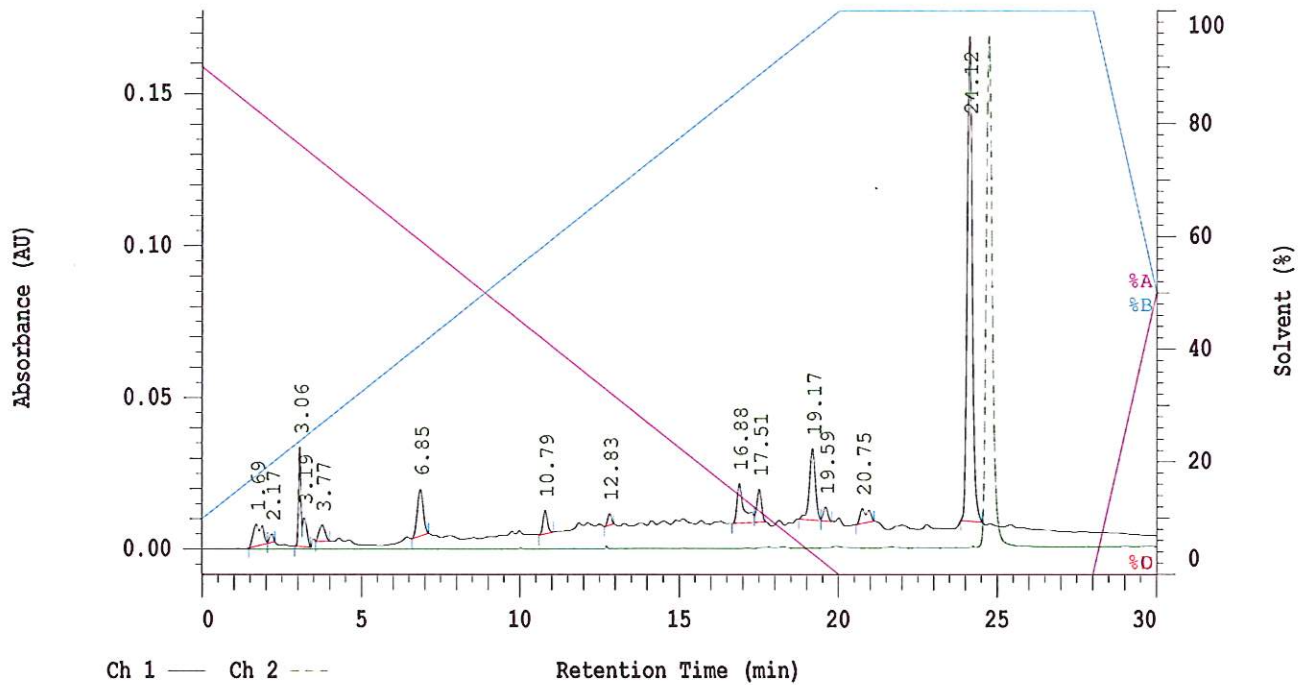
Reported: 06/28/2013 03:59 PM

Sample Name: HBOI-350

Sample Description: HBOI-350 Luffariellolide



Channel 1 Chrom Type: Fixed WL Chromatogram, 230 nm



Acquisition Method: autosampler_30min_wELSD

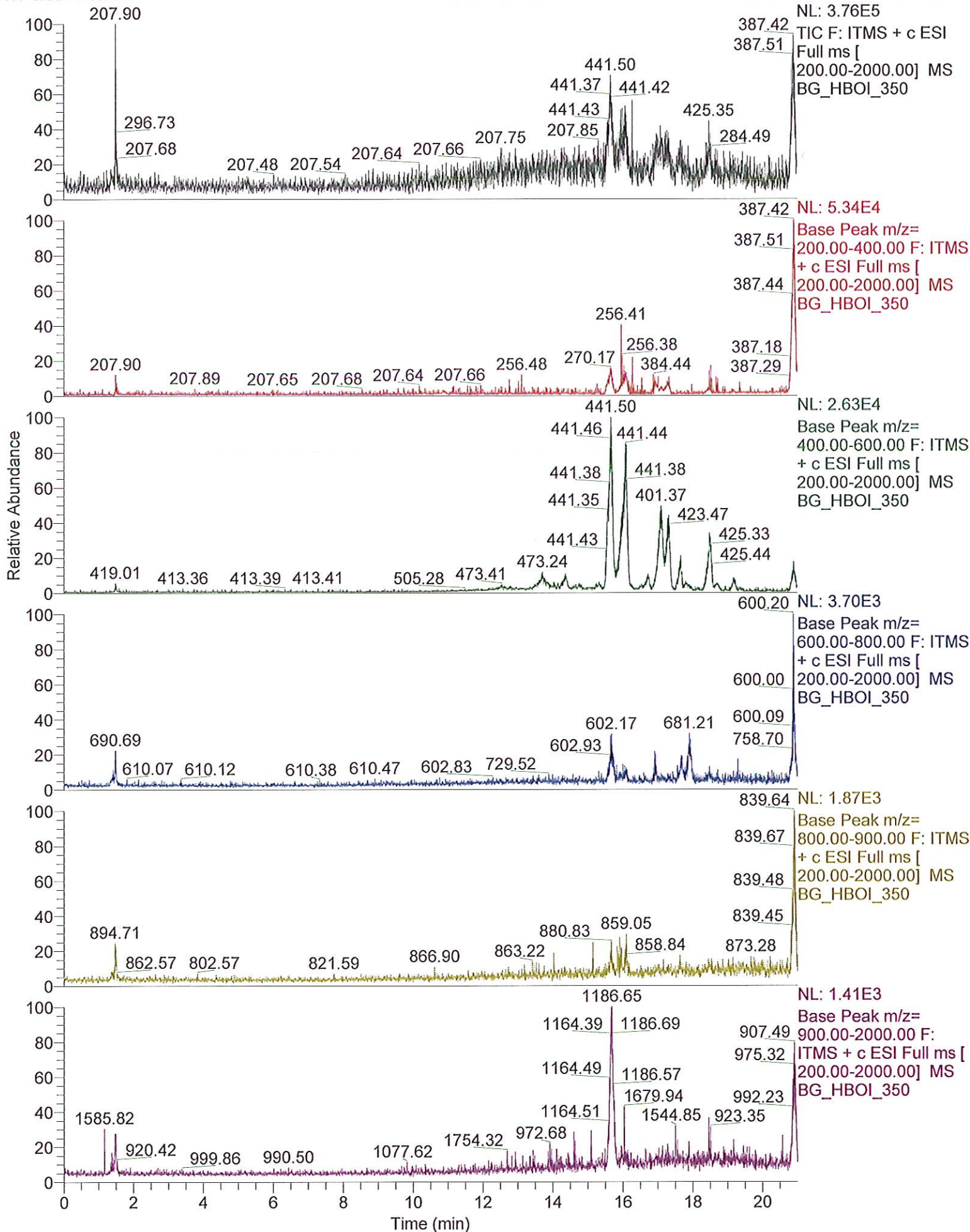
Column Type: Vydac C18

Pump A Solvent A: H2O/5% ACN

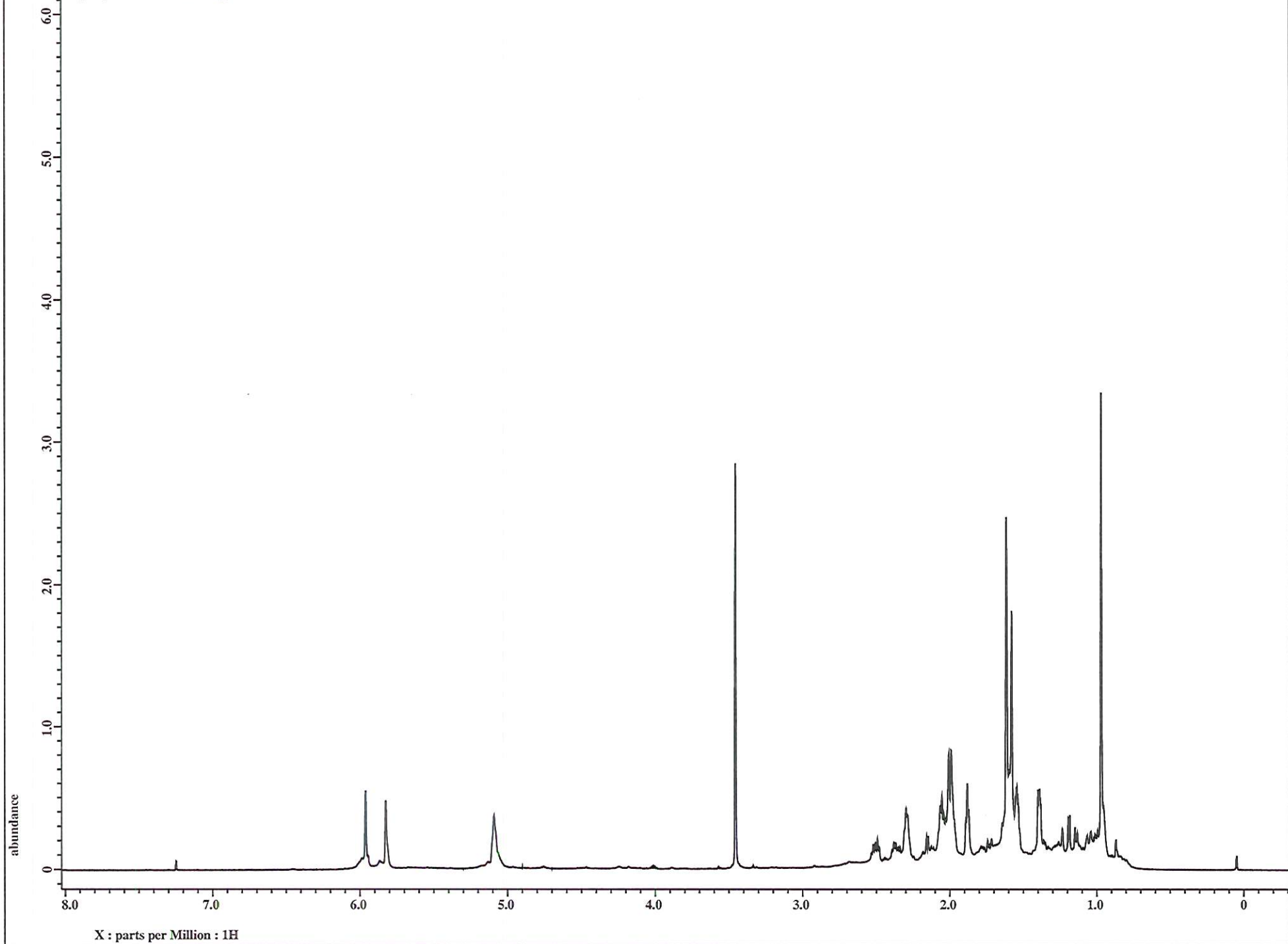
Pump A Solvent B: ACN

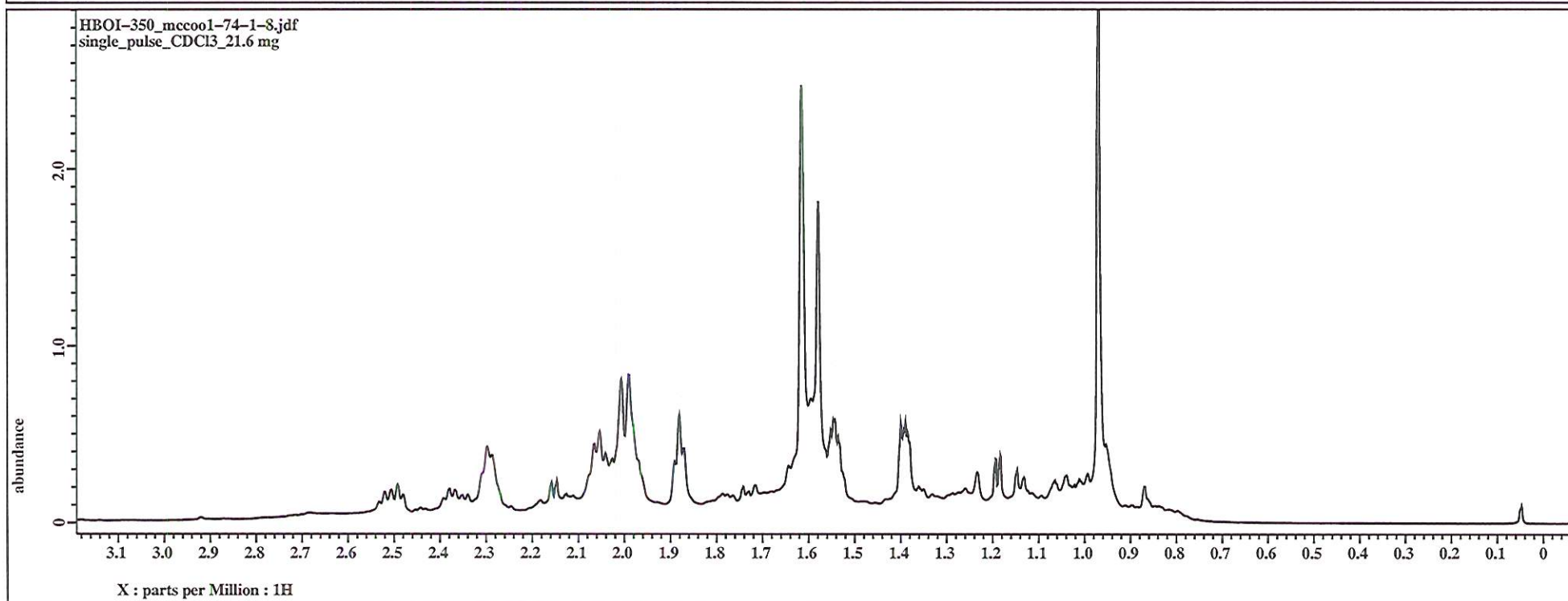
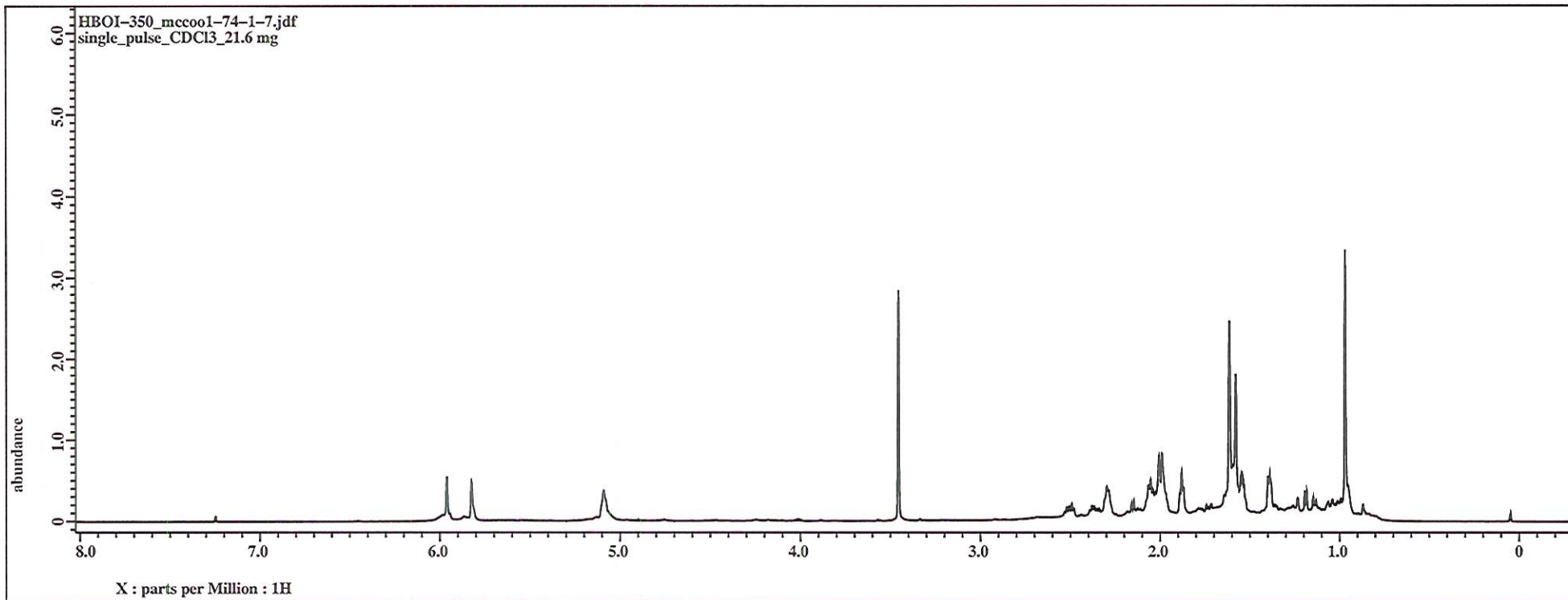
Method Description:

RT: 0.00 - 20.99

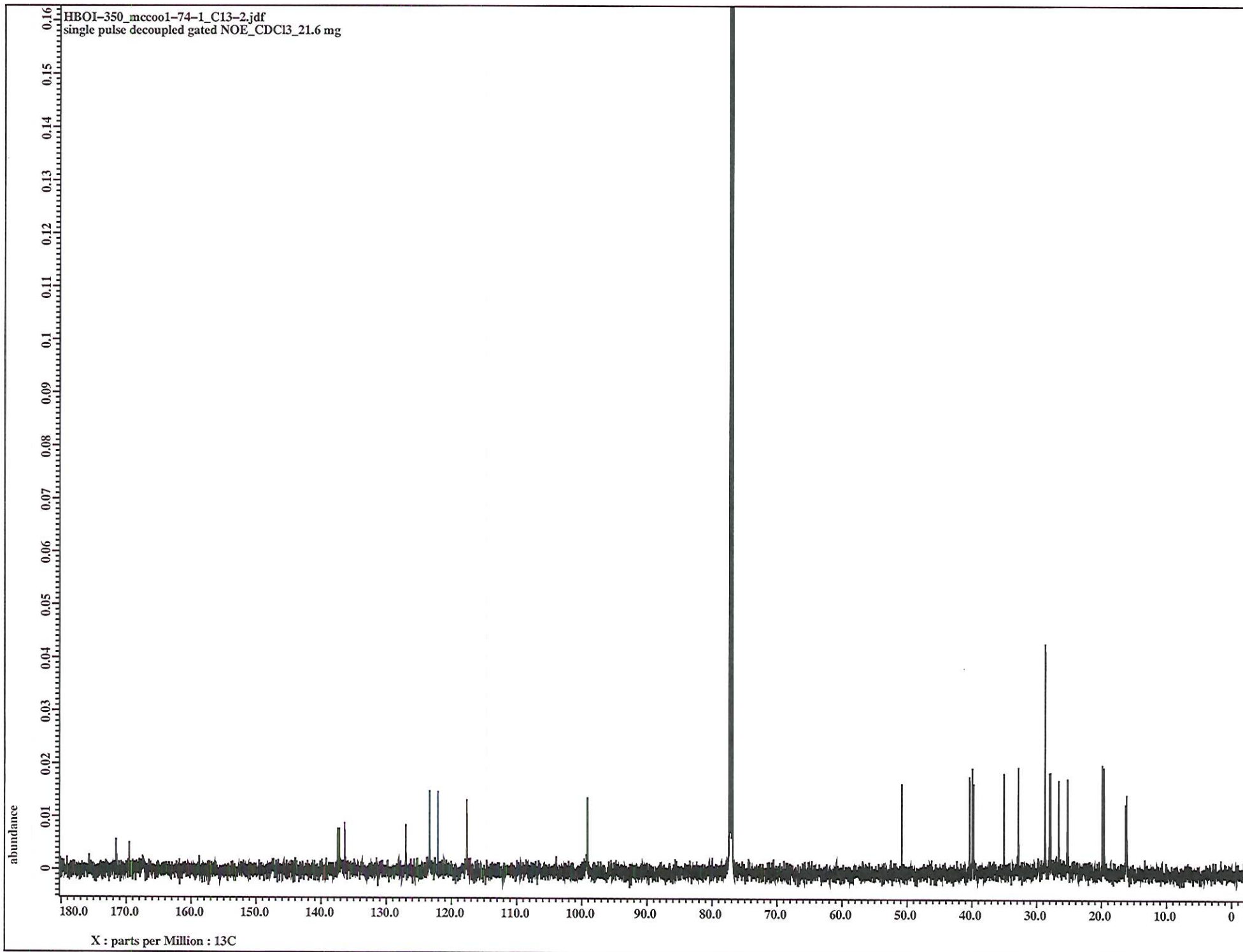


HBOI-350_mccoo1-74-1-7.jdf
single_pulse_CDCl3_21.6 mg





HBOI-350_mccoo1-74-1_C13-2.jdf
single pulse decoupled gated NOE_CDC13_21.6 mg



HBOI-350_mcco1-74-1-2.jdf
single_pulse_MeOH_21.6 mg

