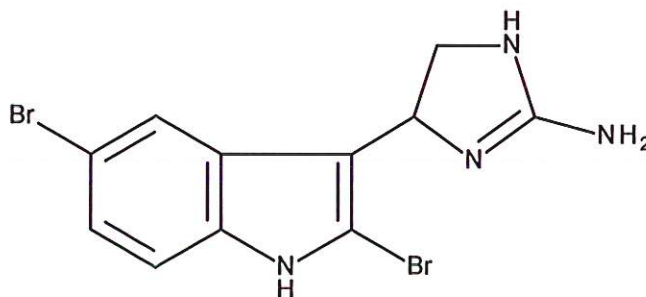


HBOI-285



DISCODERMINDOLE

$C_{11}H_{10}Br_2N_4$

358.03

Discodermia polydiscus

Cohen, Paul, Gunasekera, Longley and Pomponi, 2004, *Pharm. Biol.*, 42(1): 59-61

hplc (trace attached)

Method: Vydac C18 Protein and Peptide, 4.6 x 250mm, 10 μ
 flow 1 ml/min, detection: PDA: UV (extracted at 220 nm, black); ELSD (green dotted)
 A: H₂O:CH₃CN (95:5, v/v, 0.1% TFA), B: CH₃CN (0.1% TFA)
 t=0 min A:B (90:10, v/v), t=20 min (100%B) , t=28 min (100%B)

LC-MS (spectrum attached)

Method: Vydac C18 Protein and Peptide, 2.1x150 mm, flow 0.2 ml/min
 A: H₂O (0.1% formic acid), B:CH₃CN (0.1% formic acid)
 T= 0 min A:B (90:10, v/v), t=15 min (100%B), t=21 min (100%B), t=22.1 min A:B (90:10, v/v)
 using a linear gradient

¹H (600 MHz) CDCl₃ CD₃OD (Methanol-d₄) CDCl₃/CD₃OD

¹³C (150 MHz) CDCl₃ CD₃OD (Methanol-d₄) CDCl₃/CD₃OD

solubility CHCl₃/MeOH (9:1) MeOH DMSO

estimated purity __>90_%

sample weight __18.4_mg

For further information contact:

Amy E. Wright, PhD, HBOI@FAU, 5600 US 1, North, Fort Pierce, FL 34946
awrigh33@hboi.fau.edu, 772-242-2459

Date: 1/28/13

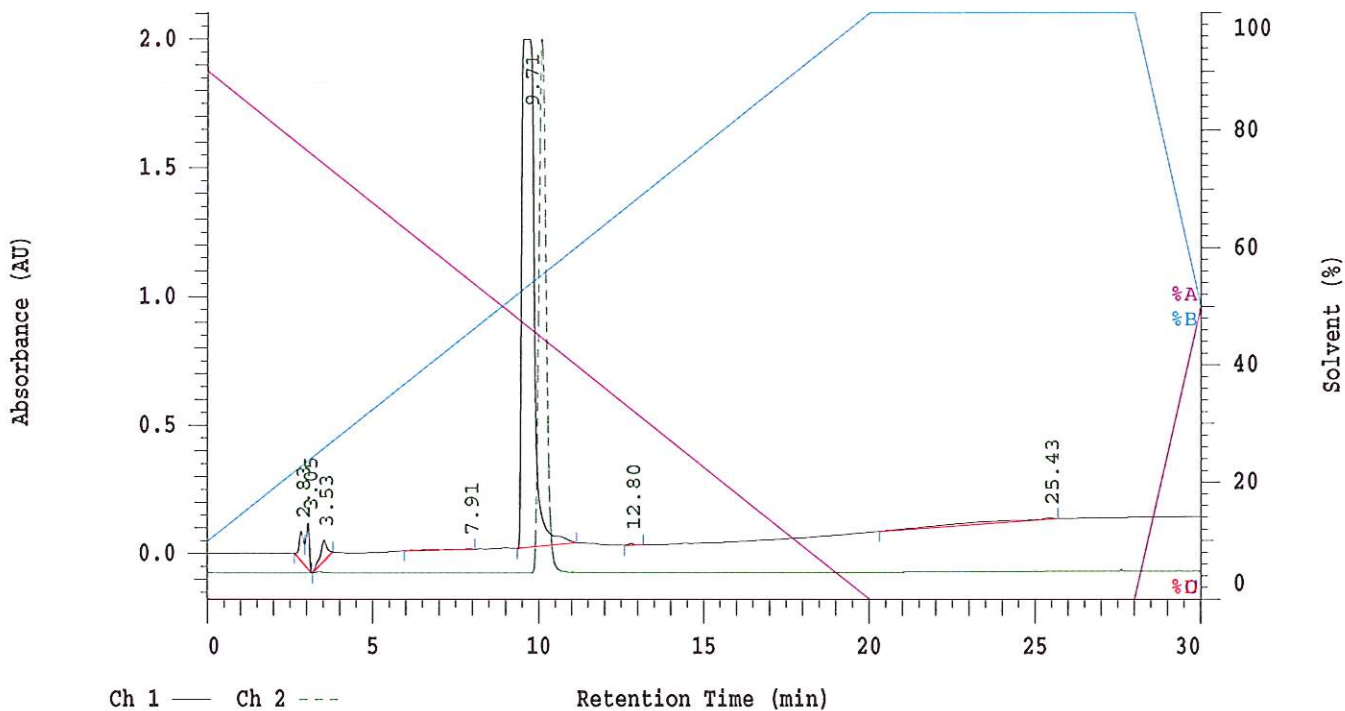
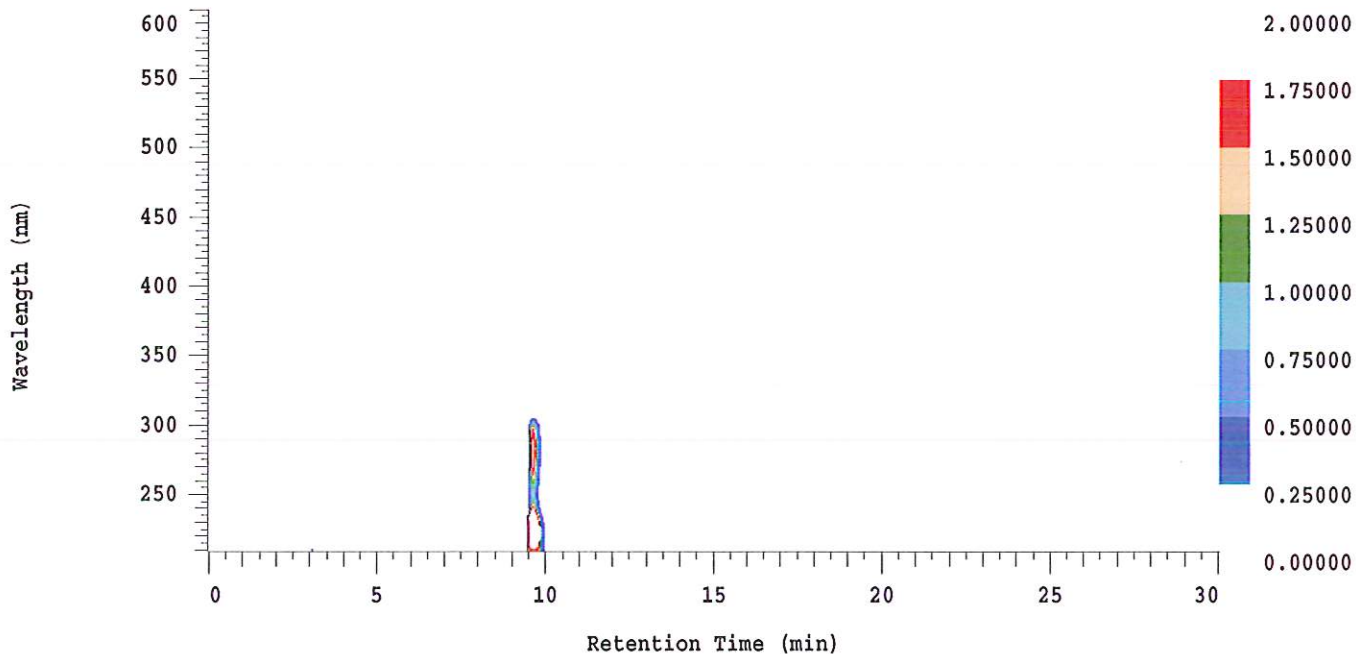
D-2000 Elite HPLC System Manager Report

Analyzed: 01/24/2013 09:51 PM

Reported: 01/25/2013 08:03 AM

Sample Name: HBOI-285

Sample Description: HBOI-285



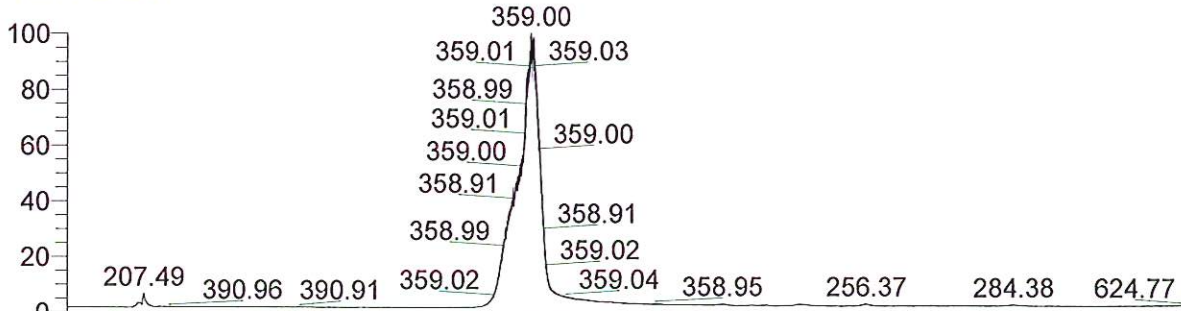
Acquisition Method: NIH_30min_UV220_wELSD_TFA

Column Type: Vydac C18

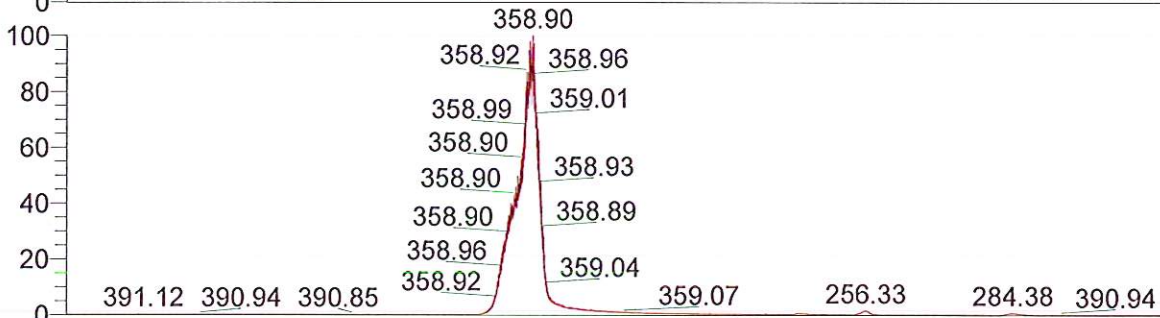
Pump A Solvent A: H2O/5% ACN TFA 0.1% Pump A Solvent B: ACN TFA 0.1%

Method Description:

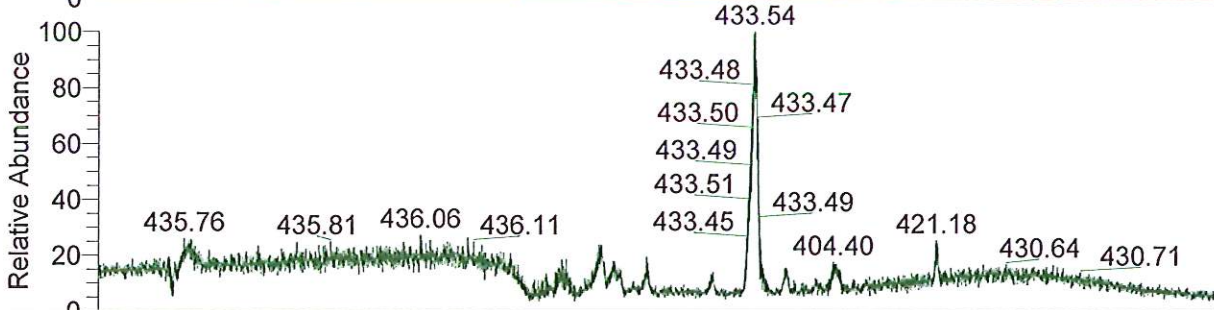
RT: 0.00 - 24.99



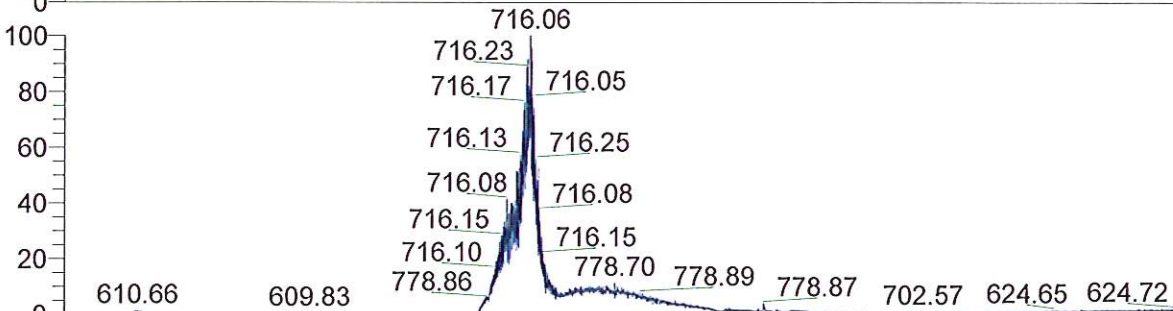
NL: 1.26E7
TIC F: ITMS + c ESI Full ms [200.00-2000.00] MS
BG_HB_285_Discodermindole



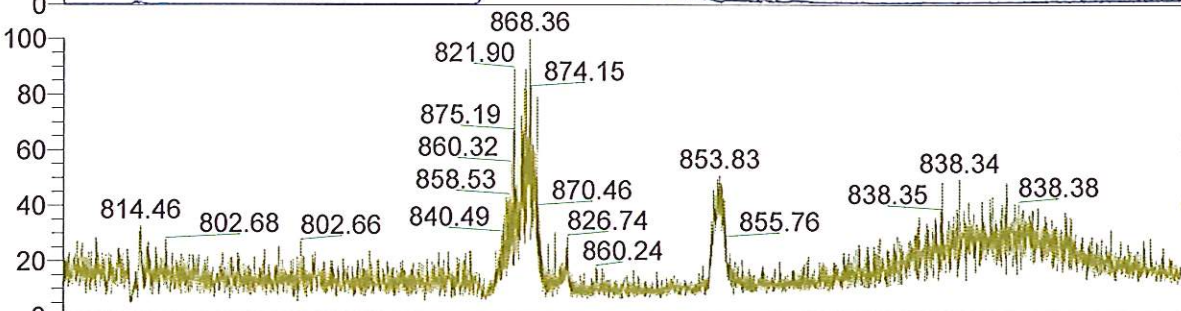
NL: 5.40E6
Base Peak m/z= 200.00-400.00 F: ITMS + c ESI Full ms [200.00-2000.00] MS
BG_HB_285_Discodermindole



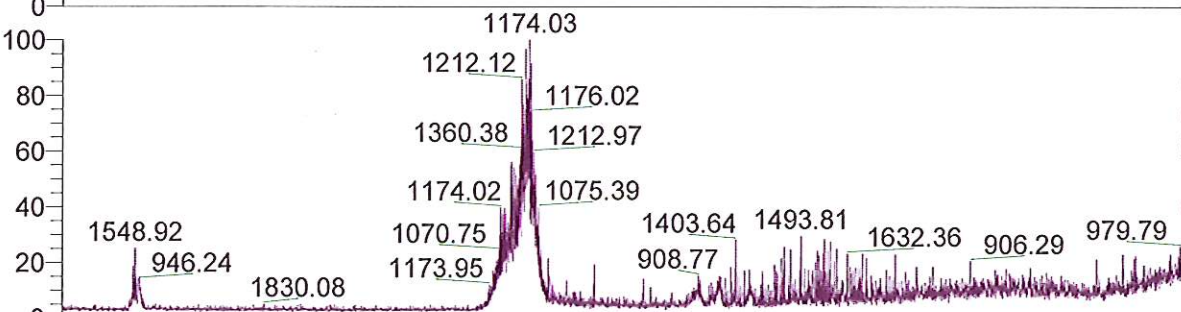
NL: 1.72E4
Base Peak m/z= 400.00-600.00 F: ITMS + c ESI Full ms [200.00-2000.00] MS
BG_HB_285_Discodermindole



NL: 1.21E5
Base Peak m/z= 600.00-800.00 F: ITMS + c ESI Full ms [200.00-2000.00] MS
BG_HB_285_Discodermindole

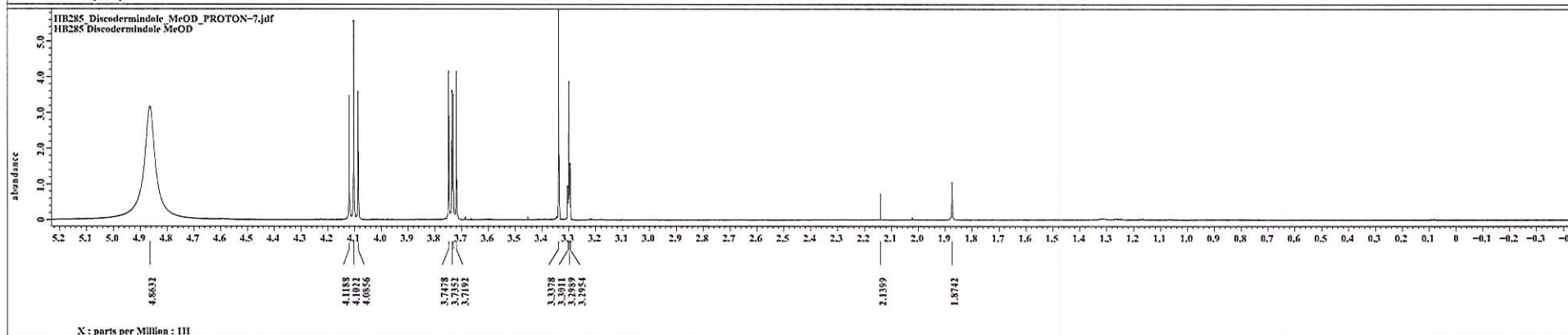
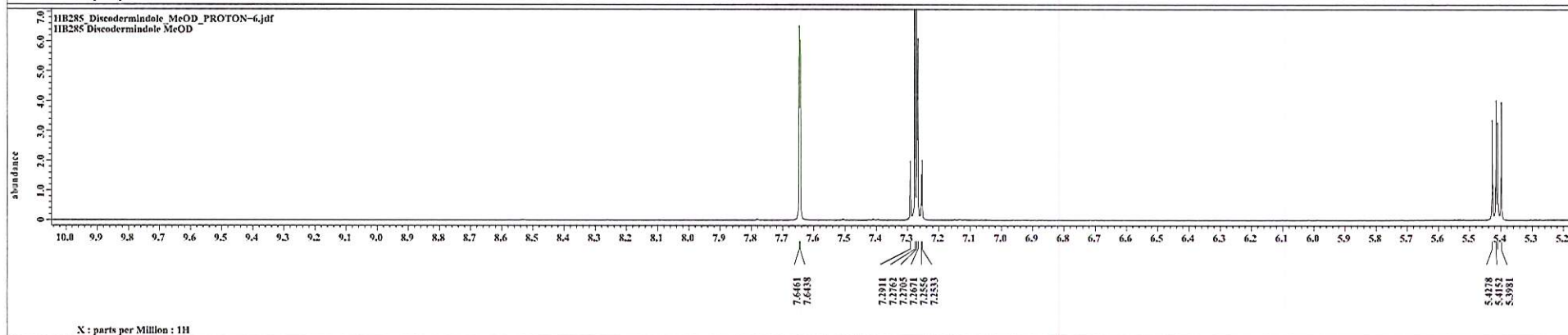
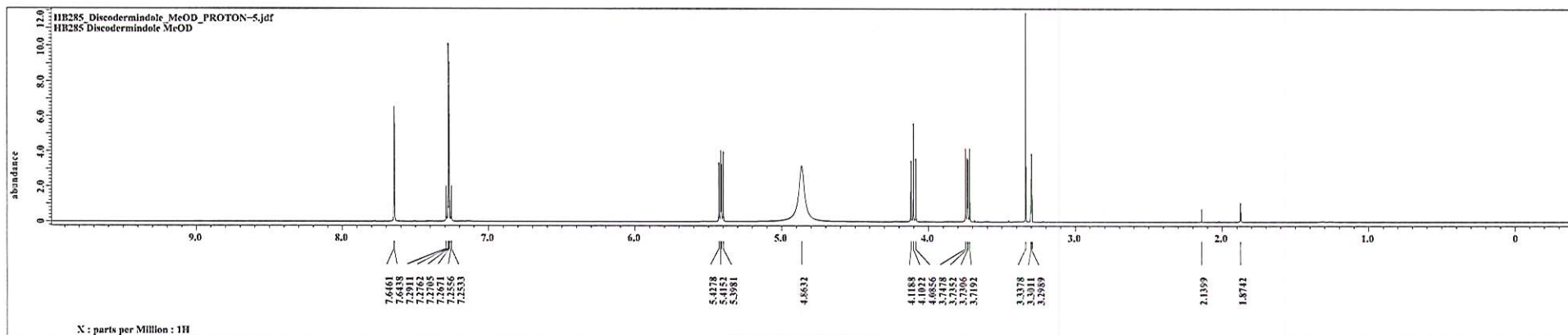


NL: 2.64E3
Base Peak m/z= 800.00-900.00 F: ITMS + c ESI Full ms [200.00-2000.00] MS
BG_HB_285_Discodermindole

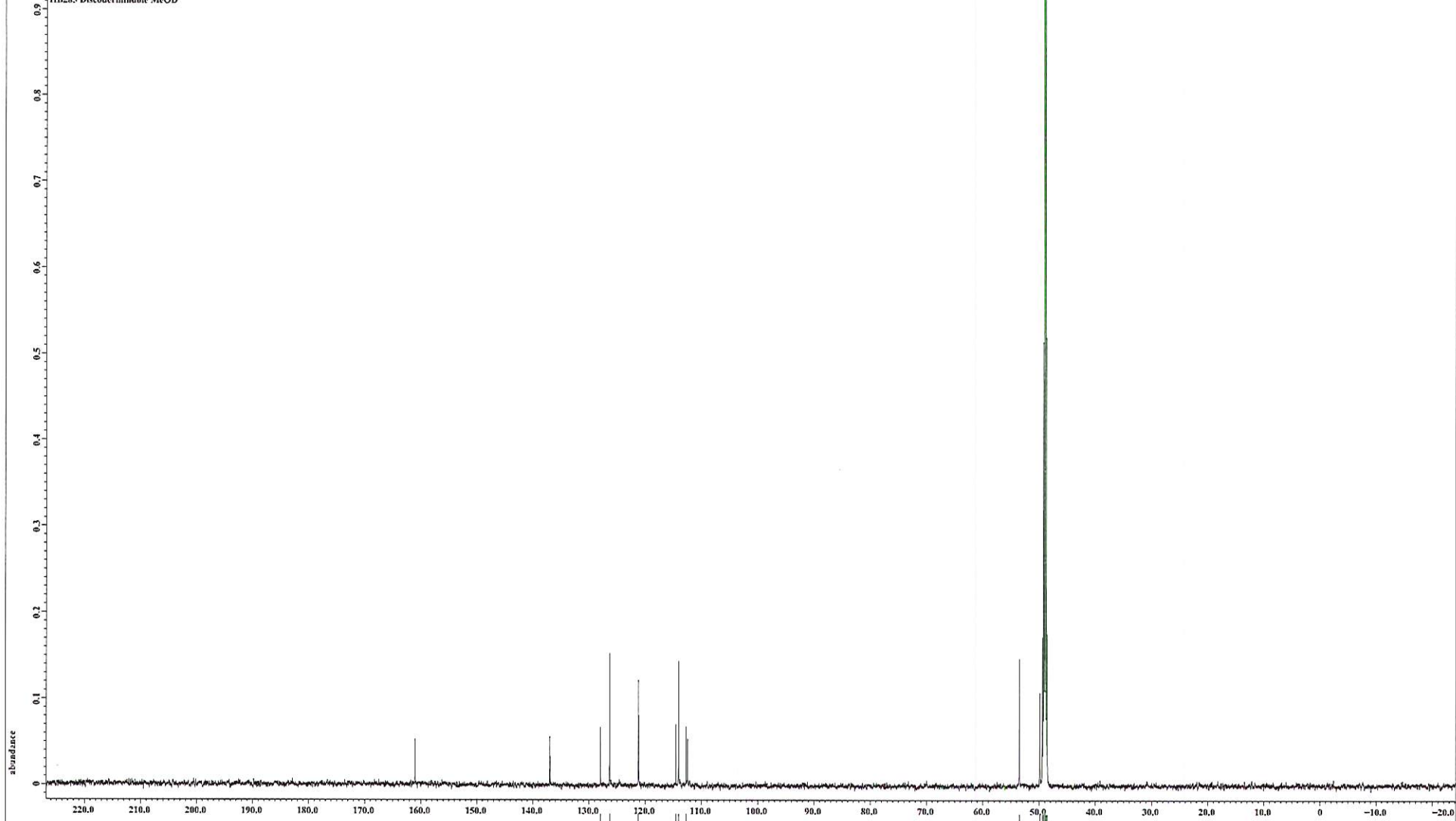


NL: 4.98E3
Base Peak m/z= 900.00-2000.00 F: ITMS + c ESI Full ms [200.00-2000.00] MS
BG_HB_285_Discodermindole

Time (min)



HR285_Discodermindole_MeOD_CARBON-4.jdf
HR285_Discodermindole_MeOD



X: parts per Million : 13C