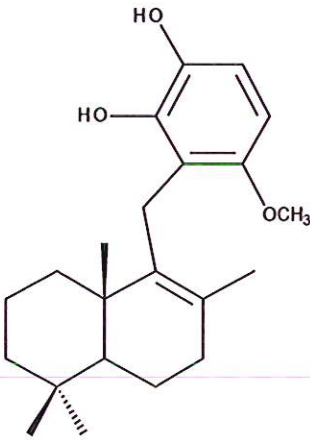


HBOI-215		
WIEDENDIOL A		
$C_{22}H_{32}O_3$		344.49
Petrosiidae		
Coval et al, 1995, <i>Biorg. Med. Chem. Lett.</i> , 5(6): 605-610		

isolation scheme (Visio) attached

hplc method (trace attached)

Method: Vydac C18 Protein and Peptide, 4.6 x 250mm, 10 μ
 flow 1 ml/min, detection: PDA: UV (extracted at 220 nm, black); ELSD (green dotted)
 A: H₂O:CH₃CN (95:5, v/v), B: CH₃CN
 t=0 min A: B (90:10, v/v), t=20 min (100%B), t=28 min (100%B)

LC-MS method

Method: Vydac C18 Protein and Peptide, 2.1x150 mm, flow 0.2 ml/min
 A: H₂O (0.1% formic acid), B: ACN (0.1% formic acid)
 t= 0 min A: B (90:10, v/v), t=15 min (100%B), t=21 min (100%B), t=22.1 min A:B (90:10, v/v)
 using a linear gradient

¹H (600 MHz) CDCl₃ CD₃OD (Methanol-d₄) CDCl₃/CD₃OD

¹³C (150 MHz) CDCl₃ CD₃OD (Methanol-d₄) CDCl₃/CD₃OD

solubility CHCl₃/MeOH (9:1) MeOH DMSO

estimated purity >90%

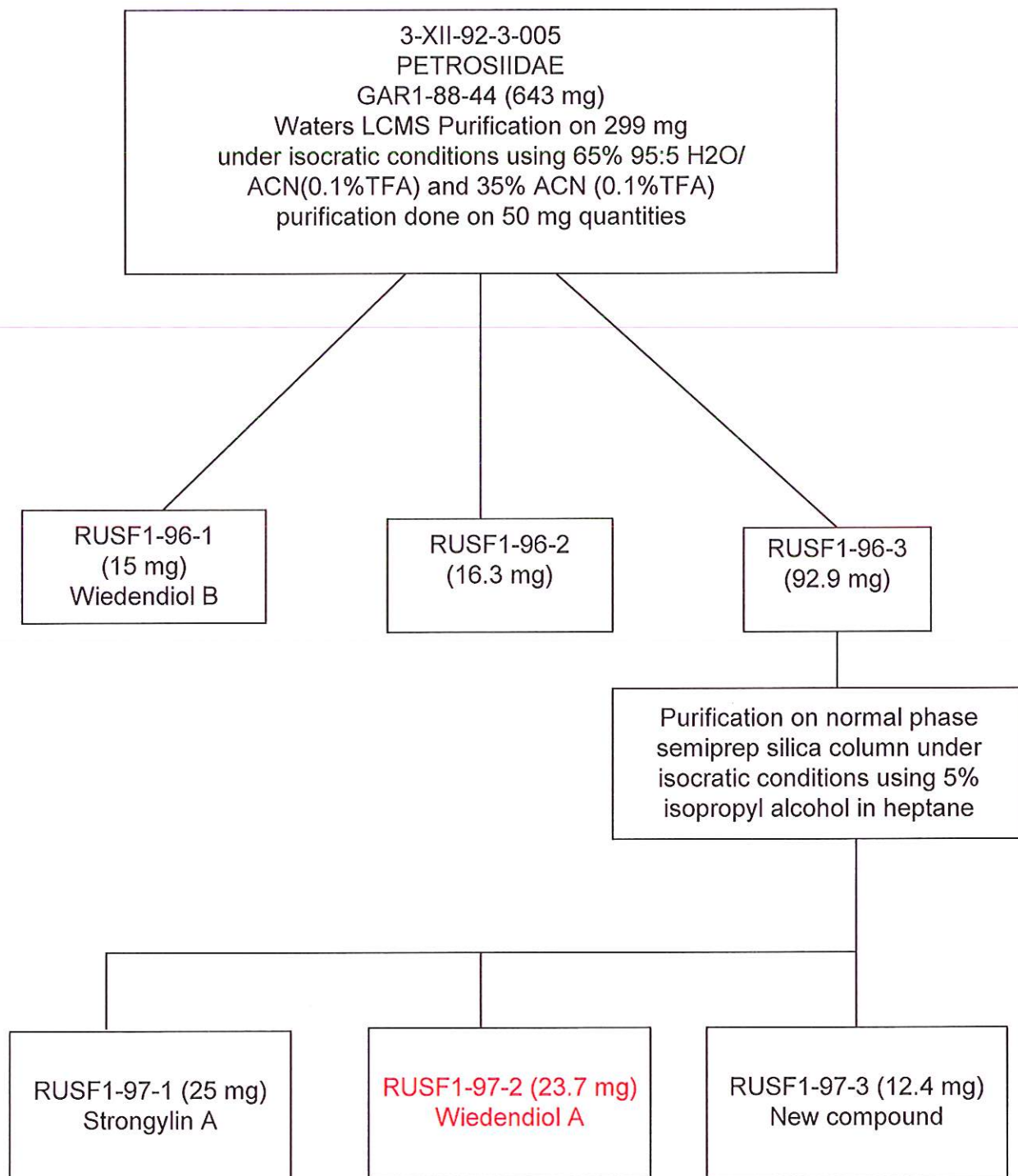
sample weight __21.2__ mg

For further information contact:

Amy E. Wright, PhD, HBOI@FAU, 5600 US 1, North, Fort Pierce, FL 34946

awrigh33@hboi.fau.edu, 772-242-2459

Date: 1/28/13



Semi prep silica column used was a Whatman partisol 10 (m9/25) column 9.5×250 mm.

Flow rate 3 mL/min.

Isocratic conditions 5% Isopropyl alcohol in heptane for 20 min.

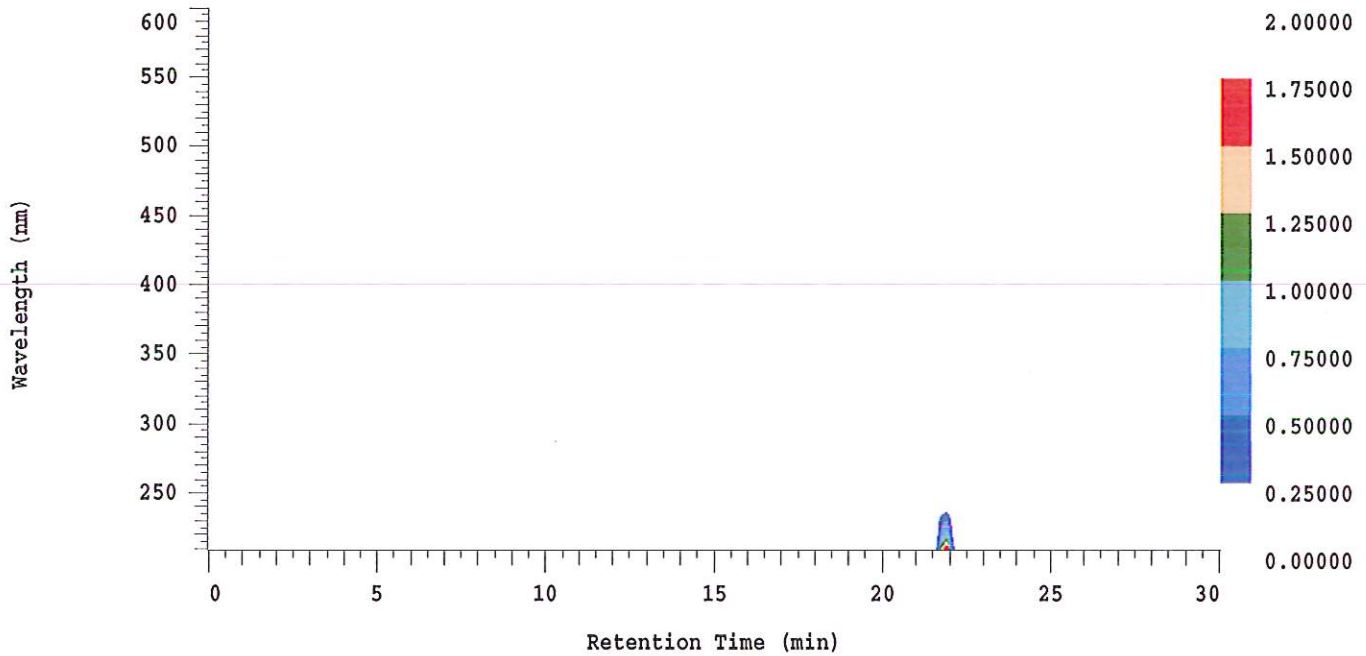
D-2000 Elite HPLC System Manager Report

Analyzed: 01/23/2013 08:48 PM

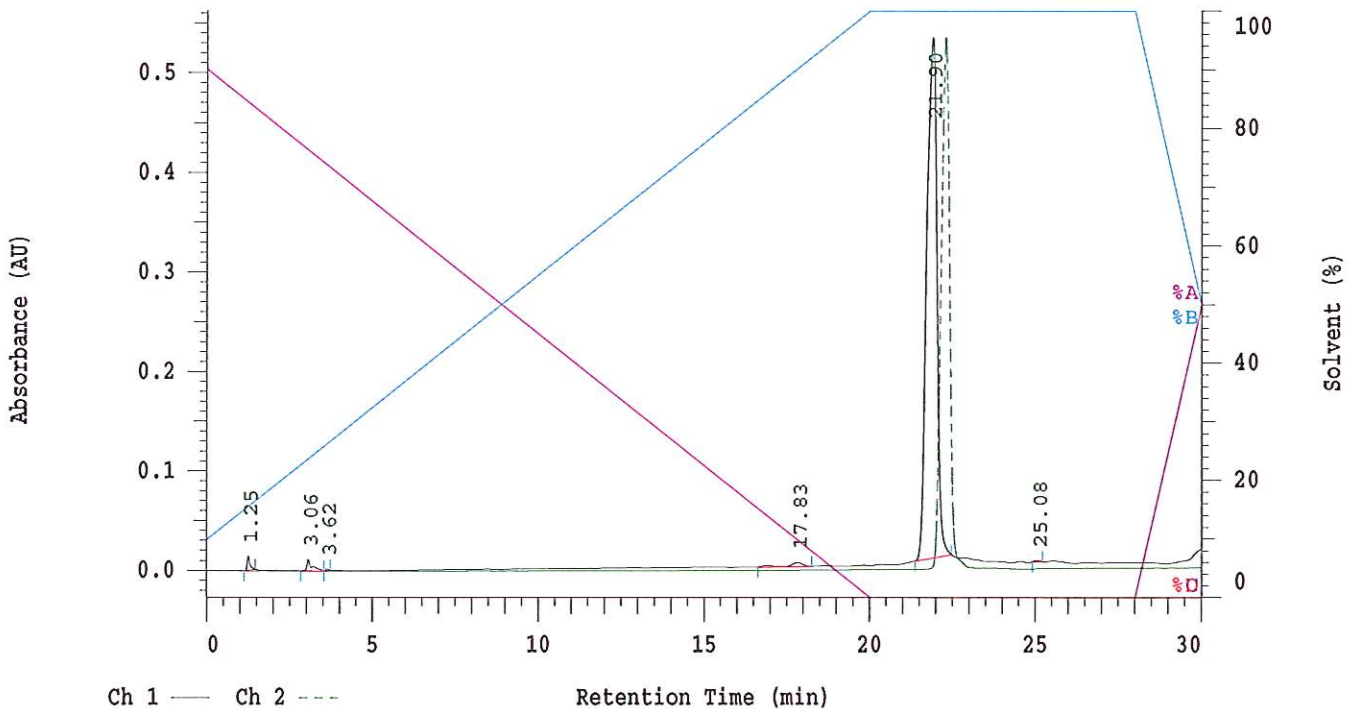
Reported: 01/24/2013 10:41 AM

Sample Name: HBOI-215

Sample Description: HBOI-215



Channel 1 Chrom Type: Fixed WL Chromatogram, 230 nm



Acquisition Method: autosamp_30mn_UV220_wELSD

Column Type: Vydac C18

Pump A Solvent A: H2O/5% ACN

Pump A Solvent B: ACN

Method Description:

RT: 0.00 - 25.00

