

**ACADEMIC AND STUDENT AFFAIRS COMMITTEE**  
October 21, 2009

**SUBJECT: Enrollment Presentation**

---

**Proposed Committee Action**

Information item.

**Background Information**

An update on student admissions and enrollments is being presented to the Committee as an item included in the committee's work plan. The presentation includes information on undergraduate enrollments as well as graduate enrollments.

**Implementation Plan/Date**

None.

**Fiscal Implications**

N/A

---

Supporting Documentation:

Presented by: Dr. Michael Armstrong, Assoc. Provost  
Dr. Barry Rosson, Dean of the Graduate College

Summary of Enrollments

Phone: 561.297.3062  
561.297.1211

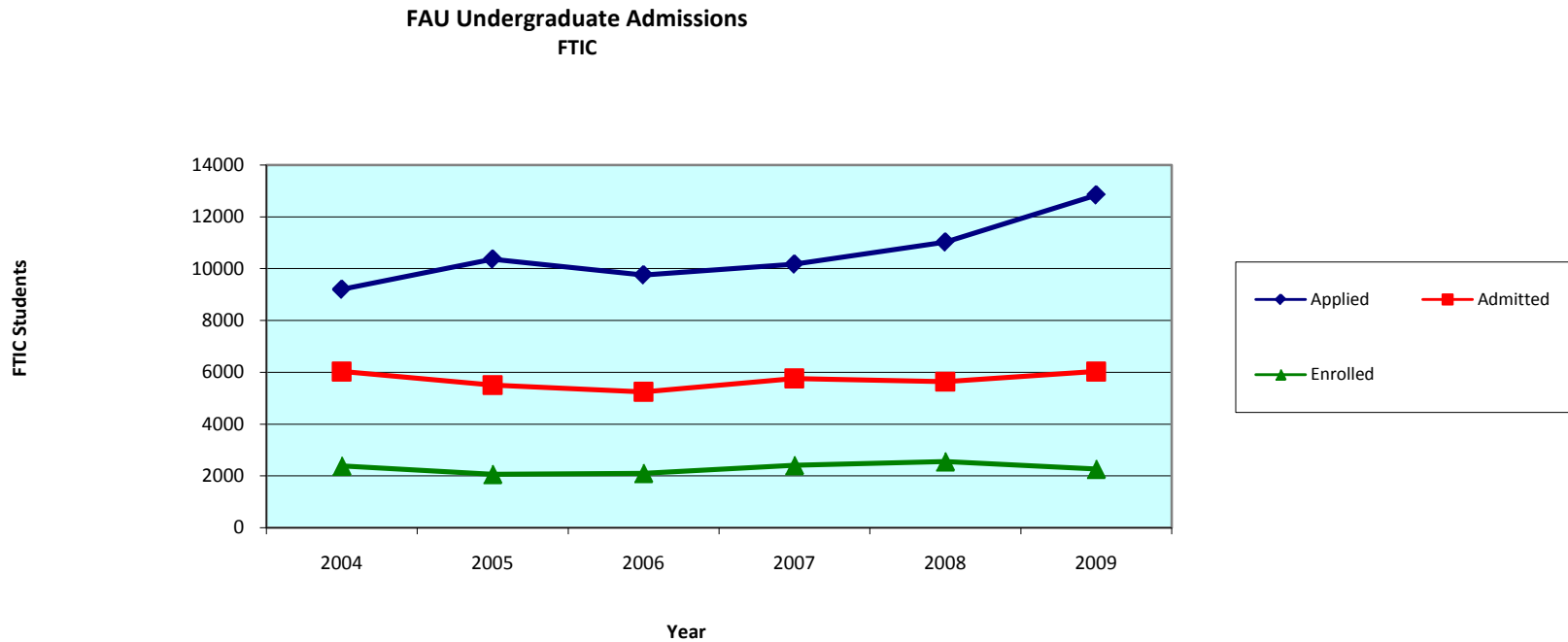


**FAU ENROLLMENT PRESENTATION**  
**Undergraduate & Graduate Enrollments**



# UNDERGRADUATE ENROLLMENT

# FAU Undergraduate Admissions – FTIC



## FAU Undergraduate Admissions

### FTIC

	<u>2004</u>	<u>2005</u>	<u>2006</u>	<u>2007</u>	<u>2008</u>	<u>2009</u>
<b>Applied</b>	9198	10363	9754	10169	11021	12838
<b>Admitted</b>	6023	5505	5245	5759	5636	6028
<b>Enrolled</b>	2380	2061	2101	2403	2550	2260
<b>Rate</b>	39.52%	37.44%	40.06%	41.73%	45.24%	37.49%

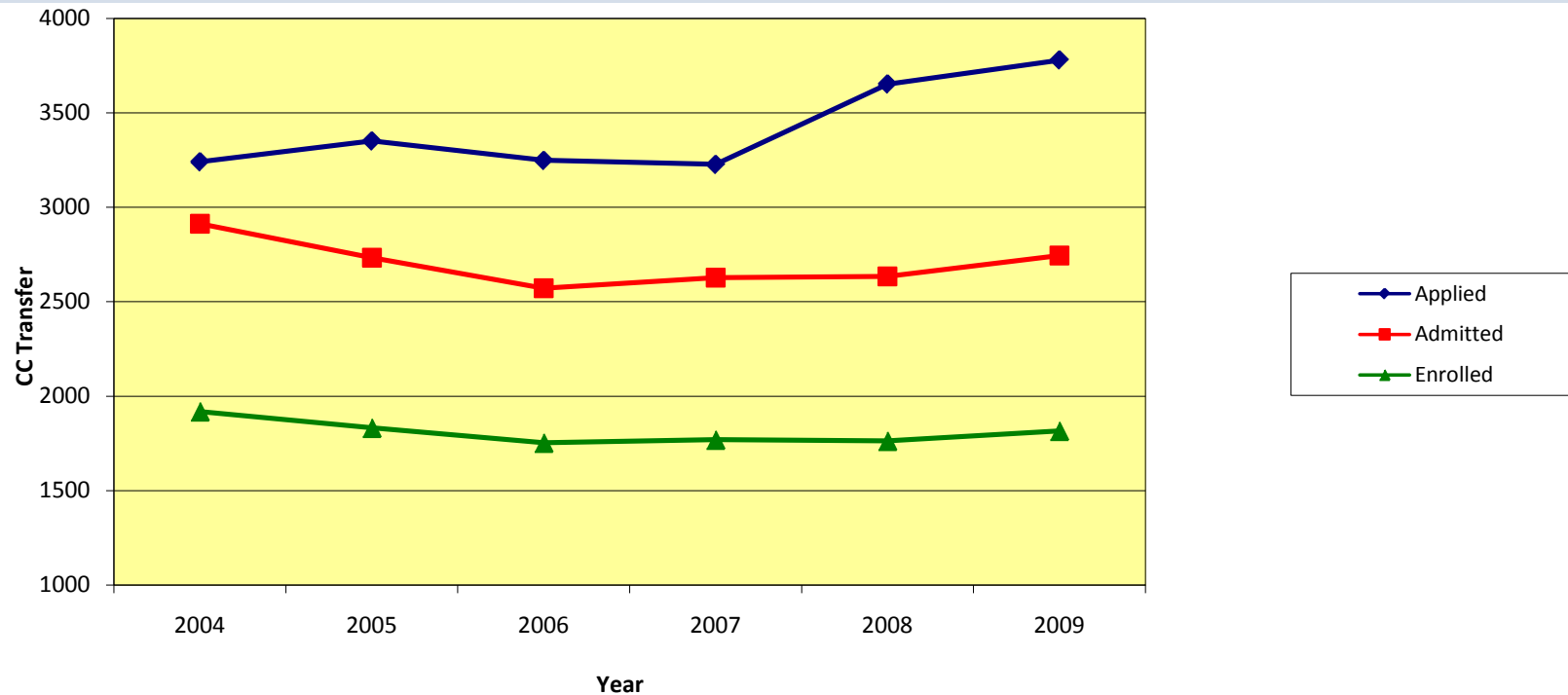
# FTIC Profile and Retention

	<u>Fall 2009</u>	<u>Fall 2008</u>	<u>Change</u>
HS GPA	3.4	3.2	.2
Mean SAT	1069	1035	34
Mean ACT	23	21	2

## First Year Retention (FTIC)

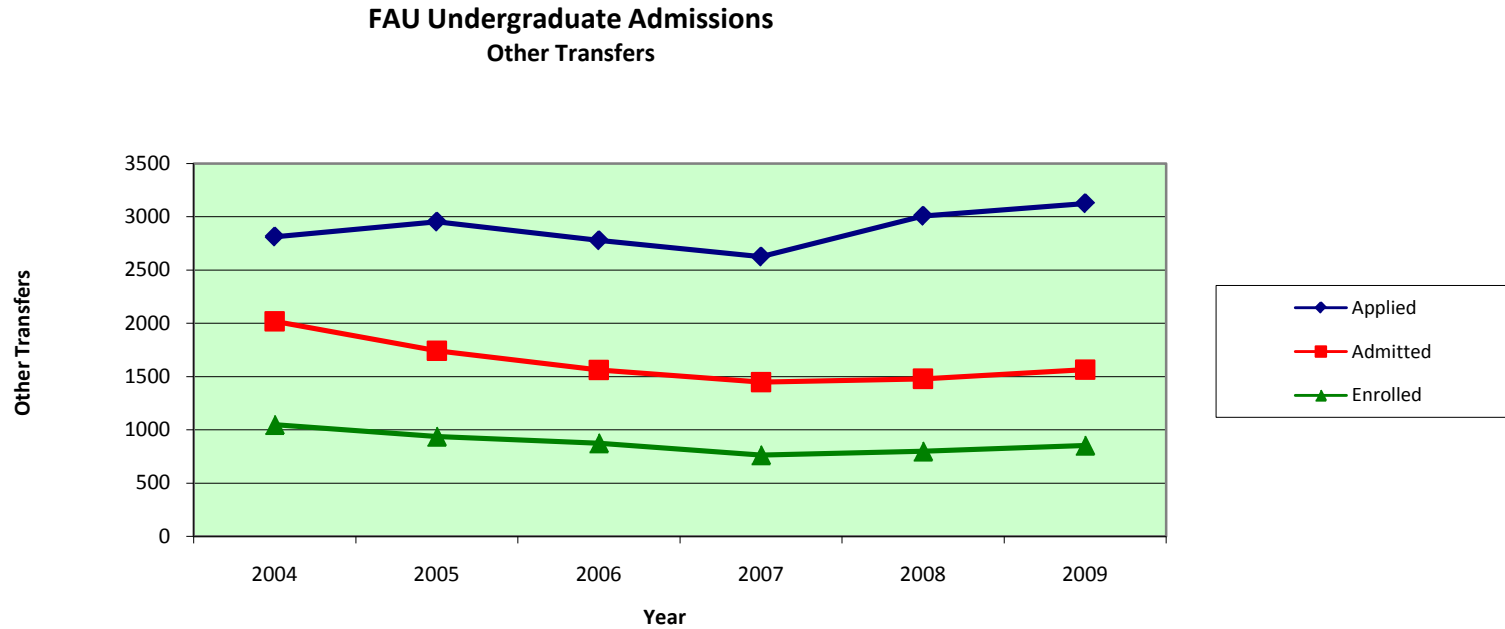
	<u>1998</u>	<u>2008</u>	<u>Change</u>
Entered	1,632	2,828	1,196 (73%)
Retained	1,177	2,205	1,028 (87%)
Rate	72%	78%	6%

# FAU Undergraduate Admissions – CC Transfers



FAU Undergraduate Admissions						
CC Transfer	2004	2005	2006	2007	2008	2009
<b>Applied</b>	<b>3241</b>	<b>3351</b>	<b>3248</b>	<b>3227</b>	<b>3652</b>	<b>3779</b>
<b>Admitted</b>	<b>2913</b>	<b>2734</b>	<b>2572</b>	<b>2628</b>	<b>2634</b>	<b>2745</b>
<b>Enrolled</b>	<b>1919</b>	<b>1832</b>	<b>1753</b>	<b>1769</b>	<b>1763</b>	<b>1816</b>
<b>Rate</b>	<b>65.88%</b>	<b>67.01%</b>	<b>68.16%</b>	<b>67.31%</b>	<b>66.93%</b>	<b>66.16%</b>

# FAU Undergraduate Admissions – Other Transfers



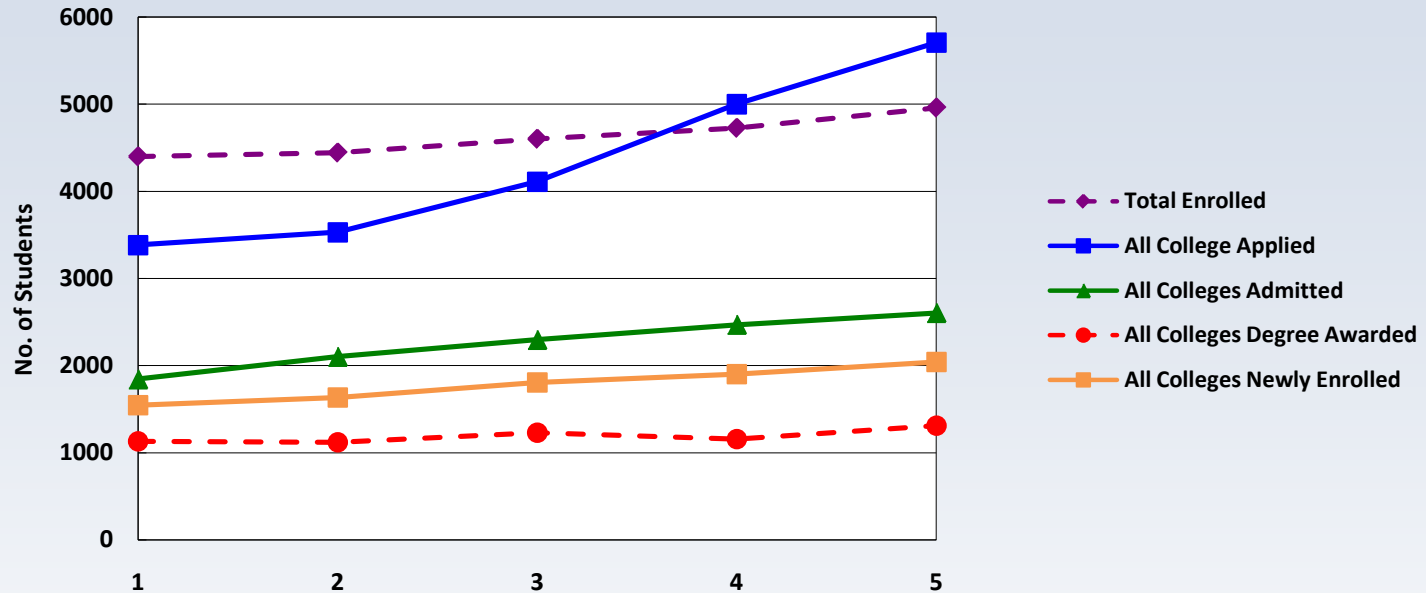
FAU Undergraduate Admissions						
Other Transfer	2004	2005	2006	2007	2008	2009
<b>Applied</b>	<b>2812</b>	<b>2952</b>	<b>2777</b>	<b>2624</b>	<b>3007</b>	<b>3125</b>
<b>Admitted</b>	<b>2018</b>	<b>1742</b>	<b>1562</b>	<b>1447</b>	<b>1478</b>	<b>1564</b>
<b>Enrolled</b>	<b>1047</b>	<b>937</b>	<b>875</b>	<b>763</b>	<b>798</b>	<b>853</b>
<b>Rate</b>	<b>51.88%</b>	<b>53.79%</b>	<b>56.02%</b>	<b>52.73%</b>	<b>53.99%</b>	<b>54.54%</b>



# GRADUATE ENROLLMENT



# 5-Year Trend - All Graduate Degrees



All Graduate Degrees		Academic Year					5 yr average
		2004-2005 (1)	2005-2006 (2)	2006-2007 (3)	2007-2008 (4)	2008-2009 (5)	
All Colleges	Applied	3384	3530	4111	5001	5707	4347
	Admitted	1845	2103	2297	2490	2605	2268
	Newly Enrolled	1545	1632	1805	1901	2040	1785
	Total Enrolled	4400	4444	4602	4727	4959	4626
	Degrees Awarded	1067 M & S 63 D	1052 M & S 68 D	1147 M & S 83 D	1080 M & S 78 D	1216 M & S 95 D	1220 M & S 77 D

# Comparison of Graduate Degrees Awarded Annually (AY 08-09)

Peer Institutions	Masters and Specialist		Doctoral	
	Total	Percent	Total	Percent
George Mason University	2,549	93%	189	7%
Georgia State University	1,730	90%	200	10%
Virginia Commonwealth University	1,556	87%	227	13%
Portland State University	1,506	97%	45	3%
University of Louisville	1,369	90%	151	10%
University of Nevada - Las Vegas	1,236	90%	134	10%
University of Wisconsin - Milwaukee	1,216	91%	114	9%
Florida Atlantic University	1,146	93%	90	7%
University of Akron	967	90%	110	10%
University of Memphis	916	87%	132	13%
University of Toledo	875	85%	149	15%

# Top 10 Graduate Programs of Interest

Program Name	2008 - 2009		2003 - 2004	
	Number of Applicants	Acceptance Rate	Number of Applicants	Acceptance Rate
<b>Business Administration MBA</b>	441	43%	286	42%
<b>Accounting MAC</b>	349	50%	141	40%
<b>Executive Forensic Accounting MAC</b>	256	55%	141	41%
<b>Family Nurse Practitioner MS</b>	223	27%	142	72%
<b>Executive Business Administration MBA</b>	192	67%	32	56%
<b>Social Work MSW</b>	184	59%	106	57%
<b>Educational Leadership: K-12 MED</b>	159	60%	5	60%
<b>Reading Education MED</b>	120	63%	58	72%
<b>Speech Language Pathology MS</b>	117	47%	82	30%
<b>Biomedical Science MS</b>	99	34%	6	67%

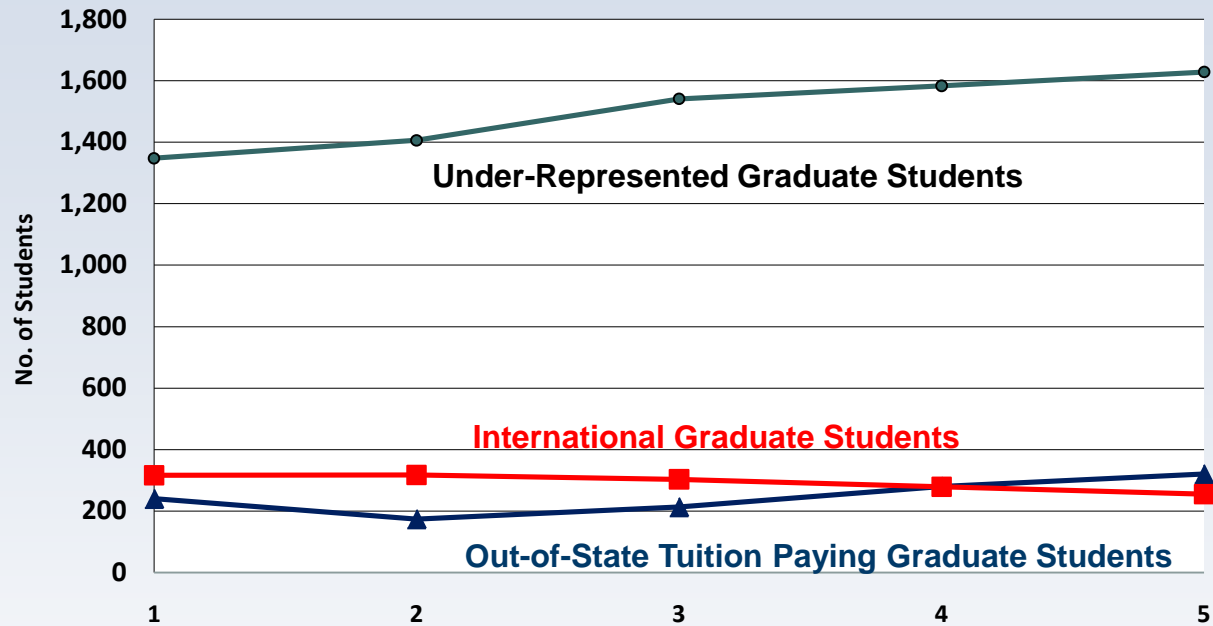
# 5-Year Change in Graduate Program Selectivity

Graduate program selectivity has steadily increased over the past five years.

	Acceptance Rate	
	<u>2008 – 2009</u>	<u>2004 – 2005</u>
Applicants to ALL Graduate Degree Programs	45 %	55 %
Applicants to Doctoral Degree Programs	37 %	44 %
Applicants to Masters Degree Programs	47%	56 %

In 2008-2009, fifteen graduate programs had an acceptance rate of 20% or less.  
In 2004-2005, only three graduate programs had this acceptance rate.

# Graduate Enrollments in Selected Areas



All Graduate Degrees		Academic Year				
		2004-2005 (1)	2005-2006 (2)	2006-2007 (3)	2007-2008 (4)	2008-2009 (5)
All Colleges	Under-Represented Graduate Students	1,348	1,406	1,541	1,583	1,628
	International Graduate Students	316	317	303	279	255
	Out-of-State Tuition Paying Graduate Students	240	174	213	280	320

# Comparison with Peer Institutions in All Three Categories

<b>Peer Institutions</b>	<b>Under-Represented</b>	<b>International</b>	<b>Out-of-State</b>
<b>University of Memphis</b>	37%	4%	9%
<b>University of Nevada - Las Vegas</b>	36%	4%	22%
<b>Florida Atlantic University</b>	35%	4%	6%
<b>Virginia Commonwealth University</b>	21%	5%	14%
<b>University of Louisville*</b>	16%	5%	21%
<b>Portland State University</b>	16%	4%	24%
<b>Georgia State University</b>	15%	12%	12%
<b>University of Akron*</b>	15%	4%	5%
<b>University of Toledo</b>	15%	15%	14%
<b>George Mason University*</b>	13%	6%	17%
<b>University of Wisconsin - Milwaukee</b>	12%	4%	NA

\* Includes Undergraduate and Graduate

# Graduate Student Recruitment

## ON-GOING RECRUITMENT ACTIVITIES

### UNIVERSITY-WIDE GRADUATE PROGRAMS OPEN HOUSE

- ◆ Friday, October 30, 2009.
- ◆ Multiple college and program participation.

### INFORMATION SESSIONS

- ◆ In-office meetings with prospective students.
- ◆ Monthly sessions for prospective students.  
(Hosted with Financial Aid and Testing & Evaluation Offices)



### TARGETED RECRUITMENT TRAVEL

- ◆ Multiple college and educational fairs.



# Graduate Student Recruitment

## ON-GOING RECRUITMENT ACTIVITIES

### UNIVERSITY-WIDE GRADUATE RECRUITMENT WORKSHOP

- ◆ Friday, September 25, 2009
- ◆ Recruitment Fellowships and Grants

### EMAIL CAMPAIGNS

- ◆ Intelliworks

### GRADUATE PROGRAM ASSISTANCE

- ◆ Recruitment assistance to individual programs

