




FLORIDA ATLANTIC UNIVERSITY



*Forge Your Path*



Florida Atlantic University is an **energetic** and **fast-growing** institution, **determined** to propel itself to the forefront of **innovation** and scholarship. Here you have the **power** to forge a **path** that allows you to define not only what you want to be, but who you want to be.





# UNDERGRADUATE ACADEMIC PROGRAMS

## Dorothy F. Schmidt College of Arts & Letters

Anthropology \*  
 Architecture  
 Art (Art History, Graphic Design, Studio Art)\*  
 Commercial Music (Business, Composition, Technology) \*  
 Communication Studies \*  
 English \*  
 History \*  
 Interdisciplinary Studies (Women, Gender, and Sexuality Studies, Arts and Humanities, Social Sciences) \*  
 Jewish Studies  
 Language, Linguistics and Comparative Literature (French, Italian, Spanish, and Linguistics and Comparative Literature)\*  
 Multimedia Studies (Film, Video, and New Media; and Multimedia Journalism)  
 Music (Performance) \*  
 Music Education  
 Philosophy  
 Political Science \*  
 Public Management \*  
 Public Safety Administration \*  
 Sociology \*  
 Theatre (Design and Technology, Music Theatre, Performance) \*

## College of Business

Accounting \* #  
 Business Administration \* #  
 Data Science & Analytics \*  
 Economics \* #

## See the Kinds of Classes You Will Take

Want to know which classes you'll be taking for your major? Visit our curriculum sheets and flight plans to see what each major offers: [fau.edu/uas/curriculum.php](http://fau.edu/uas/curriculum.php)

Finance \* #  
 Health Administration \*  
 Hospitality and Tourism \* #  
 Information Systems \*  
 International Business and Trade  
 International Business Management \* #  
 Marketing \* #

## College of Social Work and Criminal Justice

Criminal Justice \* #  
 Social Work\*

## College of Education

Early Child Care and Education  
 Elementary Education  
 Exceptional Student Education \*  
 Secondary Education (Chemistry, Biology, English, Physical education, Mathematics, Science, Social Studies) \*

## College of Engineering & Computer Science

Biomedical Engineering  
 Civil Engineering \*  
 Computer Engineering \*  
 Computer Science \* #  
 Data Science and Analytics \*  
 Electrical Engineering \*  
 Environmental Engineering  
 Geomatics Engineering  
 Mechanical Engineering \*  
 Ocean Engineering \*

## Harriet L. Wilkes Honors College

Liberal Arts and Sciences Honors ^  
 Biological and Physical Sciences Honors ^

## Christine E. Lynn College of Nursing

Nursing\*

## Charles E. Schmidt College of Science

Biological Sciences (Cell Biology, Environmental Science, Marine Science, Neuroscience, Organismal Biology)\*  
 Chemistry and Biochemistry \*  
 Data Science and Analytics \*  
 Exercise Science and Health Promotion \*  
 Geography  
 Geology  
 Geosciences \*#  
 Health Science  
 Mathematical Sciences \*  
 Medical Biology  
 Neuroscience and Behavior \*  
 Physics \*  
 Psychology \*  
 Urban Design  
 Urban and Regional Planning \*

\*Indicates Graduate Degree availability

# Indicates Online Degree availability

^ Full list of concentrations at [fau.edu/honors](http://fau.edu/honors)

## Requirements & Limited Access Programs

Some academic programs are considered limited access and have additional requirements. For more information, please visit: [fau.edu/admissions/freshmen/requirements.php](http://fau.edu/admissions/freshmen/requirements.php)



# Student Profile

MIDDLE 50% OF  
ADMITTED FIRST YEAR  
STUDENTS

GPA	SAT	ACT
<b>Summer:</b> 3.24-3.82	<b>Summer:</b> 1010-1150	<b>Summer:</b> 20-24
<b>Fall:</b> 3.68-4.29	<b>Fall:</b> 1080-1240	<b>Fall:</b> 22-27

More than **50%** of our students are from diverse backgrounds, making **FAU #1 for ethnic diversity** among the State Universities in Florida.



## ACADEMIC PROFILE

22:1

Student/  
Faculty  
Ratio



30,000  
Total  
Enrollment



199,000  
Members  
of Owl Family



## CAREER SERVICES

Start with **Major KnOWledge**, an early exploration tool that **helps students** identify personal interests and their relationships to **career pathways**.

Complete your Career Interest Inventory and meet with the FAU **Career Center** to review your results and create your career plan.

Go to [fau.edu/career](https://fau.edu/career), select **Major KnOWledge** and create your guest account using the code **J3928873JFV**.

## CAREER SERVICES

[fau.edu/career](https://fau.edu/career)

**PURSUE** your future plans  
**OBTAIN** a professional headshot  
**GAIN** internship experience  
**BUILD** your resume

**PREPARE** for your interview  
**DECIDE** on your major  
**KICK OFF** your future  
**APPLY** to graduate school





## COST OF ATTENDANCE



**PER CREDIT:**  
 FL Resident: \$203.29 | Non-FL Resident: \$721.84

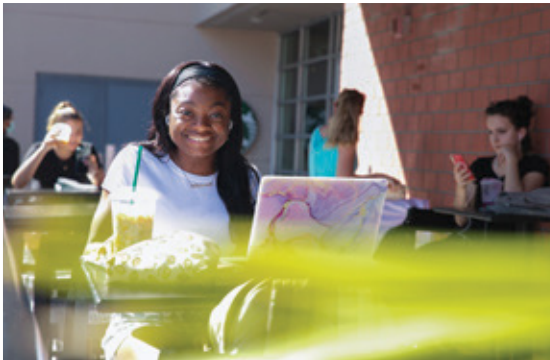
	FL Resident, On Campus	FL Resident, With Family	Non-FL Resident, On Campus	Non-FL Resident, Off Campus
<b>Tuition &amp; Fees</b>	\$5,816 *	\$5,816 *	\$20,192 *	\$20,192 *
<b>Books &amp; Supplies</b>	\$1,256	\$1,256	\$1,256	\$1,256
<b>Housing &amp; Food</b>	\$13,518 *	\$7,182	\$13,518 *	\$19,216
<b>Transportation</b>	\$2,742	\$4,012	\$2,742	\$4,012
<b>Misc Personal Expenses</b>	\$4,302	\$4,302	\$4,302	\$4,302
<b>Direct Costs (Payable to FAU)</b>	<b>\$19,334 *</b>	<b>\$5,816 *</b>	<b>\$33,710 *</b>	<b>\$20,192 *</b>
<b>Indirect Costs</b>	\$8,300	\$16,752	\$8,300	\$28,786
<b>TOTAL</b>	<b>\$27,634</b>	<b>\$22,568</b>	<b>\$42,010</b>	<b>\$48,978</b>

\* Total costs may vary depending on individual needs and course material requirements. Estimates based on 27 credit hours. For more information about the cost of attendance, including the Net Price Calculator tool, visit [fau.edu/financial/other/cost-of-attendance](http://fau.edu/financial/other/cost-of-attendance)

## FINANCIAL AID

File your Free Application for Federal Student Aid (FAFSA®) beginning October 1<sup>st</sup> of your high school senior year at [studentaid.ed.gov](http://studentaid.ed.gov). (FAU school code: **001481**)

Learn more about need-based scholarships, external scholarships, federal loans, grants, and federal Work Study options through our Office of Financial Aid at [fau.edu/financial](http://fau.edu/financial)



SCHOLARSHIPS

# Scholarships

## MERIT-BASED SCHOLARSHIPS

ALL potential Owls are considered for FAU's merit-based scholarships when you complete your application by the merit scholarship deadline. **No additional application is necessary**, though merit-based scholarships are limited and competitive. Applications for admissions must be completed by January 15 to be considered for Merit-Based Scholarships

For more information about scholarships, including those which may require an additional application, visit [fau.edu/admissions/freshman/scholarships/](https://fau.edu/admissions/freshman/scholarships/)

## RAISE.ME

Earn micro-scholarships for activities you already do! To create your portfolio and start earning scholarship money today, visit our profile at [Raise.Me/join/fau](https://Raise.Me/join/fau)



## HONORS PROGRAMS



# Honors

## Harriet L. Wilkes Honors College

- Nation's only comprehensive research university affiliated free-standing honors college
- Highest rating nationwide from Inside Honors
- Close knit, residential community located in Jupiter, FL
- FAU Stiles-Nicholson Brain Institute, Max Planck Florida Institute for Science and Scripps Research Institute Florida on site

Visit [fau.edu/honors](http://fau.edu/honors)

## University Honors Program

- First two years of study on the Boca Raton campus
- Small class sizes
- Part of university's comprehensive research programming
- Connections with top-ranked faculty

Visit [fau.edu/honorsboca](http://fau.edu/honorsboca)

## Bachelor's/M.D. Dual Degree Programs

- Achieve B.S. and M.D. degrees in 7-8 years
- Two paths—Med Direct on Boca Raton campus or Wilkes Medical Scholars on Jupiter Campus





## Research

Florida Atlantic students are contributing to a culture of discovery, innovation, and entrepreneurship through their research. In the process, they are able to:

**INCREASE** the likelihood of graduating on time

**DEVELOP** core professional skills

**STAND OUT** when taking next professional step

**ENHANCE** their learning and networking opportunities

**FOSTER** professional relationships with faculty



Students' **curiosity and passion for research** is refreshing. As undergraduates, they are already contributing original work to the scientific community."

—Donna Chamely-Wiik, Ph.D.  
*Associate dean for Undergraduate Research and  
Prestigious Fellowships and associate scientist in the  
Department of Chemistry and Biochemistry*

Explore FAU's undergraduate research opportunities at [fau.edu/our](https://fau.edu/our)



## LIFESTYLE



### CAMPUS LIFE

Florida Atlantic's vibrant culture will help you soar. We offer student-centered programming, clubs and organizations to build up social and networking skills, and the opportunity to make lifelong friendships. Explore the Florida Atlantic lifestyle at [fau.edu/lifestyle](http://fau.edu/lifestyle)



Student Organizations  
400+

ΦΑΥ Fraternity & Sorority life



Outdoor Adventures



Intramural Sports



Student Government



Group Fitness Classes



Red & Blue Week Carnival



Bonfire Music Festival



eSports Arena



ATHLETICS



## DIVISION 1 ATHLETICS

### Men

Baseball  
Basketball  
Cross Country  
Football  
Golf  
Soccer  
Spirit  
Swimming & Diving  
Tennis

### Women

Basketball  
Beach Volleyball  
Cross Country  
Golf  
Soccer  
Softball  
Spirit  
Swimming & Diving  
Tennis  
Track & Field  
Volleyball

*Go Owls!*

Cheer on Florida Atlantic Athletics and get a taste of **Winning in Paradise!** We are proud member of the American Athletic Conference, Conference USA (Beach VB), and the Coastal Collegiate Sports Association (Men's Swimming & Diving).

Stay up to date on our teams at [fausports.com](https://fausports.com)





## HOUSING & RESIDENTIAL EDUCATION

# Living on Campus

By living on campus, you get to be close to all of the action – classes, organizations, on-campus events, campus dining, and the Breezeway!

Choose from 4 first-year residence halls—**Atlantic Park Towers, Glades Park Towers, Heritage Park Towers, or Indian River Towers.**

All first-year Owls are prioritized for summer/fall on-campus housing for



those who **submit a housing contract by the April 1 priority deadline.** There is limited space, though, for housing in the spring semester. There is no requirement for students to live on the Boca Raton campus but for Wilkes Honors students, on-campus residency is required for two years.

For more information about floor plans, pricing and important dates, please visit: [fau.edu/housing](https://fau.edu/housing)

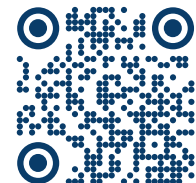
### Dining Options

A wide variety of dining options that cater to any dietary requirements are available. To view all options, including meal plans with the Atlantic Dining Hall, visit [fau.edu/business-services/dining-locations](https://fau.edu/business-services/dining-locations)

### Housing Highlights

- Utilities, cable via streaming, WIFI, and laundry are all included.
- Fully-furnished rooms
- Residential student parking
- Free tutoring at Get Wise! Centers
- 24/7 security—main desk operations and on-campus police dept
- Swipe-access entry

Take a virtual tour of our residence halls at [fau.edu/housing/tour](https://fau.edu/housing/tour)





## APPLICATION DEADLINES

### First Year Admissions Deadlines

Applications and all supporting materials, including test scores, must be received by the dates below for consideration. [fau.edu/admissions/deadlines](https://fau.edu/admissions/deadlines)

	Priority First-Year Application	Final Admission Application	Priority Housing Application	Merit Scholarship Consideration Application
Summer	November 1	April 1	April 1	January 15
Fall	November 1	April 1	April 1	January 15
Spring		September 15		

### 1. APPLY

Submit your combined application for undergraduate admissions and merit-based scholarships, along with the \$30 non-refundable application fee, at [apply.fau.edu](https://apply.fau.edu) or [commonapp.org](https://commonapp.org).

### 2. CREATE YOUR SSAR

Create your Self-reported Student Academic Record (SSAR) at [appstatus.fau.edu](https://appstatus.fau.edu).

### 3. REPORT YOUR SCORE

FAU **requires** an SAT/ACT/CLT score to make an admissions decision. Students can self-report their SAT/ACT/CLT scores in the SSAR or send an official score report. Official scores are required from the testing agency before enrollment.



WELCOME  
HOME



**MAP KEY**

- 2 hrs and 50 mins to Orlando
- 3 hrs and 40 mins to Tampa
- 35 minutes to Fort Lauderdale
- 45 minutes to Miami

*Welcome to  
Florida Atlantic University*

IT'S NOT A DESTINATION,  
IT'S A STATE OF MIND

**City Stats**

Boca Raton's Population: 214,419  
Average Temperature: 77°F

**Nearest Airports**

Palm Beach International Airport (PBI)  
Fort Lauderdale-Hollywood International Airport (FLL)





*Forge Your Path*

## Top 6 States for Student Enrollment

- |               |                  |
|---------------|------------------|
| 1. Florida    | 4. Pennsylvania  |
| 2. New York   | 5. Massachusetts |
| 3. New Jersey | 6. Maryland      |

## Top 20



for **African American**  
Students Earning  
Bachelor Degrees



**4800+**  
Registered  
**Internships**

## Top 6 Countries for Student Enrollment

- |                   |                      |
|-------------------|----------------------|
| 1. United States  | 4. Jamaica           |
| 2. Colombia       | 5. Brazil            |
| 3. United Kingdom | 6. Trinidad & Tobago |



**Hispanic**  
Serving  
Institution

**#1**

Most **Diverse**  
Public University  
in Florida





## Questions?

We Give A Hoot,  
Contact Us!

[fau.edu/admissions](https://fau.edu/admissions)  
[admissions@fau.edu](mailto:admissions@fau.edu)  
561-297-3040

## Visit FAU

Schedule your visit to campus  
at [fau.edu/admissions/visit](https://fau.edu/admissions/visit)



[www.fau.edu](https://www.fau.edu)  
[@FAUadmissions](https://www.instagram.com/FAUadmissions)